



INDEX OF TEXAS ARCHAEOLOGY

Open Access Gray Literature from the Lone Star State

Volume 2020

Article 78

2020

Ancestral Woodland and Caddo Cemetery/Burial and Mound Sites in East Texas and on the Sabine River in Northwest Louisiana

Timothy K. Perttula

Follow this and additional works at: <https://scholarworks.sfasu.edu/ita>



Part of the [American Material Culture Commons](#), [Archaeological Anthropology Commons](#), [Environmental Studies Commons](#), [Other American Studies Commons](#), [Other Arts and Humanities Commons](#), [Other History of Art, Architecture, and Archaeology Commons](#), and the [United States History Commons](#)

Tell us how this article helped you.

This Article is brought to you for free and open access by the Center for Regional Heritage Research at SFA ScholarWorks. It has been accepted for inclusion in Index of Texas Archaeology: Open Access Gray Literature from the Lone Star State by an authorized editor of SFA ScholarWorks. For more information, please contact cdsscholarworks@sfasu.edu.

Ancestral Woodland and Caddo Cemetery/Burial and Mound Sites in East Texas and on the Sabine River in Northwest Louisiana

Creative Commons License



This work is licensed under a [Creative Commons Attribution-NonCommercial 4.0 International License](https://creativecommons.org/licenses/by-nc/4.0/)

Ancestral Woodland and Caddo Cemetery/Burial and Mound Sites in East Texas and on the Sabine River in Northwest Louisiana

Timothy K. Perttula

This is the first iteration of a comprehensive list of all known ancestral Woodland period (ca. 2500-1150 years B.P.) and Caddo (ca. 1150-300 years B.P., Early Caddo, ca. 1150-750 years B.P.; Middle Caddo, ca. 750-550 years B.P.; Late Caddo, 550-270 years B.P., and Historic Caddo, postdating 270 years B.P.) cemetery/burial sites in East Texas and along the Sabine River at Toledo Bend Reservoir in Northwest Louisiana. If a cultural component cannot be established at this time for some of the Caddo sites, they are simply identified as having a Caddo component. Several references were key in compiling this list, including Thurmond (1990), Kenmotsu and Perttula (1993), Perttula (2012), and Perttula et al. (2011), plus many articles in the *Journal of Northeast Texas Archaeology*, Special Publications of the Friends of Northeast Texas Archaeology, and other available East Texas Caddo archaeological publications. The site files, county files, notes, and records on sites held by the Texas Archeological Research Laboratory have proved invaluable over the years with regards to East Texas Caddo research endeavors by myself and others, as have information shared by knowledgeable avocational archaeologists, and I found much useful information on the Texas Historic Sites Atlas.

At the present time (July 15, 2020), there are 617 known and likely cemetery and burial sites with available information to some degree in East Texas and along the Sabine River in the Toledo Bend Reservoir area of Northwest Louisiana, and 120 identified mound sites, many also with off-mound cemeteries and burial features. The search for more ancestral Woodland and Caddo cemetery and burial sites will continue for a while, if any colleagues have sites that can be added.

Ancestral Woodland and Caddo Cemetery/Burial Sites

The 617 known ancestral Woodland and Caddo cemeteries and burial sites in East Texas and a small bit of Northwest Louisiana are in two parishes in the latter and 35 counties in East Texas (Table 1 and Figure 1). By far the highest densities of cemeteries and/or burial sites in this part of the Caddo area are in present day Titus (n=52), Upshur (n=44), Anderson (n=38), Camp (n=35), Harrison (n=36), Smith (n=35), and Wood (n=35) counties (Table 2). These places are primarily associated with settlements and mound centers in the Big Cypress, Sabine, and Neches River basins in the Pineywoods that represent key sites in the Late Caddo period Titus and Frankston phases (Figure 2a-c).

Nowhere in East Texas are Woodland period cemeteries and burial sites represented in any frequency, as only 1.7 percent of the 532 cemeteries and burial sites with a known age have Woodland period burial features. They are widely distributed in the Red, Sabine, Sulphur, and the Angelina river basins, primarily in the Pineywoods and Post Oak Savanna.

Caddo cemeteries and/or burial sites are well represented across East Texas. These include single interments, family cemeteries with ca. 10-30 burials, large community cemeteries (especially in the Big Cypress Creek basin in Late Caddo period times) with plus 80-120

Table 1. Cemetery/Burial Sites by County and Temporal Period.

State or Texas County	W*	C	EC	MC	LC	HC	N
NW Louisiana	1	-	1	-	6	-	8
Anderson	-	2	-	1	27	8	38
Angelina	-	2	-	1	-	3	6
Bowie	2	5	-	2	15	4	28
Camp	-	4	1	2	28	-	35
Cash	-	-	1	6	6	7	20
Cherokee	-	5	2	-	17	7	31
Delta	-	1	6	-	-	-	7
Fannin	-	4	-	1	-	-	5
Franklin	-	-	1	3	10	-	14
Freestone	-	1	-	-	-	-	1
Gregg	1	1	-	2	9	2	15
Harrison	-	1	1	7	21	6	36
Henderson	-	5	1	-	12	-	18
Hopkins	1	2	3	5	11	-	22
Houston	-	-	-	1	1	3	5
Hunt	-	1	-	-	-	-	1
Jasper	-	-	-	-	1	-	1
Kaufman	-	1	1	-	-	-	2
Lamar	1	7	1	5	-	1	15
Marion	-	-	1	2	9	-	12
Morris	-	-	-	-	14	1	15
Nacogdoches	-	5	-	4	7	9	25
Panola	-	3	-	2	1	-	6
Rains	-	1	-	1	-	-	2
Red River	1	7	3	4	11	-	26
Rusk	-	2	1	4	2	5	14
Sabine	-	4	-	1	5	-	10
San Augustine	1	6	-	-	4	5	16
Shelby	-	3	-	2	3	-	8
Smith	-	6	3	9	16	1	35
Titus	-	5	2	5	38	2	52
Tyler	-	-	-	-	4	-	4
Upshur	-	1	2	2	38	1	44
Van Zandt	-	2	-	3	1	-	6
Wood	1	-	1	7	26	-	35
Totals	9	87	32	82	342	65	617
Percent	1.5	14.1	5.2	13.3	55.7	10.6	

*Woodland; C=undifferentiated Caddo; EC=Early Caddo; MC=Middle Caddo; LC=Late Caddo; HC=Historic Caddo

Natural Regions of Texas

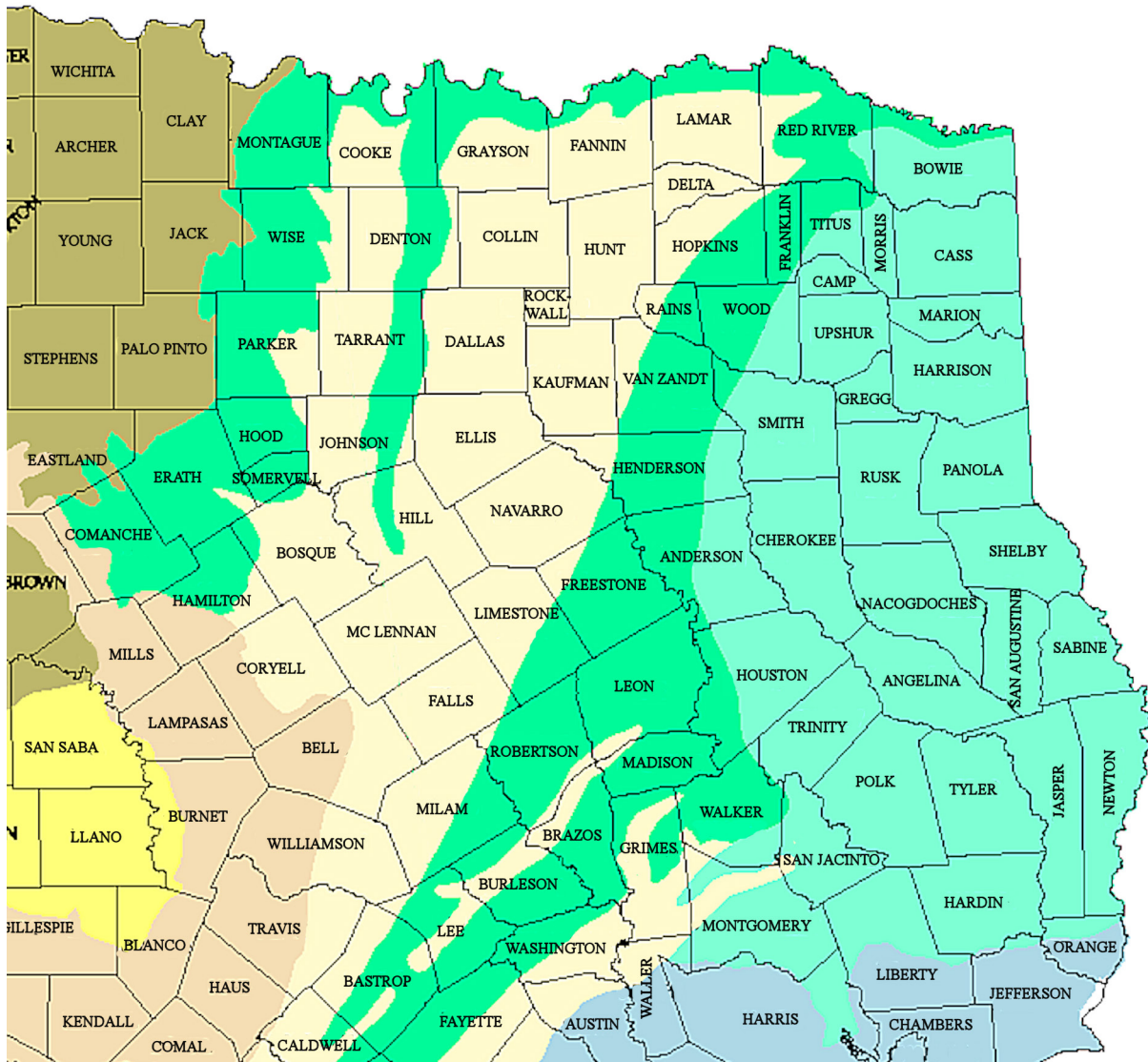


Figure 1. East Texas counties and natural regions.

Table 2. Cemeteries and Burial Sites in East Texas and Northwest Louisiana.

Trinomial/County, Site Name, and Age

- 16DS10/16DS289, James Pace, Early Caddo
- 16SA1, Goode, Late Caddo
- 16SA17, Caddo (Late Caddo?)
- 16SA30, Bison B, Late Caddo
- 16SA37a, Salt Lick, Late Caddo-Historic Caddo
- 16SA48, Coral Snake, Woodland

Table 2. Cemeteries and Burial Sites in East Texas and Northwest Louisiana, cont.

 Trinomial/County, Site Name, and Age

16SA67, Late Caddo

16SA91, Late Caddo

41____, Clay Ball, Late Caddo (upper Neches River basin)

41AG9, Historic Caddo

41AG10, Historic Caddo

41AG17, Caddo

41AG22, Historic Caddo

41AG64, Caddo

41AG66, Mosquito Island, Middle Caddo

41AN____, McSpadden, Late Caddo

41AN____, BAE, Late Caddo

41AN____, Site A-1, Historic Caddo

41AN1, Mrs. J. M. Cook, Late Caddo-Historic Caddo

41AN2, J. M. Cook, Late Caddo

41AN3, J. C. Slaughter, Late Caddo

41AN4, W. T. Robinson, Late Caddo

41AN6, Gillespie Farm, Caddo

41AN7, Mrs. G. H. Dixon, Late Caddo

41AN8, L. Cecil Farm, Historic Caddo

41AN9, B. C. Cely, Late Caddo

41AN10, Arthur Holsumber, Late Caddo

41AN13, Jowell, Historic Caddo

41AN14, Isabel-Gene Donnell, Late Caddo

41AN16, DeLong Farm, Late Caddo

41AN18, Rube Beard, Late Caddo

41AN21, Emma Owens, Historic Caddo

41AN23, Rose Daniels, Late Caddo

41AN26, Richard Patton, Historic Caddo

41AN27, Hog Farm, Caddo

41AN28, Amick, Late Caddo

41AN32, Fred McKee, Late Caddo-Historic Caddo

41AN34, Pierce Freeman, Late Caddo-Historic Caddo

41AN35, Albert Williamson, Late Caddo

41AN36, Edward W. Ellis, Late Caddo

41AN37, Ray Lockabaugh, Late Caddo

41AN38, Lang Pasture, Middle-Late Caddo

41AN39, R. E. Daly, Late Caddo

41AN41, W. D. Connor, Late Caddo

41AN44, Jasper Tucker/Mrs. Joe Watkins, Late Caddo

41AN51, Pace McDonald, Early Caddo-Middle Caddo

41AN52, W. Todd, Late Caddo

41AN53, Ballard Estate, Late Caddo

Table 2. Cemeteries and Burial Sites in East Texas and Northwest Louisiana, cont.

Trinomial/County, Site Name, and Age

41AN54, O. L. Ellis, Late Caddo-Historic Caddo
41AN56, Lee Ellis, Late Caddo
41AN57, Dabbs Estate, Late Caddo
41AN67, Pipe/Ferguson, Late Caddo
41AN184, Green, Historic Caddo
41AN201/41HE7, A. S. Mann, Late-Historic Caddo

41BW1, J. L. Walker, Caddo
41BW2, Eli Moores, Late-Historic Caddo
41BW3, Hatchel, Late Caddo
41BW4, Paul Mitchell, Middle-Late Caddo
41BW5, Roseborough Lake, Historic Caddo
41BW8, Stover Lake, Middle Caddo-Late Caddo
41BW14, Horace Cabe, Late Caddo
41BW18, Molly Cameron/W. K. Cameron, Late Caddo
41BW50, Warren, Late Caddo
41BW55, Clayborn Springs, Woodland and Caddo
41BW57, Berry Farm, Late Caddo
41BW65, Swen Farm, Historic Caddo
41BW72, Wagnon, Late Caddo
41BW76, Late Caddo
41BW89, Late Caddo
41BW98, Aiken Creek, Late Caddo
41BW100, Springhill Lake, Late Caddo
41BW117, cremations, Woodland
41BW119, Cabe I, Caddo
41BW120, Late Caddo
41BW125, Raffield Farm, Late Caddo
41BW134, Late Caddo
41BW150, Caddo
41BW171, Cranfill, Middle Caddo
41BW223, Caddo
41BW250, Howard Martin, Caddo
41BW512, Indian Springs #2, Historic Caddo
41BW693, Barkman, Middle and Late Caddo

41CE___, H. C. Slider, Late Caddo
41CE___, R. G. Upton, Late Caddo
41CE___, 392/Ch-1, Late Caddo-Historic Caddo
41CE3, Solon Stanley, Late Caddo
41CE4, Mrs. J. W. Blackburn, Late Caddo
41CE6, E. W. Hackney, Historic Caddo
41CE7, Regan/Reagan, Caddo
41CE8, J. M. Snow, Late Caddo
41CE11, Farris, Caddo

Table 2. Cemeteries and Burial Sites in East Texas and Northwest Louisiana, cont.

 Trinomial/County, Site Name, and Age

41CE12, Jim P. Allen, Historic Caddo
 41CE14, Omer and Otis Hood, Late Caddo
 41CE15, A. H. Reagor, Late Caddo-Historic Caddo
 41CE17, E. W. Henry, Late Caddo
 41CE18, W. T. Brooks, Late Caddo
 41CE19, George C. Davis, Early Caddo
 41CE20, R. F. Wallace, Historic Caddo
 41CE23, John Bragg, Late Caddo
 41CE25, R. J. Fair, Late Caddo-Historic Caddo
 41CE40, J. Evetts Haley/N. B. Ruggles, Late Caddo
 41CE42, Will Odham, Caddo
 41CE43, J. B. Maxwell, Historic Caddo
 41CE45, Late Caddo
 41CE47, Late Caddo
 41CE48, Caddo
 41CE53, Caddo
 41CE290, Forest Mound, Early Caddo
 41CE293, Brooks Lindsey, Historic Caddo
 41CE294, Grady Singletary, Late Caddo
 41CE305, Jacker, Late Caddo
 41CE309, Mud Creek/Damon Ramey, Late Caddo
 41CE421, Faulkinberry, Late Caddo-Historic Caddo

41CP___, C. Kennedy #2, Caddo
 41CP___, Couch Mountain, Caddo
 41CP___, Albert Hilton Farm, Late Caddo
 41CP___, Boyd Farm, Caddo
 41CP2, P. S. Cash, Late Caddo
 41CP3, George Rumsey, Late Caddo
 41CP4, E. S. Dooley, Late Caddo
 41CP5, Tuck Carpenter, Late Caddo
 41CP7, A. C. Riley, Late Caddo
 41CP10, Harold Williams, Middle and Late Caddo
 41CP12, Johns, Late Caddo
 41CP13, R. A. Watts #1, Late Caddo
 41CP14, R. A. Watts #2, Late Caddo
 41CP15, Caddo
 41CP17, Lower Peach Orchard, Late Caddo
 41CP20, B. J. Horton, Late Caddo
 41CP22, New Island, Late Caddo
 41CP25, Peach Orchard Overlook, Early Caddo
 41CP71, Shelby/Greasy Creek, Late-Historic Caddo
 41CP76, Pug Wilson, Late Caddo
 41CP78, Cecil Guest, Late Caddo
 41CP221, Late Caddo

Table 2. Cemeteries and Burial Sites in East Texas and Northwest Louisiana, cont.

 Trinomial/County, Site Name, and Age

- 41CP225, Oil-topped, Late Caddo
 41CP238, French-Daily, Late Caddo
 41CP244, Woody Michener, Late Caddo
 41CP245, Polk Estates, Late Caddo
 41CP261, Right Twin Cove, Late Caddo
 41CP304, Pilgrim's Pride, Late Caddo
 41CP317, Late Caddo
 41CP350, Late Caddo
 41CP408, Hickory Hill, Middle Caddo
 41CP490, Wa'akas, Late Caddo
 41CP493, Linebarger, Late Caddo
- 41CS___, Knight's Bluff No. 2, Historic Caddo
 41CS___, A. P. Fourche (ET-509), Historic Caddo
 41CS___, R. A. Simpson (ET-501), Historic Caddo
 41CS___, Red Martin, Middle-Late Caddo
 41CS1, Coker, Middle Caddo
 41CS5, Old Moore Place, Historic Caddo
 41CS6, Mack Spence, Early Caddo
 41CS8, Snipes, Woodland, Middle Caddo
 41CS10, Fannie Snipes #1, Late Caddo
 41CS14, Knight's Bluff, Middle-Late Caddo
 41CS21, Third Glass, Late Caddo
 41CS23, Goode Hunt, Historic Caddo
 41CS25, Clements, Historic Caddo
 41CS26, Sherwin, Middle Caddo-Historic Caddo
 41CS27, Late Caddo
 41CS35, Atlanta State Park Boat Ramp, Late Caddo
 41CS37, Armstrong Landing/Cass County Park, Historic Caddo
 41CS125, Mill Creek, Middle Caddo-Late Caddo
 41CS132, Avinger Rest Stop/Carl Owens, Middle Caddo
 41CS133, Pruitt Lake, Late Caddo
- 41DT1, Manton Miller, Early Caddo
 41DT3, Caddo
 41DT6, Tick, Early Caddo
 41DT16, Hatzenbuehler Burial, Early Caddo
 41DT21, L. O. Ray, Early Caddo
 41DT80, Thomas, Early Caddo
 41DT124, Doctors Creek, Early Caddo
- 41FK___, Good Hope, Late Caddo
 41FK1, Jonah C. Atkinson, Late Caddo
 41FK2, J. E. Galt, Late Caddo
 41FK3, R. L. Jagers, Woodland-Early Caddo

Table 2. Cemeteries and Burial Sites in East Texas and Northwest Louisiana, cont.

Trinomial/County, Site Name, and Age

- 41FK4, M. Gandy, Late Caddo
 41FK5, B. J. Connally, Late Caddo
 41FK6, S. P. Brown, Late Caddo
 41FK7, P. G. Hightower, Late Caddo
 41FK32, A. D. Stocks, Late Caddo
 41FK35, Late Caddo
 41FK70, Middle Caddo
 41FK96, J. Wright, Late Caddo
 41FK97/139, Middle Caddo
 41FK107, New Hope, Middle Caddo
- 41FN12, Goss Farm, Middle Caddo
 41FN17, Caddo
 41FN21, Caddo
 41FN22, Caddo
 41FN27, Caddo
- 41FT5, Big Brown, Caddo
- 41GG___, Hyte, Late Caddo
 41GG___, Glade Creek at Oil Lease, Late Caddo
 41GG___, Panther Creek, Late Caddo
 41GG___, Witcher/Glade Creek, Late Caddo
 41GG3, Kinsloe, Historic Caddo
 41GG5, Middle Caddo
 41GG8, Caddo
 41GG31, Ware Acres, Historic Caddo
 41GG33, Grace Creek #1, Woodland-Early Caddo
 41GG50, Joe Smith, Middle Caddo
 41GG51, Teneryville #2, Early Caddo and Late Caddo
 41GG53, Matt McGrede, Late Caddo
 41GG54, Whatley, Late Caddo
 41GG55, Dickson, Late Caddo
 41GG56, Mud Creek, Late Caddo
- 41HE___, 392/H1-2, Late Caddo
 41HE4/55, L. B. Miller, Late Caddo
 41HE46, Caddo
 41HE47, Bazette Bridge, Early Caddo
 41HE56, G. F. Thrasher, Late Caddo
 41HE61, Wild Bull, Caddo
 41HE75, DeRossett, Late Caddo
 41HE78, Newt Smith, Late Caddo
 41HE80, Woldert, Late Caddo
 41HE82, E. Harold Fowler, Late Caddo

Table 2. Cemeteries and Burial Sites in East Texas and Northwest Louisiana, cont.

Trinomial/County, Site Name, and Age

41HE109, Tarkington House, Caddo

41HE114, Attaway, Late Caddo

41HE137, Late Caddo

41HE181, Caddo

41HE184, Late Caddo

41HE235, Late Caddo

41HE243, Spillway Ridge, Caddo

41HE261, Late Caddo

41HO2, Curb Smith, Late Caddo

41HO64, George Moore #1b, Historic Caddo

41HO65, George Moore #1c, Historic Caddo

41HO70, Middle Caddo

41HO122, Historic Caddo

41HP ___, Lake Sulphur Springs, Late Caddo

41HP ___, Sulphur Bluff Oilfield, Caddo

41HP ___, W. Watkins Farm, Late Caddo

41HP ___, Bill Floyd Farm, Late Caddo

41HP ___, Steinbeck Farm, Late Caddo

41HP ___, Combs Farm, Late Caddo

41HP1, H. L. Culpepper, Late Caddo

41HP2, E. B. Minter, Middle Caddo

41HP3, B. W. Davis, Woodland, Caddo

41HP4, R. H. Taylor, Middle Caddo

41HP5, Jess Alford, Middle Caddo

41HP9, Helman Hathcoat, Middle-Late Caddo

41HP11, Tom Cannon, Caddo

41HP15, Roger Attaway, Late Caddo

41HP26, J. B. Sparkman, Late Caddo

41HP78, Lawson, Woodland and Early Caddo

41HP102, Arnold, Early Caddo

41HP105, Cox, Woodland, Early Caddo

41HP106, Hurricane Hill, Woodland, Middle Caddo

41HP237, Tuinier Farm, Late Caddo

41HP239, Odell, Late Caddo

41HP253, Late Caddo

41HS ___, Darco (HC 32), Early Caddo

41HS ___, Darco Coal Mine, Late Caddo

41HS ___, Marshall Red Gully, Late Caddo

41HS ___, Eli Fields, Middle Caddo

41HS ___, Tejas Village, Late Caddo

41HS ___, Skiles, Middle Caddo

41HS ___, Loftis (HC-53), Late Caddo

Table 2. Cemeteries and Burial Sites in East Texas and Northwest Louisiana, cont.

Trinomial/County, Site Name, and Age

- 41HS___, Pearl Smith (HC-60), Late Caddo
- 41HS___, Mrs. Martin Farm, Late Caddo
- 41HS___, Moccasin Creek #1, Late Caddo
- 41HS___, Moccasin Creek #2, Late Caddo
- 41HS___, CJ&D Lease, Late Caddo
- 41HS1, W. L. Ormes, Late Caddo
- 41HS2, J. H. Chadd, Late Caddo
- 41HS3, H. R. Taylor, Late Caddo
- 41HS5, Williams, Late Caddo
- 41HS11, Jodie Bender, Late Caddo
- 41HS13, Susie Slade, Historic Caddo
- 41HS14, Roden/Tina Resch, Late Caddo
- 41HS15, Pine Tree, Late Caddo
- 41HS74, Early Caddo-Middle Caddo
- 41HS144, Middle Caddo
- 41HS235, Keasler, Late Caddo
- 41HS253, Peterson Ranch, Late-Historic Caddo
- 41HS254, Late Caddo
- 41HS261, Henry Brown #1/J. O. and Henry Brown, Historic Caddo
- 41HS262, Henry Brown #2, Historic Caddo
- 41HS269, C. D. Marsh, Late Caddo-Historic Caddo
- 41HS489, 1992C, Middle Caddo
- 41HS524, Gray's Pasture, Middle Caddo
- 41HS574, Coleman Farm, Middle Caddo and Historic Caddo
- 41HS577, D. C. Washout, Caddo
- 41HS718, Middle Caddo
- 41HS770, Historic Caddo
- 41HS825, Pea Patch/Patton, Late Caddo
- 41HS826, Pine Grove, Late Caddo
- 41HS828, Heart Attack Hill, Late Caddo

- 41HU22, Caddo

- 41JP24, Gravel Pit No. 1, Late Caddo

- 41KF7, Caddo
- 41KF9, W. B. Kirby Place, Early Caddo

- 41LR___, George Preston, Woodland
- 41LR1, Womack, Middle Caddo and Historic Caddo
- 41LR2, T. M. Sanders, Middle Caddo and Historic Caddo
- 41LR3, Caddo
- 41LR4, Caddo
- 41LR7, Emory Land, Caddo
- 41LR8, Goosby, Caddo

Table 2. Cemeteries and Burial Sites in East Texas and Northwest Louisiana, cont.

Trinomial/County, Site Name, and Age

41LR9, Suggs, Caddo
41LR12, Caddo
41LR35, Arthur City, Middle Caddo
41LR36, Roy Young, Early Caddo
41LR37, Allen Reed, Middle Caddo
41LR38, Sharp, Middle Caddo
41LR39, A. C. Mackin, Middle Caddo
41LR86, Caddo

41MR___, Anjo, Middle Caddo
41MR___, Boggy Creek, Late Caddo
41MR1, Isadore Segal, Late Caddo
41MR4, Big Oaks/Mims, Late Caddo
41MR6, A. V. Younger, Middle Caddo
41MR12, Ben McKinney, Late Caddo
41MR13, W. M. Dickson, Late Caddo
41MR24, Hancock Farm, Late Caddo
41MR51, Early-Middle Caddo
41MR63, Pleasure Point, Late Caddo
41MR74, Mims Chapel, Late Caddo
41MR110, Sunview, Late Caddo
41MR122, Sandy Creek, Late Caddo

41MX___, Tom Ball Place, Historic Caddo
41MX___, Tom Byrd, Late Caddo
41MX___, Harold Nix, Late Caddo
41MX1, R. L. Cason, Late Caddo
41MX2, Joe Justiss, Late Caddo
41MX4, Starett, Late Caddo
41MX5, Murphy Branch, Late Caddo
41MX6, Richard Watson, Late Caddo
41MX9, Lone Star Steel, Late Caddo
41MX10, M. Haley, Late Caddo
41MX14, Late Caddo
41MX21, Joe Justiss, Late Caddo
41MX26, Fig Tree, Late Caddo
41MX28, Daingerfield Water Intake, Late Caddo
41MX65, West Island/Lone Star Lake, Late Caddo

41NA___, King Place (ET-881), Historic Caddo
41NA___, Joe Little, Historic Caddo
41NA___, W. T. Williamson, Historic Caddo
41NA___, Indian Creek, Caddo
41NA___, Appleby Bead, Historic Caddo
41NA3, Gatewood, Late Caddo

Table 2. Cemeteries and Burial Sites in East Texas and Northwest Louisiana, cont.

 Trinomial/County, Site Name, and Age

41NA11, Etoile, Late Caddo
 41NA12, C. M. Langford, Late Caddo
 41NA13/27, Deshazo, Historic Caddo
 41NA15, J. T. King, Historic Caddo
 41NA16, H. G. Moore, Late Caddo
 41NA17, Shirley Creek, Late Caddo
 41NA18, Late Caddo
 41NA20, Caddo
 41NA23, Loco Bottom, Historic Caddo
 41NA49, Washington Square, Middle Caddo
 41NA95, Plywood Plant, Caddo
 41NA113, Historic Caddo
 41NA133, Herbert Lowery #2, Late Caddo
 41NA135, Etoile Park, Caddo
 41NA202, Stephens Farm, Historic Caddo
 41NA231, Tallow Grove, Middle Caddo
 41NA242, Beech Ridge, Middle Caddo
 41NA285, Boyette, Middle Caddo
 41NA340, A. L. Self, Historic Caddo

41PN___, Beckville, Caddo
 41PN___, H. L. English Farm, Caddo
 41PN___, Moore Land Lease, Late Caddo
 41PN5, T. C. Adams, Middle Caddo
 41PN15, W. B. Stillwell, Middle Caddo
 41PN48, Caddo

41RA4, T. F. Jones, Caddo
 41RA38, Seaton Bros., Middle Caddo

41RK___, Bead Burial (41RK3?), Historic Caddo
 41RK___, L. N. Morwell (41RK3?), Historic Caddo
 41RK1, W. M. Gatlin, Historic Caddo
 41RK2, Tom Shumate, Early Caddo
 41RK3, Millsey Williamson, Historic Caddo
 41RK79, Sand, Middle Caddo
 41RK80, Big Head Creek #1, Middle Caddo
 41RK129, R. McFarland, Caddo
 41RK132, Cherokee Lake/Tiawichi Creek Burial, Historic Caddo
 41RK163, Cherokee Bayou, Caddo
 41RK170, Nawi haia ina, Middle Caddo
 41RK176, Late Caddo (Hughes RU4)
 41RK214, Oak Hill Village, Middle Caddo
 41RK602, Sipes Hill, Late Caddo

Table 2. Cemeteries and Burial Sites in East Texas and Northwest Louisiana, cont.

Trinomial/County, Site Name, and Age

41RR___, Jerry Chandler, Caddo
41RR___, Mrs. Joe Skinner/Abe Cox Place, Late Caddo
41RR___, Jim Clark, Late Caddo
41RR1, Atkinson Farm, Late Caddo
41RR2, Frank Norris Farm, Early Caddo and Late Caddo
41RR3, T. N. Coles, Early Caddo
41RR6, Old Rocks Ferry, Caddo
41RR7, Wright Plantation, Late-Historic Caddo
41RR8, S. E. Watson, Middle-Late Caddo
41RR9, Hooks Ferry, Late Caddo
41RR10, Howard Hampton, Late Caddo
41RR11, Holdeman, Late Caddo
41RR12, Joplin, Late Caddo
41RR13, J. Norwood, Late Caddo
41RR14, Fasken, Middle Caddo
41RR16, Sam Kaufman and Bob Williams, Middle-Late Caddo-Historic Caddo
41RR41, Bentsen-Clark, Early Caddo-Late Caddo
41RR48, Neely, Caddo
41RR65, Middle Caddo
41RR74, Caddo
41RR77, Rowland Clark, Late Caddo
41RR93, Caddo
41RR181, Christopher Branch, Caddo
41RR194, Cheatwood Locality, Woodland
41RR197, Drew Place, Middle Caddo
41RR198, Brooks Place, Caddo

41SA___, Luther Howell, Historic Caddo
41SA5, Caddo
41SA13, Caddo
41SA24, Allan Howill, Historic Caddo
41SA25, Mission Dolores, Historic Caddo
41SA26, Late Caddo
41SA40, Caddo
41SA41, Historic Caddo
41SA50, Caddo
41SA83, Late Caddo
41SA84, Willie Wells, Caddo
41SA89, Sawmill, Late Caddo
41SA94, Wylie Price, Late-Historic Caddo
41SA101, Jonas Short, Woodland
41SA102, Old Indian Cemetery, Caddo
41SA116, McElroy, Historic Caddo

41SB19, Caddo

Table 2. Cemeteries and Burial Sites in East Texas and Northwest Louisiana, cont.

 Trinomial/County, Site Name, and Age

41SB22, O. O. Pate, Late Caddo
 41SB23, Late Caddo
 41SB29, Late Caddo
 41SB35, Caddo
 41SB36, Print Bell, Middle Caddo
 41SB37, Louis Bradshaw, Caddo
 41SB38, Late Caddo
 41SB40, Caddo
 41SB50, Walter Bell, Late Caddo

41SM___, Saline Creek, Late Caddo
 41SM___, Byars Ranch, Late Caddo
 41SM___, Indian Creek, Late Caddo
 41SM2, W. J. Barnett, Late Caddo
 41SM8, Caddo (Hughes SM13)
 41SM30, Caddo (Hughes SM42)
 41SM43, Woldert, Caddo
 41SM48, Rasco, Caddo
 41SM51, Dr. Smith, Early Caddo
 41SM53, P-4, Middle Caddo
 41SM54, Jamestown, Middle Caddo
 41SM55, Bryan Hardy, Middle Caddo
 41SM56, Henry Chapman, Early Caddo
 41SM61, Late Caddo
 41SM73, Joe Meyers Estate #1, Early Caddo-Late Caddo
 41SM74, Late Caddo
 41SM77, Vanderpool, Late Caddo-Historic Caddo
 41SM79, Late Caddo
 41SM90, Late Caddo
 41SM93, Late Caddo
 41SM116, Caddo
 41SM144, Hawkins, Caddo (Whiteside SM26)
 41SM150, Red McFarland, Middle Caddo
 41SM151, Cedar Bay, Late Caddo
 41SM158, William Sherman, Late Caddo
 41SM193, Redwine, Middle Caddo
 41SM197, Langford, Middle Caddo
 41SM198, Pardee, Middle Caddo
 41SM246, John Ellis, Middle Caddo
 41SM249, Cedar Bay, Late Caddo
 41SM290, Late Caddo
 41SM294, Late Caddo
 41SM355, Jay Tullos, Late Caddo
 41SM468, Trant, Late Caddo
 41SM476, Honey Locust, Middle Caddo

Table 2. Cemeteries and Burial Sites in East Texas and Northwest Louisiana, cont.

Trinomial/County, Site Name, and Age

41SY1, Late Caddo
41SY24, Joseph Fabion Farm, Caddo
41SY25, S. H. Lothem, Caddo
41SY27, Morse's Mound, Late Caddo
41SY34, I. D. Cook, Caddo
41SY41, Robert Griffin, Middle-Late Caddo
41SY42, Late Caddo
41SY92, Tyson, Middle Caddo

41TL11, Late Caddo
41TL13, Sturrock Place, Late Caddo-Historic Caddo
41TL14, C. M. Davis, Late Caddo
41TL20, Late Caddo

41TT___, WS, Late Caddo
41TT___, Dellwood Branch, Late Caddo
41TT___, Piney Creek, Late Caddo
41TT___, Swanano, Middle Caddo
41TT___, Barnett, Late Caddo
41TT1, William Farrar, Late Caddo
41TT2, W. A. Ford, Early Caddo and Late Caddo
41TT3, Hooper/Glover Farm, Caddo
41TT4, A. P. Williams, Late Caddo
41TT5, Harts Bluff, Late Caddo
41TT6, Thomas B. Caldwell, Late Caddo
41TT7, Russell Brothers Farm, Late Caddo
41TT11, George L. Keith, Late Caddo
41TT13/111, Alex Justiss, Late Caddo
41TT17, C. T. Coley, Late Caddo
41TT18, Duncan Anderson, Late Caddo
41TT21, Late Caddo
41TT29, Caddo
41TT36, Tigert, Middle Caddo
41TT54, O. P. Hall, Late Caddo
41TT62, Wofford, Late Caddo
41TT64, Caddo
41TT67, Caddo
41TT96, Garretson, Late Caddo
41TT108, Tankersley Creek, Caddo
41TT110, Benson's Crossing, Late Caddo
41TT111, Late Caddo
41TT119, Scotty Scott, Late Caddo
41TT124, Fourth Tower, Early Caddo
41TT125, Fourth Tower B, Late Caddo
41TT126, Fifth Tower, Late Caddo

Table 2. Cemeteries and Burial Sites in East Texas and Northwest Louisiana, cont.

 Trinomial/County, Site Name, and Age

41TT135, Middle Caddo
 41TT192, Late Caddo
 41TT221, Late Caddo
 41TT226, Middle Caddo
 41TT320, Covey, Historic Caddo
 41TT321, Roger Simmons, Early Caddo
 41TT550, Mockingbird, Late Caddo
 41TT643, Lost Indian, Historic Caddo
 41TT650, Crabb, Middle Caddo
 41TT653, Ear Spool, Late Caddo
 41TT716, Late Caddo
 41TT717, Stephens Barn, Late Caddo
 41TT723, Jack Morris, Late Caddo
 41TT725, State Park, Late Caddo
 41TT726, Sandlin Dam, Late Caddo
 41TT729, Tarp, Late Caddo
 41TT730, J. McKay, Late Caddo
 41TT741, W-S, Late Caddo
 41TT804, Road Island, Late Caddo
 41TT852, William Ford, Late Caddo
 41TT853, James Richey, Late Caddo
 41TT891, Cedar Island, Late Caddo
 41TT892, Monticello TXU Park, Late Caddo

41UR___, CK 1, Caddo
 41UR___, IE-61, Historic Caddo
 41UR___, Meddln Creek, Late Caddo
 41UR___, West Meddlin Creek, Late Caddo
 41UR___, Maughan/Moughon, Late Caddo
 41UR___, Keeling, Late Caddo
 41UR___, Jesse Glasco, Late Caddo
 41UR___, A. Davis, Late Caddo
 41UR___, Lake Gladewater, Late Caddo
 41UR1, W. O. Reed, Late Caddo
 41UR2, J. M. Riley, Late Caddo
 41UR3, W. C. Henderson-Southall, Late Caddo
 41UR4/99, Z. V. Davis-McPeck, Early Caddo
 41UR5, W. L. Willeford, Late Caddo
 41UR6, Lasco, Late Caddo
 41UR7, J. H. Brown, Late Caddo
 41UR8, Middle Caddo
 41UR10, Harroun, Late Caddo
 41UR12, Jake Martin, Late Caddo

Table 2. Cemeteries and Burial Sites in East Texas and Northwest Louisiana, cont.

Trinomial/County, Site Name, and Age

41UR17, Graydon Adkins #2, Late Caddo
41UR18, W. S. Chastain (or Chasteen), Late Caddo
41UR21, Graydon Adkins #1, Late Caddo
41UR30, Boxed Spring, Early Caddo
41UR31, S. Blackstone, Late Caddo
41UR32, Late Caddo
41UR106, Lasco, Late Caddo
41UR107, Gold Star Ballroom, Late Caddo
41UR109, Barber's Bottom, Late Caddo
41UR133, Rookery Ridge, Middle-Late Caddo
41UR137, Cedar Springs, Late Caddo
41UR143, Spider Lily, Late Caddo
41UR144, Camp Joy, Late Caddo
41UR207, Sugar Creek, Late Caddo
41UR208, Sword, Late Caddo
41UR210, 852 Bridge, Late Caddo
41UR272, Redware, Late Caddo
41UR273, Dixon Creek, Late Caddo
41UR315, Henry Spencer, Late Caddo-Historic Caddo
41UR317, Enis Smith, Late Caddo-Historic Caddo
41UR318, Henry Williams, Late Caddo-Historic Caddo
41UR319, I. P. Starr, Late Caddo
41UR320, Herbert Taft, Late Caddo-Historic Caddo
41UR326, Frank Smith, Late Caddo-Historic Caddo
41UR327, Frank Smith Refinery, Late Caddo

41VN1, J. E. Humphries, Caddo
41VN2, John T. Cox, Caddo
41VN3, T. M. Joslin, Middle Caddo
41VN6, Yarbrough, Middle Caddo
41VN13, Goose Lake, Caddo
41VN35, Fruitvale, Middle Caddo

41WD1, A. C. Gibson, Middle Caddo
41WD2, J. H. Reese, Late Caddo
41WD4, H. R. Spigner, Middle Caddo
41WD5, Mattie Dial, Middle Caddo
41WD14, B. F. Cathey, Late Caddo
41WD16, Minnie Garrison, Late Caddo
41WD19, 1959S, Late Caddo
41WD20, Turbeville, Late Caddo
41WD25, Gus Bogan, Late Caddo
41WD30, W. O. Ziegler Farm, Late Caddo
41WD31, Claude Burkett, Late Caddo
41WD33, J. H. Baker, Late Caddo

Table 2. Cemeteries and Burial Sites in East Texas and Northwest Louisiana, cont.

 Trinomial/County, Site Name, and Age

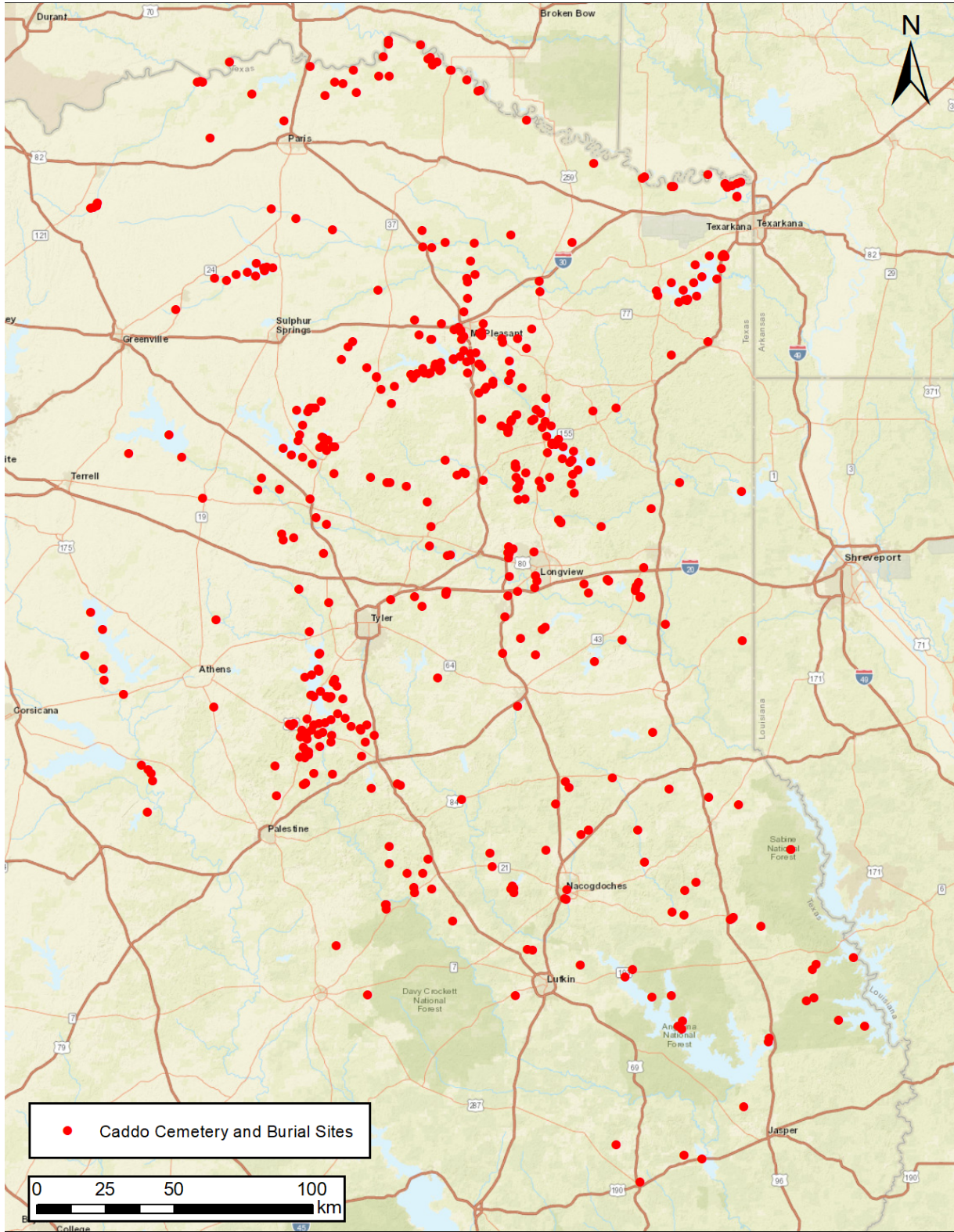
41WD43, Late Caddo
 41WD44, 1972S, Late Caddo
 41WD45, YBS, Late Caddo
 41WD52, M. W. Burks, Late Caddo
 41WD57, Holly Lake Ranch, Late Caddo
 41WD60, Quitman Lake/QLBS, Late Caddo-Historic Caddo
 41WD73, Osborn, Woodland
 41WD108, Sandhill, Late Caddo
 41WD109, Spoonbill, Middle-Late Caddo-Historic Caddo
 41WD117, Roadcut, Middle Caddo
 41WD206, 1973S, Late Caddo-Historic Caddo
 41WD208, Goldsmith, Late Caddo
 41WD244, Middle Caddo
 41WD354, Whooping, Late Caddo
 41WD371, Charlie Crews, Middle Caddo
 41WD382, Bob Turbeville, Middle Caddo
 41WD503, Grimes, Early Caddo
 41WD511, Late Caddo
 41WD524, Hoosier School, Late Caddo
 41WD533, Jessie Rogers, Late Caddo
 41WD538, Gilbreath, Late Caddo
 41WD586, Turquoise (Arnold Glenn #2), Late Caddo
 41WD589, Late Caddo

interments, and the burials of elite individuals in burial mounds and shaft tombs in mounds covering burned special structures.

Early Caddo cemeteries and burial sites account for only 6.1 percent of the Caddo cemeteries of known age in East Texas (see Tables 1 and 2). This likely suggests that Caddo populations at this time, during the beginnings of groups and communities, were relatively low and perhaps concentrated at a few nexuses, including the multiple mound centers and associated villages, such as at George C. Davis (41CE19, see Story 1997, 1998) and Boxed Springs (41UR30, Perttula 2017:61). Other Early Caddo period cemeteries and burial sites are noted in Delta and Hopkins counties at sites in the Blackland Prairie along the South Sulphur River, in the Pineywoods in Smith County, and in the Post Oak Savanna in Red River County.

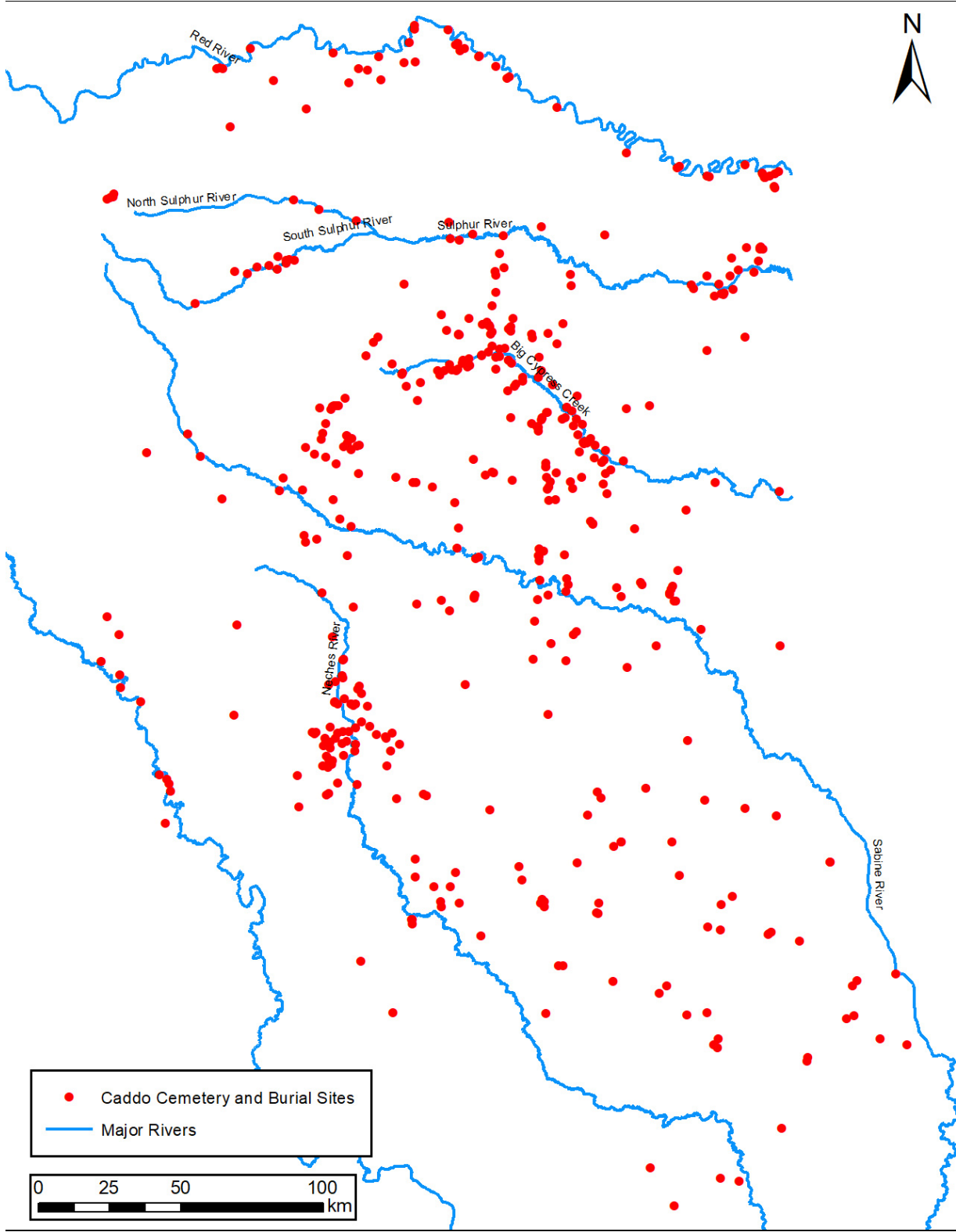
In the Middle Caddo period, cemeteries and burial sites are most common in the Pineywoods and Post Oak Savanna in the Sabine River basin in Harrison (n=7), Smith (n=9), and Wood (n=7) counties. Overall, 15.7 percent of the Caddo cemeteries and burial sites of known age in East Texas date to the Middle Caddo period. There are well-known and extensive cemeteries at the Paul Mitchell (41BW4) and T. M. Sanders (41LR2) sites on the Red River, and 41HS144 in the Sabine River basin (Fields and Gadus 2012:Figure 5.35).

More than 65 percent of the Caddo cemeteries and burial sites of known age in East Texas date to the Late Caddo period (see Table 2). The majority of these cemeteries and burial sites are



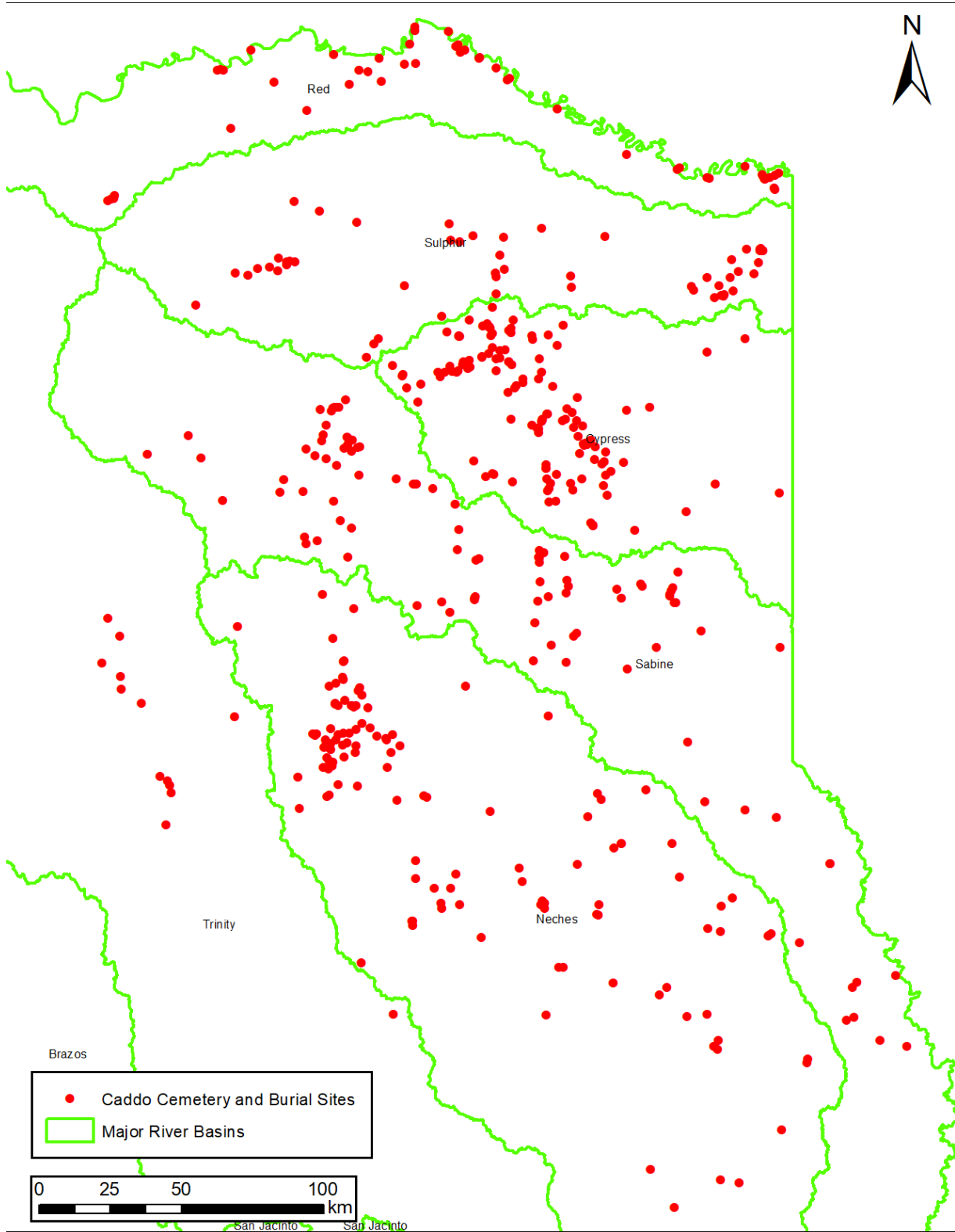
a

Figure 2. Plotted ancestral Caddo cemeteries and burial sites in East Texas: a, sites on the modern landscape.



b

Figure 2. Plotted ancestral Caddo cemeteries and burial sites in East Texas: b, locations of sites relative to major rivers.



c

Figure 2. Plotted ancestral Caddo cemeteries and burial sites in East Texas: c, locations of sites relative to major river basins. Figures prepared by Drew Sitters.

associated with Titus phase communities in the Big Cypress, Sabine, and Sulphur river basins—including cemeteries in Camp (n=28), Titus (n=38), Upshur (n=38), and Wood (n=27) counties in the Pineywoods and Post Oak Savanna—and Frankston phase communities in the Neches River basin, including Anderson (n=27), Cherokee (n=17), and Smith (n=16) counties, all in the Pineywoods (see Figure 2). The East Texas Caddo cemeteries and burial sites include family and community cemeteries; such cemeteries are especially well-known in Titus phase communities rather than among Frankston phase groups, and include sites such as Tuck Carpenter (41CP5), Henry Spencer (41UR315), and the Shelby Mound site with at least 119 burial pits (Perttula 2017:Figure 106). There are also large Late Caddo cemeteries on the Red River at the previously mentioned Paul Mitchell site as well as at the Sam Kaufman site (Skinner et al. 1969; Perttula 2017:144-145).

Caddo cemeteries and burial sites that postdate initial sustained European contact (i.e., after A.D. 1680) comprise 12.5 percent of the known East Texas sites. Most of these are either from Allen phase occupations in Anderson (n=8) and Cherokee (n=7) sites, Nasoni Caddo occupations in Cass County (n=7), including the Clements site (41CS25, see Perttula et al. 2010), Nadaco settlements and cemeteries in Harrison County (n=6, see Fields and Gadus 2012), and Hasinai Caddo occupations in Nacogdoches County (n=9). These cemeteries and burial sites are all in the East Texas Pineywoods.

Ancestral Woodland and Caddo Mound Sites

Of the 120 earthen mounds or probable earthen mounds identified in East Texas and Northwestern Louisiana along the Sabine River at Toledo Bend Reservoir, only two mounds dating to the Woodland period are known, both in the Pineywoods natural region, and in either the Sabine or Angelina River basins, respectively: Coral Snake (16SA48) and Jonas Short (41SA101). The remainder of the earthen mounds were constructed by ancestral Caddo communities (Table 3 and Figure 3).

Table 3. Woodland and Caddo Mound Sites in East Texas and Northwest Louisiana.

Trinomial/County, Site Name, and Age

16DS10/16DS289, James Pace, Early Caddo
 16SA7, Anthony, Caddo
 16SA40, Caddo
 16SA48, Coral Snake, Woodland

41AG18, Early Caddo

41AN19, A. C. Saunders, Late Caddo
 41AN51, Pace McDonald, Middle Caddo
 41AN60, E. T. Worley, Caddo

41BW___, C. W. Montgomery, Caddo
 41BW2, Eli Moores, Late-Historic Caddo
 41BW3/169/226, Hatchel, Late Caddo
 41BW14, Horace Cabe, Late Caddo

Table 3. Woodland and Caddo Mound Sites in East Texas and Northwest Louisiana, cont.

Trinomial/County, Site Name, and Age

41BW39, Hargrave Moores, Late Caddo
41BW53, Caddo
41BW76, Late Caddo
41BW168/41RR43, Black's Mound, Caddo

41CE19, George C. Davis, Early Caddo
41CE51, Larrison Creek, Caddo
41CE290, Forest Mound, Early Caddo

41CP2, Cash, Late Caddo
41CP8, Sam Roberts, Late Caddo
41CP24, Caddo
41CP25, Peach Orchard Overlook, Early Caddo
41CP71, Shelby, Late Caddo
41CP239, Tom Hanks, Late Caddo
41CP246, Tiddle Lake, Late Caddo
41CP304, Pilgrim's Pride, Late Caddo
41CP310, Frank Benson, Late Caddo

41CS1, Coker, Middle Caddo
41CS4, T. S. Montgomery, Caddo

41FN1, Harling, Middle Caddo

41HE8, M. S. Roberts, Middle Caddo

41HO15, Westerman, Early Caddo

41HS___, Darco Mound/Old Man's Site (HC 33), Early-Middle Caddo
41HS4, Lane Mitchell, Late Caddo
41HS12, Mound Pond #1, Early Caddo
41HS15, Pine Tree, Late Caddo
41HS29, Mound Pond #2, Early Caddo
41HS233, Late Caddo

41JP48, Caddo

41LR2, Sanders, Middle Caddo
41LR3, Reese, Caddo
41LR6, Robinson, Caddo
41LR35, Arthur City, Middle Caddo
41LR36, Roy Young, Early Caddo
41LR37, Allen Reed, Middle Caddo
41LR38, Sharp, Middle Caddo
41LR39, A. C. Mackin, Middle Caddo

Table 3. Woodland and Caddo Mound Sites in East Texas and Northwest Louisiana, cont.

Trinomial/County, Site Name, and Age

41MR2, Whelan, Late Caddo

41MR5, Caddo

41MR35, Clarence Wicker, Caddo

41MR59, Alvin Hood, Caddo

41MR63, Pleasure Point, Late Caddo

41NA49, Washington Square, Middle Caddo

41NW16, Goode Newton, Caddo

41PN___, Hendricks Lake, Caddo

41PN1, Grand Bluffs, Caddo

41PN8, Clear Lake, Late Caddo

41RA___, Pope, Caddo

41RA1/38, Seaton Bros., Middle Caddo

41RA31, Colony Church, Middle Caddo

41RK3, Millsey Williamson, Caddo

41RK4, Hudnall-Pirtle, Early Caddo

41RR2, Frank Norris, Early Caddo and Late Caddo

41RR3, T. M. Coles, Early Caddo

41RR7, Wright Plantation, Early Caddo

41RR8, S. E. Watson, Late Caddo

41RR11, Holdeman, Middle and Late Caddo

41RR14, Fasken, Middle Caddo

41RR16, Sam Kaufman, Middle-Late Caddo

41RR67, Chapman Plantation, Late Caddo

41RR68, Caddo

41RR77, Rowland Clark, Late Caddo

41RR190, Cheatwood Lake Bluffs, Middle Caddo

41RR200, Dawson Lake, Caddo

41SA48, Caddo

41SA101, Jonas Short, Woodland

41SB19, Caddo

41SB40, Caddo

41SB48, Money Mound, Caddo

41SM___, Reeves, Caddo

41SM7, Shuarts, Caddo

41SM54, Jamestown, Middle Caddo

Table 3. Woodland and Caddo Mound Sites in East Texas and Northwest Louisiana, cont.

 Trinomial/County, Site Name, and Age

41SM55, Bryan Hardy, Middle Caddo
 41SM62, Caddo
 41SM98, Caddo
 41SM110, Caddo
 41SM193, Redwine, Middle Caddo
 41SM246, John Ellis, Middle Caddo

41SY1, Late Caddo
 41SY4, J. M. Burns, Caddo
 41SY5, T. A. King, Late Caddo
 41SY15, Lafitte, Late Caddo
 41SY25, S. H. Lothem, Late Caddo
 41SY27, Morse Mound/Calvin Davis, Late Caddo
 41SY42, Brittain, Late Caddo
 41SY46, Beauchamp Creek, Late Caddo

41TL14, C. M. Davis, Late Caddo
 41TL19, Caddo

41TT11, George L. Keith, Middle Caddo
 41TT12, Hale, Early Caddo
 41TT653, Ear Spool, Late Caddo

41UR---, G. W. Jones, Caddo
 41UR4/99, Z. V. Davis-McPeck, Early Caddo
 41UR10, Harroun, Late Caddo
 41UR11, Dalton, Late Caddo
 41UR18, Chastain or Chasteen, Late Caddo
 41UR19, M. S. Ragland, Caddo
 41UR20, Caddo
 41UR30, Boxed Spring, Early Caddo
 41UR144, Camp Joy, Late Caddo

41VN___, I. M. Counts, Caddo
 41VN2, John T. Cox, Caddo
 41VN7, M. J. Speers, Caddo
 41VN13, Lee Joyner, Early-Middle Caddo
 41VN35, Fruitvale, Early Caddo

41WD7, B. G. Price, Early-Middle Caddo
 41WD8/11, A. N. Vickery-Kennedy, Late Caddo
 41WD9, J. O. McCreight, Early-Middle Caddo
 41WD55, McKenzie, Middle Caddo
 41WD349, Cox, Early-Middle Caddo

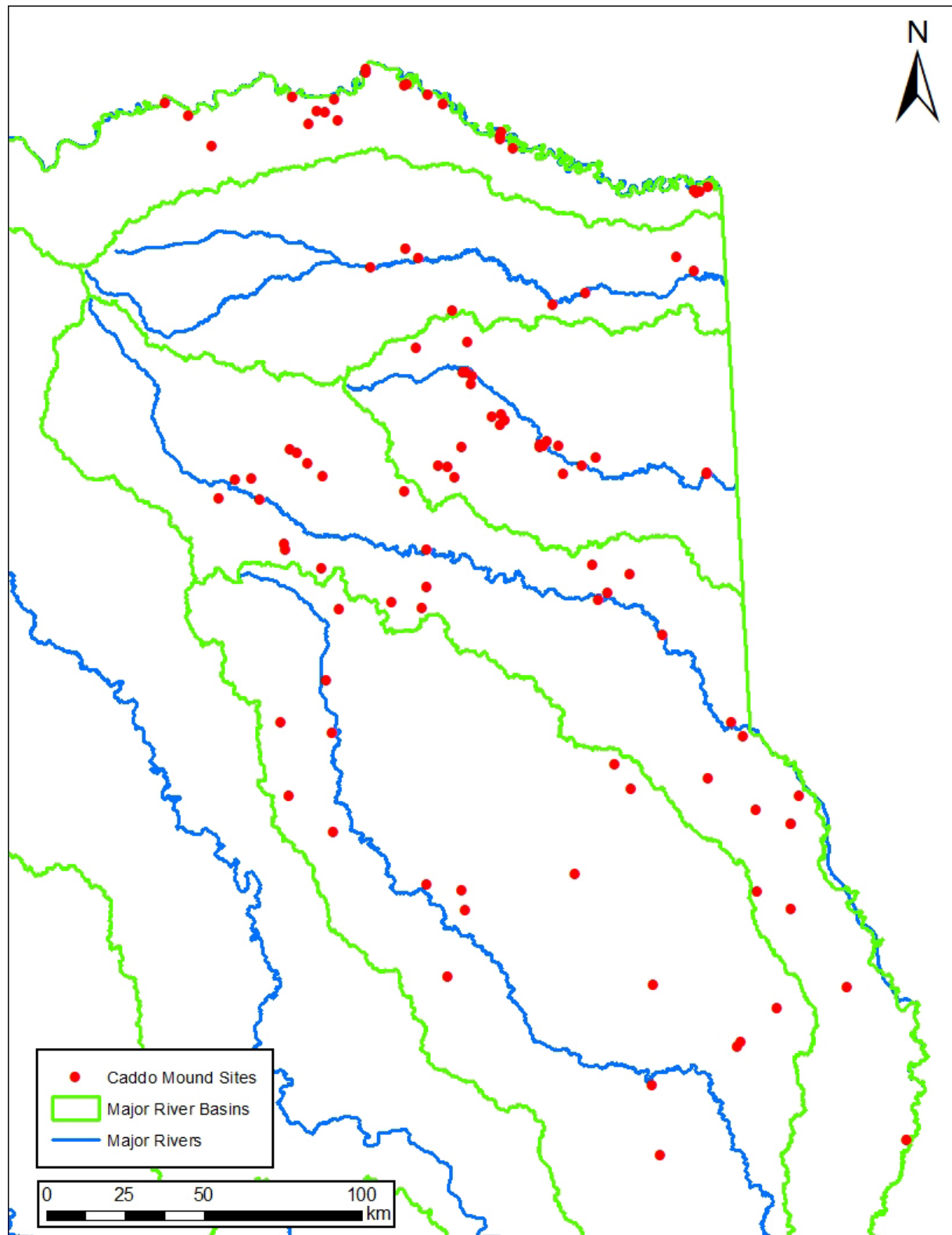


Figure 3. Mound sites in East Texas. Figure prepared by Drew Sitters.

The Caddo peoples constructed mounds (both single mound and multiple mound sites) across East Texas and Northwest Louisiana (see Perttula 2017:Figure 22). The highest densities of earthen mounds are in present-day Red River County (n=12) in the Post Oak Savanna; followed by Smith County (n=9) in the Pineywoods; Bowie County (n=8) in both the Pineywoods and a narrow strip of the Post Oak Savanna; Lamar County (n=8) in the Post Oak Savanna; and Camp (n=9) and Shelby (n=8) counties in the Pineywoods (see Figures 1 and 3 and Table 3).

Where chronological information is available (n=79, or 65.8 percent of the mound sample), 24 percent were constructed in Early Caddo times, 29 percent in Middle Caddo times, and 47 percent in Late Caddo period times. Early Caddo period mounds are most common in Harrison (n=3) and Red River (n=3) counties, either in the Pineywoods or the Post Oak Savanna. This includes mound sites such as Mound Pond (41HS12) (Goode et al. 2015) on Big Cypress Creek and mounds on both the Sulphur (41RR3) and Red rivers (41RR2 and 41RR7), but there are Early Caddo multiple mound centers at the George C. Davis (41CE19) site on the Neches River, the Hudnall-Pirtle (41RK4) and Boxed Springs (41UR30) sites on the Sabine River, and the L. A. Hale site (41TT12) in the Big Cypress Creek basin (see Perttula 2017:52-71).

In the Middle Caddo period, Caddo constructed earthen mounds are distributed in each of the main stream drainages in East Texas, but are apparently the most widely distributed in the Post Oak Savanna along the Red River in Lamar (n=5) and Red River (n=3) counties, and along the western margins of the Pineywoods in Smith (n=4) and Wood counties (see Figure 1). Middle Caddo multiple mound centers in these areas include perhaps the premier mound center at this time, the Jamestown site (41SM 54) in the Sabine River basin. This site has eight mounds, two plaza areas, and village deposits covering ca. 15 acres (Perttula 2017:Figure 57). Other Sabine River basin mounds were built by the Caddo to cover important structures. On the Red River, there is a significant multiple mound center at the T. M. Sanders site (41LR2); one of the two mounds there is a platform that covered four levels of buried structures, and the other is a burial mound with single and multiple interments and an array of associated funerary objects (Krieger 1946). The settlement associated with the Sanders mounds covers ca. 200 acres (Perttula 2017:Figure 61). Another significant multiple mound center that was used in Middle Caddo period times is the Washington Square Mound (41NA49) in the Angelina River basin (Hart and Perttula 2010). The four mounds there were either built over important structures, or were used as a burial mound for elite Caddo individuals.

The number of Caddo earthen mounds in East Texas and Northwest Louisiana increased by 60 percent from Middle Caddo to Late Caddo period times. The 37 known mounds dating to the Late Caddo period are well represented on the Red River in Bowie (n=5) and Red River (n=4) counties and in the Pineywoods in present day Camp (n=7) and Shelby (n=7) counties (see Figure 1). Along the Red River in East Texas, certainly the most important mound center and village community was at the ca. A.D. 1500-1691 Hatchel site (41BW3) occupied by a Nasoni Caddo community. The large 30 ft. tall primary platform there had levels of buried and/or burned structures, often superimposed over one another (Perttula 2014). Other Red River basin mounds were built over important structures that were burned, and in some cases, as at the Sam Kaufman site (41RR16), a large shaft tomb with multiple individuals and many funerary offerings was then excavated through the floor of a burned structure (Perttula 2017:Figures 81-82).

In the Pineywoods, earthen mounds of Late Caddo age were key parts of local Caddo communities with mound centers, cemeteries, and villages in the Big Cypress Creek and Sabine River basins. The mounds have buried and burned structures in their deposits, and some, such as the Morse Mound site (41SY27), had a large shaft tomb excavated through a structure, which was then burned and capped with mound sediments (Perttula 2017:Figures 121-122). The Pine Tree Mound

site (41HS15) is the most impressive of the Titus phase mounds known in East Texas, as the site has three mounds, a plaza, associated habitation areas, and at least one cemetery (Fields and Gadus 2012) over at least a 14-acre area along a tributary to the Sabine River (Fields 2017:182-192).

Available archaeological information indicates that the Caddo practice of constructing and using earthen mounds for structure platforms on the mounds, for structures burned and buried below mounds, and for burial mounds of elite personages, did not continue past ca. 1691. The Hatchel mound and community was visited by Don Domingo Teran de los Rios in 1691, and the mound had a temple on the crest of the platform. Excavations in the mound in the late 1930s indicate that no further mound construction took place after 1691, and no European artifacts have been recovered from the latest construction and habitation zones in the mound.

Acknowledgments

I would like to thank colleagues that took the time to look over the cemetery/burial sites and mounds lists I have compiled for East Texas: Lee Green, Tom Middlebrook, Bo Nelson, Gary Cheatwood, and Mark Walters. Thanks also to Drew Sitters for preparing several maps for this article.

References Cited

- Fields, R. C.
2017 The Pine Tree Mound site. In *Caddo Landscapes in the East Texas Forests*, by T. K. Perttula, pp. 182-192. Oxbow Books, Oxford, United Kingdom.
- Fields, R. C. and E. F. Gadus (editors)
2012 *Archeology of the Nadaco Caddo: The View from the Pine Tree Mound Site (41HS15), Harrison County, Texas*. 2 Vols. Reports of Investigations No. 164. Prewitt and Associates, Inc., Austin.
- Hart, J. P. and T. K. Perttula
2010 The Washington Square Mound Site and a Southeastern Ceremonial Complex Style Zone among the Caddo of Northeastern Texas. *Midcontinental Journal of Archaeology* 35(2):199-228.
- Goode, G. T., T. K. Perttula, L. L. Bush, S. Marceaux, L. Schniebs, and J. Todd
2015 *Excavations at the Early Caddo Period Mound Pond Site (41HS12) in Harrison County, Texas*. Special Publication No. 38. Friends of Northeast Texas Archeology, Austin and Pittsburg.
- Kenmotsu, N. A. and T. K. Perttula (editors)
1993 *Archeology in the Eastern Planning Region, Texas: A Planning Document*. Cultural Resource Management Report 3. Department of Antiquities Protection, Texas Historical Commission, Austin.
- Krieger, A. D.
1946 *Culture Complexes and Chronology in Northern Texas, with Extensions of Puebloan Datings to the Mississippi Valley*. Publication No. 4640. The University of Texas, Austin.

Perttula, T. K.

2012 The Character of Fifteenth- to Seventeenth-Century Caddo Communities in the Big Cypress Creek Basin of Northeast Texas. In *The Archaeology of the Caddo*, edited by T. K. Perttula and C. P. Walker, pp. 363-410. University of Nebraska Press, Lincoln.

2014 *Archaeological Studies of the Hatchel Site (41BW3) on the Red River in Bowie County, Texas*. Special Publication No. 23. Friends of Northeast Texas Archaeology, Austin and Pittsburg.

2017 *Caddo Landscapes in the East Texas Forests*. Oxbow Books, Oxford, United Kingdom.

Perttula, T. K., D. B. Kelley, and R. A. Ricklis (assemblers and editors)

2011 *Archeological Investigations at the Lang Pasture Site (41AN38) in the Upper Neches River Basin of East Texas*. Report No. 129. Texas Department of Transportation, Archeological Studies Program, Environmental Affairs Division, Austin.

Perttula, T. K., B. Nelson, R. L. Cast, and B. Gonzalez

2010 *The Clements Site (41CS25): A Late 17th to Early 18th-Century Nasoni Caddo Settlement and Cemetery*. Anthropological Papers No. 92. American Museum of Natural History, New York.

Skinner, S. A., R. K. Harris, and K. M. Anderson (editors)

1969 *Archaeological Investigations at the Sam Kaufman Site, Red River County, Texas*. Contributions in Anthropology No. 5. Department of Anthropology, Southern Methodist University, Dallas.

Story, D. A.

1997 1968-1970 Archeological Investigations at the George C. Davis Site, Cherokee County, Texas. *Bulletin of the Texas Archeological Society* 68:1-113.

1998 The George C. Davis Site: Glimpses into Early Caddoan Symbolism and Ideology. In *The Native History of the Caddo: Their Place in Southeastern Archeology and Ethnohistory*, edited by T. K. Perttula and J. E. Bruseth, pp. 9-43. Studies in Archeology 30. Texas Archeological Research Laboratory, The University of Texas at Austin.

Thurmond, J. P.

1990 *Archeology of the Cypress Creek Drainage Basin, Northeastern Texas and Northwestern Louisiana*. Studies in Archeology 5. Texas Archeological Research Laboratory, The University of Texas at Austin.