



INDEX OF TEXAS ARCHAEOLOGY

Open Access Gray Literature from the Lone Star State

Volume 2014

Article 68

2014

Documentation of Cemeteries and Funerary Offerings from Sites in the Upper Neches River Basin, Anderson, Cherokee, and Smith Counties, Texas

Timothy K. Perttula

Heritage Research Center, Stephen F. Austin State University

Bo Nelson

Robert Z. Selden Jr.

Heritage Research Center, Stephen F. Austin State University

Follow this and additional works at: <https://scholarworks.sfasu.edu/ita>



Part of the [American Material Culture Commons](#), [Archaeological Anthropology Commons](#), [Environmental Studies Commons](#), [Other American Studies Commons](#), [Other Arts and Humanities Commons](#), [Other History of Art, Architecture, and Archaeology Commons](#), and the [United States History Commons](#)

Tell us how this article helped you.

This Article is brought to you for free and open access by the Center for Regional Heritage Research at SFA ScholarWorks. It has been accepted for inclusion in Index of Texas Archaeology: Open Access Gray Literature from the Lone Star State by an authorized editor of SFA ScholarWorks. For more information, please contact cdsscholarworks@sfasu.edu.

Documentation of Cemeteries and Funerary Offerings from Sites in the Upper Neches River Basin, Anderson, Cherokee, and Smith Counties, Texas

Creative Commons License



This work is licensed under a [Creative Commons Attribution-NonCommercial 4.0 International License](https://creativecommons.org/licenses/by-nc/4.0/)

**Documentation of Cemeteries and Funerary Offerings
from Sites in the Upper Neches River Basin, Anderson,
Cherokee, and Smith Counties, Texas**

Timothy K. Perttula, Bo Nelson, and Robert Z. Selden, Jr.

Special Publication No. 26

Friends of Northeast Texas Archaeology

2014

Editor, Timothy K. Perttula
10101 Woodhaven Dr.
Austin, Texas 78753
tkp4747@aol.com

Distribution, Bo Nelson,
344 CR 4154
Pittsburg, Texas 75686
RBoNelson@aol.com

Cover art: Patton Engraved, *var. Allen* carinated bowl, Burial 3 at the Vanderpool site
(41SM77).

Copyright, Friends of Northeast Texas Archaeology
Pittsburg and Austin

Table of Contents

List of Figures

Acknowledgments

List of Authors

Introduction

Vanderpool Site (41SM77)

 Burial 1

 Burial 3

 Ceramic Pipe

 Glass Beads

 Arrow point

 Burial 4

 Burial 5

Saline Creek Site

Pipe Site (41AN67)

The Byars Ranch Site in Smith County, Texas

Upper Neches Vessel Series

Summary and Conclusions

References Cited

List of Figures

Figure 1. Location of the Vanderpool site (41SM77) on Saline Creek, Smith County, in East Texas.

Figure 2. Plain bowl from Burial 1 at the Vanderpool site.

Figure 3. Burial 3 at the Vanderpool site.

Figure 4. Hume Engraved, *var. Hume* bottle from Burial 3 at the Vanderpool site.

Figure 5. Engraved bottle (FIN S4) from Burial 3 at the Vanderpool site.

Figure 6. cf. Poynor Engraved, *var. Blackburn* jar (FIN S5), Burial 3 at the Vanderpool site.

Figure 7. cf. Poynor Engraved, *var. Blackburn* jar (FIN S6), Burial 3 at the Vanderpool site.

Figure 8. Hood Engraved, *var. Hood* effigy bowl, Burial 3 at the Vanderpool site.

Figure 9. Fragmentary Bullard Brushed jar from Burial 3 at the Vanderpool site.

Figure 10. Patton Engraved, *var. Allen* carinated bowl, Burial 3 at the Vanderpool site.

Figure 11. Poynor Engraved, *var. Hood* carinated bowl, Burial 3 at the Vanderpool site.

Figure 12. Poynor Engraved, *Var. E* carinated bowl, Burial 3 at the Vanderpool site.

Figure 13. Punctated-brushed jar from Burial 3 at the Vanderpool site.

Figure 14. Patton Engraved, *var. unspecified* bowl from Burial 3 at the Vanderpool site.

Figure 15. Bullard Brushed jar, Burial 3 at the Vanderpool site.

Figure 16. Poynor Engraved, *Var. E* carinated bowl (FIN S16), Burial 3 at the Vanderpool site.

Figure 17. Elbow pipe in Burial 3 at the Vanderpool site.

Figure 18. Glass beads from Burial 3 at the Vanderpool site.

Figure 19. Straight-stemmed arrow point from Burial 3 at the Vanderpool site.

Figure 20. Engraved bottle from Burial 4 at the Vanderpool site.

List of Figures, cont.

- Figure 21. Poynor Brushed carinated bowl, Burial 4 at the Vanderpool site.
- Figure 22. Poynor Engraved, *var. Freeman* carinated bowl from Burial 4 at the Vanderpool site.
- Figure 23. cf. Poynor Engraved, *Var. I* carinated bowl from Burial 4 at the Vanderpool site.
- Figure 24. cf. Poynor Engraved, *Var. S* bottle from Burial 4 at the Vanderpool site.
- Figure 25. Poynor Engraved, *var. Hood* carinated bowl, Burial 4 at the Vanderpool site.
- Figure 26. Poynor Engraved, *var. Hood* carinated bowl from Burial 4 at the Vanderpool site.
- Figure 27. Appliqued-pinched jar, Burial 4 at the Vanderpool site.
- Figure 28. Plain bowl, Burial 4 at the Vanderpool site.
- Figure 29. Poynor Engraved, *var. Hood* jar, Burial 4 at the Vanderpool site.
- Figure 30. Brushed-incised jar from Burial 4 at the Vanderpool site.
- Figure 31. Burial 5 at the Vanderpool site.
- Figure 32. Sherds from Poynor Engraved, *Var. S* bottle, Burial 5 at the Vanderpool site.
- Figure 33. Poynor Engraved, cf. *Var. D* carinated bowl from Burial 5 at the Vanderpool site.
- Figure 34. Conjoined Poynor Engraved, *var. Cook* carinated bowls, Burial 5 at the Vanderpool site.
- Figure 35. Hood Engraved, *var. Hood* effigy bowl from Burial 5 at the Vanderpool site.
- Figure 36. Tool punctated jar, Burial 5 at the Vanderpool site.
- Figure 37. Poynor Engraved, *var. Cook* carinated bowl from Burial 5 at the Vanderpool site.
- Figure 38. Location of Burials 1 and at the Saline Creek site, Smith County, Texas.
- Figure 39. Drawing of Burial 1 at the Saline Creek site.

List of Figures, cont.

Figure 40. Drawing of Burial 2 at the Saline Creek site.

Figure 41. Map of the Pipe site redrawn from a Buddy Jones map on file at the Gregg County Historical Museum.

Figure 42. Poynor Engraved bottle from Burial 2 at the Pipe site (41AN67).

Figure 43. cf. Hume Pinched bottle from the Byars Ranch site.

Figure 44. Poynor Engraved, *var. Hood* carinated bowl.

Figure 45. Poynor Engraved, *var. unspecified* carinated bowl.

Figure 46. Bullard Brushed jar.

Figure 47. Brushed-appliqued jar.

Figure 48. Poynor Engraved bottle.

Figure 49. Plain bowl.

Figure 50. Incised-brushed bowl.

Figure 51. Hood Engraved, *var. Hood* effigy bowl.

Figure 52. Poynor Engraved, *var. Cook* carinated bowl.

Figure 53. Poynor Engraved, cf. *Var. S* bowl or cup.

Figure 54. Poynor Engraved, *var. Hood* carinated bowl.

Acknowledgments

We wish to thank Patti Haskins of the Gregg County Historical Museum for all her help with the logistics of this documentation effort, and to her and Clayton Haskins for their hospitality.

Bo Nelson took all the photographs in this publication, and Lance Trask prepared the many excellent figures and maps.

List of Authors

Bo Nelson

Timothy K. Perttula

Robert Z. Selden, Jr.

Introduction

This publication concerns the documentation of ceramic vessels, a ceramic pipe, a stemmed arrow point, and glass beads from several post-A.D. 1400 ancestral Caddo sites in the upper Neches River basin in Smith, Anderson, and Cherokee counties, Texas. Two of the sites have been recorded and have state of Texas trinomial numbers: Vanderpool (41SM77) on Saline Creek and Pipe (41AN67) along the Neches River, but the other sites (one also on Saline Creek) and collections have not been.

These artifacts were recovered from a series of burials excavated and recorded by Buddy Calvin Jones at the sites in 1956 and 1960. In the case of the Byars site in Smith County, it is not known when it was investigated by Jones. Notes on the excavations and funerary offerings are curated by the Gregg County Historical Museum.

Vanderpool Site (41SM77)

The Vanderpool site, also referred to by Jones as the FIN site in Smith County, is on Saline Creek in the Neches River basin in the southwestern part of the county, in the western part of the East Texas Pineywoods (Figure 1). It is known that a Mr. Wallace and a Mr. Vanderpool excavated two burials at the site in 1957 (Johnson 1961:224), and both these individuals dug at the Saline Creek site in 1956 with Jones (see below). Johnson (1961) noted that the two burials had contained an unspecified number of Frankston phase (ca. A.D. 1400-1650) ceramic vessels, 14 Perdiz arrow points, a celt, and one large chipped stone knife.

According to Jones' notes, a total of five burials were excavated at the Vanderpool site (Burials 1-5). However, his notes only concern Burials 1, 3-5, and even these notes are not extensive. Burials 3 and 4 were oriented east-west and were close together, and Burial 5 was more than 30 m to the south. His notes for Burial 3 indicate that the deceased Caddo individual was placed in a grave that was 76 cm in depth, 107 cm in width, and 203 cm in length. The burial fill was a lightly-colored sandy soil, indicating that Burial 3 had not been placed in a midden deposit.

Jones burial pottery catalogue for the Vanderpool site lists a total of 34 ceramic vessels in four of the burials: two ceramic vessels as associated funerary offerings in Burial 1, 14 ceramic vessels in Burial 3, 12 vessels in Burial 4, and six ceramic vessels in Burial 5. This is a mean of 8.5 ceramic vessels per burial in the cemetery.

Burial 1

There is one ceramic vessel in the Vanderpool site collections from Burial 1, although Jones' burial pottery catalogue lists two (SC 1 and SC 2):

VESSEL NO.: 2003.08.223 (FIN SC 2)

NON-PLASTICS AND PASTE: grog and bone

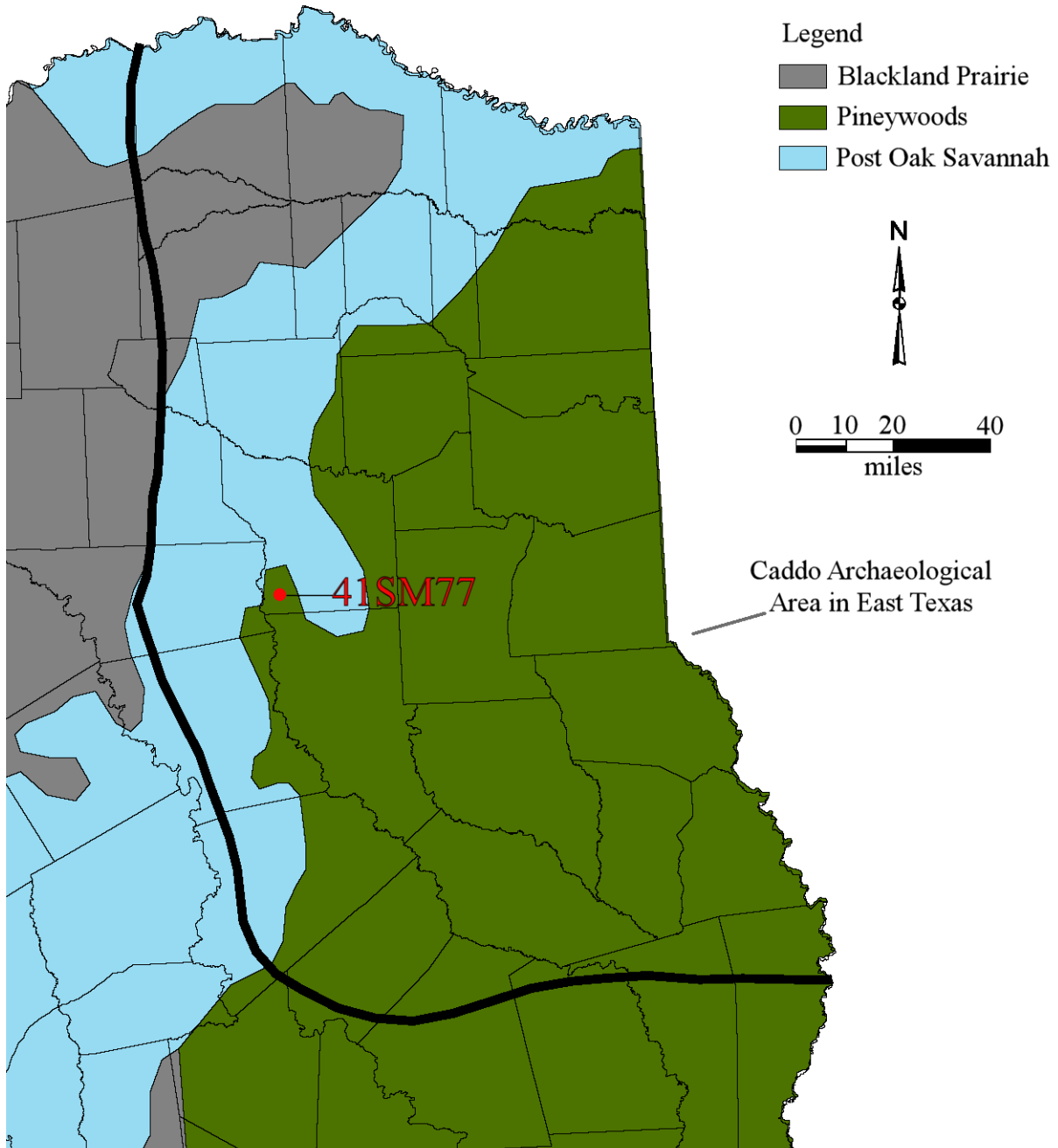


Figure 1. Location of the Vanderpool site (41SM77) on Saline Creek, Smith County, in East Texas.

VESSEL FORM: Bowl with four rim peaks

RIM AND LIP FORM: Direct rim and rounded lip

CORE COLOR: F (fired in a reducing environment and cooled in the open air)

INTERIOR SURFACE COLOR: reddish-brown

EXTERIOR SURFACE COLOR: reddish-brown; fire clouds on the body and base; organic residue on the body

WALL THICKNESS (RIM, BODY, AND BASE IN MM): rim, 6.7 mm; base, 11.0 mm

INTERIOR SURFACE TREATMENT: smoothed

EXTERIOR SURFACE TREATMENT: burnished

HEIGHT (IN CM): 8.7; 9.7 cm atop the rim peaks

ORIFICE DIAMETER (IN CM): 16.9

DIAMETER AT BOTTOM OF RIM OR NECK (IN CM): N/A

BASE DIAMETER (IN CM) AND SHAPE OF BASE: 7.4; circular and flat

ESTIMATED VOLUME (IN LITERS): 0.59

DECORATION (INCLUDING MOTIF AND ELEMENTS WHEN APPARENT): Plain (Figure 2)

PIGMENT USE AND LOCATION ON VESSEL: none

TYPE AND VARIETY [IF KNOWN]: Unidentified plain ware



Figure 2. Plain bowl from Burial 1 at the Vanderpool site.

Burial 3

Burial 3 is that of an adult placed in an extended supine position with its head at the eastern end of the grave, and facing west (Figure 3). The many vessels in the grave were apparently placed in rows along both side of the body, from the head down to the feet. Two distinctive engraved jars (FIN S5 and S6) were by the head and the left shoulder, while two bottles were placed by the right shoulder. A mixture of bowls and jars were along what would have been the body mid-section and the legs. The locations of the glass beads, ceramic pipe, and arrow point within the grave pit are not known, as they were not depicted on Jones' burial drawing (see Figure 3).

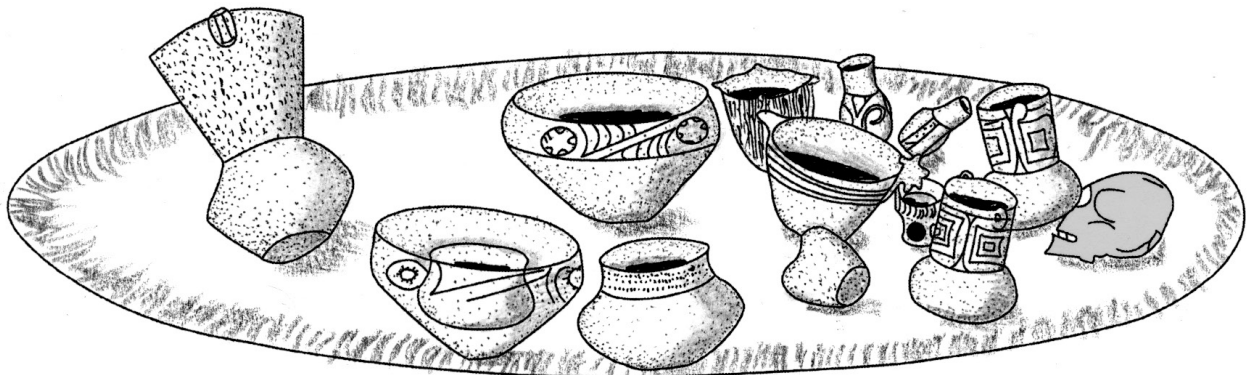


Figure 3. Burial 3 at the Vanderpool site.

Thirteen of the 14 ceramic vessels that had been placed in Burial 3 are in the Vanderpool site collections at the Gregg County Historical Museum. The one missing vessel is FIN S8, which is described in Jones' burial pottery catalogue as a "quadrapod pot."

VESSEL NO.: 2003.08.268 (FIN S3)

NON-PLASTICS AND PASTE: bone

VESSEL FORM: Bottle

RIM AND LIP FORM: Direct rim and rounded lip

CORE COLOR: A (fired and cooled in an oxidizing environment)

INTERIOR SURFACE COLOR: reddish-brown

EXTERIOR SURFACE COLOR: reddish-brown

WALL THICKNESS (RIM, BODY, AND BASE IN MM): rim, 4.1 mm

INTERIOR SURFACE TREATMENT: none

EXTERIOR SURFACE TREATMENT: smoothed

HEIGHT (IN CM): 12.3

ORIFICE DIAMETER (IN CM): 3.3

DIAMETER AT BOTTOM OF RIM OR NECK (IN CM): 5.3

BASE DIAMETER (IN CM) AND SHAPE OF BASE: 5.1; circular and flat

ESTIMATED VOLUME (IN LITERS): 0.26

DECORATION (INCLUDING MOTIF AND ELEMENTS WHEN APPARENT): The vessel body has seven narrow vertical panels filled with cross-hatched engraved lines. The panels extend from the base of the bottle neck to just above the base, where there is a single horizontal engraved line (Figure 4).

PIGMENT USE AND LOCATION ON VESSEL: none

TYPE AND VARIETY [IF KNOWN]: Hume Engraved, *var. Hume*

VESSEL NO.: 2003.08.1828 (FIN S4)

NON-PLASTICS AND PASTE: grog

VESSEL FORM: Bottle

RIM AND LIP FORM: Direct rim and a flat lip

CORE COLOR: A (fired and cooled in an oxidizing environment)

INTERIOR SURFACE COLOR: yellowish-brown

EXTERIOR SURFACE COLOR: yellowish-brown; fire clouds on the body and base

WALL THICKNESS (RIM, BODY, AND BASE IN MM): rim, 6.3 mm

INTERIOR SURFACE TREATMENT: none

EXTERIOR SURFACE TREATMENT: burnished

HEIGHT (IN CM): 16.2



Figure 4. Hume Engraved, var. Hume bottle from Burial 3 at the Vanderpool site.

ORIFICE DIAMETER (IN CM): 4.4

DIAMETER AT BOTTOM OF RIM OR NECK (IN CM): 5.9; maximum width on the body is 9.6 cm

BASE DIAMETER (IN CM) AND SHAPE OF BASE: 7.2; circular and flat

ESTIMATED VOLUME (IN LITERS): 0.46

DECORATION (INCLUDING MOTIF AND ELEMENTS WHEN APPARENT): The engraved motif on the vessel body is delimited by two sets of upper and lower horizontal engraved lines. The two body panels have hooked arm elements and a slanted scroll, along with hatched triangular elements, with the scroll fill zones filled with negative ovals defined by hatched and cross-hatched areas (Figure 5).

PIGMENT USE AND LOCATION ON VESSEL: none

TYPE AND VARIETY [IF KNOWN]: Unidentified fine ware

VESSEL NO.: 2003.08.363 (FIN S5)

NON-PLASTICS AND PASTE: grog and hematite

VESSEL FORM: Jar with two loop handles (28 x 14 mm in length and width) (Figure 6)

RIM AND LIP FORM: Direct rim and rounded lip

CORE COLOR: A (fired and cooled in an oxidizing environment)

INTERIOR SURFACE COLOR: yellowish-brown; fire clouds on the body and base

EXTERIOR SURFACE COLOR: yellowish-brown; fire clouds on the body and base

WALL THICKNESS (RIM, BODY, AND BASE IN MM): rim, 5.6 mm

INTERIOR SURFACE TREATMENT: smoothed

EXTERIOR SURFACE TREATMENT: burnished

HEIGHT (IN CM): 13.7

ORIFICE DIAMETER (IN CM): 10.4

DIAMETER AT BOTTOM OF RIM OR NECK (IN CM): 10.5

BASE DIAMETER (IN CM) AND SHAPE OF BASE: 7.8; circular and flat



Figure 5. Engraved bottle (FIN S4) from Burial 3 at the Vanderpool site.

ESTIMATED VOLUME (IN LITERS): 0.85

DECORATION (INCLUDING MOTIF AND ELEMENTS WHEN APPARENT): The tall rim has four engraved rectangular panels divided by vertical brackets; there are small hatched

triangles at the top and bottom of each bracket. Within each of the panels are two interior sets of engraved rectangles (Figure 6).

PIGMENT USE AND LOCATION ON VESSEL: white pigment in the engraved lines

TYPE AND VARIETY [IF KNOWN]: cf. Poynor Engraved, *var. Blackburn*

VESSEL NO.: 2003.08.0003 (FIN S6)

NON-PLASTICS AND PASTE: bone



Figure 6. cf. Poynor Engraved, *var. Blackburn* jar (FIN S5), Burial 3 at the Vanderpool site.

VESSEL FORM: Jar with two loop handles (24 x 9 mm in length and width) (Figure 7)

RIM AND LIP FORM: Direct rim and rounded lip

CORE COLOR: F (fired in a reducing environment and cooled in the open air)

INTERIOR SURFACE COLOR: dark yellowish-brown; fire clouds on the rim, body, and base

EXTERIOR SURFACE COLOR: dark yellowish-brown; fire clouds on the rim, body, and base



Figure 7. cf. Poynor Engraved, var. Blackburn jar (FIN S6), Burial 3 at the Vanderpool site.

WALL THICKNESS (RIM, BODY, AND BASE IN MM): rim, 5.6 mm

INTERIOR SURFACE TREATMENT: smoothed

EXTERIOR SURFACE TREATMENT: burnished

HEIGHT (IN CM): 14.9

ORIFICE DIAMETER (IN CM): 11.0

DIAMETER AT BOTTOM OF RIM OR NECK (IN CM): 10.8

BASE DIAMETER (IN CM) AND SHAPE OF BASE: 7.1; circular and rounded

ESTIMATED VOLUME (IN LITERS): 0.98

DECORATION (INCLUDING MOTIF AND ELEMENTS WHEN APPARENT): The tall rim has four engraved rectangular panels divided by vertical brackets; there are small excised triangles on either side of the divider at the top and bottom of each bracket. Within each of the panels are three interior sets of engraved rectangles (Figure 7). The decoration on this jar is virtually identical to that on FIN S5 (see Figure 6).

PIGMENT USE AND LOCATION ON VESSEL: red pigment in the engraved lines

TYPE AND VARIETY [IF KNOWN]: cf. Poynor Engraved, *var. Blackburn*

VESSEL NO.: 2003.08.0004 (FIN S7)

NON-PLASTICS AND PASTE: grog

VESSEL FORM: Bowl with bird effigy head (7.6 x 1.0 cm in height and width) and tab tail (5.0 x 3.0 cm) (Figure 8)

RIM AND LIP FORM: Direct rim and rounded lip

CORE COLOR: F (fired in a reducing environment and cooled in the open air)

INTERIOR SURFACE COLOR: light yellowish-brown; fire clouds on the rim, body, and base

EXTERIOR SURFACE COLOR: brown; fire clouds on the rim, body, and base

WALL THICKNESS (RIM, BODY, AND BASE IN MM): rim, 6.2 mm

INTERIOR SURFACE TREATMENT: burnished



Figure 8. Hood Engraved, var. Hood effigy bowl, Burial 3 at the Vanderpool site.

EXTERIOR SURFACE TREATMENT: burnished

HEIGHT (IN CM): 10.8; 13.3 cm at the top of the effigy head

ORIFICE DIAMETER (IN CM): 18.4

DIAMETER AT BOTTOM OF RIM OR NECK (IN CM): N/A

BASE DIAMETER (IN CM) AND SHAPE OF BASE: 10.9; circular and flat

ESTIMATED VOLUME (IN LITERS): 0.80

DECORATION (INCLUDING MOTIF AND ELEMENTS WHEN APPARENT): The vessel has three sets of horizontal engraved lines that encircle the rim (Figure 8), except under the effigy head and tab tail.

PIGMENT USE AND LOCATION ON VESSEL: none

TYPE AND VARIETY [IF KNOWN]: Hood Engraved, *var. Hood*

VESSEL NO.: 2003.08.579 (FIN S9)

NON-PLASTICS AND PASTE: bone

VESSEL FORM: Jar

RIM AND LIP FORM: N/A

CORE COLOR: F (fired in a reducing environment and cooled in the open air)

INTERIOR SURFACE COLOR: reddish-brown

EXTERIOR SURFACE COLOR: brown

WALL THICKNESS (RIM, BODY, AND BASE IN MM): body, 7.1 mm

INTERIOR SURFACE TREATMENT: none

EXTERIOR SURFACE TREATMENT: none

HEIGHT (IN CM): 9.5+

ORIFICE DIAMETER (IN CM): 12.7

DIAMETER AT BOTTOM OF RIM OR NECK (IN CM): N/A

BASE DIAMETER (IN CM) AND SHAPE OF BASE: 5.7; circular and flat

ESTIMATED VOLUME (IN LITERS): 0.72+

DECORATION (INCLUDING MOTIF AND ELEMENTS WHEN APPARENT): The vessel has vertical brushing on the body (Figure 9).

PIGMENT USE AND LOCATION ON VESSEL: none

TYPE AND VARIETY [IF KNOWN]: Bullard Brushed

VESSEL NO.: 2003.08.0018 (FIN S10)

NON-PLASTICS AND PASTE: grog

VESSEL FORM: Carinated bowl

RIM AND LIP FORM: Direct rim and a rounded lip

CORE COLOR: A (fired and cooled in an oxidizing environment)

INTERIOR SURFACE COLOR: dark reddish-brown; fire clouds on the body



Figure 9. Fragmentary Bullard Brushed jar from Burial 3 at the Vanderpool site.

EXTERIOR SURFACE COLOR: dark reddish-brown; fire clouds on the rim, body, and base

WALL THICKNESS (RIM, BODY, AND BASE IN MM): rim, 4.6 mm

INTERIOR SURFACE TREATMENT: burnished

EXTERIOR SURFACE TREATMENT: burnished

HEIGHT (IN CM): 13.6

ORIFICE DIAMETER (IN CM): 17.2

DIAMETER AT BOTTOM OF RIM OR NECK (IN CM): 17.1

BASE DIAMETER (IN CM) AND SHAPE OF BASE: 8.2; circular and flat

ESTIMATED VOLUME (IN LITERS): 2.1

DECORATION (INCLUDING MOTIF AND ELEMENTS WHEN APPARENT): The rim

has three regularly spaced horizontal engraved lines with hatched triangular tick marks. The middle horizontal engraved lines has two sets of hatched triangles, with apexes pointing either towards the rim or the carination (Figure 10).

PIGMENT USE AND LOCATION ON VESSEL: none

TYPE AND VARIETY [IF KNOWN]: Patton Engraved, *var. Allen*

VESSEL NO.: 2003.08.272 (FIN S11)

NON-PLASTICS AND PASTE: grog and hematite

VESSEL FORM: Globular carinated bowl

RIM AND LIP FORM: Everted rim and a rounded lip

CORE COLOR: A (fired and cooled in an oxidizing environment)

INTERIOR SURFACE COLOR: dark yellowish-brown



Figure 10. Patton Engraved, *var. Allen* carinated bowl, Burial 3 at the Vanderpool site.

EXTERIOR SURFACE COLOR: dark yellowish-brown; organic residue on rim and body

WALL THICKNESS (RIM, BODY, AND BASE IN MM): rim, 5.8 mm

INTERIOR SURFACE TREATMENT: burnished on the rim, smoothed on the body

EXTERIOR SURFACE TREATMENT: burnished

HEIGHT (IN CM): 12.6

ORIFICE DIAMETER (IN CM): 15.9

DIAMETER AT BOTTOM OF RIM OR NECK (IN CM): 15.7

BASE DIAMETER (IN CM) AND SHAPE OF BASE: 8.3; flat and circular

ESTIMATED VOLUME (IN LITERS): 1.2

DECORATION (INCLUDING MOTIF AND ELEMENTS WHEN APPARENT): The rim is divided into eight oval-shaped panels by vertical excised brackets. The top and bottom of the panel is marked by single horizontal engraved lines (Figure 11).

PIGMENT USE AND LOCATION ON VESSEL: none

TYPE AND VARIETY [IF KNOWN]: Poynor Engraved, *var. Hood*

VESSEL NO.: 2003.08.350 (FIN 12)

NON-PLASTICS AND PASTE: grog and hematite

VESSEL FORM: Carinated bowl

RIM AND LIP FORM: Inverted rim and rounded lip

CORE COLOR: F (fired in a reducing environment and cooled in the open air)

INTERIOR SURFACE COLOR: dark yellowish-brown; fire clouds and organic residue on the rim and body

EXTERIOR SURFACE COLOR: dark yellowish-brown; fire clouds on the rim and body

WALL THICKNESS (RIM, BODY, AND BASE IN MM): rim, 6.7 mm

INTERIOR SURFACE TREATMENT: smoothed



Figure 11. Poynor Engraved, var. Hood carinated bowl, Burial 3 at the Vanderpool site.

EXTERIOR SURFACE TREATMENT: burnished

HEIGHT (IN CM): 15.9

ORIFICE DIAMETER (IN CM): 27.5

DIAMETER AT BOTTOM OF RIM OR NECK (IN CM): 28.0

BASE DIAMETER (IN CM) AND SHAPE OF BASE: 10.0; flat and circular

ESTIMATED VOLUME (IN LITERS): 4.0

DECORATION (INCLUDING MOTIF AND ELEMENTS WHEN APPARENT): The rim panel has an engraved slanted scroll and circle motif repeated four times around the vessel. The central circle element has a small inner circle with excised triangular-shaped rays. The upper and lower scroll fill zones are open (Figure 12).

PIGMENT USE AND LOCATION ON VESSEL: none

TYPE AND VARIETY [IF KNOWN]: Poynor Engraved, *Var. E* (see Perttula 2011b)



Figure 12. Poynor Engraved, Var. E carinated bowl, Burial 3 at the Vanderpool site.

VESSEL NO.: 2003.08.0002 (FIN S13)

NON-PLASTICS AND PASTE: grog

VESSEL FORM: Jar with a tall rim, and two strap handles (32 x 20 mm in length and width) and a carinated body (Figure 13)

RIM AND LIP FORM: Everted rim and a rounded lip

CORE COLOR: F (fired in a reducing environment and cooled in the open air)

INTERIOR SURFACE COLOR: dark reddish-brown; fire clouds on the rim, body, and base

EXTERIOR SURFACE COLOR: reddish-brown; fire clouds on the rim, body, and base

WALL THICKNESS (RIM, BODY, AND BASE IN MM): rim, 7.0 mm

INTERIOR SURFACE TREATMENT: smoothed

EXTERIOR SURFACE TREATMENT: none

HEIGHT (IN CM): 27.5



Figure 13. Punctated-brushed jar from Burial 3 at the Vanderpool site.

ORIFICE DIAMETER (IN CM): 22.9

DIAMETER AT BOTTOM OF RIM OR NECK (IN CM): 25.6

BASE DIAMETER (IN CM) AND SHAPE OF BASE: 10.0; circular and flat

ESTIMATED VOLUME (IN LITERS): 8.2

DECORATION (INCLUDING MOTIF AND ELEMENTS WHEN APPARENT): The vessel rim has 14 horizontal rows of tool punctations. The vessel body has horizontal brushing marks that extend to near the base (Figure 13).

PIGMENT USE AND LOCATION ON VESSEL: none

TYPE AND VARIETY [IF KNOWN]: Unidentified utility ware

VESSEL NO.: 2003.08.1005 (FIN S14)

NON-PLASTICS AND PASTE: grog

VESSEL FORM: Bowl

RIM AND LIP FORM: Direct rim and a rounded lip

CORE COLOR: B (fired and cooled in a reducing environment)

INTERIOR SURFACE COLOR: dark grayish-brown; fire clouds on the rim

EXTERIOR SURFACE COLOR: very dark grayish-brown; fire clouds and organic residue on the rim and body

WALL THICKNESS (RIM, BODY, AND BASE IN MM): rim, 8.2 mm

INTERIOR SURFACE TREATMENT: burnished

EXTERIOR SURFACE TREATMENT: smoothed

HEIGHT (IN CM): 8.0

ORIFICE DIAMETER (IN CM): 15.4

DIAMETER AT BOTTOM OF RIM OR NECK (IN CM): N/A

BASE DIAMETER (IN CM) AND SHAPE OF BASE: 9.2; circular and rounded

ESTIMATED VOLUME (IN LITERS): 0.49

DECORATION (INCLUDING MOTIF AND ELEMENTS WHEN APPARENT): The rim has four oval-shaped panels defined by opposing sets of three vertically arcing engraved lines. There are small hatched triangles at the top of each of the panels (Figure 14).



Figure 14. Patton Engraved, var. unspecified bowl from Burial 3 at the Vanderpool site.

PIGMENT USE AND LOCATION ON VESSEL: none

TYPE AND VARIETY [IF KNOWN]: Patton Engraved, var. *unspecified*

VESSEL NO.: 2003.08.0007 (FIN S15)

NON-PLASTICS AND PASTE: bone

VESSEL FORM: Jar with four lip lugs (Figure 15)

RIM AND LIP FORM: Direct rim and rounded lip

CORE COLOR: F (fired in a reducing environment and cooled in the open air)

INTERIOR SURFACE COLOR: reddish-brown

EXTERIOR SURFACE COLOR: dark reddish-brown; fire clouds and organic residue on the rim and body

WALL THICKNESS (RIM, BODY, AND BASE IN MM): rim, 6.0 mm

INTERIOR SURFACE TREATMENT: smoothed

EXTERIOR SURFACE TREATMENT: none

HEIGHT (IN CM): 14.0; 14.6 cm in height atop the lugs

ORIFICE DIAMETER (IN CM): 16.3

DIAMETER AT BOTTOM OF RIM OR NECK (IN CM): 14.0

BASE DIAMETER (IN CM) AND SHAPE OF BASE: 7.2; circular and flat

ESTIMATED VOLUME (IN LITERS): 1.4

DECORATION (INCLUDING MOTIF AND ELEMENTS WHEN APPARENT): There are vertical brushing marks from the rim to the vessel base (Figure 15).



Figure 15. Bullard Brushed jar, Burial 3 at the Vanderpool site.

PIGMENT USE AND LOCATION ON VESSEL: none

TYPE AND VARIETY [IF KNOWN]: Bullard Brushed

VESSEL NO.: 2003.08.0885 (FIN S16)

NON-PLASTICS AND PASTE: grog and hematite

VESSEL FORM: Carinated bowl

RIM AND LIP FORM: Inverted rim and rounded lip

CORE COLOR: H (fired in a reducing environment and cooled in the open air)

INTERIOR SURFACE COLOR: reddish-brown; fire clouds on the rim and body

EXTERIOR SURFACE COLOR: grayish-brown

WALL THICKNESS (RIM, BODY, AND BASE IN MM): rim, 8.1 mm; body, 8.6 mm

INTERIOR SURFACE TREATMENT: none

EXTERIOR SURFACE TREATMENT: smoothed

HEIGHT (IN CM): 20.3

ORIFICE DIAMETER (IN CM): 30.6

DIAMETER AT BOTTOM OF RIM OR NECK (IN CM): 31.2

BASE DIAMETER (IN CM) AND SHAPE OF BASE: 11.3; circular and flat

ESTIMATED VOLUME (IN LITERS): 5.6

DECORATION (INCLUDING MOTIF AND ELEMENTS WHEN APPARENT): The rim panel, as defined by single upper and lower horizontal engraved lines, has an engraved circle and slanting scroll motif repeated six times around the vessel. The central circle element has a smaller internal circle with a series of six hatched pendant triangles whose apexes point towards the center of this small circle. The upper and lower scroll fill zones have curvilinear engraved lines (Figure 16).

PIGMENT USE AND LOCATION ON VESSEL: red pigment in the engraved lines

TYPE AND VARIETY [IF KNOWN]: Poynor Engraved, *Var. E*



Figure 16. Poynor Engraved, Var. E carinated bowl (FIN S16), Burial 3 at the Vanderpool site.

Ceramic Pipe

A keeled ceramic elbow pipe (2003.08.120, SC 14/60) was also placed in Burial 3 as a funerary offering. The pipe is tempered with grog and has a sandy paste. It is 65.2 mm in length and 35.0 mm in width. The bowl is 14.1 mm in height, with a 35.8 mm orifice diameter. The exterior diameter of the stem is 28.7 mm, and it is 7.6 mm in thickness. The pipe stem is decorated with a series of hatched ovals and triangles (Figure 17). This form of decorated elbow pipe is previously undocumented in upper Neches River basin Caddo sites (see Perttula 2011b:Figure 6-23).

Glass Beads

A large number of small (less than 3 mm in diameter) drawn glass beads of European manufacture were among the Burial 3 funerary offerings. These include 782 white beads, 34 blue beads, and 48 red Cornaline d'Aleppo beads with dark gray interiors (Figure 18).

Arrow point

Also accompanying Burial 3 is a straight-stemmed arrow point made from a local heat-treated quartzite. The blade is lightly serrated, and the barbs are squared and prominent (Figure 19).



Figure 17. Elbow pipe in Burial 3 at the Vanderpool site.



Figure 18. Glass beads from Burial 3 at the Vanderpool site.



Figure 19. Straight-stemmed arrow point from Burial 3 at the Vanderpool site.

Burial 4

There is very little information available about Burial 4 in the Jones' notes. This essentially only includes a rough plan map showing its location parallel to Burial 3, with the same east-west orientation, and an accompanying sketch showing the placement of the 12 vessels in the grave. The vessels were placed along what would have been the right side of the body along the leg, in the body mid-section, and around the shoulders, and what would have been the left side of the head. The drawing does not indicate which vessel is which in the grave.

Eleven of the 12 ceramic vessels inventoried for Burial 4 in the Jones burial pottery catalogue remain in the Vanderpool site collection at the Gregg County Historical Museum. The one missing vessel is FIN S17, described as an effigy vessel.

VESSEL NO.: 2003.08.338 (FIN 18)

NON-PLASTICS AND PASTE: grog

VESSEL FORM: Bottle with a carinated body (Figure 20)

RIM AND LIP FORM: Direct rim and rounded lip

CORE COLOR: B (fired and cooled in a reducing environment)

INTERIOR SURFACE COLOR: dark brown

EXTERIOR SURFACE COLOR: dark brown; fire clouds on the lower neck, body, and base

WALL THICKNESS (RIM, BODY, AND BASE IN MM): rim, 6.1 mm

INTERIOR SURFACE TREATMENT: none

EXTERIOR SURFACE TREATMENT: burnished

HEIGHT (IN CM): 19.3

ORIFICE DIAMETER (IN CM): 4.8

DIAMETER AT BOTTOM OF RIM OR NECK (IN CM): 5.2; maximum body width of 15.2 cm

BASE DIAMETER (IN CM) AND SHAPE OF BASE: 7.0; flat and circular

ESTIMATED VOLUME (IN LITERS): 0.54

DECORATION (INCLUDING MOTIF AND ELEMENTS WHEN APPARENT): The lower neck of the bottle has a single horizontal engraved line with small open pendant triangles. The vessel body has oval-shaped areas repeated four times around the body; the ovals are on both sides of the body carination. Each oval has a central circle with crossed-lines and excised triangular ends; there is a single hatched triangle pendant to one side of this central circle element. To the sides and at the top and bottom of each oval are large triangle elements with negative ovals outlined by hatching at the corners of each triangle (Figure 20).

PIGMENT USE AND LOCATION ON VESSEL: none

TYPE AND VARIETY [IF KNOWN]: Unidentified fine ware

VESSEL NO.: 2003.08.752 (FIN S19)



Figure 20. Engraved bottle from Burial 4 at the Vanderpool site.

NON-PLASTICS AND PASTE: grog and hematite

VESSEL FORM: Carinated bowl

RIM AND LIP FORM: Inverted rim and rounded lip

CORE COLOR: F (fired in a reducing environment and cooled in the open air)

INTERIOR SURFACE COLOR: reddish-brown; fire clouds on the body and base

EXTERIOR SURFACE COLOR: reddish-brown to brown

WALL THICKNESS (RIM, BODY, AND BASE IN MM): rim, 6.7 mm

INTERIOR SURFACE TREATMENT: smoothed on the rim

EXTERIOR SURFACE TREATMENT: burnished

HEIGHT (IN CM): 16.3

ORIFICE DIAMETER (IN CM): 21.0

DIAMETER AT BOTTOM OF RIM OR NECK (IN CM): 22.0

BASE DIAMETER (IN CM) AND SHAPE OF BASE: 9.5; flat and circular

ESTIMATED VOLUME (IN LITERS): 3.1

DECORATION (INCLUDING MOTIF AND ELEMENTS WHEN APPARENT): The rim of the vessel is plain, but the body has vertical to diagonal brushing marks covering its surface (Figure 21).

PIGMENT USE AND LOCATION ON VESSEL: none

TYPE AND VARIETY [IF KNOWN]: Poynor Brushed

VESSEL NO.: 2003.08.445 (FIN S20)

NON-PLASTICS AND PASTE: bone and hematite

VESSEL FORM: Carinated bowl

RIM AND LIP FORM: Direct rim and rounded lip

CORE COLOR: F (fired in a reducing environment and cooled in the open air)

INTERIOR SURFACE COLOR: reddish-brown

EXTERIOR SURFACE COLOR: reddish-brown; fire clouds on the body and base

WALL THICKNESS (RIM, BODY, AND BASE IN MM): rim, 6.2 mm

INTERIOR SURFACE TREATMENT: burnished on the rim, otherwise smoothed



Figure 21. Poynor Brushed carinated bowl, Burial 4 at the Vanderpool site.

EXTERIOR SURFACE TREATMENT: burnished

HEIGHT (IN CM): 9.5

ORIFICE DIAMETER (IN CM): 15.4

DIAMETER AT BOTTOM OF RIM OR NECK (IN CM): 15.5

BASE DIAMETER (IN CM) AND SHAPE OF BASE: 7.6; circular and flat

ESTIMATED VOLUME (IN LITERS): 0.88

DECORATION (INCLUDING MOTIF AND ELEMENTS WHEN APPARENT): The rim panel is divided into six ovals by wide vertical hatched brackets, as well as by upper and lower single horizontal engraved lines. The upper and lower parts of each oval has small hatched or excised pendant triangles (Figure 22).

PIGMENT USE AND LOCATION ON VESSEL: white pigment rubbed in the engraved lines



Figure 22. Poynor Engraved, var. Freeman carinated bowl from Burial 4 at the Vanderpool site.

TYPE AND VARIETY [IF KNOWN]: Poynor Engraved, *var. Freeman*

VESSEL NO.: 2003.08.701 (FIN S21)

NON-PLASTICS AND PASTE: grog

VESSEL FORM: Carinated bowl

RIM AND LIP FORM: Direct rim and a rounded lip

CORE COLOR: A (fired and cooled in an oxidizing environment)

INTERIOR SURFACE COLOR: light yellowish-brown

EXTERIOR SURFACE COLOR: reddish-brown; fire cloud on the base

WALL THICKNESS (RIM, BODY, AND BASE IN MM): rim, 5.8 mm

INTERIOR SURFACE TREATMENT: smoothed on the rim

EXTERIOR SURFACE TREATMENT: burnished

HEIGHT (IN CM): 8.9

ORIFICE DIAMETER (IN CM): 19.7

DIAMETER AT BOTTOM OF RIM OR NECK (IN CM): 19.6

BASE DIAMETER (IN CM) AND SHAPE OF BASE: 7.6; circular and flat

ESTIMATED VOLUME (IN LITERS): 1.1

DECORATION (INCLUDING MOTIF AND ELEMENTS WHEN APPARENT): The rim panel has an engraved continuous scroll motif that is repeated four times around the vessel. The upper and lower scroll fill zones have a series of vertical engraved lines as well as small concentric oval elements at opposite ends of the fill zones (Figure 23).

PIGMENT USE AND LOCATION ON VESSEL: none

TYPE AND VARIETY [IF KNOWN]: cf. Poynor Engraved, *Var. I*

VESSEL NO.: 2003.08.1852 (FIN S22)

NON-PLASTICS AND PASTE: grog and hematite

VESSEL FORM: Bottle

RIM AND LIP FORM: N/A

CORE COLOR: B (fired and cooled in a reducing environment)

INTERIOR SURFACE COLOR: grayish-brown



Figure 23. cf. Poynor Engraved, *Var. I* carinated bowl from Burial 4 at the Vanderpool site.

EXTERIOR SURFACE COLOR: dark grayish-brown

WALL THICKNESS (RIM, BODY, AND BASE IN MM): body, 5.8 mm

INTERIOR SURFACE TREATMENT: none

EXTERIOR SURFACE TREATMENT: smoothed

HEIGHT (IN CM): N/A

ORIFICE DIAMETER (IN CM): N/A

DIAMETER AT BOTTOM OF RIM OR NECK (IN CM): maximum body diameter, 7.7 cm

BASE DIAMETER (IN CM) AND SHAPE OF BASE: 5.5; circular and flat

ESTIMATED VOLUME (IN LITERS): N/A

DECORATION (INCLUDING MOTIF AND ELEMENTS WHEN APPARENT): The vessel body has sets of engraved concentric ovals and inner circles repeated three times around the vessel (Figure 24).

PIGMENT USE AND LOCATION ON VESSEL: white pigment rubbed in the engraved lines

TYPE AND VARIETY [IF KNOWN]: cf. Poynor Engraved, *Var. S*

VESSEL NO.: 2003.08.788 (FIN S23)

NON-PLASTICS AND PASTE: grog-hematite-organics

VESSEL FORM: Carinated bowl

RIM AND LIP FORM: Direct rim and a rounded lip

CORE COLOR: F (fired in a reducing environment and cooled in the open air)

INTERIOR SURFACE COLOR: reddish-brown

EXTERIOR SURFACE COLOR: reddish-brown; fire clouds on the rim, body, and base

WALL THICKNESS (RIM, BODY, AND BASE IN MM): rim, 6.7 mm

INTERIOR SURFACE TREATMENT: burnished on the rim, otherwise smoothed



Figure 24. cf. Poynor Engraved, Var. S bottle from Burial 4 at the Vanderpool site.

EXTERIOR SURFACE TREATMENT: burnished

HEIGHT (IN CM): 12.7

ORIFICE DIAMETER (IN CM): 18.9

DIAMETER AT BOTTOM OF RIM OR NECK (IN CM): 18.6

BASE DIAMETER (IN CM) AND SHAPE OF BASE: 8.9; circular and flat

ESTIMATED VOLUME (IN LITERS): 2.1

DECORATION (INCLUDING MOTIF AND ELEMENTS WHEN APPARENT): The rim is divided into 11 oval-shaped panels by cross-hatched engraved vertical brackets and single upper and lower horizontal engraved lines (Figure 25).



Figure 25. Poynor Engraved, var. Hood carinated bowl, Burial 4 at the Vanderpool site.

PIGMENT USE AND LOCATION ON VESSEL: none

TYPE AND VARIETY [IF KNOWN]: Poynor Engraved, *var. Hood*

VESSEL NO.: 2003.08.0006 (FIN S24)

NON-PLASTICS AND PASTE: bone and hematite

VESSEL FORM: Carinated bowl

RIM AND LIP FORM: Direct rim and a flat lip

CORE COLOR: A (fired and cooled in an oxidizing environment)

INTERIOR SURFACE COLOR: yellowish-brown

EXTERIOR SURFACE COLOR: yellowish-brown

WALL THICKNESS (RIM, BODY, AND BASE IN MM): rim, 5.5 mm

INTERIOR SURFACE TREATMENT: burnished on the rim, otherwise smoothed

EXTERIOR SURFACE TREATMENT: burnished

HEIGHT (IN CM): 14.2

ORIFICE DIAMETER (IN CM): 19.2

DIAMETER AT BOTTOM OF RIM OR NECK (IN CM): 19.0

BASE DIAMETER (IN CM) AND SHAPE OF BASE: 10.2; circular and flat

ESTIMATED VOLUME (IN LITERS): 2.4

DECORATION (INCLUDING MOTIF AND ELEMENTS WHEN APPARENT): The rim is divided into six oval-shaped panels by engraved brackets filled with vertical arcing lines as well as single upper and lower horizontal engraved lines (Figure 26).

PIGMENT USE AND LOCATION ON VESSEL: none

TYPE AND VARIETY [IF KNOWN]: Poynor Engraved, *var. Hood*

VESSEL NO.: 2003.08.0881 (FIN S25)



Figure 26. Poynor Engraved, *var. Hood* carinated bowl from Burial 4 at the Vanderpool site.

NON-PLASTICS AND PASTE: grog

VESSEL FORM: Jar

RIM AND LIP FORM: Everted rim and rounded lip

CORE COLOR: F (fired in a reducing environment and cooled in the open air)

INTERIOR SURFACE COLOR: yellowish-brown; fire clouds on the rim and body

EXTERIOR SURFACE COLOR: yellowish-brown; fire clouds on the rim, body, and base; organic residue on the rim and body

WALL THICKNESS (RIM, BODY, AND BASE IN MM): rim, 7.1 mm

INTERIOR SURFACE TREATMENT: smoothed on the rim

EXTERIOR SURFACE TREATMENT: none

HEIGHT (IN CM): 15.8

ORIFICE DIAMETER (IN CM): 16.5

DIAMETER AT BOTTOM OF RIM OR NECK (IN CM): 14.3

BASE DIAMETER (IN CM) AND SHAPE OF BASE: 6.5; circular and flat

ESTIMATED VOLUME (IN LITERS): 1.6

DECORATION (INCLUDING MOTIF AND ELEMENTS WHEN APPARENT): The rim has three X-shaped applied lugs, each 23 mm in length. The vessel body has three widely-spaced vertical rows of pinching from the rim-body juncture to 2 cm above the base (Figure 27).

PIGMENT USE AND LOCATION ON VESSEL: none

TYPE AND VARIETY [IF KNOWN]: Unidentified utility ware

VESSEL NO.: 2003.08.654 (FIN S26)

NON-PLASTICS AND PASTE: grog and hematite

VESSEL FORM: Bowl

RIM AND LIP FORM: Direct rim and rounded lip



Figure 27. Applied-pinched jar, Burial 4 at the Vanderpool site.

INTERIOR SURFACE COLOR: yellowish-brown; fire clouds on the rim, body, and base

EXTERIOR SURFACE COLOR: yellowish-brown; fire clouds on the base

WALL THICKNESS (RIM, BODY, AND BASE IN MM): rim, 9.0 mm

INTERIOR SURFACE TREATMENT: smoothed

EXTERIOR SURFACE TREATMENT: smoothed

HEIGHT (IN CM): 17.7

ORIFICE DIAMETER (IN CM): 31.2

DIAMETER AT BOTTOM OF RIM OR NECK (IN CM): N/A

BASE DIAMETER (IN CM) AND SHAPE OF BASE: 9.5; circular and flat

ESTIMATED VOLUME (IN LITERS): 4.4

DECORATION (INCLUDING MOTIF AND ELEMENTS WHEN APPARENT): Plain
(Figure 28)

PIGMENT USE AND LOCATION ON VESSEL: none

TYPE AND VARIETY [IF KNOWN]: Unidentified plain ware

VESSEL NO.: 2003.08.1794 (FIN S27)

NON-PLASTICS AND PASTE: grog and hematite

VESSEL FORM: Jar



Figure 28. Plain bowl, Burial 4 at the Vanderpool site.

RIM AND LIP FORM: Everted rim and a rounded lip

CORE COLOR: F (fired in a reducing environment and cooled in the open air)

INTERIOR SURFACE COLOR: reddish-brown; fire clouds on the rim and base

EXTERIOR SURFACE COLOR: reddish-brown; fire clouds on the rim; organic residue on the rim and body

WALL THICKNESS (RIM, BODY, AND BASE IN MM): rim, 6.5 mm

INTERIOR SURFACE TREATMENT: smoothed on the rim

EXTERIOR SURFACE TREATMENT: burnished

HEIGHT (IN CM): 11.5

ORIFICE DIAMETER (IN CM): 16.5

DIAMETER AT BOTTOM OF RIM OR NECK (IN CM): 15.6

BASE DIAMETER (IN CM) AND SHAPE OF BASE: 7.5; circular and flat

ESTIMATED VOLUME (IN LITERS): 1.1

DECORATION (INCLUDING MOTIF AND ELEMENTS WHEN APPARENT): The rim is divided into six panels by sets of vertically arcing engraved brackets and single upper and lower horizontal engraved lines (Figure 29).

PIGMENT USE AND LOCATION ON VESSEL: none

TYPE AND VARIETY [IF KNOWN]: Poynor Engraved, *var. Hood*

VESSEL NO.: 2003.08.317 (FIN S28)

NON-PLASTICS AND PASTE: grog and hematite

VESSEL FORM: Jar

RIM AND LIP FORM: Everted rim and rounded lip

CORE COLOR: F (fired in a reducing environment and cooled in the open air)

INTERIOR SURFACE COLOR: light reddish-brown; fire clouds on the body and base



Figure 29. Poynor Engraved, var. Hood jar, Burial 4 at the Vanderpool site.

EXTERIOR SURFACE COLOR: light reddish-brown; fire clouds on the rim, body, and base; organic residue on the rim

WALL THICKNESS (RIM, BODY, AND BASE IN MM): rim, 7.6 mm; body, 6.9 mm

INTERIOR SURFACE TREATMENT: smoothed

EXTERIOR SURFACE TREATMENT: none

HEIGHT (IN CM): 22.0

ORIFICE DIAMETER (IN CM): 21.0

DIAMETER AT BOTTOM OF RIM OR NECK (IN CM): 20.0

BASE DIAMETER (IN CM) AND SHAPE OF BASE: 7.5; circular and flat

ESTIMATED VOLUME (IN LITERS): 4.2

DECORATION (INCLUDING MOTIF AND ELEMENTS WHEN APPARENT):

PIGMENT USE AND LOCATION ON VESSEL: The rim has horizontal brushing marks over which 11 incised nested triangle elements have been superimposed. The vessel body has diagonal brushing marks from the rim-body juncture to the base (Figure 30).

TYPE AND VARIETY [IF KNOWN]: Unidentified utility ware

Burial 5

Burial 5 was that of an adult individual placed on their back in an extended supine position, likely facing west (Figure 31), with the pit extending into the red clay B-horizon; portions of the cranium and long bones were preserved in the grave. There were six ceramic vessels placed in the grave as funerary offerings, most along the right side of the body from the head to the lower right foot, and one large carinated bowl had been placed by the left foot. Other funerary offerings included in Burial 5—although not identified in the Gregg County Historical Museum collections from the Vanderpool site—include a large chipped biface by the upper left arm, and two Perdiz arrow points (Figure 31).

VESSEL NO.: 2003.08.757 (FIN S29)

NON-PLASTICS AND PASTE: grog and hematite

VESSEL FORM: Bottle

RIM AND LIP FORM: Direct rim and a flat lip

CORE COLOR: F (fired in a reducing environment and cooled in the open air)

INTERIOR SURFACE COLOR: dark yellowish-brown

EXTERIOR SURFACE COLOR: dark yellowish-brown; fire clouds on the body

WALL THICKNESS (RIM, BODY, AND BASE IN MM): rim, 6.4 mm; body, 6.6 mm; base, 8.4 mm

INTERIOR SURFACE TREATMENT: none

EXTERIOR SURFACE TREATMENT: smoothed

HEIGHT (IN CM): N/A

ORIFICE DIAMETER (IN CM): 5.0

DIAMETER AT BOTTOM OF RIM OR NECK (IN CM): N/A



Figure 30. Brushed-incised jar from Burial 4 at the Vanderpool site.

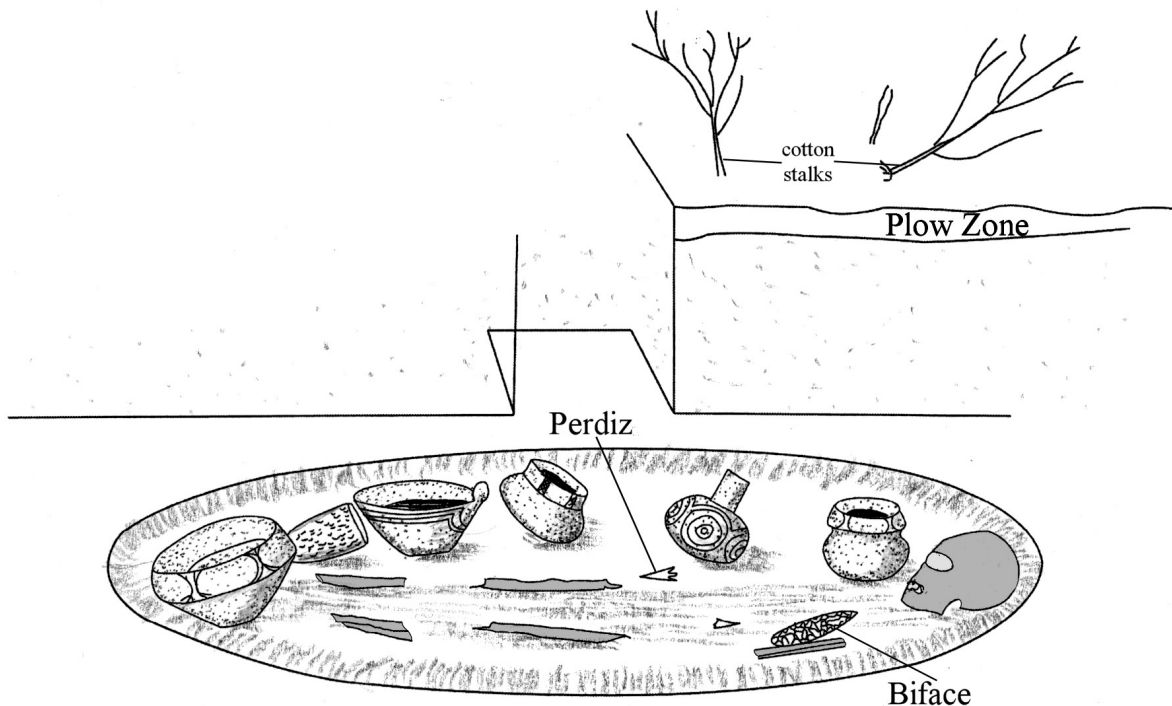


Figure 31. Burial 5 at the Vanderpool site.

BASE DIAMETER (IN CM) AND SHAPE OF BASE: 8.9; circular and flat

ESTIMATED VOLUME (IN LITERS): N/A

DECORATION (INCLUDING MOTIF AND ELEMENTS WHEN APPARENT): The vessel body has four repeated sets of concentric engraved ovals with a small central circle (Figure 32).

PIGMENT USE AND LOCATION ON VESSEL: white pigment in the engraved lines

TYPE AND VARIETY [IF KNOWN]: Poynor Engraved, *Var. S*

VESSEL NO.: 2003.08.730 (FIN S30)

NON-PLASTICS AND PASTE: grog

VESSEL FORM: Carinated bowl

RIM AND LIP FORM: Direct rim and a rounded lip

CORE COLOR: F (fired in a reducing environment and cooled in the open air)

INTERIOR SURFACE COLOR: reddish-brown



Figure 32. Sherds from Poynor Engraved, Var. S bottle, Burial 5 at the Vanderpool site.

EXTERIOR SURFACE COLOR: reddish-brown; fire clouds on the body and base

WALL THICKNESS (RIM, BODY, AND BASE IN MM): rim, 5.6 mm

INTERIOR SURFACE TREATMENT: burnished on the rim, otherwise smoothed

EXTERIOR SURFACE TREATMENT: burnished

HEIGHT (IN CM): 11.9

ORIFICE DIAMETER (IN CM): 18.1

DIAMETER AT BOTTOM OF RIM OR NECK (IN CM): 18.3

BASE DIAMETER (IN CM) AND SHAPE OF BASE: 9.0; circular and flat

ESTIMATED VOLUME (IN LITERS): 1.3

DECORATION (INCLUDING MOTIF AND ELEMENTS WHEN APPARENT): The rim is divided into seven rectangular panels by a series of vertical columns with hatched lines as well as single upper and lower horizontal engraved lines (Figure 33).

PIGMENT USE AND LOCATION ON VESSEL: none

TYPE AND VARIETY [IF KNOWN]: Poynor Engraved, cf. *Var. D*

VESSEL NO.: 2003.08.0008 (FIN S31)

NON-PLASTICS AND PASTE: grog

VESSEL FORM: Conjoined carinated bowls (Figure 34)

RIM AND LIP FORM: Inverted rim and rounded lip



Figure 33. Poynor Engraved, cf. *Var. D* carinated bowl from Burial 5 at the Vanderpool site.

CORE COLOR: F (fired in a reducing environment and cooled in the open air)

INTERIOR SURFACE COLOR: dark yellowish-brown

EXTERIOR SURFACE COLOR: dark yellowish-brown; fire clouds on the body and base; organic residue patches are present on both vessels

WALL THICKNESS (RIM, BODY, AND BASE IN MM): rim, 6.2 mm

INTERIOR SURFACE TREATMENT: smoothed on upper rim

EXTERIOR SURFACE TREATMENT: burnished

HEIGHT (IN CM): 11.5

ORIFICE DIAMETER (IN CM): 12.1

DIAMETER AT BOTTOM OF RIM OR NECK (IN CM): 13.2 (upper vessel); 13.6 cm (lower vessel)

BASE DIAMETER (IN CM) AND SHAPE OF BASE: 7.4; circular and flat

ESTIMATED VOLUME (IN LITERS): 0.83

DECORATION (INCLUDING MOTIF AND ELEMENTS WHEN APPARENT): The lower conjoined vessel is plain, but the upper conjoined vessel has eight oval-shaped panels defined by sets of curvilinear engraved lines and single upper and lower horizontal engraved lines (Figure 34).

PIGMENT USE AND LOCATION ON VESSEL: white pigment in the engraved lines

TYPE AND VARIETY [IF KNOWN]: Poynor Engraved, *var. Cook*

VESSEL NO.: 2003.08.1778 (FIN S32)

NON-PLASTICS AND PASTE: grog

VESSEL FORM: Bowl with tab tail (60 x 25 mm in length and width) and bird/duck effigy head (70 x 35 mm) (Figure 35)

RIM AND LIP FORM: Direct rim and rounded lip

CORE COLOR: F (fired in a reducing environment and cooled in the open air)

INTERIOR SURFACE COLOR: reddish-brown



Figure 34. Conjoined Poynor Engraved, var. Cook carinated bowls, Burial 5 at the Vanderpool site.

EXTERIOR SURFACE COLOR: reddish-brown

WALL THICKNESS (RIM, BODY, AND BASE IN MM): rim, 6.9 mm

INTERIOR SURFACE TREATMENT: smoothed

EXTERIOR SURFACE TREATMENT: burnished

HEIGHT (IN CM): 11.3; 13.3 cm at the top of the effigy head

ORIFICE DIAMETER (IN CM): 22.3

DIAMETER AT BOTTOM OF RIM OR NECK (IN CM): N/A

BASE DIAMETER (IN CM) AND SHAPE OF BASE: 9.6; circular and flat

ESTIMATED VOLUME (IN LITERS): 1.0

DECORATION (INCLUDING MOTIF AND ELEMENTS WHEN APPARENT): The rim has three double sets of horizontal engraved lines around the vessel (Figure 35).



Figure 35. Hood Engraved, var. Hood effigy bowl from Burial 5 at the Vanderpool site.

PIGMENT USE AND LOCATION ON VESSEL: none

TYPE AND VARIETY [IF KNOWN]: Hood Engraved, var. *Hood*

VESSEL NO.: 2003.08.79 (FIN S33)

NON-PLASTICS AND PASTE: grog

VESSEL FORM: Jar with two applied lugs (Figure 36)

RIM AND LIP FORM: Direct rim and rounded lip

CORE COLOR: F (fired in a reducing environment and cooled in the open air)

INTERIOR SURFACE COLOR: reddish-brown; fire clouds on the rim, body, and base

EXTERIOR SURFACE COLOR: reddish-brown; fire clouds on the rim, body, and base

WALL THICKNESS (RIM, BODY, AND BASE IN MM): rim, 7.6 mm

INTERIOR SURFACE TREATMENT: smoothed

EXTERIOR SURFACE TREATMENT: none

HEIGHT (IN CM): 16.3

ORIFICE DIAMETER (IN CM): 11.4



Figure 36. Tool punctated jar, Burial 5 at the Vanderpool site.

DIAMETER AT BOTTOM OF RIM OR NECK (IN CM): 11.4

BASE DIAMETER (IN CM) AND SHAPE OF BASE: 7.6; circular and flat

ESTIMATED VOLUME (IN LITERS): 1.7

DECORATION (INCLUDING MOTIF AND ELEMENTS WHEN APPARENT): There are 15 horizontal rows of tool punctations from the rim to within 15 mm of the vessel base (Figure 36).

PIGMENT USE AND LOCATION ON VESSEL: none

TYPE AND VARIETY [IF KNOWN]: Unidentified utility ware

VESSEL NO.: 2003.08.1074 (FIN 34)

NON-PLASTICS AND PASTE: grog

VESSEL FORM: Carinated bowl

RIM AND LIP FORM: Inverted rim and rounded lip

CORE COLOR: A (fired and cooled in an oxidizing environment)

INTERIOR SURFACE COLOR: yellowish-brown; fire clouds on the base

EXTERIOR SURFACE COLOR: yellowish-brown; fire clouds on the base

WALL THICKNESS (RIM, BODY, AND BASE IN MM): rim, 8.4 mm

INTERIOR SURFACE TREATMENT: smoothed

EXTERIOR SURFACE TREATMENT: burnished

HEIGHT (IN CM): 18.8

ORIFICE DIAMETER (IN CM): 27.6

DIAMETER AT BOTTOM OF RIM OR NECK (IN CM): 29.2

BASE DIAMETER (IN CM) AND SHAPE OF BASE: 11.5; circular and flat

ESTIMATED VOLUME (IN LITERS): 4.6

DECORATION (INCLUDING MOTIF AND ELEMENTS WHEN APPARENT): The rim is divided into nine semi-circles by sets of vertical curvilinear engraved lines (Figure 37). There are also small hatched triangles attached to both sides of the upper semi-circles (see Perttula 2011b:Figure 6-64d).

PIGMENT USE AND LOCATION ON VESSEL: none

TYPE AND VARIETY [IF KNOWN]: Poynor Engraved, *var. Cook*



Figure 37. Poynor Engraved, var. Cook carinated bowl from Burial 5 at the Vanderpool site.

Saline Creek Site

The Saline Creek site is a previously undocumented Late Caddo, Frankston phase cemetery on Saline Creek in Smith County, Texas that was excavated by Buddy Jones, Ray Vanderpool, L. A. Wallace, and Bill Cox in November 1956. Its exact location is not known, but it is likely to have located very near the Vanderpool site (41SM77), also on Saline Creek in the upper part of the Lake Palestine flood pool along the creek.

Burials 1 and 2 were excavated at the site, which was in a cotton field along the west side of Saline Creek (Figure 38). No vessels or other funerary offerings from the two burials have been identified in the Gregg County Museum collections from the site, but burial and vessel drawings are available, and these materials form the basis of our documentation. The two burials were in pits that were oriented northwest-southeast, likely with the head of the deceased at the southeast end of the pit, facing northwest. Both burial pits extended a short distance into the underlying B-horizon clay.

Burial 1 had six ceramic vessels placed along the body of the deceased, from the skull area to the lower legs; the human remains were very fragmentary. Based on vessel drawings, these vessels included a Poynor Engraved cylindrical bottle, two Hood Engraved, *var. Hood* effigy bowls, two broken carinated bowls of uncertain decoration, and a large Poynor Engraved, *var. Hood* carinated bowl along what would have been the lower legs (Figure 39).

Amidst the ceramic vessel funerary offerings were several stone tools. These were a large oval-shaped biface, a ground stone celt, and a tight cluster of eight Perdiz arrow points. The points and the celt may have been inside a leather pouch when they were placed in the grave.

Burial 2 had five ceramic vessels as funerary offerings. By the head of the deceased were a long-necked bottle, a plain everted rim jar, and a cylindrical Hume Engraved bottle (Figure 40). Near the lower legs and feet were a small Killough Pinched jar and a Hood Engraved, *var. Hood* effigy bowl. Eight Perdiz arrow points were scattered along and above the body of the deceased. Near the upper part of the burial, above the head area, was a charcoal concentration (Figure 40), suggesting that a fire had been built and maintained in the grave after it had been partially filled in.

The occurrence of Hood Engraved, *var. Hood* effigy bowls, a Hume Engraved bottle, and a Poynor Engraved, *var. Hood* carinated bowl from the two burials—along with the Killough Pinched jar—confirm that the burials are from a Frankston phase cemetery. The engraved fine wares suggest that the cemetery was in use between ca. A. D. 1480-1560 (Perttula 2011b:Table 6-37).

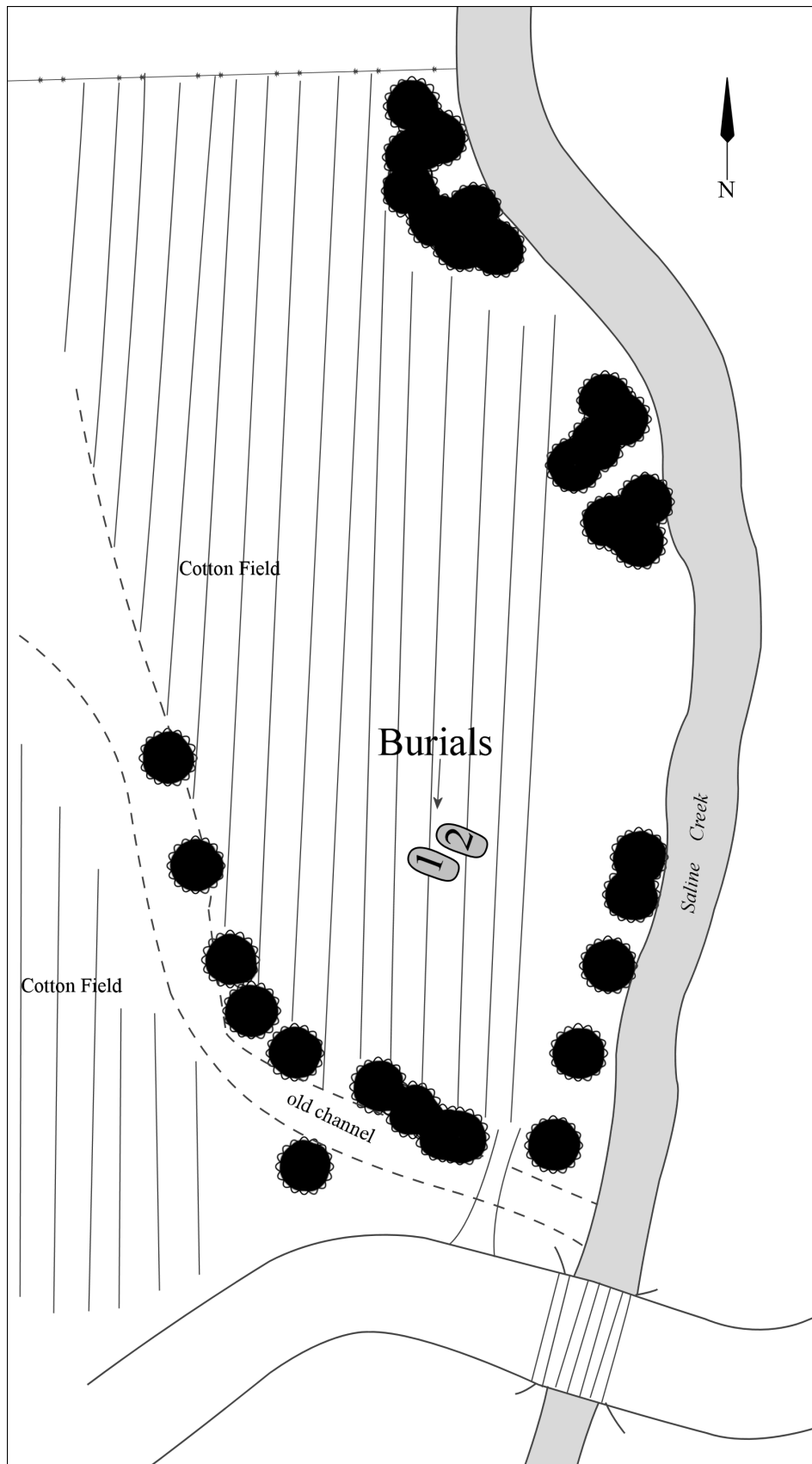


Figure 38. Location of Burials 1 and at the Saline Creek site, Smith County, Texas.

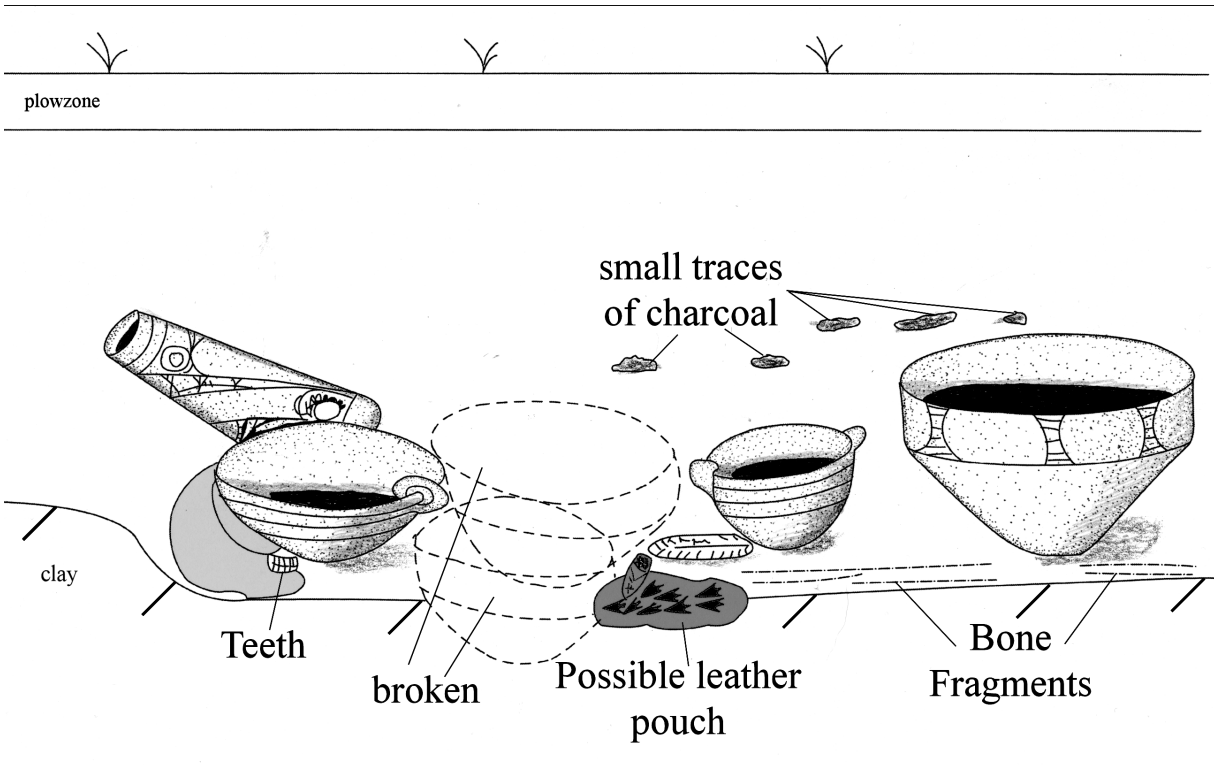


Figure 39. Drawing of Burial 1 at the Saline Creek site.

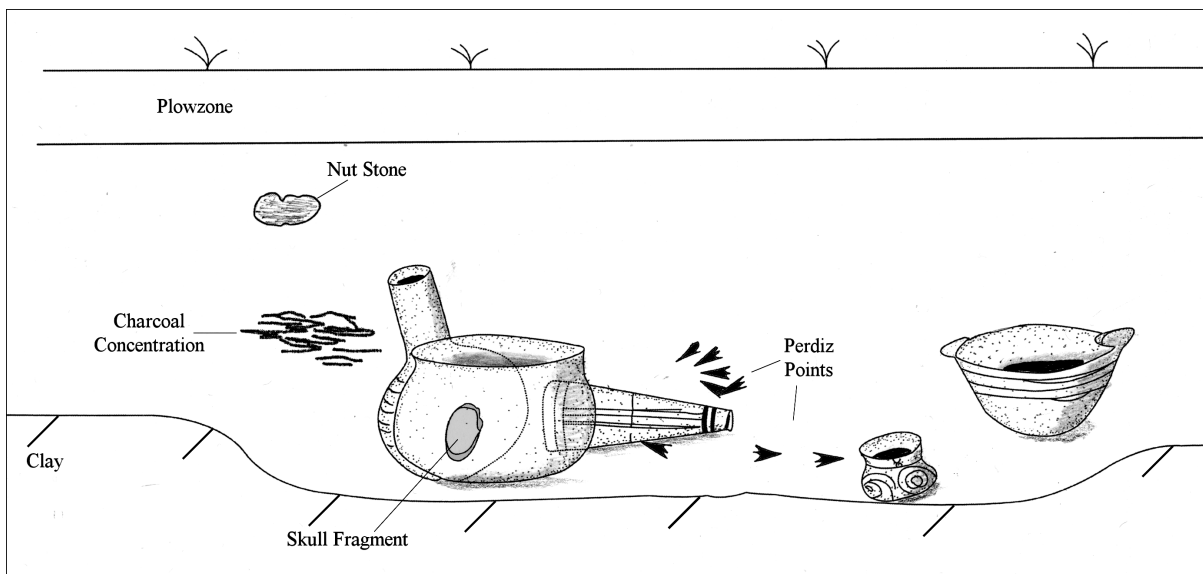


Figure 40. Drawing of Burial 2 at the Saline Creek site.

Pipe Site (41AN67)

Buddy Jones identified and investigated the Pipe site (41AN67) in 1968. The site was on a low terrace or lower toe slope in the Neches River valley, with a tree-covered floodplain to the north. The Pipe site had a substantial midden deposit as well as a cemetery with 21 burials (Figure 41). One of the burials was accompanied by a large mass of broken elbow pipes (Perttula 2011a).

In 1969, a year after this site had been excavated by Buddy Calvin Jones, Southern Methodist University conducted excavations at the Pipe site (which they called the Ferguson site since they were unaware of the Jones excavations) at Lake Palestine (Anderson et al. 1974:121-134). This work recovered an abundance of Frankston phase ceramic vessel sherds (n=7964, including Poynor Engraved, Hume Engraved, Maydelle Incised, Bullard Brushed, Killough Pinched, and LaRue Neck Banded) and ceramic pipe sherds (n=43), mussel shell fragments, animal bones, and a modicum of chipped stone tool artifacts. The latter included 16 arrow points and fragments (of the Perdiz type), 13 flake tools and scrapers, and only 297 pieces of lithic debris.

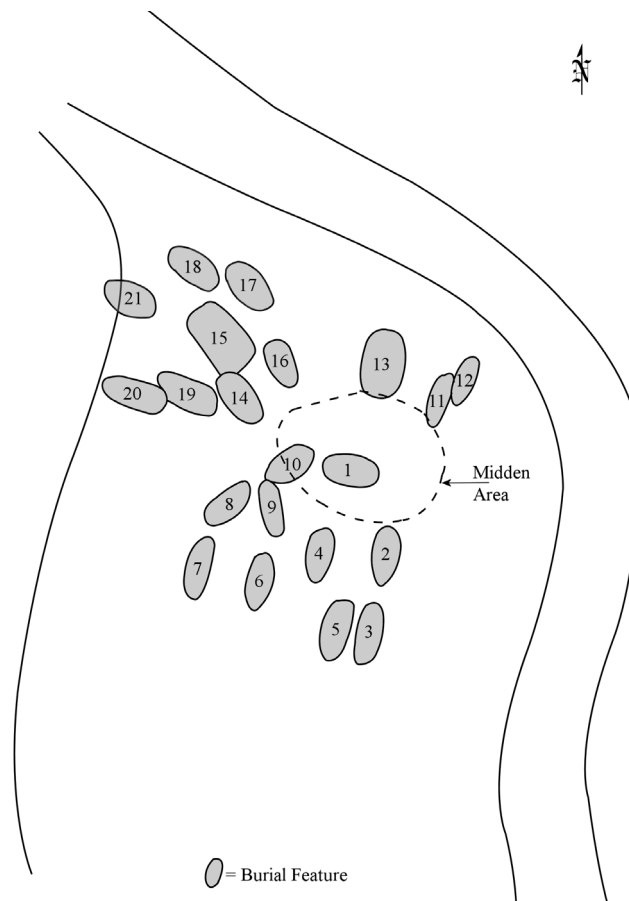


Figure 41. Map of the Pipe site redrawn from a Buddy Jones map on file at the Gregg County Historical Museum.

There are two radiocarbon dates from the Pipe/Ferguson site (Perttula 1997:Table 1), both obtained from the SMU excavations (Anderson et al. 1974). Both dates are on a wood post fragment buried in the midden deposits. These dates, using IntCal09 (Reimer et al. 2009) to calibrate their conventional ages, have calibrated age ranges at 2 sigma (95% probability) of A.D. 1529-1683 (Tx-1275) and A.D. 1444-1644 (Tx-1276). The mean calibrated age range of these dates is A.D. 1487-1663. A seriation of ceramics from Early to Historic Caddo sites developed for the upper Neches River/Lake Palestine area, indicates that the Pipe/Ferguson site likely dates to the middle part of the Frankston phase, from between ca. A.D. 1480-1560 (Perttula 2011b). Stable isotope analysis of collagen and apatite in a right femur from Burial 11 indicates that the ancestral Caddo group that lived in this part of the upper Neches River basin had a diet with a high contribution of maize (Wilson et al. 2012:83).

One of the vessels from the Pipe site has been recently identified in the Gregg County Historical Museum collections, an engraved bottle from Burial 2.

SITE NAME OR SITE NUMBER: Pipe (41AN67)

VESSEL NO.: 2003.08.22

NON-PLASTICS AND PASTE: grog

VESSEL FORM: Bottle with a short neck

RIM AND LIP FORM: Direct rim and a flat lip

CORE COLOR: G (fired in a reducing environment and cooled in the open air)

INTERIOR SURFACE COLOR: dark brown

EXTERIOR SURFACE COLOR: dark brown

WALL THICKNESS (RIM, BODY, AND BASE IN MM): rim, 6.5 mm

INTERIOR SURFACE TREATMENT: none

EXTERIOR SURFACE TREATMENT: burnished

HEIGHT (IN CM): 25.8

ORIFICE DIAMETER (IN CM): 5.0

DIAMETER AT BOTTOM OF RIM OR NECK (IN CM): 6.9; maximum width of the body is 14.5 cm

BASE DIAMETER (IN CM) AND SHAPE OF BASE: 7.0; circular and flat

ESTIMATED VOLUME (IN LITERS): 0.72

DECORATION (INCLUDING MOTIF AND ELEMENTS WHEN APPARENT): The vessel body has eight open vertical panels defined by a series of vertical hatched engraved zones that extend from the neck to near the base (Figure 42). There is a single horizontal engraved line that encircles the vessel body just above the base.

PIGMENT USE AND LOCATION ON VESSEL: red pigment in the engraved lines

TYPE AND VARIETY [IF KNOWN]: Poynor Engraved



Figure 42. Poynor Engraved bottle from Burial 2 at the Pipe site (41AN67).

The Byars Ranch Site in Smith County, Texas

There is a single ancestral Caddo ceramic vessel in the collections of the Gregg County Historical Museum from the Byars Ranch site in Smith County (Perttula 2006:96). This site appears to have been located in the Neches River valley/Lake Palestine area in the southwestern part of the county, but its precise location is not known. Nothing more is known about the site or the context of the vessel, although it is quite likely that the vessel was collected from a Caddo burial.

VESSEL NO.: 2003.08.434

NON-PLASTICS AND PASTE: grog

VESSEL FORM: Bottle with a cylindrical-shaped body and a short neck

RIM AND LIP FORM: Direct rim and a rounded lip

CORE COLOR: G (fired in a reducing environment and cooled in the open area)

INTERIOR SURFACE COLOR: dark yellowish-brown

EXTERIOR SURFACE COLOR: yellowish-brown; fire clouds on the rim, body, and base

WALL THICKNESS (RIM, BODY, AND BASE IN MM): neck, 6.9 mm

INTERIOR SURFACE TREATMENT: none

EXTERIOR SURFACE TREATMENT: burnished between decorative panels

HEIGHT (IN CM): 19.7

ORIFICE DIAMETER (IN CM): 4.3

DIAMETER AT BOTTOM OF RIM OR NECK (IN CM): maximum body width, 10.0 cm

BASE DIAMETER (IN CM) AND SHAPE OF BASE: 8.3; flat and circular

ESTIMATED VOLUME (IN LITERS): 0.66

DECORATION (INCLUDING MOTIF AND ELEMENTS WHEN APPARENT): There are four vertically-oriented panels with linear and tool punctated decorations that extend from the bottle neck to just above the vessel base (Figure 43). The panels include alternating rows of triangular and linear punctations, either in sets of three or in sets of four or five alternating rows.

PIGMENT USE AND LOCATION ON VESSEL: none

TYPE AND VARIETY [IF KNOWN]: cf. Hume Punctated

The form of the bottle from the Byars site is very similar to that commonly seen on Late Caddo Frankston phase Hume Engraved vessels (Suhm and Jelks 1962:Plate 42a-c, e). Thus, it is likely that the site has a ca. A.D. 1400-1650 component with a cemetery.



Figure 43. cf. Hume Punctated bottle from the Byars Ranch site.

Upper Neches Vessel Series

A series of 11 vessels of as yet unidentified provenience in the Gregg County Historical Museum are stylistically consistent with Late Caddo Frankston phase vessels found in upper Neches River basin sites in Smith, Anderson, and Cherokee counties. Most of the vessels in this series are thought to be from sites in Smith County, based on the fact that many have a S. C. label on them.

The 11 vessels include both fine wares, utility wares, and plain wares. The fine wares are Poynor Engraved carinated bowls (n=5) with a variety of motifs, a Poynor Engraved bottle, and a Hood Engraved, *var. Hood* effigy bowl; the utility wares comprise a Bullard Brushed jar, a brushed-applied jar, and a brushed-incised bowl; and the plain wares include one plain bowl. The vessels are tempered with combinations of grog (82%), bone (27%), and/or hematite (18%). The range of fine wares suggest they are from burials that date from ca. A.D. 1400-1560 in the Frankston phase (Perttula 2011b:Table 6-37).

VESSEL NO.: 2003.08.19 (1. S. C.)

NON-PLASTICS AND PASTE: grog

VESSEL FORM: Carinated bowl

RIM AND LIP FORM: Direct rim and a rounded lip

CORE COLOR: A (fired and cooled in an oxidizing environment)

INTERIOR SURFACE COLOR: yellowish-brown; fire cloud on the base

EXTERIOR SURFACE COLOR: yellowish-brown

WALL THICKNESS (RIM, BODY, AND BASE IN MM): rim, 6.5 mm

INTERIOR SURFACE TREATMENT: smoothed

EXTERIOR SURFACE TREATMENT: burnished

HEIGHT (IN CM): 18.5

ORIFICE DIAMETER (IN CM): 29.0

DIAMETER AT BOTTOM OF RIM OR NECK (IN CM): 29.5

BASE DIAMETER (IN CM) AND SHAPE OF BASE: 8.5; circular and flat

ESTIMATED VOLUME (IN LITERS): 4.8

DECORATION (INCLUDING MOTIF AND ELEMENTS WHEN APPARENT): The rim is divided into 12 ovals by hatched and cross-hatched engraved brackets (Figure 44). The vessel body has faint diagonal brushing marks that extend from the carina to the vessel base.

PIGMENT USE AND LOCATION ON VESSEL: none

TYPE AND VARIETY [IF KNOWN]: Poynor Engraved, *var. Hood*

VESSEL NO.: 2003.08.333 (#3-BCJ)

NON-PLASTICS AND PASTE: grog

VESSEL FORM: Carinated bowl

RIM AND LIP FORM: Direct rim and a rounded lip

CORE COLOR: F (fired in a reducing environment and cooled in the open air)



Figure 44. Poynor Engraved, *var. Hood* carinated bowl.

INTERIOR SURFACE COLOR: yellowish-brown; fire clouds on the rim, body, and base

EXTERIOR SURFACE COLOR: reddish-brown; fire clouds on the rim, body, and base

WALL THICKNESS (RIM, BODY, AND BASE IN MM): rim, 5.2 mm

INTERIOR SURFACE TREATMENT: smoothed

EXTERIOR SURFACE TREATMENT: burnished

HEIGHT (IN CM): 10.2

ORIFICE DIAMETER (IN CM): 19.1

DIAMETER AT BOTTOM OF RIM OR NECK (IN CM): 19.2

BASE DIAMETER (IN CM) AND SHAPE OF BASE: 10.3; flat and circular

ESTIMATED VOLUME (IN LITERS): 1.2

DECORATION (INCLUDING MOTIF AND ELEMENTS WHEN APPARENT): The rim has two different engraved elements, each alternately repeated four times around the rim. The first consists of vertical cross-hatched panels, while the second consists of nested concentric ovals (Figure 45).

PIGMENT USE AND LOCATION ON VESSEL: none

TYPE AND VARIETY [IF KNOWN]: Poynor Engraved, *var. unspecified*

VESSEL NO.: 2003.08.369 (10-BCJ)

NON-PLASTICS AND PASTE: grog and bone

VESSEL FORM: Jar

RIM AND LIP FORM: Everted rim and rounded lip

CORE COLOR: F (fired in a reducing environment and cooled in the open air)

INTERIOR SURFACE COLOR: light yellowish-brown; fire cloud on the rim

EXTERIOR SURFACE COLOR: yellowish-brown; fire clouds on the body and base

WALL THICKNESS (RIM, BODY, AND BASE IN MM): rim, 7.0 mm



Figure 45. Poynor Engraved, var. unspecified carinated bowl.

INTERIOR SURFACE TREATMENT: smoothed

EXTERIOR SURFACE TREATMENT: none

HEIGHT (IN CM): 12.7

ORIFICE DIAMETER (IN CM): 11.3

DIAMETER AT BOTTOM OF RIM OR NECK (IN CM): 10.8

BASE DIAMETER (IN CM) AND SHAPE OF BASE: 4.9; flat and circular

ESTIMATED VOLUME (IN LITERS): 0.86

DECORATION (INCLUDING MOTIF AND ELEMENTS WHEN APPARENT): The vessel rim has horizontal to diagonal brushing, with a single row of tool punctations under the lip. There is a second row of tool punctations at the rim-body juncture. The vessel body has vertical brushing, and there are four diagonal applied ridges that were applied above the brushing (Figure 46). These ridges are outlined on either side by diagonal incised lines.

PIGMENT USE AND LOCATION ON VESSEL: none

TYPE AND VARIETY [IF KNOWN]: Bullard Brushed



Figure 46. Bullard Brushed jar.

VESSEL NO.: 2003.08.393 (9-BCJ)

NON-PLASTICS AND PASTE: grog

VESSEL FORM: Jar

RIM AND LIP FORM: Direct rim and a rounded lip

CORE COLOR: B (fired and cooled in a reducing environment)

INTERIOR SURFACE COLOR: very dark grayish-brown

EXTERIOR SURFACE COLOR: very dark grayish-brown; thick organic residue on the body

WALL THICKNESS (RIM, BODY, AND BASE IN MM): rim, 5.5 mm

INTERIOR SURFACE TREATMENT: smoothed

EXTERIOR SURFACE TREATMENT: none

HEIGHT (IN CM): 9.4

ORIFICE DIAMETER (IN CM): 8.4

DIAMETER AT BOTTOM OF RIM OR NECK (IN CM): 8.2

BASE DIAMETER (IN CM) AND SHAPE OF BASE: 6.2; flat and circular

ESTIMATED VOLUME (IN LITERS): 0.47

DECORATION (INCLUDING MOTIF AND ELEMENTS WHEN APPARENT): The rim has horizontal brushing marks; the lip is notched. The vessel body is divided into panels by four vertical sets of applied nodes, and the panels are filled with diagonal and overlapping brushing marks (Figure 47).

PIGMENT USE AND LOCATION ON VESSEL: none

TYPE AND VARIETY [IF KNOWN]: Unidentified utility ware

VESSEL NO.: 2003.08.396 (#8-BCJ)

NON-PLASTICS AND PASTE: bone

VESSEL FORM: Bottle

RIM AND LIP FORM: Direct rim and a rounded lip

CORE COLOR: F (fired in a reducing environment and cooled in the open air)

INTERIOR SURFACE COLOR: yellowish-red

EXTERIOR SURFACE COLOR: yellowish-red; fire clouds on the rim and body

WALL THICKNESS (RIM, BODY, AND BASE IN MM): rim, 4.3 mm



Figure 47. Brushed-appliqued jar.

INTERIOR SURFACE TREATMENT: none

EXTERIOR SURFACE TREATMENT: burnished

HEIGHT (IN CM): 11.8

ORIFICE DIAMETER (IN CM): 2.9

DIAMETER AT BOTTOM OF RIM OR NECK (IN CM): 3.8; 9.2 cm maximum body diameter

BASE DIAMETER (IN CM) AND SHAPE OF BASE: 5.3; circular and flat

ESTIMATED VOLUME (IN LITERS): 0.25

DECORATION (INCLUDING MOTIF AND ELEMENTS WHEN APPARENT): The vessel body has two sets of engraved stacked hatched triangles as panel dividers, and the two panels have nested engraved diamonds. Each of the stacked hatched triangle dividers have inner excised triangles, while the panels have four sets of nested diamonds; two of these have small excised triangles along them. The innermost diamond has two inner circles, the innermost with excised rays, the outermost outlined by hatched engraved lines (Figure 48).

PIGMENT USE AND LOCATION ON VESSEL: red pigment in the engraved lines

TYPE AND VARIETY [IF KNOWN]: Poynor Engraved

VESSEL NO.: 2003.08.472 (#6)

NON-PLASTICS AND PASTE: grog

VESSEL FORM: Bowl

RIM AND LIP FORM: Direct rim and rounded lip

CORE COLOR: A (fired and cooled in an oxidizing environment)

INTERIOR SURFACE COLOR: light yellowish-brown

EXTERIOR SURFACE COLOR: light yellowish-brown

WALL THICKNESS (RIM, BODY, AND BASE IN MM): rim, 5.2 mm

INTERIOR SURFACE TREATMENT: smoothed

EXTERIOR SURFACE TREATMENT: burnished

HEIGHT (IN CM): 5.6

ORIFICE DIAMETER (IN CM): 11.8

DIAMETER AT BOTTOM OF RIM OR NECK (IN CM): N/A

BASE DIAMETER (IN CM) AND SHAPE OF BASE: 5.1; flat and circular

ESTIMATED VOLUME (IN LITERS): 0.26

DECORATION (INCLUDING MOTIF AND ELEMENTS WHEN APPARENT): Plain (Figure 49)

PIGMENT USE AND LOCATION ON VESSEL: none



Figure 48. Poynor Engraved bottle.

TYPE AND VARIETY [IF KNOWN]: unidentified plain ware

VESSEL NO.: 2003.08.699 (422-S, BCJ)

NON-PLASTICS AND PASTE: grog and hematite

VESSEL FORM: Bowl

RIM AND LIP FORM: Direct rim and a rounded lip

CORE COLOR: C (incompletely oxidized during firing)



Figure 49. Plain bowl.

INTERIOR SURFACE COLOR: reddish-brown

EXTERIOR SURFACE COLOR: reddish-brown; fire clouds on the rim and body

WALL THICKNESS (RIM, BODY, AND BASE IN MM): rim, 4.8 mm

INTERIOR SURFACE TREATMENT: none

EXTERIOR SURFACE TREATMENT: smoothed

HEIGHT (IN CM): 6.5

ORIFICE DIAMETER (IN CM): 11.0

DIAMETER AT BOTTOM OF RIM OR NECK (IN CM): N/A

BASE DIAMETER (IN CM) AND SHAPE OF BASE: 4.6; flat and circular

ESTIMATED VOLUME (IN LITERS): 0.29

DECORATION (INCLUDING MOTIF AND ELEMENTS WHEN APPARENT): The rim has two horizontal incised lines, while the remainder of the vessel has diagonal and overlapping brushing marks covering the exterior surface (Figure 50).

PIGMENT USE AND LOCATION ON VESSEL: none

TYPE AND VARIETY [IF KNOWN]: Unidentified utility ware

VESSEL NO.: 2003.08.737 (2, S. C.)

NON-PLASTICS AND PASTE: bone

VESSEL FORM: Bowl with tab tail (26 x 39 mm) and an effigy head (52 x 33 x 9.5 mm) (Figure 51)

RIM AND LIP FORM: Direct rim and a rounded lip

CORE COLOR: F (fired in a reducing environment and cooled in the open air)



Figure 50. Incised-brushed bowl.

INTERIOR SURFACE COLOR: yellowish-brown; fire cloud on the rim

EXTERIOR SURFACE COLOR: reddish-brown; fire clouds on the rim, body, and base, as well as on the effigy head

WALL THICKNESS (RIM, BODY, AND BASE IN MM): rim, 6.7 mm

INTERIOR SURFACE TREATMENT: smoothed

EXTERIOR SURFACE TREATMENT: burnished

HEIGHT (IN CM): 10.8; 12.5 cm at the top of the effigy head

ORIFICE DIAMETER (IN CM): 17.1

DIAMETER AT BOTTOM OF RIM OR NECK (IN CM): N/A

BASE DIAMETER (IN CM) AND SHAPE OF BASE: 8.7; flat and circular

ESTIMATED VOLUME (IN LITERS): 0.74

DECORATION (INCLUDING MOTIF AND ELEMENTS WHEN APPARENT): There are three horizontal engraved lines on the rim of the vessel, as well as an engraved line on the effigy head (Figure 51). The horizontal lines are not continuous, but are separated under the tab tail.

PIGMENT USE AND LOCATION ON VESSEL: none

TYPE AND VARIETY [IF KNOWN]: Hood Engraved, *var. Hood*

VESSEL NO.: 2003.08.738 (4-BCJ)

NON-PLASTICS AND PASTE: grog and hematite

VESSEL FORM: Globular carinated bowl

RIM AND LIP FORM: Direct rim and a rounded lip

CORE COLOR: A (fired and cooled in an oxidizing environment)

INTERIOR SURFACE COLOR: dark reddish-brown; fire clouds on the rim, body, and base

EXTERIOR SURFACE COLOR: dark reddish-brown; fire clouds on the rim, body, and base

WALL THICKNESS (RIM, BODY, AND BASE IN MM): rim, 5.7 mm



Figure 51. Hood Engraved, var. Hood effigy bowl.

INTERIOR SURFACE TREATMENT: burnished on the rim, otherwise smoothed

EXTERIOR SURFACE TREATMENT: burnished

HEIGHT (IN CM): 12.7

ORIFICE DIAMETER (IN CM): 12.5

DIAMETER AT BOTTOM OF RIM OR NECK (IN CM): 12.4

BASE DIAMETER (IN CM) AND SHAPE OF BASE: 7.6; flat and circular

ESTIMATED VOLUME (IN LITERS): 0.96

DECORATION (INCLUDING MOTIF AND ELEMENTS WHEN APPARENT): The rim is divided into six ovals by sets of curvilinear arcing engraved lines (Figure 52). The top and bottom of the rim panel is delineated by single horizontal engraved lines.

PIGMENT USE AND LOCATION ON VESSEL: none

TYPE AND VARIETY [IF KNOWN]: Poynor Engraved, *var. Cook*

VESSEL NO.: 2003.08.1749 (6, S. C.)



Figure 52. Poynor Engraved, var. Cook carinated bowl.

NON-PLASTICS AND PASTE: grog

VESSEL FORM: Bowl or cup

RIM AND LIP FORM: Direct rim and a rounded lip

CORE COLOR: F (fired in a reducing environment and cooled in the open air)

INTERIOR SURFACE COLOR: light yellowish-brown; fire clouds on the rim and body

EXTERIOR SURFACE COLOR: yellowish-brown; fire clouds on the rim and body

WALL THICKNESS (RIM, BODY, AND BASE IN MM): rim, 4.1 mm

INTERIOR SURFACE TREATMENT: smoothed

EXTERIOR SURFACE TREATMENT: smoothed

HEIGHT (IN CM): 11.5

ORIFICE DIAMETER (IN CM): 11.0

DIAMETER AT BOTTOM OF RIM OR NECK (IN CM): N/A

BASE DIAMETER (IN CM) AND SHAPE OF BASE: 5.7; flat and circular

ESTIMATED VOLUME (IN LITERS): 0.50

DECORATION (INCLUDING MOTIF AND ELEMENTS WHEN APPARENT): The rim panel has nine overlapping sets of faint engraved concentric ovals pendant from a single horizontal engraved line that encircles the vessel (Figure 53).

PIGMENT USE AND LOCATION ON VESSEL: none

TYPE AND VARIETY [IF KNOWN]: Poynor Engraved, cf. *Var. S* (Perttula 2011b:Figure 6-65)

VESSEL NO.: 2003.08.1792 (#1-BCJ)

NON-PLASTICS AND PASTE: grog

VESSEL FORM: Carinated bowl

RIM AND LIP FORM: Direct rim and rounded lip

CORE COLOR: F (fired in a reducing environment and cooled in the open air)

INTERIOR SURFACE COLOR: yellowish-brown; fire cloud on the base

EXTERIOR SURFACE COLOR: dark yellowish-brown; fire clouds on the body

WALL THICKNESS (RIM, BODY, AND BASE IN MM): rim, 6.0 mm

INTERIOR SURFACE TREATMENT: burnished on the rim, otherwise smoothed

EXTERIOR SURFACE TREATMENT: burnished

HEIGHT (IN CM): 12.3

ORIFICE DIAMETER (IN CM): 16.6

DIAMETER AT BOTTOM OF RIM OR NECK (IN CM): 16.6



Figure 53. Poynor Engraved, cf. Var. S bowl or cup.

BASE DIAMETER (IN CM) AND SHAPE OF BASE: 8.9; flat and circular

ESTIMATED VOLUME (IN LITERS): 1.2

DECORATION (INCLUDING MOTIF AND ELEMENTS WHEN APPARENT): The rim panel is divided into eight ovals by a series of excised brackets/dividers that extend from single upper and lower horizontal engraved lines that encircle the vessel (Figure 54).

PIGMENT USE AND LOCATION ON VESSEL: none

TYPE AND VARIETY [IF KNOWN]: Poynor Engraved, *var. Hood*



Figure 54. Poynor Engraved, var. Hood carinated bowl.

Summary and Conclusions

In this publication, we have discussed the archaeological findings from several ancestral Caddo sites with burials in the upper Neches River basin in Anderson and Smith counties, and probably also from Cherokee County (concerning the upper Neches vessel series). These sites and collections were obtained by Buddy Jones in the 1950s and early 1960s, and they all have archaeological materials that date after A.D. 1400, during the Frankston phase, and one burial (Burial 3) at the Vanderpool site (41SM77) has European trade goods (+800 glass beads) and Patton Engraved ceramic vessels that indicate this interment dates to the late 17th-early 18th century, during the post-A.D. 1650 Allen phase. This burial is one of a relatively low number of upper Neches River basin sites that have European trade goods found together with Caddo archaeological material remains, either found in burial associations (Cole 1975; Kleinschmidt 1982; Perttula 2010, 2011c) or from habitation contexts (Perttula and Nelson 2007; Walters and Perttula 2012), and thus they document contact between the Caddo groups living in this region and European traders.

Although there is not much specific information available about the burial excavations at the sites, it appears that the burials are much like those from other upper Neches River basin Caddo sites. They are in cemeteries likely kept separate from nearby habitation areas, with single interments, probably adults, that were laid in extended supine position with the deceased's head at the eastern end of the grave, facing west towards the setting sun (Perttula 2011c:431-432). The deceased had accompanying funerary offerings, namely an assortment of ceramic vessels and arrow points (most commonly Perdiz points, probably in quivers), as well as clay elbow pipes.

In the present set of upper Neches River basin sites, there is different levels of information available on 51 vessels from funerary contexts, including 31 vessels from Vanderpool; seven from the Saline Creek site; one vessel from the Pipe site (41AN67); one vessel from the Byars Ranch site in Smith County; and 11 vessels from uncertain proveniences in an upper Neches River vessel series. Vessel forms include carinated bowls (n=17, 33%), bowls (n=6, 12%), effigy bowls (n=6, 12%), jars (n=12, 23%), and bottles (n=10, 20%). Effigy bowls are a notable feature of upper Neches River post-A.D. 1400 vessel assemblages (Perttula 2011b).

These vessels are tempered with grog (n=21, 49%), grog-bone (n=2, 4.5%), grog-hematite (n=13, 30%), bone (n=6, 14%), and bone-hematite (n=2, 4.5%). Vessels with grog, either as the sole temper or in combination with either bone or hematite, comprise 82% of the analyzed sample from these sites. Similarly, 23% have bone temper and 34% have hematite temper. The use of hematite for tempering has been noted to be especially common in upper Neches River basin Caddo vessel assemblages that date after ca. A.D. 1480 (Perttula 2011b:278)

The vessels were fired in several different ways: fired and cooled in an oxidizing or high oxygen environment (n=12, 28%); incompletely oxidized during firing (n=1, 2%); fired and cooled in a reducing or low oxygen environment (n=4, 9%); and fired in a reducing environment but cooled in the open air (n=26, 60%). Almost 70% of the vessels were fired in a reducing environment, which was a common practice in most East Texas Caddo ceramic assemblages. The

relatively high proportion of vessels fired in an oxidizing or incompletely oxidizing environments (leaving the vessels with a reddish-brown color) is consistent with firing conditions noted in a large sample of mortuary vessels from Frankston phase sites in Anderson and Cherokee counties (Perttula 2011b:Table 6-33), and this form of firing vessels became more common after ca. A.D. 1480 to A.D. 1560 (Perttula 2011b:278).

Most of these funerary vessels were decorated. Only three vessels (6%) were plain. Fine wares (n=36), all engraved, comprised 75% of these decorated vessels and utility wares (n=12) only 25%. These were brushed jars and carinated bowls (n=4), brushed-punctated (n=1), brushed-incised (n=2), brushed-appliqued (n=1), appliqued-pinched (n=1), pinched (n=1), and tool punctated jars and bottles (n=2). Identified types include Bullard Brushed (n=3), Poynor Brushed (n=1; i.e., globular carinated bowl with a brushed vessel body and a plain rim), Killough Pinched (n=1), and Hume Punctated (n=1; i.e., elongated bottle with vertical punctated elements instead of engraving). Killough Pinched, Bullard Brushed, and Maydelle Incised vessels are the most common in a large vessel database from the upper Neches River basin, and they account for 55% of the utility wares in the sample (Perttula 2011b:Table 6-35). Brushed vessels, including Bullard Brushed, represent approximately 47% of the utility wares in this vessel database.

The fine wares at these upper Neches River basin sites are dominated by Poynor Engraved carinated bowls, including several varieties, namely *var. Blackburn* (n=2), *var. Cook* (n=3), *var. Freeman* (n=1), *var. Hood* (n=7), as well as regional varieties (varieties known from only a few sites, Perttula [2011b:267-268]) *Var. D* (n=1), *Var. E* (n=2), *Var. I* (n=1), and *Var. S* (n=3); there is also one Poynor Engraved, *var. unspecified* vessel. There are also Poynor Engraved bottles (n=3), Hume Engraved, *var. Hume* bottles (n=2), bottles with unidentified engraved motifs (n=2), Hood Engraved, *var. Hood* effigy bowls (n=6), and Patton Engraved bowls and carinated bowls (n=2, both from the Vanderpool site). Poynor Engraved, *var. Hood* and Hood Engraved, *var. Hood* are the most common fine wares in these assemblages. In a larger database of post-A.D. 1400 upper Neches River fine ware vessels (n=462), Poynor Engraved carinated bowls and bowls comprise 50% of the vessels, 9% are Poynor Engraved bottles, 11% are Hume Engraved bottles, and Hood Engraved bowls comprise another 12%. Fine wares account for 73% of the total of 630 utility ware, plain ware, and fine ware vessels in this upper Neches River basin vessel sample (Perttula 2011b:Table 6-35).

The seriation of fine ware vessels in the upper Neches River basin by Perttula (2011b:Table 6-37) suggests that the sites discussed in this publication date primarily between A.D. 1480-1650, though there may have been use of the sites between A.D. 1400-1480 as well, and one burial from the Vanderpool site dates from the late 17th-early 18th century. This temporal estimation for the present set of vessels from mortuary contexts is based on the common occurrence of Poynor Engraved, *var. Hood* and *var. Freeman* from A.D. 1480-1650 in other upper Neches River basin sites, Poynor Engraved, *var. Blackburn* and *var. Cook* from ca. A.D. 1400-1560, and the frequency of Hood Engraved effigy bowls between ca. A.D. 1400-1560. Hume Engraved bottles occur only in ca. A.D. 1480-1650 mortuary contexts. Regarding the regional varieties of Poynor Engraved in the present set of sites, *Var. I* and *Var. S* are present in ca. A.D. 1400-1480 mortuary contexts in other sites in the basin, while *Var. D* has been found in ca. A.D. 1480-1560 contexts, and *Var. E* is present in cemeteries that date from ca. A.D. 1480-1650.

In summary, the mortuary vessels documented from the Vanderpool, Saline Creek, Pipe, and the Byars Ranch sites, and the vessels in the upper Neches River vessel series, are evidence of ancestral Caddo use of cemeteries in this region for at least a 300 year period, from ca. A.D. 1400 to the early 18th century. Their principal use was after ca. A.D. 1480. The mortuary practices evident from the study of the notes, records, and vessels we have documented in the Buddy Jones collection at the Gregg County Historical Museum are consistent with the practices and beliefs apparent in many other Frankston and Allen phase communities and cemeteries in the upper Neches River basin in Anderson, Cherokee, and Smith counties in East Texas.

References Cited

- Anderson, K. M., K. Gilmore, O. F. McCormick III, and E. P. Morenon
 1974 *Archaeological Investigations at Lake Palestine, Texas*. Contributions in Anthropology No. 11. Department of Anthropology, Southern Methodist University, Dallas.
- Cole, N. M.
 1975 Early Historic Caddoan Mortuary Practices in the Upper Neches Drainage, East Texas. Master's thesis, Department of Anthropology, The University of Texas at Austin.
- Johnson, L., Jr.
 1961 An Archeological Survey of Blackburn Crossing Reservoir on the Upper Neches River. *Bulletin of the Texas Archeological Society* 31:213-238.
- Kleinschmidt, U. K. W.
 1982 Review and Analysis of the A. C. Saunders Site, 41AN19, Anderson County, Texas. Master's thesis, Department of Anthropology, The University of Texas at Austin.
- Perttula, T. K.
 1997 A Compendium of Radiocarbon and Oxidizable Carbon Ratio Dates from Archaeological Sites in East Texas, with a Discussion of the Age and Dating of Select Components and Phases. *Radiocarbon* 39(3):305-341.
- 2010 Archaeological Findings from an Historic Caddo Site (41AN184) in Anderson County, Texas. *Journal of Northeast Texas Archaeology* 33:53-61.
- 2011a The Pipe Site, a Late Caddo Site at Lake Palestine in Anderson County, Texas. *Journal of Northeast Texas Archaeology* 35:47-80.
- 2011b The Ceramic Artifacts from the Lang Pasture Site (41AN38) and the Place of the Site within an Upper Neches River Basin Caddo Ceramic Tradition. In *Archeological Investigations at the Lang Pasture Site (41AN38) in the Upper Neches River Basin of East Texas*, assembled and edited by T. K. Perttula, D. B. Kelley, and R. A. Ricklis pp. 145-320. Archeological Studies Program report No. 129. Texas Department of Transportation, Environmental Affairs Division, Austin.
- 2011c Caddo Mortuary Practices in the Upper Neches River Basin in East Texas. In *Archeological Investigations at the Lang Pasture Site (41AN38) in the Upper Neches River Basin of East Texas*, assembled and edited by T. K. Perttula, D. B. Kelley, and R. A. Ricklis pp. 403-433. Archeological Studies Program report No. 129. Texas Department of Transportation, Environmental Affairs Division, Austin.
- Perttula, T. K., with contributions by D. E. Wilson and M. Walters
 2006 *A Study of the Buddy Jones Collection from Northeast Texas Caddo Sites*. Special Publication No. 6. Friends of Northeast Texas Archaeology, Pittsburg and Austin.

- Reimer, P. J., M. G. L. Baillie, E. Bard, A. Bayliss, J. W. Beck, P. G. Blackwell, C. Bronk Ramsey, C. E. Buck, G. S. Burr, R. L. Edwards, M. Friedrich, P. M. Grootes, T. P. Guilderson, I. Hajdas, T. J. Heaton, A. G. Hogg, K. A. Hughen, B. Kromer, F. G. McCormac, S. W. Manning, R. W. Reimer, D. A. Richards, J. R. Southon, S. Talamo, C. S. M. Turney, J. van der Plicht, and C. E. Weyhenmeyer
2009 IntCal09 and Marine09 Radiocarbon Age Calibration Curves, 0-50,000 cal BP. *Radiocarbon* 51:1111-1150.
- Suhm, D. A., and E. B. Jelks (editors)
1962 *Handbook of Texas Archeology: Type Descriptions*. Special Publication No. 1, Texas Archeological Society, and Bulletin No. 4, Texas Memorial Museum, Austin. Reprinted in 2009, Gustav's Library, Davenport, Iowa.
- Walters, M. and T. K. Perttula
2012 Certain Caddo Sites on Stone Chimney Creek, Cherokee County, Texas. *Journal of Northeast Texas Archaeology* 37:37-88.
- Wilson, D., T. K. Perttula, and M. Walters
2012 Stable Isotope Analysis from a Burial at the Pipe Site (41AN67) in Anderson County, Texas. *Journal of Northeast Texas Archaeology* 38:79-85.