



INDEX OF TEXAS ARCHAEOLOGY

Open Access Gray Literature from the Lone Star State

Volume 2007

Article 32

2007

American Indian Pottery from Historic Period Sites in North Louisiana

Hiram F. Gregory
Unknown

George Avery

Follow this and additional works at: <https://scholarworks.sfasu.edu/ita>



Part of the [American Material Culture Commons](#), [Archaeological Anthropology Commons](#), [Environmental Studies Commons](#), [Other American Studies Commons](#), [Other Arts and Humanities Commons](#), [Other History of Art, Architecture, and Archaeology Commons](#), and the [United States History Commons](#)

Tell us how this article helped you.

This Article is brought to you for free and open access by the Center for Regional Heritage Research at SFA ScholarWorks. It has been accepted for inclusion in Index of Texas Archaeology: Open Access Gray Literature from the Lone Star State by an authorized editor of SFA ScholarWorks. For more information, please contact cdsscholarworks@sfasu.edu.

American Indian Pottery from Historic Period Sites in North Louisiana

Creative Commons License



This work is licensed under a [Creative Commons Attribution-NonCommercial 4.0 International License](https://creativecommons.org/licenses/by-nc/4.0/)

AMERICAN INDIAN POTTERY FROM HISTORIC PERIOD SITES IN NORTH LOUISIANA

H. F. "Pete" Gregory and George Avery

The following is a revised version of a presentation given at the annual meeting of the Louisiana Archaeological Society (LAS) held in Monroe, Louisiana, on March 4, 2006 (Gregory and Avery 2006). The goal of the LAS presentation was to simply show photographs and illustrations of American Indian pottery that dates to the historic period in North Louisiana. Most of the photographs and illustrations are from a manuscript written by H.F. "Pete" Gregory entitled *Los Adaes (16NA16) American Indian Ceramics* (2005). This manuscript was compiled by George Avery as part of the Los Adaes Station Archaeology Program, funded entirely by the Louisiana Division of Archaeology. The LAS presentation was given again at the December 2, 2006 meeting of the East Texas Caddo Research Group (ETCRG) at Stephen F. Austin State University, Nacogdoches, Texas. Revisions to the LAS presentation for the current publication were made as a result of comments from the ETCRG meeting.

It should be noted that we are following R. K. Harris' definition for "Emory Punctated" (Story et al. 1967:136-139). Emory Punctated as defined by Harris at the Gilbert Site (4IRA13) refers to constricted neck vessels with two or more rows of punctates around the neck, and parallel curvilinear lines below the rows of punctates. We describe the sherds with one or more rows of punctations around the neck of a constricted neck vessel that lack incised lines below the row(s) of punctates as simply "Constricted Neck Punctated". As defined by Harris, certain elements of Emory Punctated are similar to those found on Foster Trailed Incised and Winterville Incised, *var. Tunica* vessels (see Girard 2006:28-29). Also, the constricted neck punctated forms are similar to the Tunica Mode described by Jeffrey Brain which occurs on Winterville Incised, *var. Tunica* (Brain 1979:234-235). Brain (1979:229) also illustrates an otherwise plain vessel with a Tunica mode from the Trudeau site (16WF25). The current interpretation of Emory Punctated for Texas materials (e.g. Pertulla 2005:186) differs from the interpretation of Emory Punctated for Los Adaes materials (Gregory 2005). The Emory Punctated at Los Adaes was graciously referred to as "Louisiana Emory" at the ETCRG by a Texas colleague. Clearly, a more thorough investigation and discussion of the "overlap" between Emory Punctated, Foster Trailed Incised, Winterville Incised, and the Tunica Mode is in order, and hopefully the following presentation will spark such investigation and discussion.

The following presentation starts with a distribution table for various historic period pottery types along with their geographic distribution, and the names of the American Indian groups that were in these areas during the historic period. The pottery is presented starting with examples of engraved surface treatment, followed by incised, punctated, punctated-incised, combed, plain, and plain with European influences. It should be noted that many of the "plain" examples exhibit a single incised line or raised area around the neck, which effectively separates the rim and body. Frank Schambach described the upper/lower delineation for decorated Caddo pottery as the "Rule of Two."

The "Rule of Two" also seems to be present on wares that have no other surface design elements except for the upper/lower delineation in the form of an incised line or raised area. Such vessels are described here as "Rule of Two" Plain, which are present at Los Adaes, the Trudeau site (16WF25) (Brain 1979:229-231), and the Procello site (16DS212) (Espey, Huston & Associates 1983: Figure 26a). Finally, plain wares with European influences are depicted, such as the pitcher, plate, and porringer forms, and the foot ring attribute.

We wish to thank the following for their help:

Jeff Girard, NW Louisiana Regional Archaeologist
Louisiana Division of Archaeology

Bobby Gonzalez, NAGPRA Coordinator
Caddo Tribe of Oklahoma

Earl Barbry, Jr., NAGPRA Coordinator
Tunica-Biloxi Tribe of Louisiana

Gary Hardamon, NSU Supervisor of Photography
under contract with the
NW Louisiana Regional Archaeology Program

Shelly Witten and Josh Martin, NSU Anthropology Majors,
Artifact Illustrators employed by the
Los Adaes Station Archaeology Program

References Cited

- Brain, Jeffrey P.
1979 *Tunica Treasure*. The Peabody Museum, Harvard University, Cambridge, Massachusetts, and the Peabody Museum of Salem, Salem, Massachusetts.
- Espey, Huston, & Associates
1983 *The Archaeological Investigation of the Louis Procello Site, 16DS212, DeSoto Parish, Louisiana*. Document No. 82360, EH&A Job No. 1731. Espey, Huston, & Associates, Austin, Texas.
- Girard, Jeffrey S.
2006 *Regional Archaeology Program. Management Unit 1. Seventeenth Annual Report 2006*. Northwestern State University of Louisiana, Natchitoches.

Gregory, H.F.

- 2005 *Los Adaes (16NA16) American Indian Ceramics*. Manuscript compiled by George Avery, Los Adaes Station Archaeologist. Dept. of Social Sciences, Northwestern State University of Louisiana, Natchitoches.

Gregory, H.F. "Pete" and George Avery

- 2006 Using American Indian Pottery to Identify Historic Period Sites in Northwest Louisiana. Presented at the Annual Meeting of the Louisiana Archaeological Society, Monroe, Louisiana, March 4, 2006.

Perttula, Timothy K.

- 2005 Winston's Mounds and Shawnee Town: Mound Explorations by the Bureau of Ethnology in Texas, 1882-1884. *Bulletin of the Texas Archeological Society* 76:183-188.

Story, Dee Ann; Byron Barber, Estalee Barber, Evelyn Cobb, Hershel Cobb, Robert Coleman, Kathleen Gilmore, R.K. Harris, and Norma Hoffrichter

- 1967 Pottery Vessels. *Bulletin of the Texas Archeological Society* 37:112-188.

Webb, Clarence H.

- 1945 A Second Historic Caddo site at Natchitoches, Louisiana. *Bulletin of the Texas Archeological and Paleontological Society* 16:52-83.

Table 1. Distribution of Historic Period American Indian Pottery in North Louisiana

	Natchitoches/NW	Ouachita Area	Lower Red River
	<i>Tribal Groups</i>	<i>Tribal Groups</i>	<i>Tribal Groups</i>
Pottery Type/Description	Natchitoches, Adaes Yatasi, Natchez Choctaw, Apalachee Coushatta	Ouachita Koroa Choctaw (later) Pascagoula (later)	Avoyel Tunica-Biloxi
<i>Keno Trilled</i>	X	X	X (rare)
<i>Natchitoches, Engraved</i>	X	X	X
<i>Patton Engraved</i>	X (rare)	0	0
<i>Emory Punctated</i>	X	0	0
<i>Ebarb Incised</i>	X	0	0
<i>Fatherland Incised</i>	X	X	X
<i>Chickachae Combed</i>	X	0	0
Coushatta "Pie Edge" rims	X	0	0
<i>Zimmerman Plain</i>	X	0	0
Constricted Neck Punctated	X	0	X
"Rule of Two" Plain	X	X	X
Plain with European Influences	X	0	X

Williamson Museum

Natchitoches Engraved



Gary Hardamon



Fish Hatchery 16NA9

Natchitoches Engraved

*Williamson Museum
(Webb 1945)*



Gary Hardamon



Lawton Gin 16NA13

Williamson Museum

*Lawton Gin
16NA13*

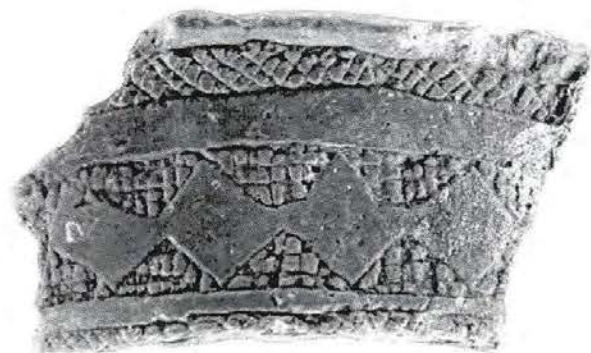
Gary Hardamon

Natchitoches Engraved

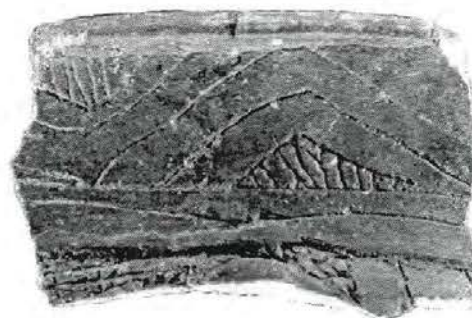


Natchitoches Engraved

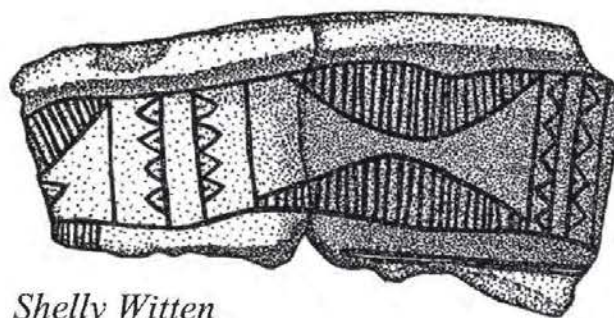
(Gregory 2005 ms.)



31.8 cm



18.0 cm



Shelly Witten

8.3 cm



shell tempered

Los Adaes 16NA16

Natchitoches Engraved

(Gregory 2005 ms.)



Red slipped
shell tempered

Los Adaes 16NA16

Natchitoches Engraved

(Gregory 2005 ms.)



Red slipped

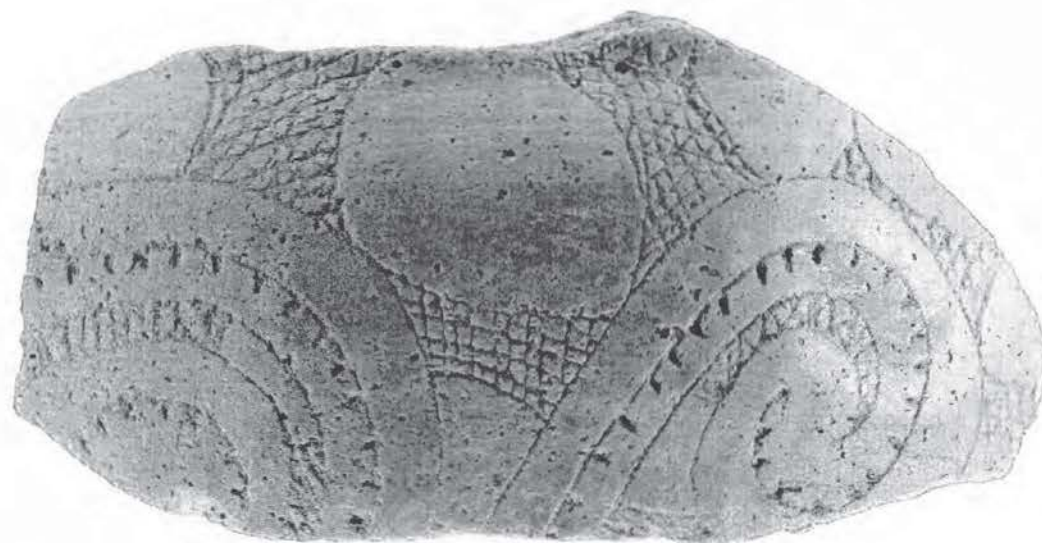


shell tempered

Los Adaes 16NA16

Natchitoches Engraved

(Gregory 2005 ms.)



Red slipped

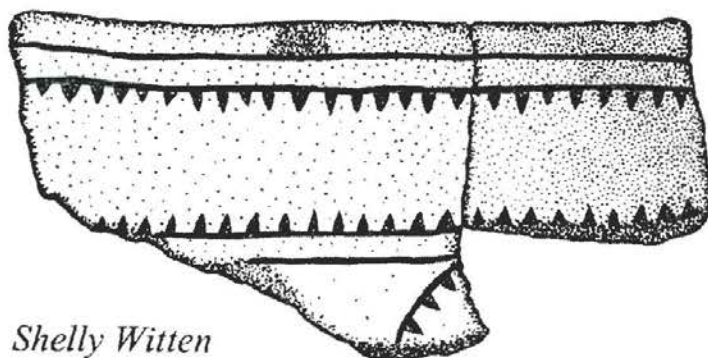
shell tempered

Los Adaes 16NA16



Patton Engraved

(Gregory 2005 ms.)



Shelly Witten



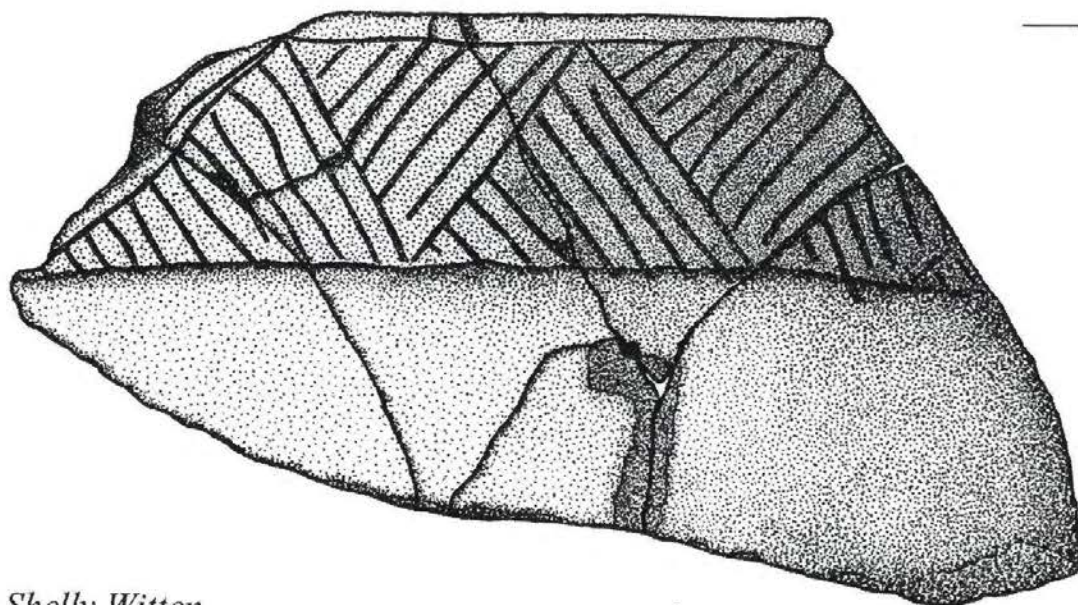
13.52 cm



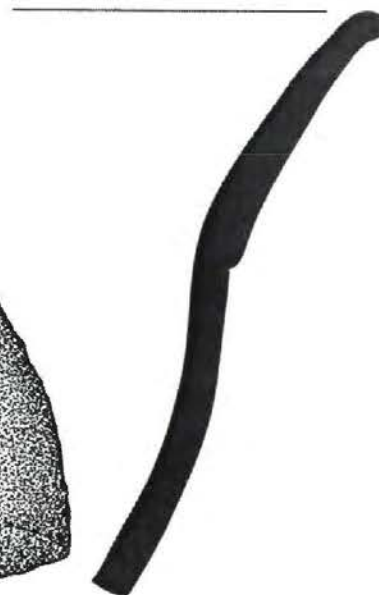
Los Adaes 16NA16

Ebarb Incised

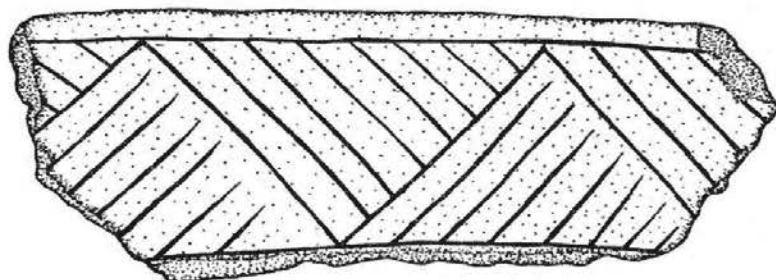
(Gregory 2005 ms.)



26.0 cm



Shelly Witten



23.4 cm



Shelly Witten

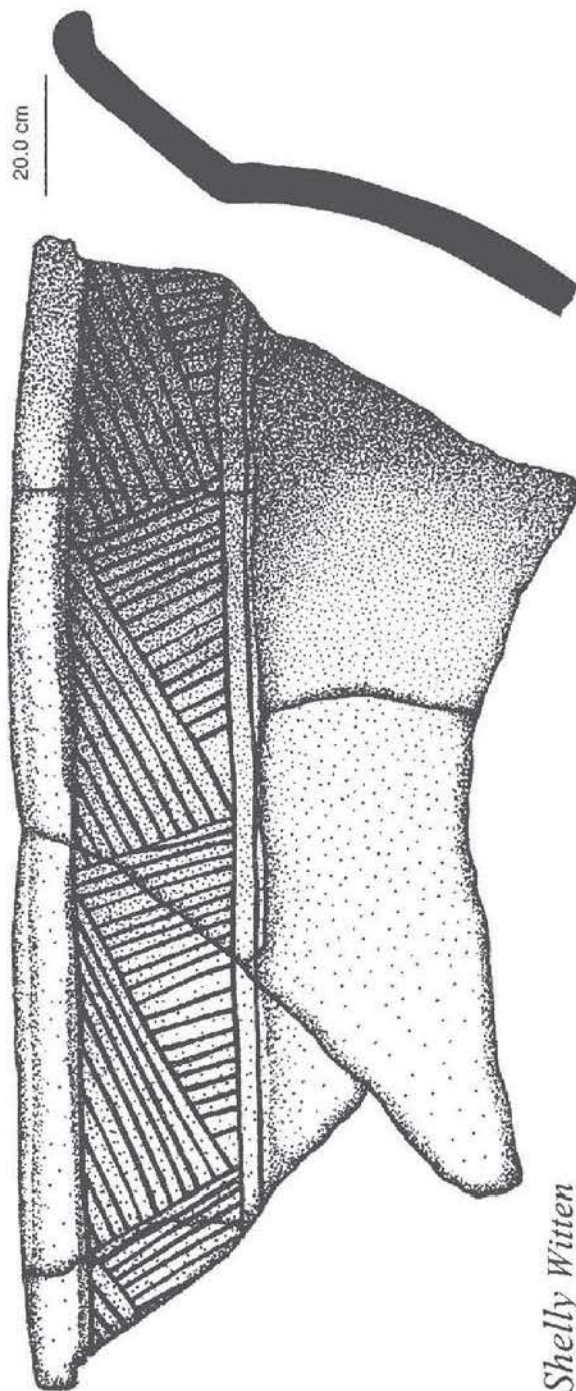


shell and bone tempered

Los Adaes 16NA16

(Gregory 2005 ms.)

Ebarb Incised



Shelly Witten

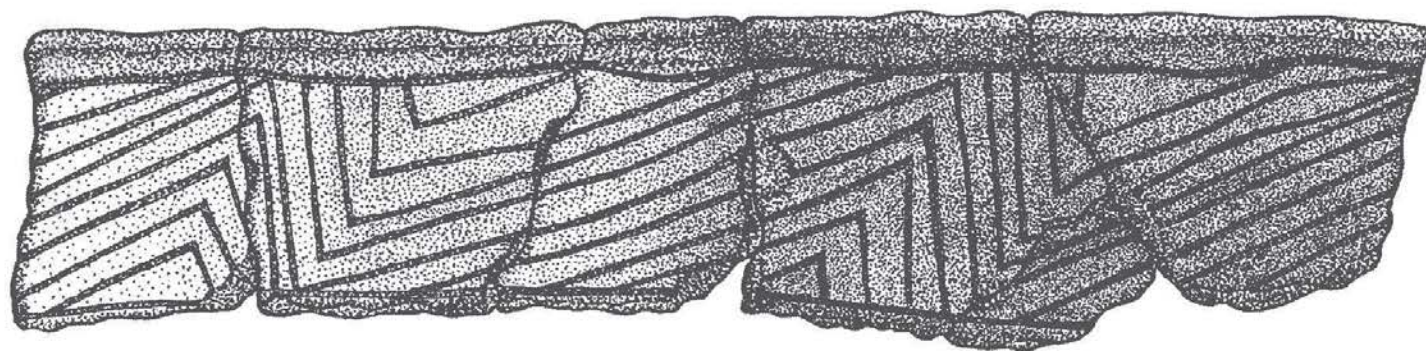


shell and bone tempered

Los Adaes 16NA16

Ebarb Incised

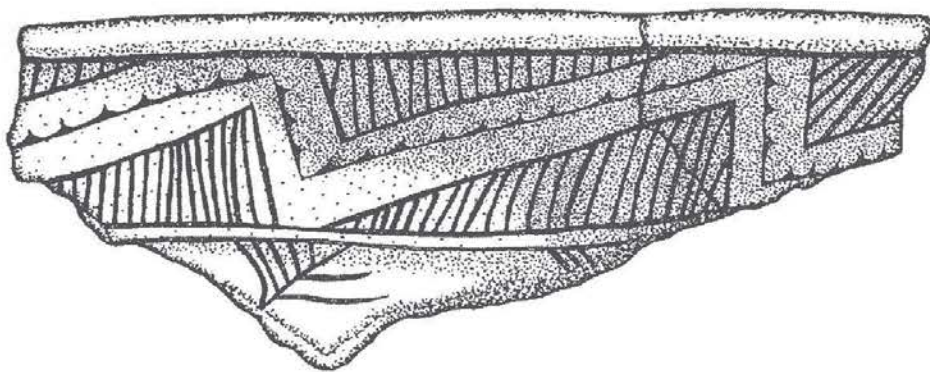
(Gregory 2005 ms.)



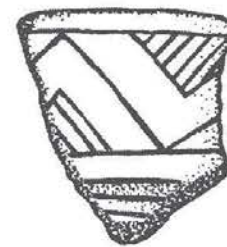
25.8 cm



Shelly Witten



22.1 cm



Shelly Witten

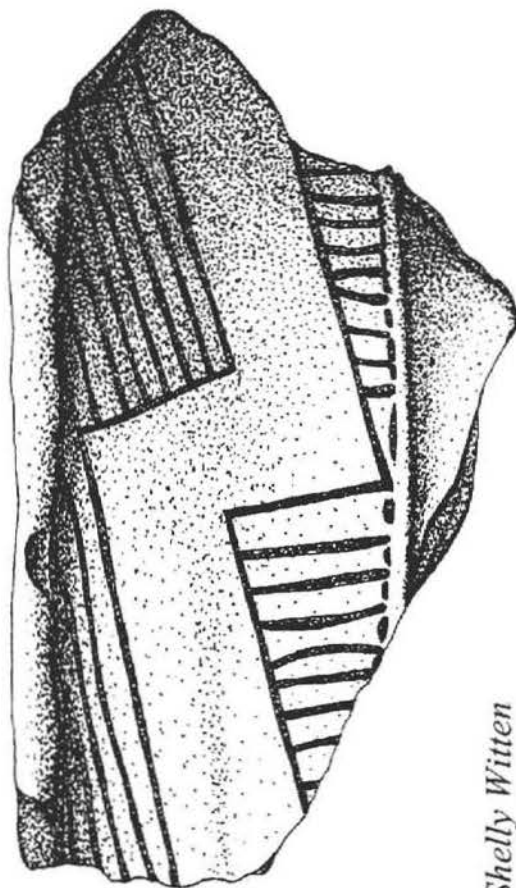
Shelly Witten



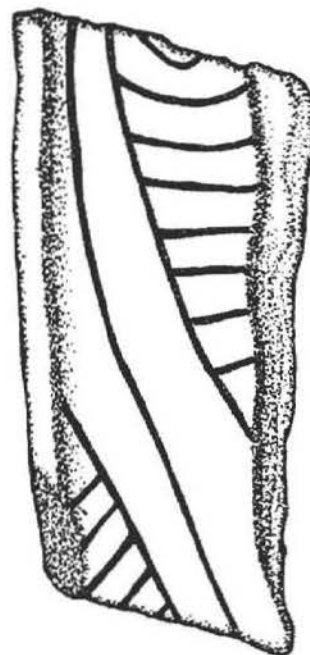
Los Adaes 16NA16

(Gregory 2005 ms.)

Ebarb Incised



Shelly Witten



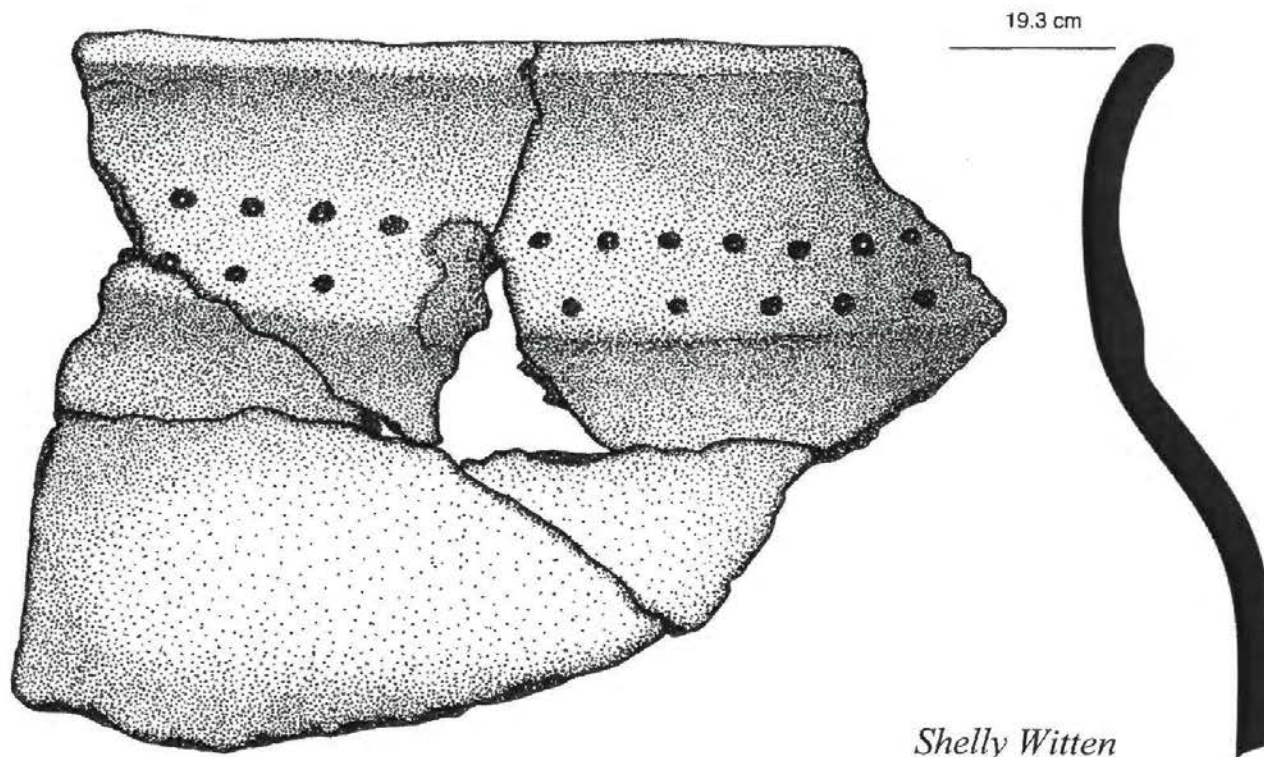
Shelly Witten



Los Adaes 16NA16

Constricted Neck Punctated

(Gregory 2005 ms.)

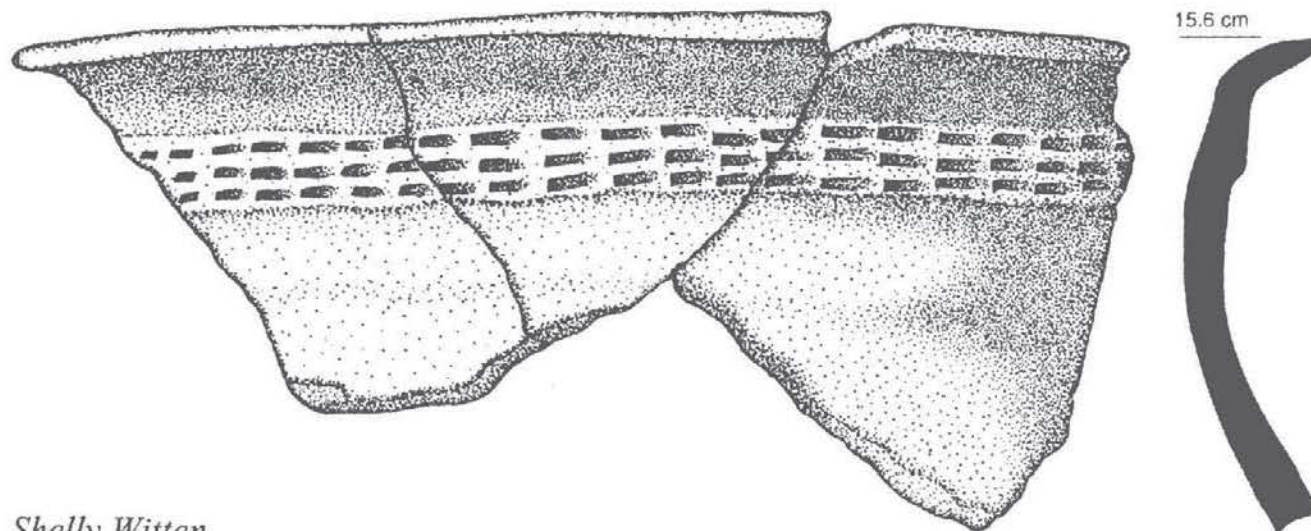


shell tempered

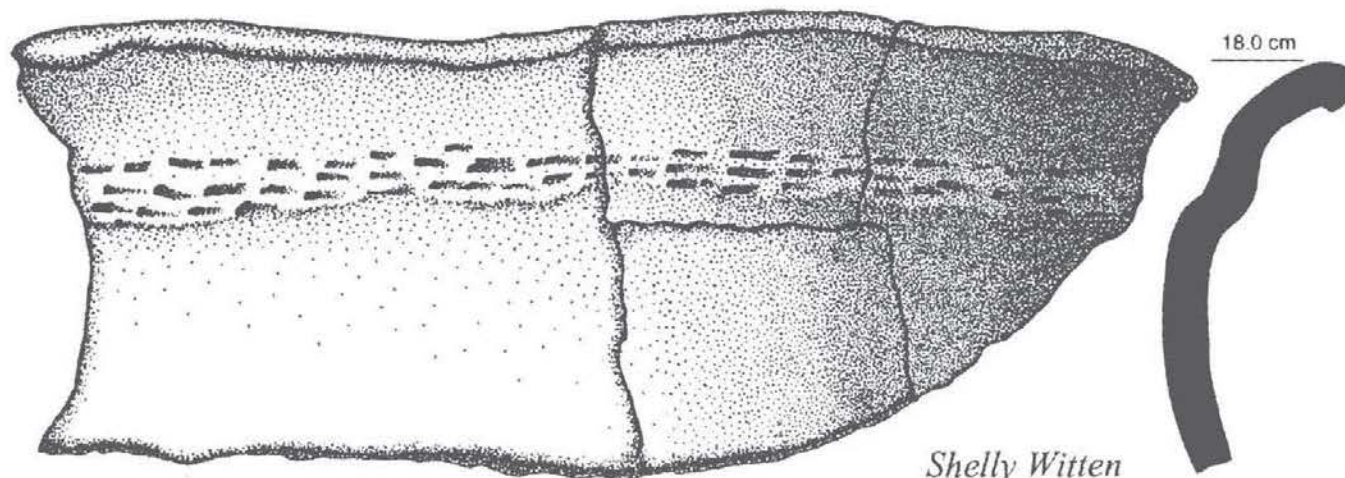
Los Adaes 16NA16

Constricted Neck Punctated

(Gregory 2005 ms.)



Shelly Witten



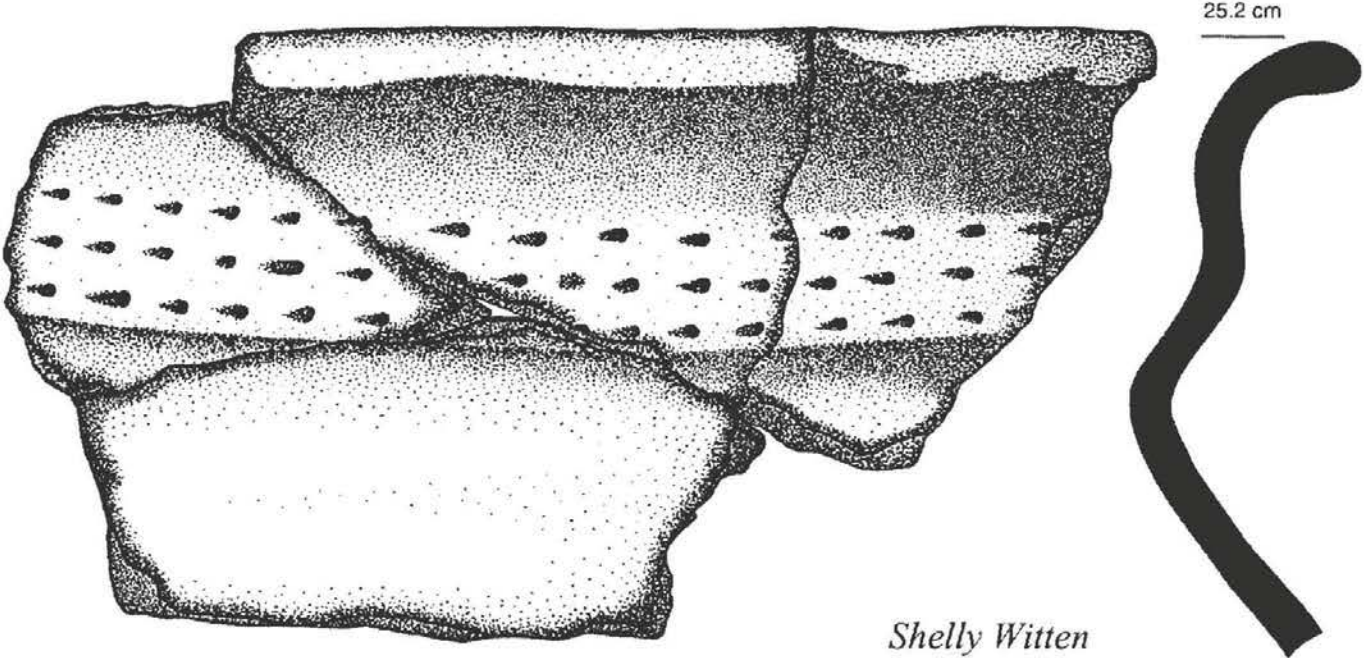
Shelly Witten



Los Adaes 16NA16

Constricted Neck Punctated

(Gregory 2005 ms.)

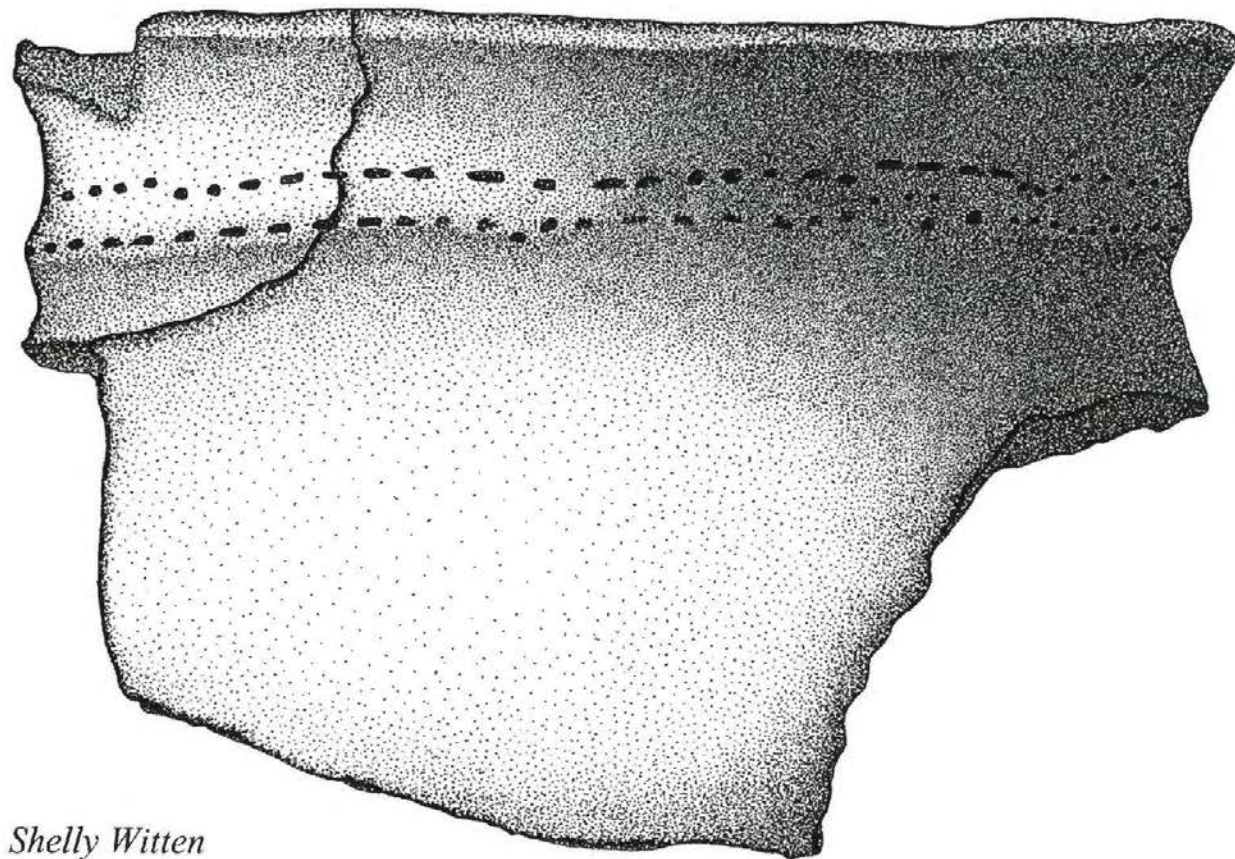


shell tempered

Los Adaes 16NA16

Constricted Neck Punctated

(Gregory 2005 ms.)



17.2 cm



Shelly Witten

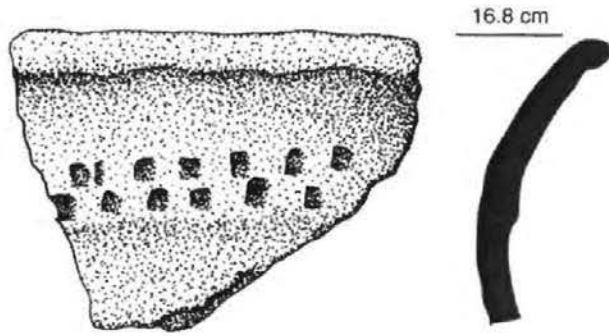


shell tempered

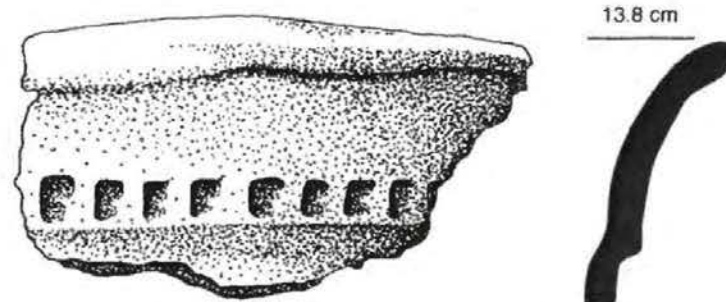
Los Adaes 16NA16

Constricted Neck Punctated

(Gregory 2005 ms.)



Shelly Witten



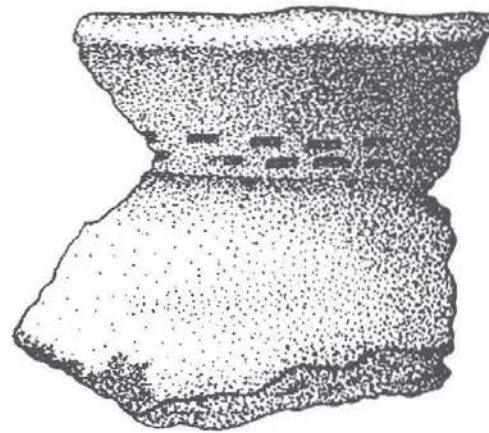
Shelly Witten



Los Adaes 16NA16

Constricted Neck Punctated

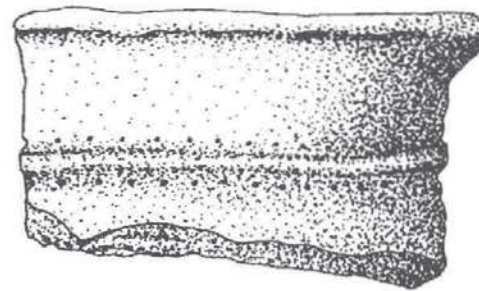
(Gregory 2005 ms.)



10.5 cm



Shelly Witten



8.5 cm



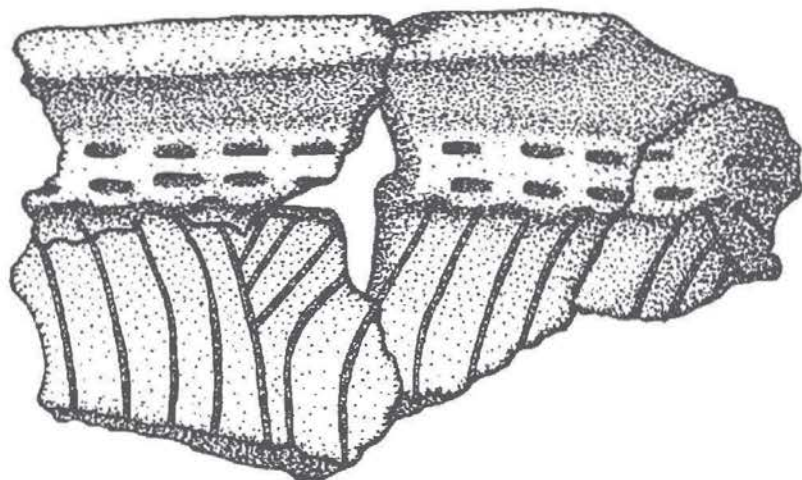
Shelly Witten



Los Adaes 16NA16

Emory Punctated

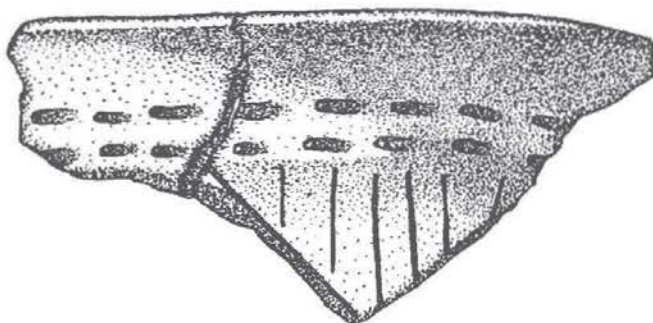
(Gregory 2005 ms.)



18.7 cm



Shelly Witten



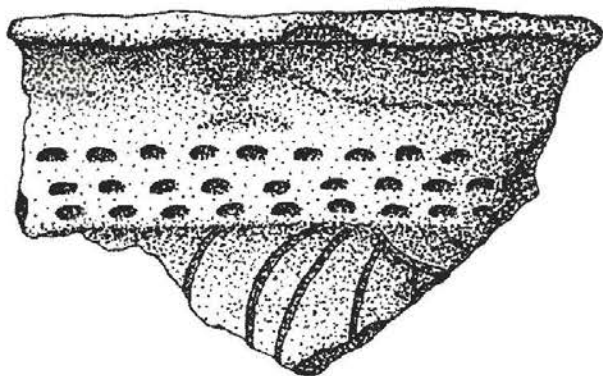
Shelly Witten



Los Adaes 16NA16

Emory Punctated

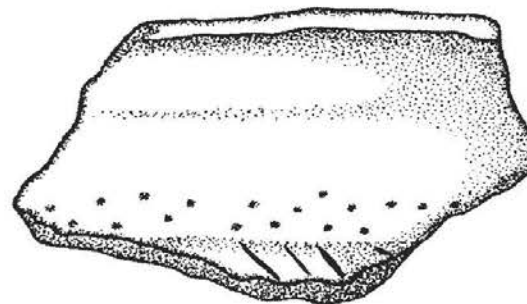
(Gregory 2005 ms.)



8.4 cm



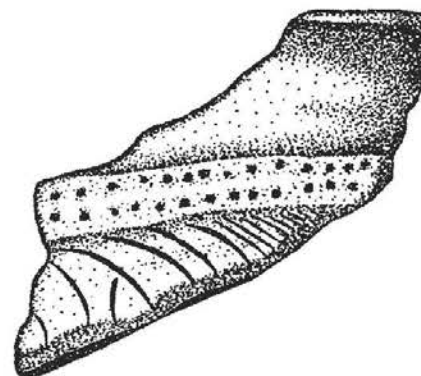
Shelly Witten



13.0 cm



Shelly Witten



indeterminate



Shelly Witten

Los Adaes 16NA16



Williamson Museum

Emory Punctated



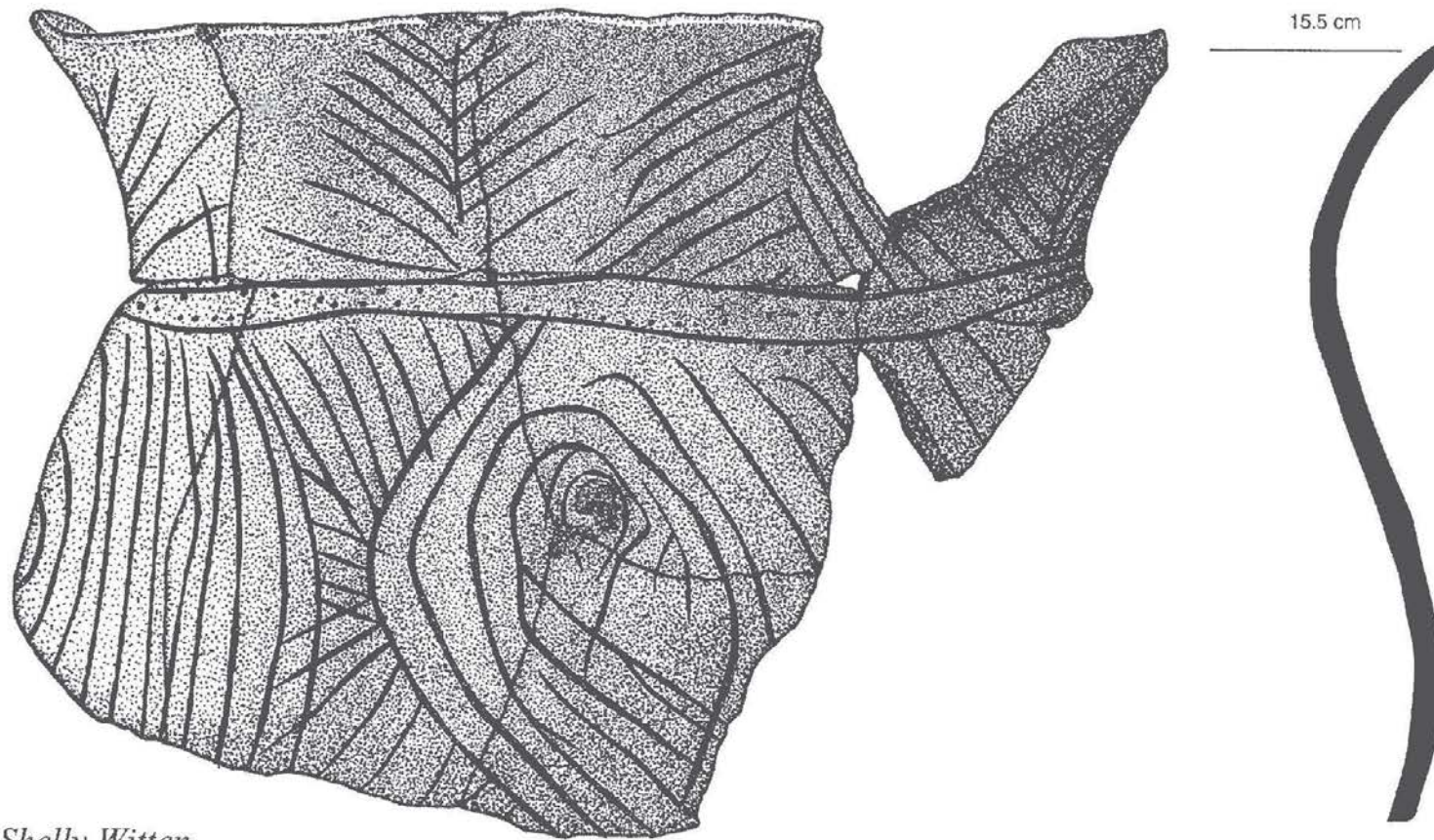
Gary Hardamon

Southern Compress 16NA14



Emory Punctated

(Gregory 2005 ms.)



Shelly Witten



Los Adaes 16NA16

Fatherland Incised

Williamson Museum



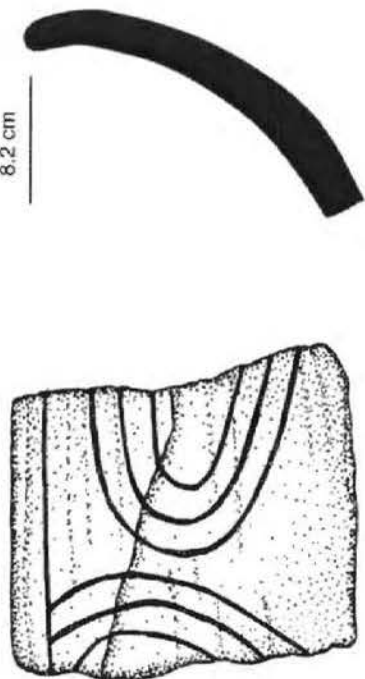
Gary Hardamon



Etheridge, Caldwell Parish

Fatherland Incised

(Gregory 2005 ms.)



Shelly Witten



Los Adaes 16NA16

(Gregory 2005 ms.)

Chickachae Combed



Los Adaes 16NA16

“Rule of Two” Plain Wares

(Gregory 2005 ms.)

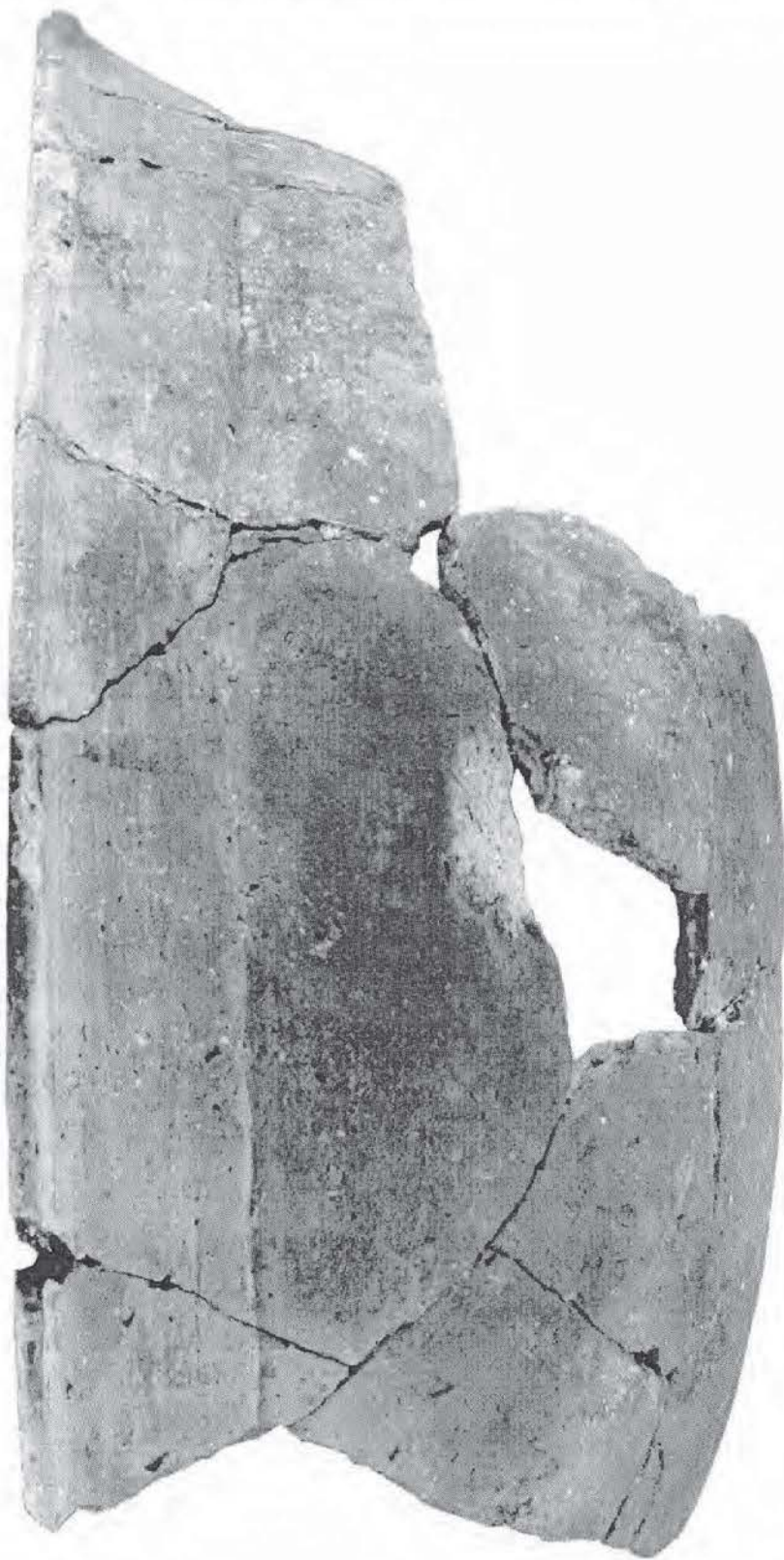


shell tempered

Los Adaes 16NA16

(Gregory 2005 ms.)

“Rule of Two” Plain Wares



26.4 cm



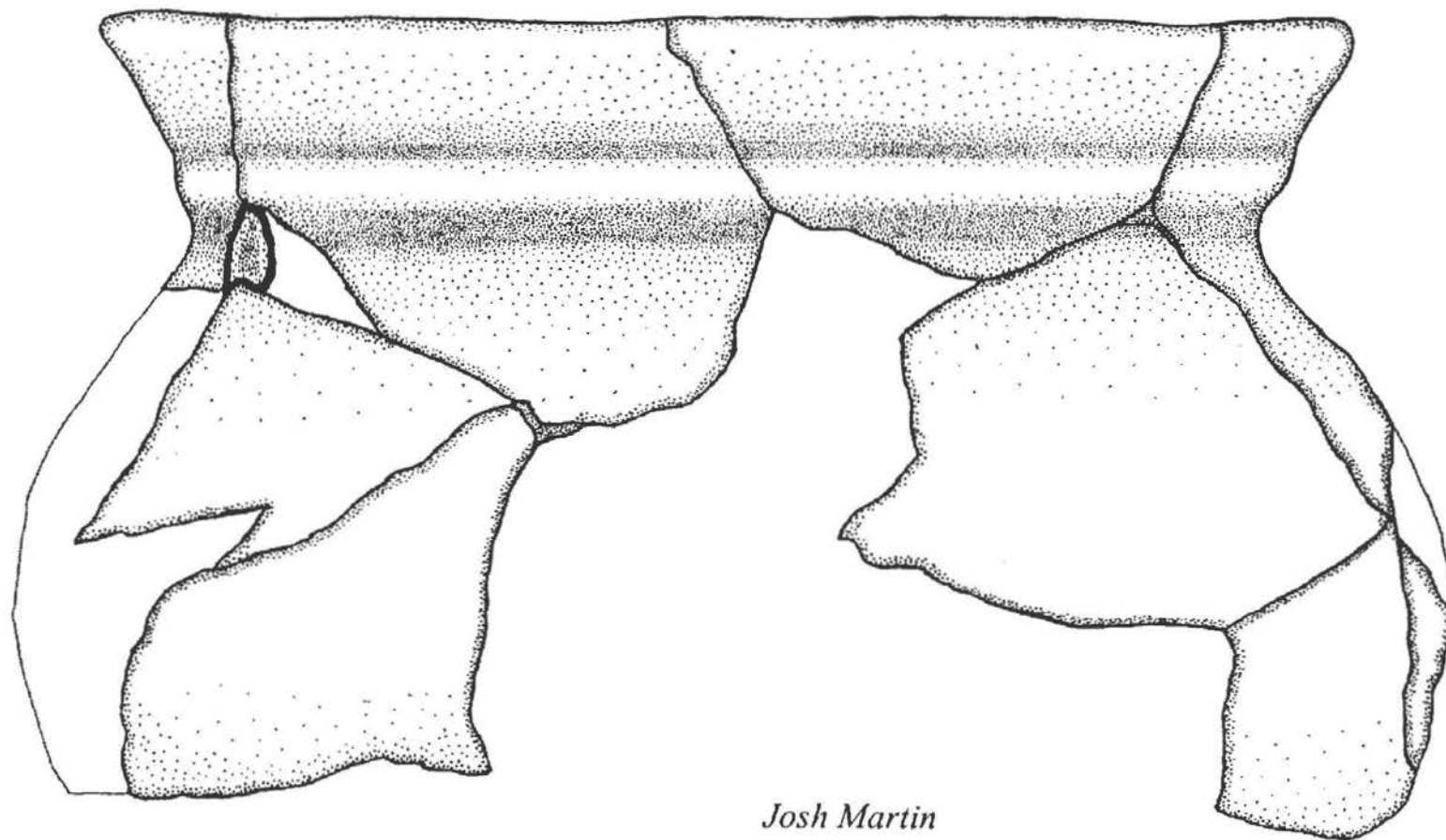
shell tempered

Los Adaes 16NA16



“Rule of Two” Plain Wares

(Gregory 2005 ms.)



Josh Martin

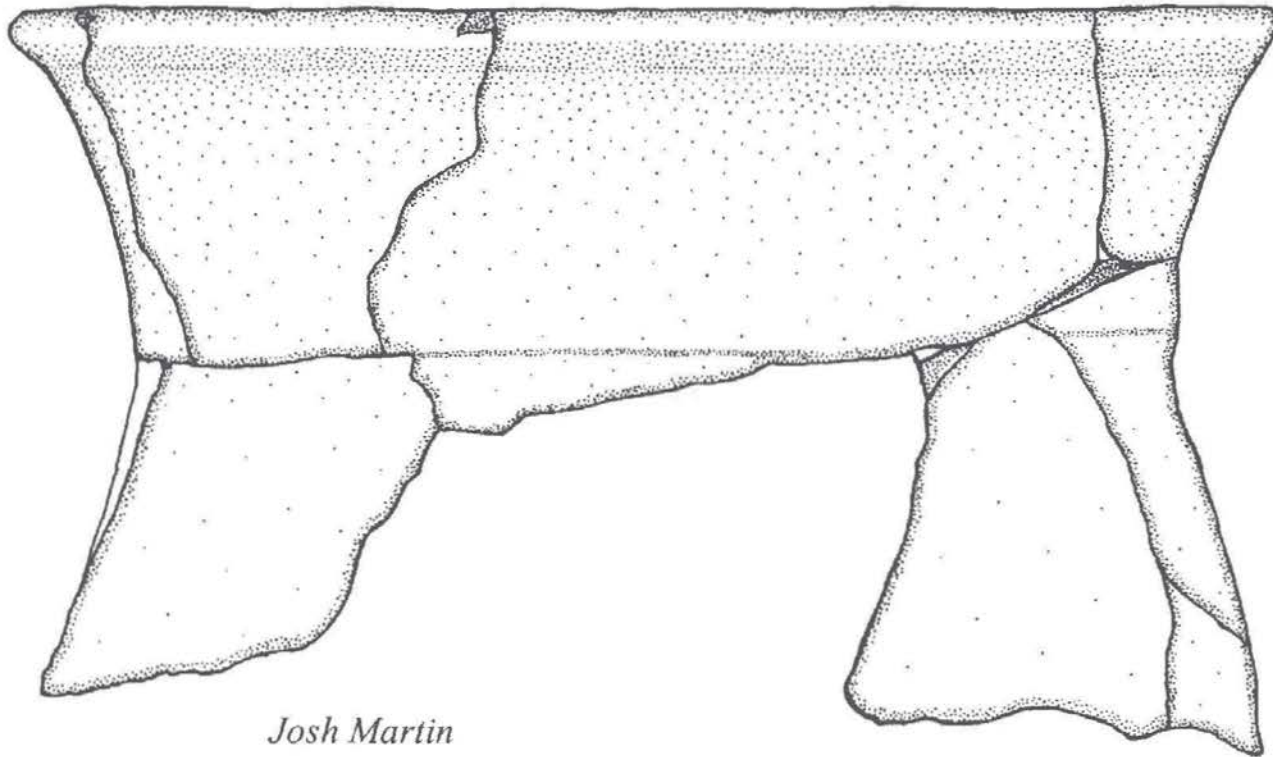


shell tempered

Los Adaes 16NA16

“Rule of Two” Plain Wares

(Gregory 2005 ms.)



Josh Martin

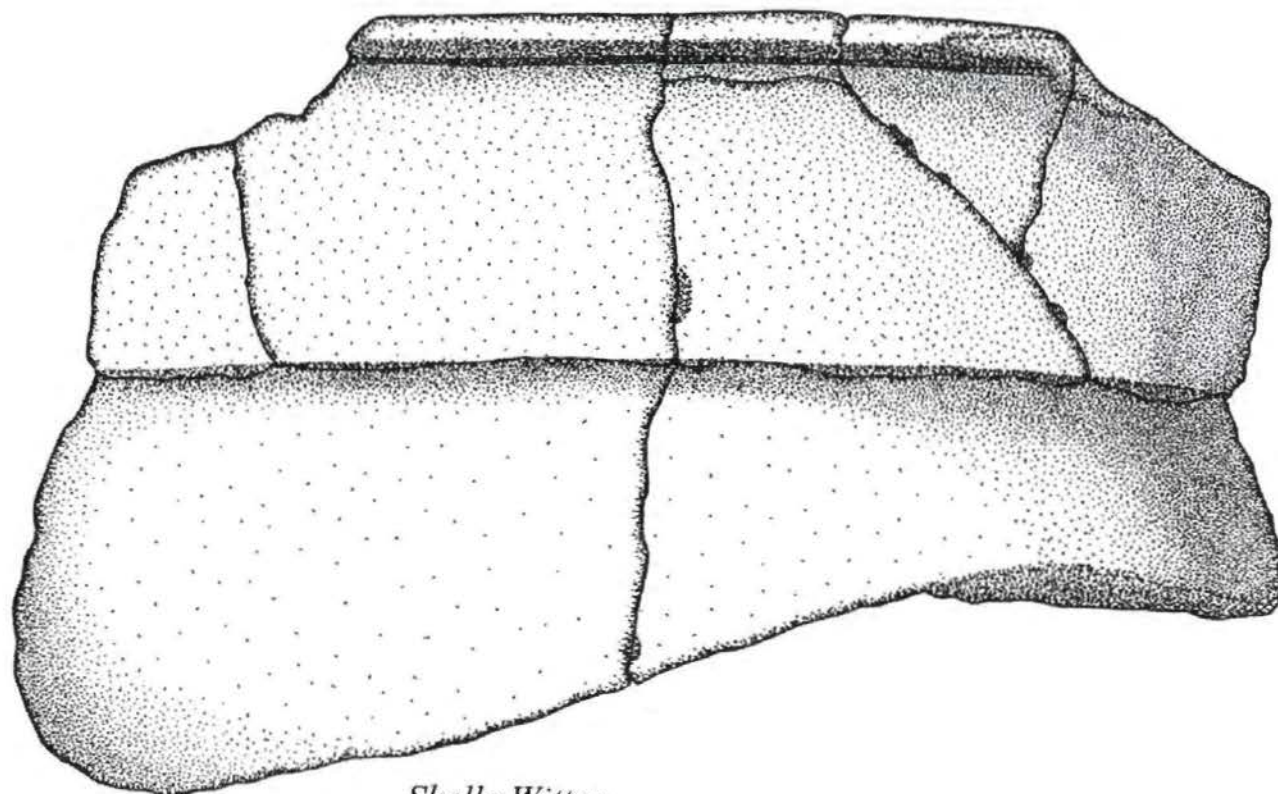


shell tempered

Los Adaes 16NA16

“Rule of Two” Plain Wares

(Gregory 2005 ms.)



Shelly Witten

23.3 cm

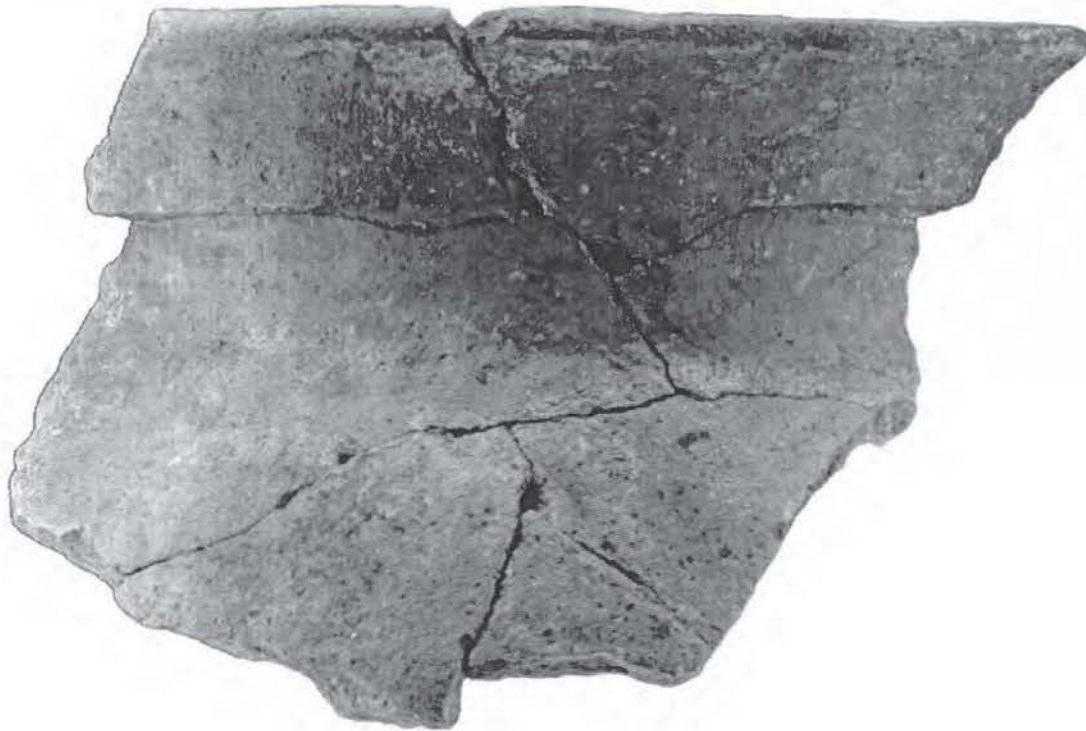


shell tempered

Los Adaes 16NA16

“Rule of Two” Plain Wares

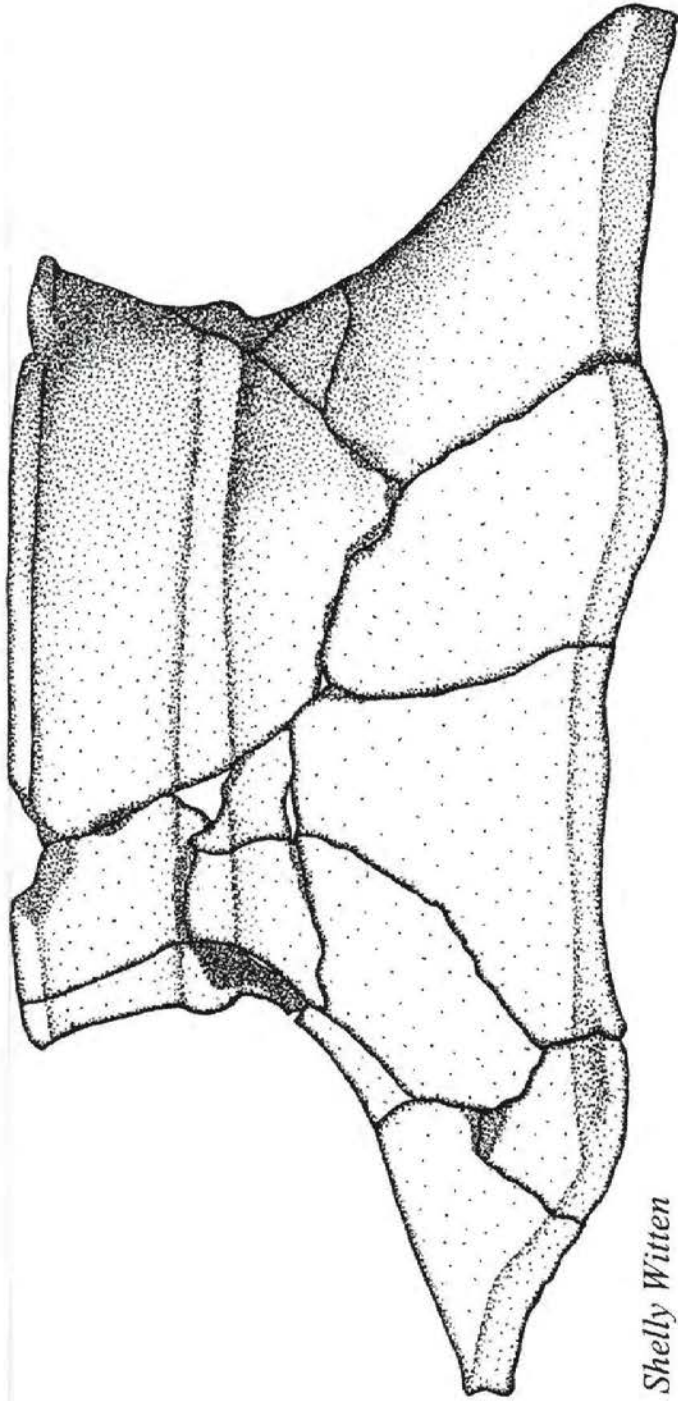
(Gregory 2005 ms.)



shell tempered

Los Adaes 16NA16

“Rule of Two” Plain Wares
(Gregory 2005 ms.)



Shelly Witten



shell tempered

Los Adaes 16NA16

Plain Wares

*Williamson Museum
Epsey Huston & Associates 1983*



Gary Hardamon



Procello 16DS212

Williamson Museum

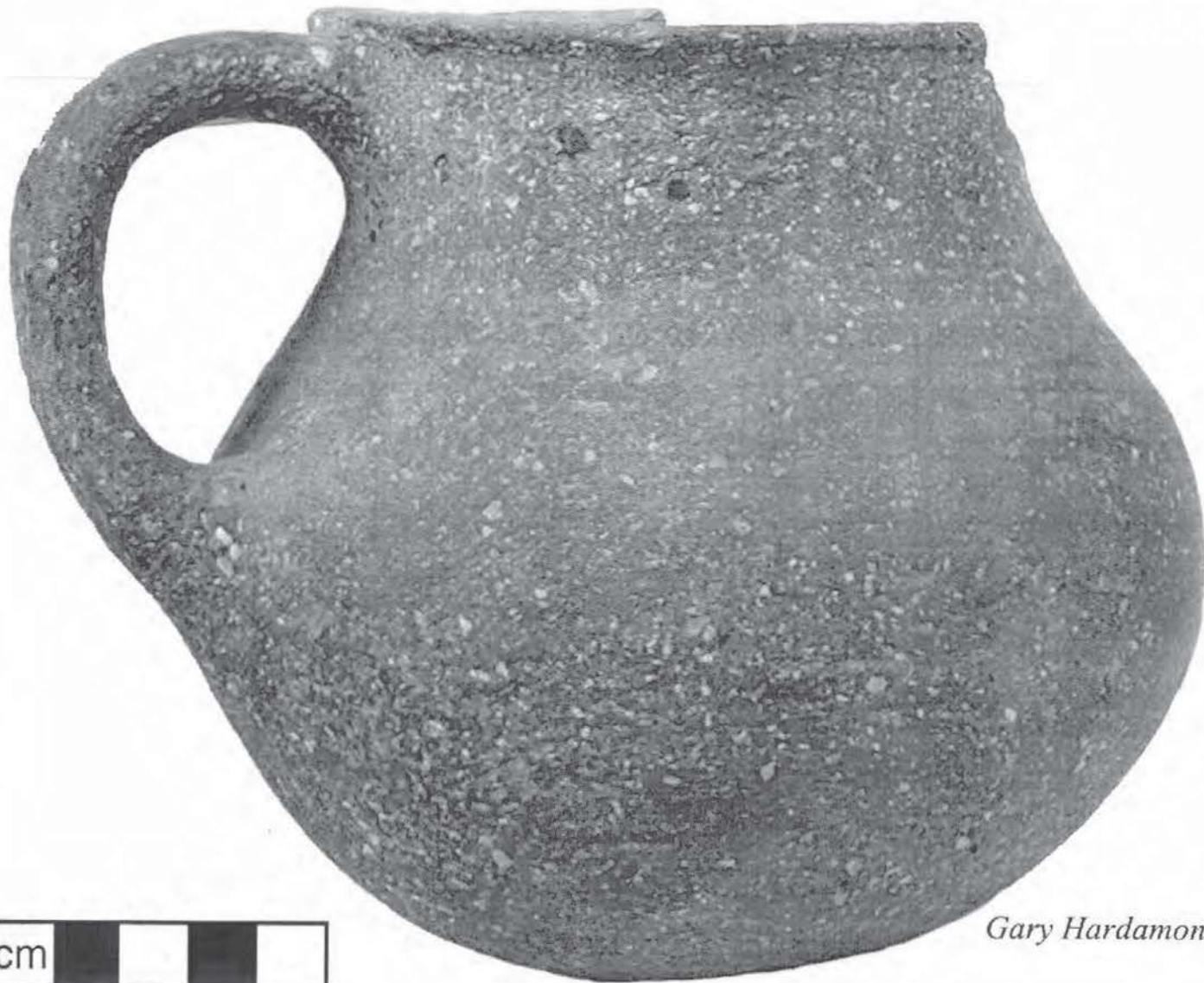
Zimmerman Plain



Coulee des Grues 16AV21



Plain Wares with European Influences



(pitcher form)

Gary Hardamon

*Payne
Plantation,
Natchitoches
Parish*

(Gregory 2005 ms.)

Plain Wares with European Influences



14.8 cm



(pitcher form)

Los Adaes 16NA16



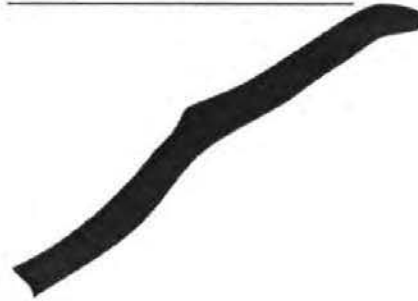
Plain Wares with European Influences *(Gregory 2005 ms.)*



26.5 cm



20.0 cm



(brimmed bowl form)

Los Adaes 16NA16



(Gregory 2005 ms.)

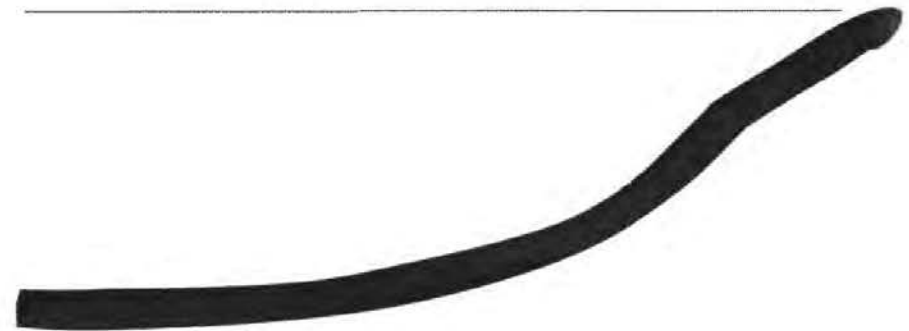
Plain Wares with European Influences



Los Adaes 16NA16

20.5 cm

(brimmed bowl form)



(Gregory 2005 ms.)

Plain Wares with European Influences

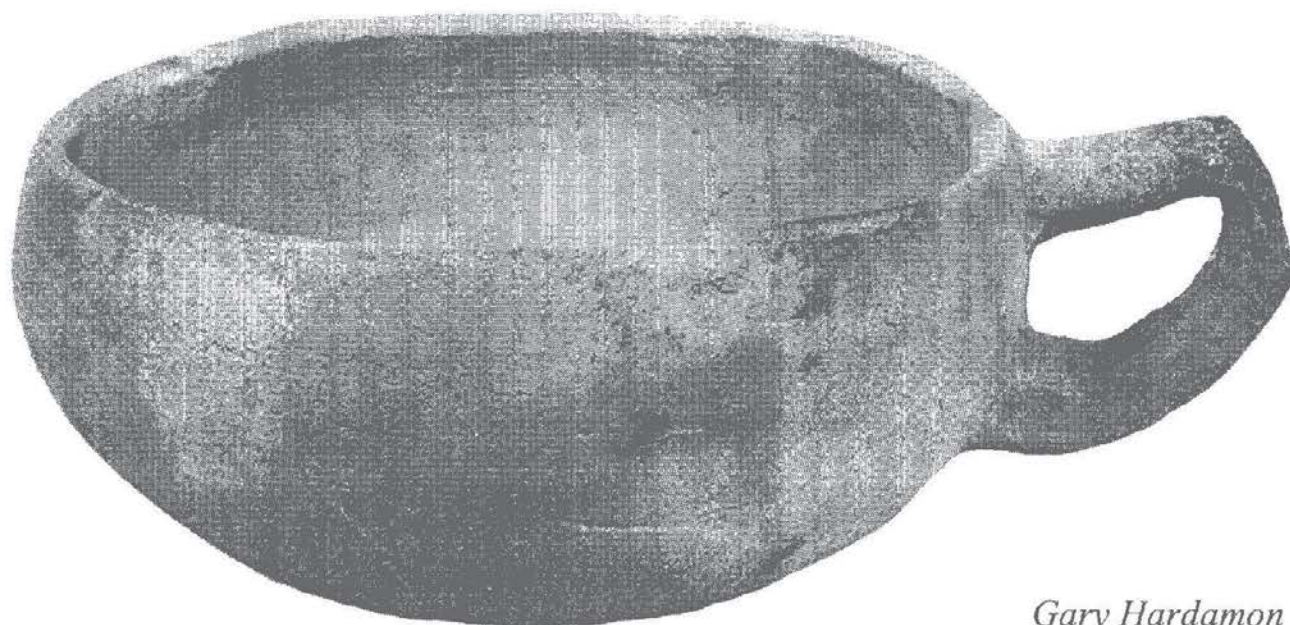


(basal sherd with foot ring)



Los Adaes 16NA16

Plain Wares with European Influences



Gary Hardamon

(porringer form)



Colfax Ferry 16NA15