




2017

## Caddo Ceramic Vessel Database from Sites in Texas, Louisiana, Oklahoma, and Arkansas

Timothy K. Perttula

*Center for Regional Heritage Research, Stephen F. Austin State University*

Follow this and additional works at: <https://scholarworks.sfasu.edu/ita>

 Part of the [American Material Culture Commons](#), [Archaeological Anthropology Commons](#), [Environmental Studies Commons](#), [Other American Studies Commons](#), [Other Arts and Humanities Commons](#), [Other History of Art, Architecture, and Archaeology Commons](#), and the [United States History Commons](#)

Tell us how this article helped you.

### Repository Citation

Perttula, Timothy K. (2017) "Caddo Ceramic Vessel Database from Sites in Texas, Louisiana, Oklahoma, and Arkansas," *Index of Texas Archaeology: Open Access Gray Literature from the Lone Star State*: Vol. 2017 , Article 10. <https://doi.org/10.21112/ita.2017.1.10>  
ISSN: 2475-9333

Available at: <https://scholarworks.sfasu.edu/ita/vol2017/iss1/10>

This Article is brought to you for free and open access by SFA ScholarWorks. It has been accepted for inclusion in Index of Texas Archaeology: Open Access Gray Literature from the Lone Star State by an authorized editor of SFA ScholarWorks. For more information, please contact [cdsscholarworks@sfasu.edu](mailto:cdsscholarworks@sfasu.edu).

---

# Caddo Ceramic Vessel Database from Sites in Texas, Louisiana, Oklahoma, and Arkansas

## Creative Commons License



This work is licensed under a [Creative Commons Attribution 4.0 License](https://creativecommons.org/licenses/by/4.0/).

---

## **Caddo Ceramic Vessel Database from Sites in Texas, Louisiana, Oklahoma, and Arkansas**

*Timothy K. Perttula*

---

This compilation of more than 9310 ancestral Caddo ceramic vessels is from 356 sites and collections primarily in Texas (i.e., about 87 percent of the vessels and 88 percent of the sites and collections), although there are significant collections in this compilation from sites in Arkansas, Louisiana, and Oklahoma. The ceramic vessel database has been compiled from available published and unpublished articles, monographs, and technical reports, as well as ceramic vessel inventory forms (when available) on file at the Texas Archeological Research Laboratory.

Many of these vessels have been documented over the last 10 years using a standard analysis protocol. Nevertheless, it is expected that not all known vessel collections have been included in this database from any one state in the southern Caddo area (most assuredly not from southwestern Arkansas, where McKinnon [2016:31] had noted that he has a GIS database of 4199 vessels from 187 sites that are mostly in Arkansas). If and when other vessel collections not presently included herein are identified, every effort will be made in the future to add them into the ceramic vessel database so that it is as comprehensive a listing of vessels as possible.

Each individual vessel entry includes the following: (1) site trinomial, if known, or collection name (along with a county location, if no trinomial is available); (2) vessel and/or burial number, or other accession/catalog information; (3) vessel form; (4) temper, if known; (5) type, if known; (6) variety, if known; (7) decorative method or decorative elements for vessels of unknown type-variety, plus other pertinent information on vessels; and (8) estimated age of the sites that have vessels from burial and/or habitation features.

The majority of the site and collection vessel assemblages in the data base—current as of August 14, 2016—have less than 30 ceramic vessels (Tables 1-4). However, there are several sites with substantial vessel assemblages in each of the four states within the southern Caddo area, including, for Texas: Tuck Carpenter (41CP5, n=468 vessels), Johns (41CP12, n=257 vessels), H. R. Taylor (41HS3, n=427 vessels), Holdeman (41RR11, n=259 vessels), Sam Kaufman (41RR16, n=414 vessels), Henry Spencer 41UR315, n=236 vessels); the Belcher site (16CD13, n=190 vessels) in Louisiana; the Roden site (34MC215, n=110 vessels) in Oklahoma; and the Battle (3LA1, n=163 vessels) and Crenshaw (3MI6, n=252 vessels) sites in southwest Arkansas. Ceramic vessels dating from all periods in Caddo native history are present in the database (i.e., Formative Caddo, ca. A.D. 800-1000; Early Caddo, ca. A.D. 1000-1200; Middle Caddo, ca. A.D. 1200-1400; Late Caddo, ca. A.D. 1400-1680; and Historic Caddo, ca. A.D. 1680-1850s), but ceramic vessels dating to the Late Caddo period are predominant in each of the vessel assemblages from the four states. In particular, these are vessels from assemblages belonging to the Belcher phase, Frankston phase, McCurtain phase, Salt Lick, Texarkana, and Titus phases that are found along the Red River and in the Neches-Angelina, and Big Cypress-Sabine drainage basins in East Texas (Figure 1).

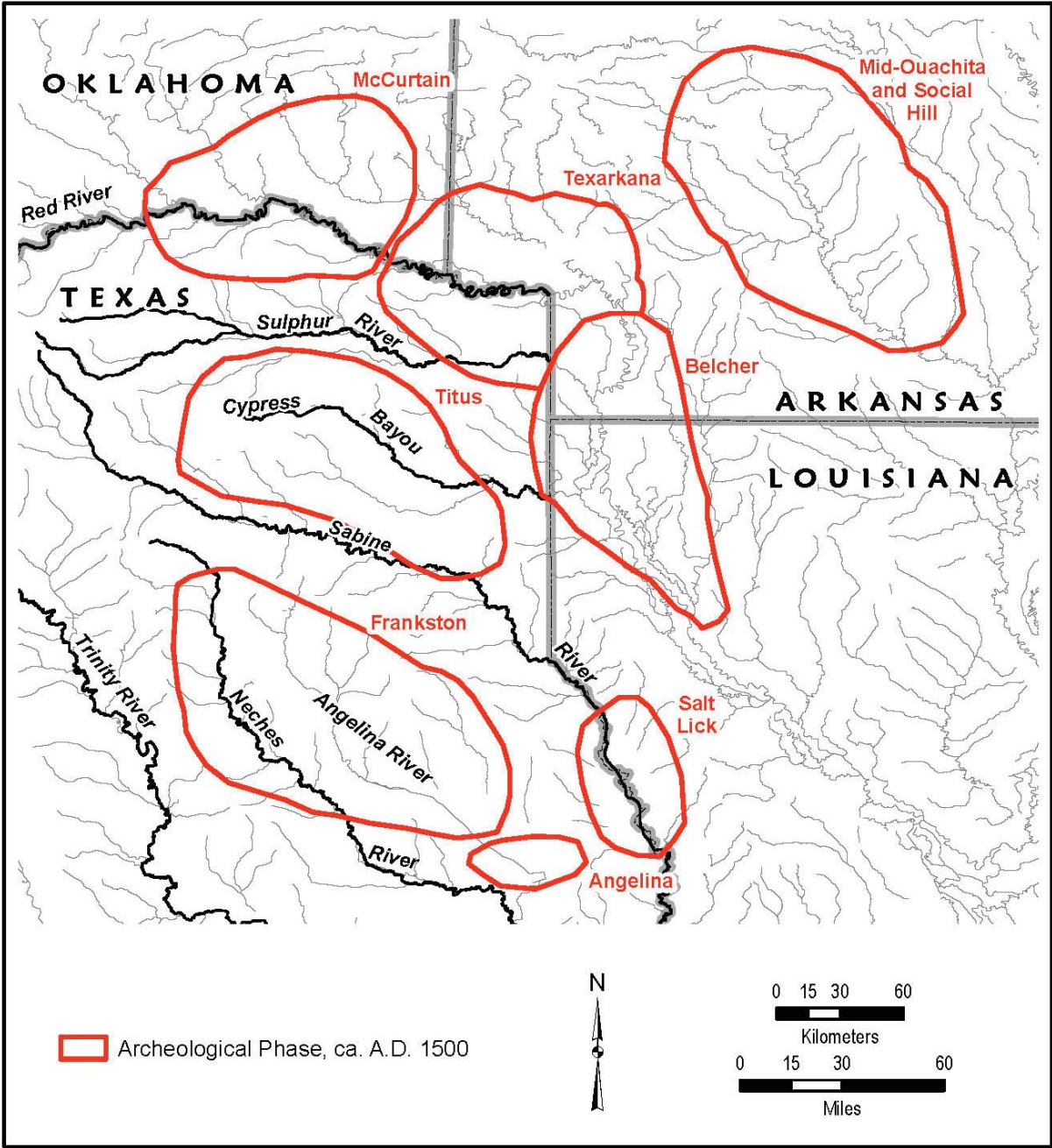


Figure 1. Late Caddo period phases in southwest Arkansas, northwest Louisiana, southeast Oklahoma, and East Texas. Figure prepared by Sandra Hannum.

**Table 1. East Texas sites/collections with Caddo ceramic vessels.**

Site (with trinomial) or Collection (by County)	No. of vessels in database
41AG66	3
41AN1	33
41AN2	17
41AN13	13
41AN14	14
41AN16	1
41AN18	2
41AN21	1
41AN26	25
41AN32	23
41AN34	19
41AN38	31
41AN39	9
41AN44	12
41AN48	3
41AN53	4
41AN54	15
41AN56	1
41AN57	3
41AN67	1
41AN184	4
41AN201/41HE7	8
McSpadden	3
NMNH	4
41BW1	1
41BW2	12
41BW3	69
41BW4	149
41BW5	13
41BW8	29
41BW14	11
41BW33	6
41BW65	1
BW119	2
BW171	1
BW512	4
Winston Md. (Bowie Co.)	4
Boyce Smith Collection (Bowie Co.)	1
41CE4	24
41CE6	8
41CE12	55
41CE14-Cemetery 1	106
41CE14-Cemetery 2	12

**Table 1. East Texas sites/collections with Caddo ceramic vessels, cont.**

Site (with trinomial) or Collection (by County)	No. of vessels in database
41CE15	3
41CE17	35
41CE19	47
41CE20	1
41CE23	8
41CE25	27
41CE43	1
41CE421	1
Mud Creek	4
H. C. Slider	5
Upton	3
Tidwell	1
NMNH	11
Boyce Smith Collection (Cherokee Co.)	10
41CP2	52
41CP3	42
41CP5	468
41CP10	34
41CP12	257
41CP17	31
41CP20	38
41CP25	4
41CP71	91
41CP76	3
41CP78	14
41CP183	1
41CP244	37
41CP304	154
41CP408	19
Lineburger	2
Boyd Farm	1
Hilton Farm	10
Boyce Smith Collection (Camp Co.)	7
41CS1	1
41CS5	9
41CS7	9
41CS8	5
41CS14	16
41CS23	69
41CS25	83
41CS26	17
41CS37	5
41CS132	2
41CS133	4

**Table 1. East Texas sites/collections with Caddo ceramic vessels, cont.**

Site (with trinomial) or Collection (by County)	No. of vessels in database
41FK1	22
41FK2	52
41FK3	13
41FK4	84
41FK5	12
41FK32	11
41FK97	19
41FK107	2
Good Hope	17
41FN12	1
41GG3	6
41GG5	25
41GG50	28
Glade Creek	1
Hyte	27
41HE4/55	4
41HE75	9
41HE78	1
41HE82	1
41HE114	21
NMNH	4
41HP1	46
41HP2	4
41HP15	5
41HP26	2
41HP237	15
41HP239	3
41HS1	5
41HS3	427
41HS13	22
41HS14	3
41HS15	150
41HS74	23
41HS235	84
41HS253	28
41HS261	32
41HS262	1
41HS269	14
41HS718	1
41HS825	105
Darco Coal Mine	4

**Table 1. East Texas sites/collections with Caddo ceramic vessels, cont.**

Site (with trinomial) or Collection (by County)	No. of vessels in database
Eli Fields	21
Loftis	2
Marshall Red Gully	3
Martin	2
P. Smith	1
Boyce Smith Collection (Harrison Co.)	15
41LR1	21
41LR2	80
41LR39	4
41MR6	10
41MR12	48
41MR63	12
Boyce Smith Collection (Marion Co.)	7
41MX1	33
41MX2	83
41MX5	6
41MX6	6
41MX9	3
41MX65	38
Harold Nix	51
Sulphur River	7
41NA3	1
41NA22	1
41NA27	13
41NA49	49
41NA113	2
41NA202	5
41NA231	5
41NA285	1
Indian Cr.	1
41PN48	4
Beckville	1
41RA13	45
41RK2	5
41RK3	14
41RK79	4
41RK80	2
41RK132	4
41RK170	6



**Table 1. East Texas sites/collections with Caddo ceramic vessels, cont.**

Site (with trinomial) or Collection (by County)	No. of vessels in database
41RK214	11
41RK602	8
Bead	5
Morwell	2
J. T. Hughes Collection	10
41RR2	13
41RR3	9
41RR7	1
41RR8	13
41RR9	2
41RR11	259
41RR16	414
41RR41	43
41RR77	192
Jim Clark (Red River Co.)	1
Shawnee Town (Red River Co.)	1
Boyce Smith Collection (Red River Co.)	14
41SA89	1
41SA94	5
41SA116	2
41SA123	1
41SB35	2
41SB50	12
41SB71	1
41SM2	2
41SM55	4
41SM56	7
41SM73	15
41SM77	31
41SM90	8
41SM93	12
41SM150	15
41SM151	3
41SM158	2
41SM193	30
41SM197	6
41SM198	7
41SM223	2
41SM246	2
41SM247	6
41SM248	4
41SM249	20

**Table 1. East Texas sites/collections with Caddo ceramic vessels, cont.**

Site (with trinomial) or Collection (by County)	No. of vessels in database
41SM262	2
41SM268	1
41SM282	2
41SM290	21
41SM294	1
41SM355	3
Saline Creek	5
Indian Creek	1
Byars Ranch	1
Smith Co.	12
TJC (Smith Co.)	9
41SY24	4
41SY25	3
41SY27	4
41SY41	1
41SY45	8
41SY92	10
41TT2	36
41TT4	89
41TT6	90
41TT7	196
41TT11	9
41TT13	54
41TT17	14
41TT18	77
41TT36	4
41TT110	17
41TT111	9
41TT135	1
41TT321	3
41TT550	89
41TT650	3
41TT653	12
41TT718	6
41TT741	15
41TT851	2
41TT852	6
41TT853	8
Raymond Powell	6
Piney Creek	26
Dellwood Branch	20
41UR1	37
41UR2	140

**Table 1. East Texas sites/collections with Caddo ceramic vessels, cont.**

Site (with trinomial) or Collection (by County)	No. of vessels in database
41UR3	5
41UR5	15
41UR7	3
41UR10	1
41UR17	22
41UR18	14
41UR21	33
41UR30	120
41UR105	2
41UR106	1
41UR109	8
41UR133	12
41UR315	236
41UR317	88
41UR318	43
41UR319	13
41UR320	44
41UR326	72
41UR327	1
A. Davis	7
Keeling	34
Pine Bluff	1
Glasco	1
Upshur Co.	1
Boyce Smith Collection (Upshur Co.)	10
41VN3	1
41VN6	9
41WD1	2
41WD2	26
41WD4	17
41WD5	2
41WD14	2
41WD30	1
41WD31	2
41WD33	4
41WD52	9
41WD57	1
41WD60	59
41WD108	4
41WD109	46
41WD117	1
41WD208	16
41WD244	9
41WD354	5

**Table 1. East Texas sites/collections with Caddo ceramic vessels, cont.**

Site (with trinomial) or Collection (by County)	No. of vessels in database
41WD371	5
41WD382	1
41WD482	1
41WD503	7
41WD507	1
41WD538	9
41WD586	5
41WD589	2
Caney Creek	58
Wright	1
Arms Creek (Marion-Upshur Co.)	17
Clay Ball (Upper Neches)	9
Buddy Jones Collection-East Texas	5
Titus phase series	219
Upper Neches series	8
Upper Neches series, Buddy Jones Collection	33
Brooklyn Museum	3
Stock Pond (Big Cypress basin)	25
TPWD	3
Total number of vessels in the database	8068

**Table 2. Louisiana sites/collections with Caddo ceramic vessels.**

Site (with trinomial) or Collection (by Parish)	No. of vessels in database
16BO236	9
16BO237	1
16CD12	16
16CD13	190
16DS4	19
16DS212	1
16NA9	2
16NA13	1
16NA14	1
16NA16	2
16RR1	5
16SA1	1
16SA30, B	80

**Table 2. Louisiana sites/collections with Caddo ceramic vessels, cont.**

Site (with trinomial) or Collection (by Parish)	No. of vessels in database
16SA37a	22
16SA67	1
16SA91	1
X16SA4* (also from 16SA30, B)	1
DeSoto Parish	1
C. C. Jones	3
Total number of vessels in the database	357

\*SMU trinomial with the X prefix

**Table 3. Oklahoma sites/collections with Caddo ceramic vessels.**

Site (with trinomial) or Collection (by County)	No. of vessels in database
34CH1	3
34CH112	10
34MC1	36
34MC6	19
34MC8	3
34MC9	1
34MC11	66
34MC12	7
34MC54	20
34MC84	3
34MC105	3
34MC215	110
Total number of vessels in database	281

**Table 4. Arkansas sites/collections with Caddo ceramic vessels.**

Site (with trinomial) or Collection (by County)	No. of vessels in database
3LA1	163
3LA27	33
3LA28	4
3LA38	8
3LA48	46
3LA84	5
3LA97	67

**Table 4. Arkansas sites/collections with Caddo ceramic vessels, cont.**

Site (with trinomial) or Collection (by County)	No. of vessels in database
3MI1	21
3MI6	252
3MI29	8
Total number of vessels in database	607

#### **Acknowledgments**

The efforts of Bo Nelson and Mark Walters in the Caddo vessel documentation effort over the last decade and more are too numerous to mention. Thanks to Jeff Girard and Duncan McKinnon for sharing ceramic vessel database information, and I appreciate Ross Fields sharing the PDF of the 41MR63 technical report. Thanks also to Julian A. Sitters who assisted with the documentation of the final round of vessels at the Texas Archeological Research Laboratory at The University of Texas at Austin.

#### **References Cited**

- McKinnon, D. P.  
2016 Distribution of Design: The Rayed Circle. *Caddo Archeology Journal* 26:29-42.