



1974

## 41BX171: A Late Nineteenth Century City Dump in San Antonio, Texas

Clive Luke

Follow this and additional works at: <https://scholarworks.sfasu.edu/ita>



Part of the American Material Culture Commons, Archaeological Anthropology Commons, Cultural Resource Management and Policy Analysis Commons, Historic Preservation and Conservation Commons, History Commons, Human Geography Commons, Other Anthropology Commons, Other Arts and Humanities Commons, Other History of Art, Architecture, and Archaeology Commons, Other Social and Behavioral Sciences Commons, and the Technical and Professional Writing Commons

Tell us how this article helped you.

---

### Repository Citation

Luke, Clive (1974) "41BX171: A Late Nineteenth Century City Dump in San Antonio, Texas," *Index of Texas Archaeology: Open Access Gray Literature from the Lone Star State*: Vol. 1974 , Article 5. <https://doi.org/10.21112/ita.1974.1.5>

ISSN: 2475-9333

Available at: <https://scholarworks.sfasu.edu/ita/vol1974/iss1/5>

This Article is brought to you for free and open access by SFA ScholarWorks. It has been accepted for inclusion in Index of Texas Archaeology: Open Access Gray Literature from the Lone Star State by an authorized editor of SFA ScholarWorks. For more information, please contact [cdsscholarworks@sfasu.edu](mailto:cdsscholarworks@sfasu.edu).

---

## 41BX171: A Late Nineteenth Century City Dump in San Antonio, Texas

### Licensing Statement

This is a work produced for the Texas Department of Transportation (TxDOT) by the report producer. TxDOT and the report producer jointly own all rights, title, and interest in and to all intellectual property developed under TxDOT's contract with the report producer. The report may be cited and brief passages from this publication may be reproduced without permission provided that credit is given to both TxDOT and the report producer. Permission to reprint an entire chapter, section, figures or tables must be obtained in advance from either the Supervisor of the Archeological Studies Branch, Environmental Affairs Division, Texas Department of Transportation, 125 East 11th Street, Austin, Texas, 78701 or from the report producer.

**41 BX 171: A LATE NINETEENTH  
CENTURY CITY DUMP IN  
SAN ANTONIO, TEXAS**

**A PRELIMINARY REPORT  
by  
CLIVE LUKE**

**Texas Highway Department Publications in Archeology: 1974**



of these furnaces led to the formation of a special committee which recommended in 1894 that the unused quarry area in the northern part of San Antonio be utilized as the municipal dumping ground. Although no specific beginning date for the dump could be found in the records, 1895 appears to be within reason: a date which is substantiated by archaeological remains. The completion of a large incinerator in 1923 near Salado Creek on the east side of the city may mark the end of dumping in the vicinity of the archaeological site, although dumping and burning may have continued in the area for some years thereafter. Land in the quarry area was sold to the San Antonio Independent School District in 1939 for construction of the Alamo Stadium precluding dumping and burning at the site at that time. A map seen in the City Engineer's Office, San Antonio, indicates that an incinerator was at one time located near the proposed highway right-of-way. The City Engineer's Office does have some information pertaining to City incinerators, but as these documents are not indexed or catalogued, the possibility of locating specific data relative to the dump and incinerator is indeed remote.

One trench was excavated to a length of thirty-five feet. It was oriented approximately north-south and designated Trench One. To eliminate unnecessary man hours, a backhoe initially removed the disturbed and late fill from the upper levels of the trench. Beneath the levels removed by backhoe, the trench was staked in units of five feet by five feet. Each unit was excavated by hand in arbitrary one foot levels, but the ashy soil was not screened. The elevation of a point on a concrete slab in the middle of the trench was established, using a Texas Highway Department Bench Mark as reference. Having so established a point of known elevation,

corresponding levels of every unit could be kept at a constant elevation.

In addition to testing this dump, a test was made of a second area where core samples demonstrated the presence of garbage. A backhoe trench was used to expose that deposit which was determined to be from the 1940's. No further effort was expended in that area.

A detailed analysis and study of the artifacts at this time seems inadvisable because the sample is so small in terms of the entire dump. Any attempt to utilize the data recovered in September and October 1974 would probably result in biased conclusions. Consequently, further excavation is necessary to provide a larger sample. However, in order to indicate what sort of artifact return was generated, a catalogue of artifacts prepared by Marshall Eiserer, of the Texas Highway Department Archaeology Section, is appended.

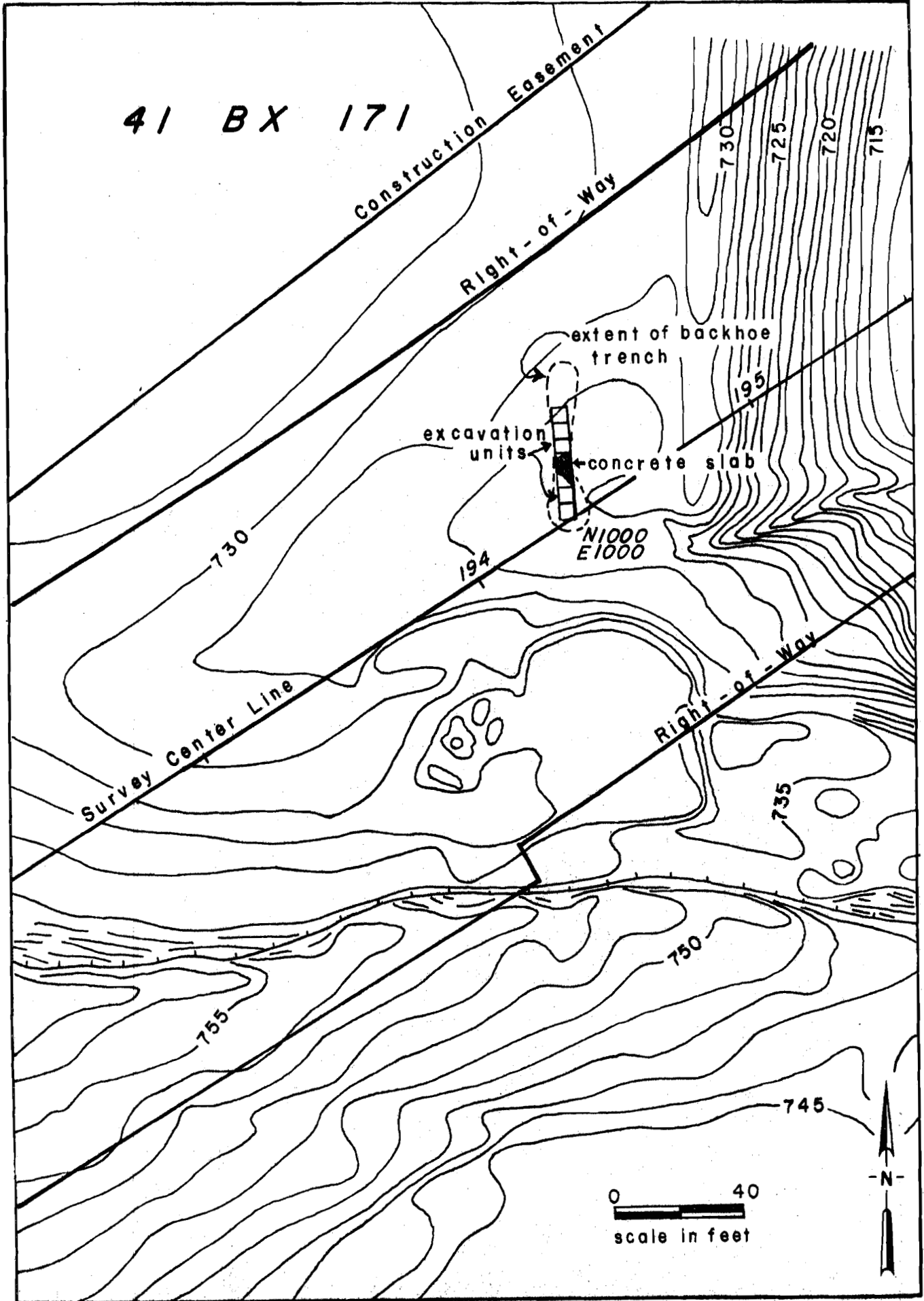
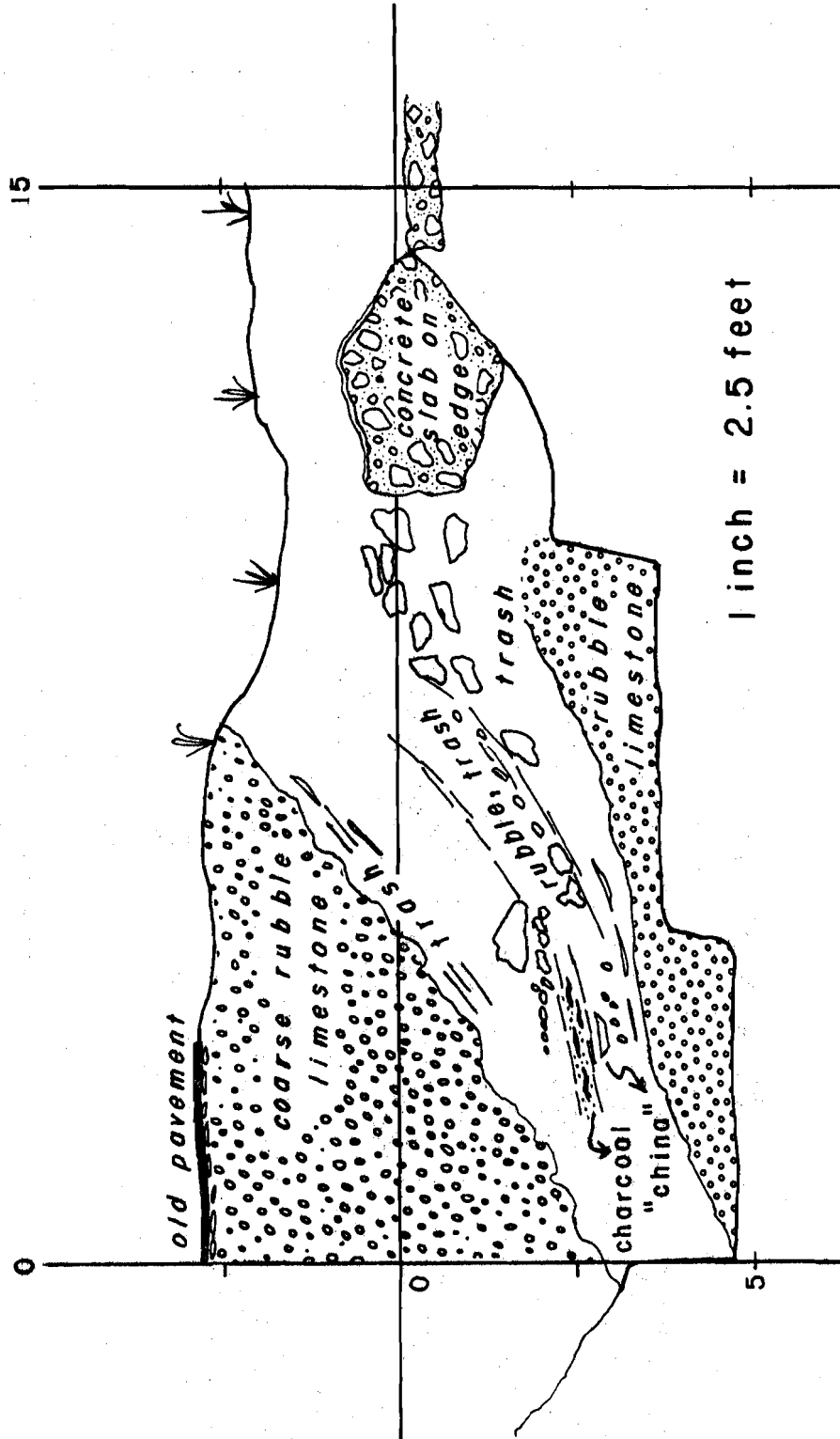


Fig. 1

Fig. 2

Note: Ref. line is 723.5 ft.

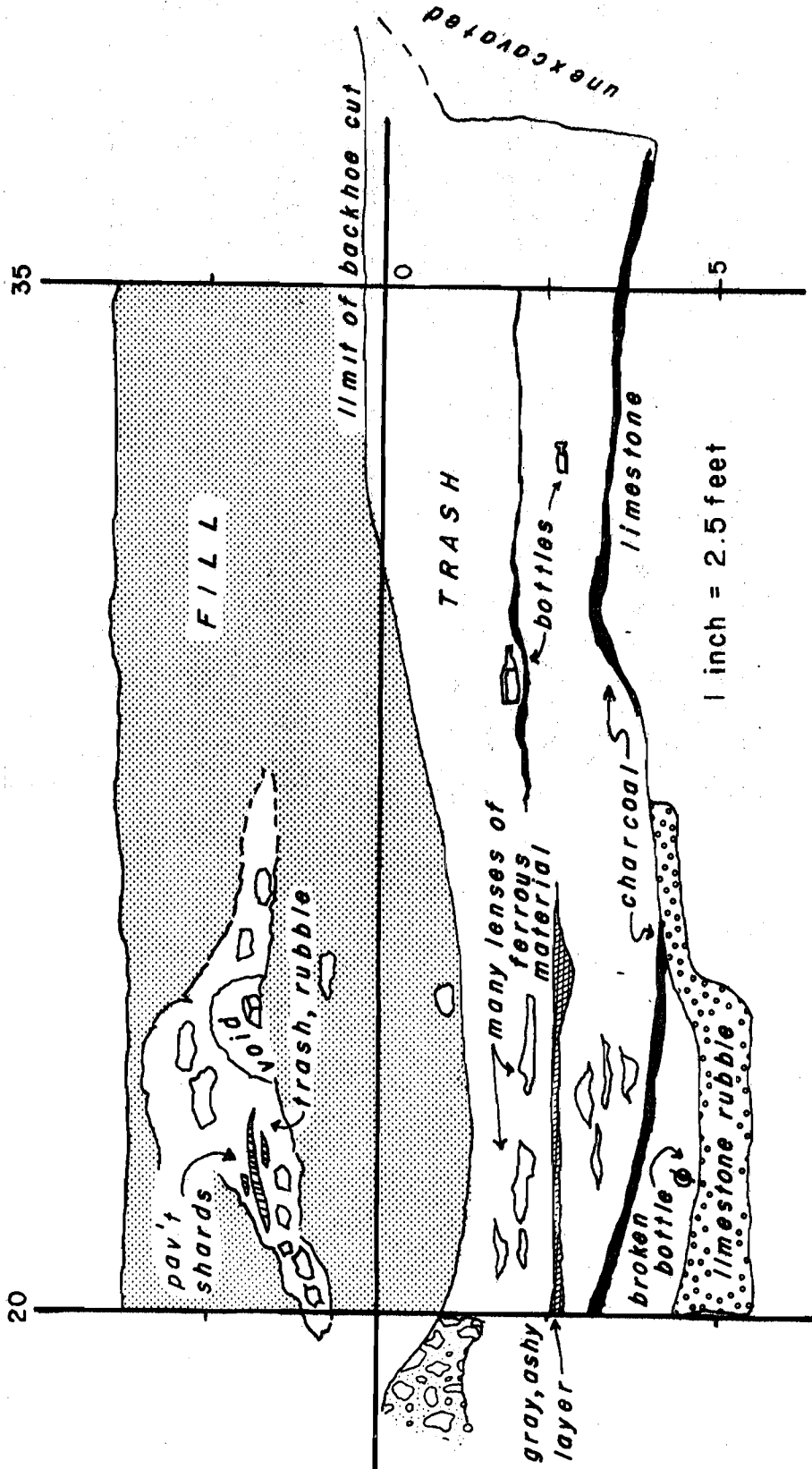


**PROFILE WEST WALL  
TRENCH 1, 41 BX 171**



Fig. 3

Note Ref. line is 723.5 ft.



PROFILE WEST WALL  
TRENCH 1, 41 BX 171

Appendix I  
by  
Marshall Eiserer

41BX 171: Artifact Inventory by Lots

LOT 1

Provenience: N995/E1000 to N1012/E1000; 0.0' - 6.0'  
(Disturbed Fill)

GLASS

BOTTLES

- 1 Dr. Pitchers Castoria
- 1 Mrs. Winslows Soothing Syrup
- 1 Kelly and Palland Pharmacists, El Paso, Texas  
prescription Bottle
- 1 Fragment, Wykoffs Union Blueing
- 1 Neck Fragment of Probable Whiskey
- 1 Neck Fragment of Probable Hood's Sarsaparilla
- 1 Neck Fragment Probably Ayers Sarsaparilla
- 1 Unidentified Light Amber Round Bottle
- 2 Unidentified Clear Round Bottles
- 1 Unidentified Cobalt Blue Round Bottle
- 1 Neck Fragment Probable Wine
- 1 Cosmetic Jar - Milkglass

GLASSWARE

- 2 Bases of Clear Goblets
- 1 Base of Cosmetic Container Opaline Glass
- 1 Base of Drinking Glass Ruby Glass on Light Amber Glass

MISCELLANEOUS GLASS

- 1 Insulator Manufactured by Broakfield

CERAMICS

STONEWARE

- 4 Fragments, 2 Meyer Pieces

CHINA

- 5 Plate Fragments
- 1 Marked Pearl White Goodwin Bras.
- 1 Marked Ironstone China Guaranteed
- 1 Saucer Fragment
- 6 Miscellaneous Decorated China Fragments
- 1 Fragment Probable Handled Sugar Bowl
- 1 Cup Marked Scholz' (Garden)

MISCELLANEOUS CERAMICS

- 1 Mouth Fragment Gin Bottle
- 2 Pieces of Glazed Flower Vases or Pots
- 1 Basal Fragment of Arnold Ink Container  
Vitreous Stone Bottles, J. Bourne & Son  
Denby by Potter
- 1 Porcelain Top Stopper for Lightning Bottle Stopper

METAL

IRON

- 1 Lock
- 1 Horseshoe
- 1 Unidentified Object, possible clock

**41 BX 171**

LOT 2

Provenience : N1000/E1000, Level 1 (Disturbed)  
(Below Lot 1)

**GLASS**

**BOTTLES**

- 1 J. M. Clark Pickle Co. Bottle, Light Amber  
Shoulder & Neck Fragment
- 2 Crown Stopper Bottles - Probable Beer
- 1 Neck & Mouth Amber Bottle
- 1 Neck of Possible Peppersauce Bottle - Clear
- 1 Shoulder Fragment - Possible Beer
- 1 Fragment Prickly Ash Bitters Bottle
- 2 Pieces Dark Green Stained Glass

**MISCELLANEOUS GLASS**

- 1 Goblet Fragment
- 1 Stopper
- 1 Button

**CERAMICS**

**STONEWARE**

- 2 Pieces Stoneware
- 1 Unglazed

**CHINA**

12 Pieces Miscellaneous China

**FAUNAL**

- 4 Oyster Shell

41 BX 171

LOT 3

Provenience: South Dump

- 6 Fragments of Bottle Glass
- 2 Aqua Coca Cola Bottle Glass  
Design Patented 1915
- 1 Clear Fragment Whiskey Bottle  
Machine Made - post 1903  
[P] int Embossed on Side
- 2 Miscellaneous Clear Fragments

41 BX 171

LOT 5

Provenience: N1000/E1000, Level 1 (Undisturbed)

**GLASS**

**BOTTLES**

- 1 Fragments of Chamberlain's Cough Remedy
- 1 Complete Bromo Seltzer, Emerson Drug. Co.
- 1 Body Fragment "American Pickles (Tennessee Style)"
- 1 Clear Neck, Prescription Ware Bottle
- 1 Unidentified Aqua Shoulder & Neck Fragment  
(Possible Shoe Polish)
- 1 Milkglass Porcelain Liner for Mason Style Fruit  
Jar Embossed Consolidated Fruit Jar Company,  
New York

**CERAMICS**

**STONEWARE**

- 1 Shoulder Fragment Stoneware

**CHINA**

- 3 Miscellaneous Fragments China
- 1 Cup Fragment (China)

**MISCELLANEOUS CERAMICS**

- 1 Door Knob (White)

41 BX 171

LOT 6

Provenience: N1000/E1000, Level 2

GLASS

**BOTTLES**

- 1 Basal Sections of Green Demijohn 2 Gallon Bottle
- 1 Shoulder Fragment Mellins Infant Food
- 1 Mouth Probable Whiskey Bottle
- 1 Mouth Hutchison Soda
- 1 Base Probable Wine Bottle
- 1 Bottle Mrs. Winslows Soothing Syrup
- 1 Homeopathic Tube Vial
- 11 Miscellaneous Pieces
- 1 Base Bottle Curtice Brothers Preserves

**MISCELLANEOUS GLASS**

- 1 Fragment of a Schlur Palm Garden Salon Goblet
- 1 Base of Goblet
- 4 Pieces Dark Green Stained Glass
- 1 Opaline Glass Fragment
- 1 Lamp Shade Frag
- 1 Pressed Glass Bowl Fragment

CERAMICS

**STONEWARE**

- 3 Stoneware Fragments
- 2 Mexican Looking Piece of Pottery

CHINA

- 1 Child's Toy Saucer or Plate
- 10 Miscellaneous China Sherds
- 2 Ironstone Sherds (Trade Marks)
- 4 Decorated Sherds
- 3 Cup Fragments
- 2 Bowl Fragments
- 1 Earl White, Goodwin Brothers Plate Fragment

**MISCELLANEOUS CERAMICS**

- 1 Possible Pipe Stand
- 1 Corner Tile

**LOT 6 (Continued)****MISCELLANEOUS**

- 1 Shoe Heel**
- 1 Toothbrush Handle**
- 1 Unidentified Brass or Copper Object, Probably a Plug**
- 1 Piece Slate**
- 1 Carson Battery, Core, Debossed - Solar**



**41 BX 171**

LOT 7

Provenience: N1005/E1000, Level 1 (Under Lot 1)

**GLASS**

## BOTTLES

- 1 Base San Antonio Coca Cola Bottling Co.
- 1 Dr. Pitchers Castoria Bottle
- 1 Shoulder & Neck Portion Wyckoffs Union Blueing
- 1 Fragments Jo-Jo Liquor Flask
- 1 Milkglass Fragment

**CERAMICS**

## STONEWARE

- 2 Glazed Sherds
- 1 Unglazed

## CHINA

- 1 Plate Royal Stone China Baker & Co.
- 1 Royal Ironstone, Johnson Eng, (Bowl)
- 7 Decorated Sherds
- 22 Miscellaneous Sherds
- 1 Blue Sherd (Handle)
- 1 Cup Fragment

**IRON**

- 1 Horseshoe

**MISCELLANEOUS**

- 1 Comb Fragment
- 1 Battery Core

41 BX 171

LOT 8

Provenience: N1005/E1000, Level 2

GLASS

BOTTLES

- 1 Unidentified Clear Bottle  
(Sirup Reconstituant a Larseniate De Fer  
Soluble de a Clermont)
- 1 Unembossed Prescription Ware Bottle (Buffalo Oval)
- 1 Fragmented Scotts Emulsion "Cod Liver Oil"
- 1 Badly Heated Mason Type Preserves Jar
- 1 Basal Portion Probable Wine Bottle
- 4 Unidentified Pieces of Bottles

MISCELLANEOUS GLASS

- 1 Fragment Window Pane
- 1 Lamp Chimney Rim
- 1 Glass Fragment
- 1 Goblet Base

CERAMICS

CHINA

- 1 Oval Plate K.T.&K. China
- 1 Plate Ironstone China Alfred - Meakin England
- 1 Oval Plate (Ironstone China)
- 4 Ornament Sherds
- 18 Unidentified Sherds

MISCELLANEOUS CERAMICS

- 2 Inside Glazed Sherds
- 2 Fragments Of Pipe

MISCELLANEOUS

- 1 Battery Core
- 1 Toothbrush Handle
- 1 Stoneware Fragment
- 1 Graphite Washer

41 BX 171

LOT 9

Provenience: Backdirt from Backhoe Trench #1

**GLASS**

**BOTTLES**

1 Mouth and Neck Fragment Clear Liquor Flask

**MISCELLANEOUS GLASS**

1 Glass Stopper, was Cork Wrapper

**CERAMIC**

**CHINA**

1 Base Fragment of Plate: Hanley, England J&C Meakin  
Semi-porcelain

**MISCELLANEOUS CERAMICS**

1 Teakettle Spout

1 Dog Body

1 Rookwood Pottery Piece Base Fragment

41 BX 171

LOT 10

Provenience: Backhoe Trench # 1, Section 2

GLASS

BOTTLES

- 1 Sloan's Liniment (Machine Made) Post 1903
- 1 Wine 1/2 Pint
- 1 No Deposit No Return Dr. Pepper Bottle
- 1 Beer A.B.G.M. Co.
- 1 Probable Peppersauce (Clear)
- 2 Duerler San Antonio, Texas (Crown) Soda
- 1 Probable Steak Sauce
- 1 Coca Cola San Antonio, Texas Before 1915
- 1 Lea & Perkins Wochestershire Sauce
- 1 Body Fragment Soda or Beer
- 1 Wittemore Boston (Shoe Polish)
- 1 Probable Shoe Polish
- 1 Sanfords Black Ink (Sm Co.)
- 1 Probable Shoe Polish Machine Made Post 1903
- 1 E R. Durkee & Co. (Flavoring)
- 1 Alamo Drug Store, A Dreiss San Antonio, Texas Prescription Bottle
- 1 Unidentified Bottle EJB (Bitters) (?)
- 1 Mucilage (Bell)
- 1 Sample (?) Masons International A 1 Sauce
- 1 Perfume or Cologne (?)
- 1 Homeopathic Vial
- 1 Probable Shoe Polish
- 1 Young American Lintment D6 Brown New York
- 2 Bromo Seltzer
- 1 Quart Amber Beer R & Co.
- 1 Tabasco Sauce (?)
- 1 Spice Bottle HR&B Thurben & Co.
- 3 Unidentified Handmade Bottles
- 1 Unidentified Machine Made Bottle
- 1 Clear Bottle Screwcap Sanfords on Base
- 1 Jar Armour Packers on Base (Cheese) (?)

GLASSWARE

- 5 Goblet Bodies
- 1 Mug

MISCELLANEOUS GLASS

- 1 Unidentified Milkglass Object Embossed Osborn Mfg. Co. New York
- 1 Fragment Window Pane

LOT 10 (Continued)

CERAMICS

STONEWARE

- 10 Base Fragment; Many Appear to be Meyer
- 5 Handles, 2 Meyer
- 1 Spitoon Fragment
- 1 Denby Pottery Fragment (Ink)

CHINA

- 1 Bowl Scholz's Garden
- 1 Server (?) Royal Patent Ironstone
- 1 Plate Base - Hanley
- 1 Plate Scholz's Garden
- 1 Saucer - Leonard Vienna Austria
- 1 Bowl Base (?) The Wheel Pottery Co.
- 1 Pitcher Base (?) Royal B o n Chrysanthemum Germany
- 3 Miscellaneous Decorated Sherds
- 2 Miscellaneous Sherds

MISCELLANEOUS CERAMICS

- 1 Mortar
- 2 Brawn Door Knobs
- 1 Ceramic Spool Insulator
- 1 Doll Arm

IRON

- 1 Single Tree Ring

Provenience: N1020/E1000 Level 1 (Under Lot 10)

## GLASS

### BOTTLE

- 1 Unidentified Cobalt Blue Bottle
- 1 Ed Pinvad Bottle Cologne
- 1 Prescription Bottle C. Schasse Druggist  
277 West Commerce St.  
San Antonio
- 1 Unidentified Bottle C. B. Wood(?) & Sons, Rochester,
- 1 Mouth Aqua Glass Unidentified
- 1 Beer Bottle Neck and Mouth, Quart
- 1 Fragment Mason Jar

### MISCELLANEOUS GLASS

- 1 Piece Blue Glass
- 1 Golden Bead or Button
- 1 Goblet Stem & Base
- 1 A Scholtz Palm Garden Goblet Fragment
- 1 Glass Bowl Fragment

## CERAMICS

### STONEWARE

- 4 Miscellaneous Stoneware
- 4 Unidentified Sherds

### MISCELLANEOUS CERAMICS

- 1 Bisque Doll Body, Head Missing
- 1 Oriental Toothpaste Container

41 BX 171

LOT 12

Provenience : N1020/E1000, Level 2

GLASS

**BOTTLES**

- 1 Body Fragment Probable Wine  
Basal Frag. - Dr. S.B.H. & Co. "Bitters"
- 1 Shoulder & Neck Fragment Thompsons Phosphate of Wild  
Cherry
- 1 Base Wine Bottle
- 1 Sanfords Black Ink Bottle
- 1 Neck of Wine Bottle
- 1 Side Panel Gebhardts Chili Bottle
- 1 Mouth Hutchison Soda
- 1 Mouth Prescription Bottle
- 1 Mouth Beer Bottle
- 1 Body Sherd Duffys Malt Whiskey
- 12 Unidentified Sherds

**MISCELLANEOUS GLASS**

- 1 Lamp Chimney Rim
- 1 Fragment Window Pane
- 1 Fragment Reinforced Glass (Chicken Wire)
- 1 Button
- 1 Milk Glass Container
- 1 Pitcher Fragment
- 1 "Candy Container" Fragment
- 1 Lamp Fragment

**CERAMICS****STONEWARE**

- 15 Glazed Sherds
- Unglazed Sherd
- Denby Pottery Fragment (**Ink**)

**CHINA**

- 7 Fragments Large Plate or Plate "Stone China T.P.C. Co.  
Fragments Decorated Saucer Dresden'
- Fragments Saucer "Carlsbad" on Base

## LOT 12 (Continued)

- 5 Cup Fragments
- 3 Plate Fragments
- 12 Miscellaneous Sherds
- 1 Fragment of Creamer
- 1 Castor

## MISCELLANEOUS CERAMICS

- 1 Clay Pipe
- 1 Large Unglazed Piece of Pottery (Crock)

## METAL

- 1 Spike (Railroad)
- 1 Brass Lamp Holder (Wall Lamp)
- 1 Pearl Button



41 BX 171

Provenience: N1020/E1000, Level 3

## GLASS

### BOTTLES

- 1 Prickley Ash Polkroot Potassium The Great Purifier
- 2 Bottle Bases, Possibly Porter or Ale
- 2 Bottle Bases, Possibly Wine
- 1 Possible Flavoring
- 1 Cheeseborough Vaseline Bottle
- 1 Possible Tabasco Sauce
- 1 Dr. D. Jaynes Carminative Balsam
- 1 Ponds Extract
- 1 Aqua Possible Wine Bottle Base
- 2 Fragments Possible Flavoring or Extract "Ball Neck  
Panel<sup>v</sup> Type
- 1 Body Sherd Possible Hock Wine
- 1 Body Sherd Possible Wine
- 1 Prescription Bottle Clavin, Druggist, Commerce St.  
San Antonio
- 1 Side Panel Cod Li[ver Oil]
- 3 Unidentified Mouth Fragments
- 2 Unidentified Fragments
- 1 Palmers Perfume Or Cologne

### GLASSWARE

- 5 Bases or Stems of Goblets

### MISCELLANEOUS GLASS

- 1 Glass Stopper Hutchison Soda
- 1 Glass Stopper
- 1 Milk Glass Liner Ball Mason
- 1 Chimney Rim

## CERAMICS

### STONEWARE

- 5 Sherds of Stoneware
- 1 Crock Lid Fragment
- 2 Unglazed Sherds
- 1 Gin Bottle Base
- 1 Denby Ink (Arnold Ink Co.)

## LOT '13 (Continued)

**CHINA**

- 1 Fragment Mustache Cup
- 17 Miscellaneous Sherds
- 1 Pitcher Base The C.C.T.P. Co. Semigranite
- 1 Possible Pitcher Base
- 2 Sherds from Possible Pitcher
- 1 Handle
- 1 Base Sherd - Stone China Wilkinson
- 1 Green Glazed Small Vessel Base - Possible Creamer
- 1 Deep Saucer K. T&K, China

**MISCELLANEOUS**

- 1 Toothbrush Handle - Bone, Dupont & Evers

41 BX 171

LOT 14

Provenience: N1020/E1000, Level 4

GLASS

## BOTTLES

2 Ochs & Aschbacher, San Antonio, Texas  
1 Beer  
1 Beer A B G B Co. on Base 1886-1928  
1 Hock Wine Neck  
1 Fragment Warners Safe Kidney & Liver Cure  
1 Raven Gloss Shoe Dressing, New York, U.S.A.  
1 Burnetts Standard Flavoring Extract  
1 Wyckoff & Co. Union Blueing  
1 Base Aqua Beer (?)  
2 Bases Prescription Bottles  
1 Prescription Bottle  
1 Probable Extract Bottle  
1 Prescription Bottle - Laredo, Texas  
1 Body Sherd Prescription Bottle  
2 Unidentified Sherds  
1 Scotts Emulsion  
1 Cobalt Blue Bottle, Unidentified  
2 Wine Bottles  
1 Unidentified Amber Bottle  
1 Kaltmeyer & Son Drug Store Military Plaza  
San Antonio, Texas  
1 Cheesebrough Mfg. Vaseline  
1 Dr. Price Delicious Flavoring Extract  
1 A. J. Hinds Portland M.E.  
2 Unembossed Prescription Bottles  
1 Maltine Mfg. Co. Chemists, New York  
1 Clear Unembossed Bottle  
1 W. H. Hooker & Co. Sole Agents, North America  
Acker's English Remedy for the Throat and Lungs  
1 Alamo Drug Store Bottle, A. Dreiss  
1 Probable Sewing Machine Oil Bottle  
1 Squa Bottle Base  
1 Lea & Perrins Wocheestershire Sauce Bottle Mouth  
1 H. Schultz Druggist, San Antonio  
2 SGB Siezent & Hijos (Bitters)  
1 Singer Sewing Machine Oil  
1 Ponds Extract  
2 Neck & Mouth Wyckoff's Union Blueing  
1 Base " " "  
1 Side Panel " " "  
2 Necks & 1 Base Wine Bottles

## LOT 14 (Continued)

- 1 Shoulder and Neck of Picnic Flask
- 1 Shoulder of Hock Wine
- 1 Hoods Sarsaparilla Bottle Panel
- 1 Probable Pickle or Relish Bottle (Neck)
- 1 Bottle Called A Dixie Panel
- 1 Sample Whiskey

**GLASSWARE**

- 1 Goblet Stem
- 2 Heavy Glasses
- 1 Shot Glass
- 2 Goblets
- 1 Fragment of Triple Layer Glass Object Probably a  
Glass, Layers Clear on Red on White
- 1 Bowl Sherd
- 1 Chimney Sherd

**MISCELLANEOUS GLASS**

- 1 Probable Compote Stem
- 2 Sherds Window Pane

**POTTERY****STONEWARE**

- 5 Sherds of Meyer Jug
- 6 Miscellaneous Sherds

**CHINA**

- 5 Cup Sherds
- 5 Saucer Sherds
- 4 Plate Sherds
- 1 Soap Dish Sherd
- 1 Urn Sherd
- 5 Urn Sherds
- 5 Wash Bowl Sherds
- 2 Cheese Jar Sherde
- 1 Flower Pot Sherd
- 2 Sherds of Cassarole Lids
- 11 Miscellaneous Sherds
- 2 Sherds of Pitcher
- 3 Sherds of Wash Basin

**MISCELLANEOUS CERAMICS**

- 1 Sewer Pipe Sherd

LOT 14 (Continued)

**MISCELLANEOUS**

- 1 Copper or Brass Object
- 1 Equus Mandible Section

41 BX | 171

LOT

Provenience: N1010/E1000, Level 5

GLASS

BOTTLES

- 1 Body Large 4 Paneled Bottle "Wisconsin Panel"
- 1 Sherd Picnic Flask
- 1 Shoulder of "Champagne-Catsup" Screw Cap
- 1 Neck, Wine
- 1 Shoulder & Neck "Shoo-Fly" Flask
- 1 Body Sherd of Quart Beer
- 3 Unidentified Sherds

GLASSWARE

- 2 Goblet Sherds
- Candy, or Perhaps Cigar Humidor
- 2 Milkglass Sherds
- 1 Pleated Window Glass Sherd

CERAMICS

STONEWARE

- 3 Stoneware Sherds, 3 Crock Sherds, 1 Unglazed Sherd

CHINA

- 3 Sherds Cassarole 1
- 3 Bowl Sherds
- 2 Cup Sherds
- 4 Saucer Sherds
- 8 Miscellaneous Sherds
- Possible Soap Dish Sherd
- Washbowl Sherd
- 1 Castor

MISCELLANEOUS CERAMICS

- 1 Mexican Pottery Sherd
- umberous Sherds from Urn
- Teakettle Spout

MISCELLANEOUS

- 3 Bones
- 1 Toothbrush Handle "Mavrey Deschamps Paris "Marjoiaie"
- 1 Cap for Kerosene Lamp

41 BX 171

LOT 16

Provenience : N1025/E1000, Level 1  
(Under L100)

GLASS

BOTTLES

- 1 Carters Ink (Cone)
- 1 Clear Cone Ink
- 1 Bromo Seltzer
- 1 Lea & Perrins Wochestershire Sauce
- 1 Wine
- 1 Unidentified Clear Bottle (Widemouth)
- 1 Prescription Bottle
- 1 Durkee Bottle, Patented 1877

CERAMICS

CHINA

- 1 Toy Plate Sherd

MISCELLANEOUS CERAMICS

- 1 Doll Head
- 1 Castor

41 BX 171

LOT 17

Provenience: N1025/E1000, Level 2

GLASS

BOTTLES

- 1 Mrs. Windslows Soothing Syrup
- 1 Prescription Bottle
- 1 Duerler, San Antonio, Texas (Soda)
- 1 Twelve Sided Bottle Base
- 1 Kickup of Aqua Wine (?)
- 1 Neck Probably Hood's Sarsaparilla
- 1 Body Tips and Silver Thorn
- 2 Wine Necks
- 1 Picnic Flask Body
- 1 Sample Mellins Infant Food
- 1 Souders Elegant Flavoring Extract
- 1 Probable Ale or Porter Bottle Base
- 1 Saxlehners Bitterquelle Hunyadi Janos
- 1 Homeopathic Vial
- 1 Unidentified Clear Bottle
- 1 Wine Bottle Shoulder

GLASSWARE

- 1 Mug Base
- 1 Flow Glass Handle
- 1 Possible Vase Stem
- 1 Unidentified Footed Clear Glass Object "Pat. Oct 28..,"
- 1 Venetian Looking Glass Object

MISCELLANEOUS GLASS

- 1 Hemingray No. 9 Patent May 2, 1893, (Insulator)  
(Probably in Disturbed Soil)

CERAMICS

STONEWARE

- 3 Meyer Sherds
- 8 Miscellaneous Sherds
- 1 Conduit Stoneware Insulator

CHINA

- Sherds from Large Serving Platter
- 1 Cup Sherd



## LOT 17 (Continued)

- 1 Saucer Sherd
- 2 Plate Sherds
- 2 Sherds from Wash Basin, J.M. & Son Ironstone -  
S. Liverpool
- 2 Sherds Bowl Goodwin Pottery
- 2 Sherds From Pitcher
- 5 Miscellaneous Sherds
- 1 Little Statue, Head Missing

**METAL**

- 1 Horseshoe
- 1 Muleshoe
- 1 Soldering Iron (Brass)
- 1 Unidentified Brass Object

**MISCELLANEOUS**

- 2 Pieces of Slate
- 1 Piece Coal
- 3 Pieces of Bone
- 1 Toothbrush Handle Qualite Supericure Deltamex  
Dette France
- 1 Piece of Very Recent Braided Cotton Cord

41 BX 171

LOT 18

Provenience : N1025/E1000, Level 3

GLASS

BOTTLES

- 2 Lea & Perrins Wochertershire Sauce
- 1 Cuticura System of Curing Constitutional Humors
- 1 Warners Safe Kidney and Liver Cure
- 1 M. Golden's Leather Cement
- 1 Shoulder of "Pot" Mustard Bottle
- 1 Shoulder of Preserve Ware
- 1 4 Paneled Clear Bottle "Wisconsin" Style
- 1 Bromo Seltzer
- 1 Prescription Bottle "Baltimore Oval"
- 1 Eclipse Styler Olive Oil
- 1 Small "Garretts" Snuff
- 1 Beer Aqua B.G. Co. on Bade Burlington Glass Co., Canada
- 1 Johann Hoff Liquor
- 1 Beer, Amber, R&Co. on Base, Make Unknown
- 1 Whittlemore Boston U.S.A. (Shoe Polish)
- 1 Square of American Style Pickle Bottle
- 1 Preserve Possibly Brandied Peach Bottle (Green)
- 1 Square Unembossed Aqua Bottle "Square Polish"
- 1 Capers Pepper Bottle (Neck)
- 1 Round Aqua Bottle Possible Polish
- 1 Cobalt Blue Round Bottle (Neck), Unidentified
- 1 Shoulder of Aqua Quart Beer
- 2 Wines
- 1 Singer Sewing Machine Oil Bottle (Body)
- 1 Maltine Mfg. Co, Chemist New York Bottle
- 1 Unidentified Small Clear Square Bottle
- 1 Rubifoam for the Teeth (Tooth Powder)
- 1 Wm. Appmann Druggist San Antonio, Texas
- 1 Section of Possible Blueing Bottle
- 1 Portion of Clear Cone Ink
- 1 Unidentified Bottle Base Fragment

GLASSWARE

- 2 Glass Bases
- 5 Goblet Sherds
- 1 Stem of Possible Compote
- 1 Sherd of Glass Bowl

LOT 18 (Continued)

**MISCELLANEOUS GLASS**

- 1 Window Pane Sherd
- 1 Chimney Rim

**CERAMICS**

**STONEWARE**

- 1 Gallon Jug
- 5 Miscellaneous Stoneware Sherds

**CHINA**

- 1 Washbowl (Sherds)
- 7 Plate Sherds
- 2 Cup Sherds
- 1 Doll Head
- 1 Bisque Doll Head
- 1 Ornate Saucer
- 1 Toy Cup
- 1 Toy Saucer
- 1 Plate Brighton & Concourse Souvineer Plate

**MISCELLANEOUS CERAMICS**

- 1 Doll leg

**METAL**

- 1 Kerosene Lamp Burner
- 1 Brass Toy (Wagon and House)
- 2 Unidentified Brass Objects

**MISCELLANEOUS**

- 1 Fragment of Slate
- 2 Pieces Cut Bone
- 1 Bone
- 1 Cork

41 BX 171

LOT 19

Provenience: N1025/E1000, Level 4

GLASS

**BOTTLES**

- 2 Vaseline Cheesebrough Mfg. Co.
- 1 Mrs. Winslow's Soothing Syrup
- 1 Atrask's Magnetic Balsam
- 3 Hock Wine Fragments (Same Bottle)
- 1 Bitterquelle - Saxlehner's Hunyadi Janos
- 1 Base Fragment Cathedral Hexagon Pickle
- 1 Preserve
- 1 prescription Bottle, Kalteyer & Schuchard, E. Houston.  
San Antonio
- 1 Wine Bottle Light Green
- 1 Wine Bottle Dark Green
- 1 Cone Ink
- 1 Insectine Trademark
- 1 Shoulder and Neck Wine Bottle
- 1 Neck Quart Beer
- 1 Sanford Black Ink
- 3 Preserve or Square Pickle Bottles
- 1 Possible Sewing Machine Oil Bottle
- 1 Green Bottle Neck
- 2 Mason Style Fruit Jar Mouth
- 1 Small Unembossed Prescription Bottle
- 1 Dr. Hostetters Stomach Bitters
- 1 F. Bachrach San Antonio (Soda Water)
- 1 Ochs & Aschbacher San Antonio, Texas (Soda Water)
- 1 Hutchison Soda Mouth
- 1 Prescription Bottle, Tips & Silverhorne, Prescription  
Druggist, San Antonio, Texas
- 1 Possible Peppersauce Bottle (Tabasco)
- 1 Shoulder of Picnic Flask (Liquor)
- 1 P Moller, 01 1 Ecor Cadore ver Christiania (Unidentified)
- 5 Miscellaneous Sherds
- 1 Jar, au Roi des Gourmets, Paris
- 1 Hoods Sarsaparilla

**GLASSWARE**

- 5 Goblets

**MISCELLANEOUS GLASS**

- 1 Pressed Glass Cover
- 3 Sherds of Window Glass
- 1 Lightning Stopper Milkglass
- 1 Button

## LOT 19 (Continued)

## CERAMICS

## STONEWARE

- 4 Meyer Sherds
- 3 Miscellaneous Sherds
- 1 Unglazed Sherd
- 1 Flower Pot Base
- 1 Mexican Sherd

## CHINA

- 1 J.B. Thorn Chemist London John Tarrant Sole Agent  
for New York, Some Type of Cream Jar
- 1 Saucer Scholz's Garden
- 39 Miscellanedus Sherds
- 2 Saucer Sherds
- 8 Plate Sherds
- 3 Cup Sherds
- 2 Bowl Sherds
- 1 Pitcher Sherd
- 1 Wash **Bowl**, Many Sherds

## MISCELLANEOUS CERAMICS

- 3 Doll Heads, 1 Bisque
- 1 Insulator

## METAL

- 1 Horseshoe
- 1 Group of Copperwire

## MISCELLANEOUS

- 2 Bones
- 1 Battery Core Carbon Rod
- 1 Wad of Paper

41 BX 171

LOT 20

Provenience: Removal of Disturbed Fill from Balk

GLASS

BOTTLES

- 1 Bromo Seltzer, Emerson Drug Co. Baltimore
- 1 Dr. Prices Delicious Flavoring Extract
- 1 Davis Vegetable Pain Killer
- 1 Duerler, San Antonio, Texas; SB&G Co. on Base  
Streator Bottle & Glass Co. (1881-1905)

GLASSWARE

- 1 Goblet

CERAMICS

- 1 Cobalt Blue Glazed Marble

METAL

- 1 Wagon Wheel Hub

41 BX 171

LOT 21

Provenience: N 1030/E1000, Level 1

GLASS

BOTTLES

- 1 Base of Probable Wyckoff 's Union Blueing
- 1 Neck "American" Style Preserve Bottle
- 1 Mucilage Bottle
- 1 Body of Prescription Bottle
- 1 Side Panel "Chamberlain Med. Co."
- 1 Possible Mustard Jar

GLASSWARE

- 2 Goblet Sherds
- 1 Probable Salt or Pepper Shaker
- 1 Jigger

MISCELLANEOUS GLASS

- 1 Sherd Construction Glass (Pleated)

CERAMICS

STONEWARE

- 1 Stoneware Sherd

CHINA

- 1 Porcelain Plate Sherd

MISCELLANEOUS

- 1 Oyster Shell

**41 BX 171**

LOT 22

Provenience: N1030/E1000, Level 2

## GLASS

## BOTTLES

- 1 3 Paneled Bottle "Missouri" Paneled Bottle
- 1 Section Chamberlain's Cough Remedy
- 1 Ink
- 1 Prescription Bottle Aug. Schweppe (★  
Crescent Drug Stone, San Antonio, Texas  
A M P & Co. on Base; Adelbert M. Foster & Co.  
Chicago 1895-1911

## MISCELLANEOUS GLASS

- 1 Milkglass Button

## CERAMICS

- 1 Porcelain (White) Doorknob
- 1 Saucer or Butter Dish, Royal Stone China, Maddoek  
& Co.; Burleson, England
- 1 Small Goose Statue

## MISCELLANEOUS

- 1 Battery Core (Carbon)
- 1 Sherd of Slate
- 2 Pieces of Rubber Hose
- 1 Piece of Cotton Rope, Maybe part of a Harness
- 1 Piece of Wetstone



41 BX 171

LOT 23

Provenience: N1030/E1000, Level 3

GLASS

BOTTLES

- 1 Acker's English Remedy for the Throat & Lungs
- 1 Silverthorn & Wagner Prescription Druggist, San Antonio
- 2 The Evans Chemical Company, Proprietors, Cincinnati, Ohio  
U.S.A.
- 1 Syrup of Figs, California, Fig. Syrup Co., San  
Francisco, California
- 1 Unembossed Round Bottle Unidentified
- 3 Clear Unidentified Sherds
- 1 Hutchison Type soda Base ... hrach.. . Antonio, Texas
- 1 Base Large Green Wine Bottle
- 1 Prescription Bottle, Alamo Drug Store, San Antonio
- 1 Cone Ink
- 1 Sharp & Dohme, Caltimore (Medicine)
- 1 Prescription Bottle; Buffalo Oval
- 1 Olive Oil
- 1 Hoyts German Cologne; W. Hoyt & Co., Lowell, Mass.
- 1 Dr. King, New Discovery for Consumption
- 1 J.M. Clark Pickle St. Louis English Pickle or  
Chow-Chow "Missouri i" Styler Bottle
- 1 4 Paneled Extract Bottle "Tall Ball Neck Panel"
- 1 Prescription Bottle Golden Gate Oval
- 1 Large Amber Bottle Neck
- 1 Unidentified Bottle Embossed ...lappe, Apothekenbesize  
..rindorf

Bottles with Labels

- 1 Porter
- 1 Sanfords Blacking
- 1 Bixby Shoe Polish

GLASSWARE

- 1 Glass
- 1 Goblet
- 1 Goblet Body

CERAMICS

STONEWARE

- 3 Meyer Sherds, 1 Meyer Base
- 1 Crock Sherd
- 1 Miscellaneous Sherd

## LOT 23 (Continued)

- 1 Crock Rim Stoneware
- 2 Porcelain Handles
- 1 Saucer Sherd
- 1 Probable Washbowl Sherd
- 1 Unidentified Object Royal Stone China, Johnson Bros.
- 1 Pipe "Dutch Import"

## CHINA

- 1 Bowl, KT&K Co. China
- 2 Lid Sherds
- 2 Lid Handles
- 3 Saucer Sherds
- 1 Serving Bowl Sherd

## METAL

- 1 Unidentified Iron Object
- 1 Lead Bar

## Miscellaneous

- 1 Roast Bone
- 3 Bones
- 1 Shoe
- 2 Pieces Slate

41 BX 171

LOT 24

Provenience: N1030/E1000, Level 4

GLASS

BOTTLES

- 1 Garretts Snuff
- 1 The Mother's Friend, Atlanta, Ga.
- 2 Bromo Seltzers
- 1 Possible Castor Oil
- 1 Philadelphia Oval (prescription Bottle)
- 1 Auc Schweppe, Cressent Drug Store
- 1 Olive Oil
- 1 Lea & Perrins Wochestershire Sauce
- 1 Round Stand Ink
- 1 Cone Mucilgge (?)
- 2 Cone Inks
- 1 Demijohn Mouth and Neck
- 1 Tricopherus for the Skin and Hair
- 1 HoodsSarsaparilla
- 3 Aqua Wine (?)
- 1 Prescription Bottle "Golden Gate" Style
- 1 M. Goldens Leather Cement
- 1 Dr. Hostetters Stomach Bitters
- 1 Light Green Wine
- 2 Dark Green Wine Sherds
- 1 Hutchison soda
- 1 Beer Amber Quart
- 1 Square Clear Unidentified Bottle
- 1 Atwood and Steele Chemical Works
- 1 Bixby Shoe polish Mouth
- 1 Hock Wine Mouth
- 1 Mrs. Winslow's Soothing Syrup
- 1 Picnic Flask (Liquor)
- 1 Ink
- 1 Possible Mineral Water Bottle
- 1 Aqua Wine Bottle Base Sherds
- 1 San Pedro Drug Store, San Antonio, Texas Bottle
- 1 vaseline, Cheeseborough Mfg. Co.
- 1 Mason Type Preserve Jar Mouth
- 1 Sauce or Castor Oil Bottle
- 1 Homeopathic Vial
- 4 Unidentified Sherds
- 1 Jar (Milkglass) Vanilla
- 1 Pickle Bottle
- 1 Mucilage Bottle
- 1 Prescription Bottle (Golden Gate) Style
- 1 Mustard Bottle

## LOT 24 (Continued)

## GLASSWARE

- 1 Pilsner Glass Anhueser Busch
- 1 Pilsner Glass San Antonio Brewing Assn.
- 1 Probable Jelly Tumbler
- 3 Sherds From Goblets
- 1 Mug Sherd
- 1 Mug Handle
- 2 Glass or Goblet Rim Sherds
- 1 Milk Glass Container
- 1 Pressed Glass Bowl

## MISCELLANEOUS GLASS

- 1 Fancy or Ribbed Chimney Rim
- 1 Plain Chimney Rim
- 1 Glass Tube

## CERAMICS

## STONEWARE

- 1 Unglazed Heavy and Thick Rim Sherd
- 1 Unglazed Sherd
- 8 Miscellaneous Sherds, Some possibly Meyer

## CHINA

- 1 Bisque Doll
- 1 Bisque Doll Head
- 1 Bisque Statue
- 1 Bowl Sherd Scholtz Garden
- 1 Soap Dish of Oval Serving Bowl
- 1 Toy Cup Sherd
- 2 Decorated Cups
- 1 Gravy Pitcher (?) Spout
- 1 Handle
- 1 Marble

## METAL

- 1 Piece Insulated Copper Wire
- 1 Piece Steel Wire
- 1 Piece Iron Pipe
- 1 Piece Sheet Metal

## MISCELLANEOUS

- 1 Unidentified Clay Object
- 1 Cut Bone
- 1 Battery Core
- 1 Sherd Mexican Pottery

41 BX 171

LOT 25

Provenience: N1030/E1000, Level 5

GLASS

**BOTTLES**

- 1 Bromo Seltzer
- 2 Soudens Elegant Flavoring Extracts
- 1 Burnetts Standard Flavoring Extracts
- 1 Prescription Bottle (No Embossing)
- 1 Castor Oil
- 1 Possible Mustard Bottle
- 1 Chamberlain's Cough Remedy
- 1 Olive Oil
- 2 4 Panel Tall Ball Neck Bottle
- 1 Hutchison Soda (Sunset Bottling Works) San Antonio, Texas
- 1 Peppersauce or Castor Oil
- 3 Different Sizes Wyckoff's Union Blueing
- 1 Mrs. Winslows Soothing Syrup
- 1 Dr. Hawkins Wild Cherry Bitters
- 2 Beer Bases (Quart)
- 1 Hutchison Soda
- 3 Wine Bottle Bases
- 1 Hock Wine Base
- 2 Bottle Necks
- 1 Picnic Flask (Liquor)
- 1 American Pickle Bottle
- 1 Lightner Detroit Mich. (Perfume?)
- 1 Shoulder Fragment; Dr. Hosteters Stomach Bitters
- 1 Sample Whiskey
- 10 Miscellaneous Sherds
- 1 Cold Cream Jar (Blue)
- 1 Masons Genuine Porcelain Lined Cap (For Mason Jar)
- 1 Square Unidentified Bottle

**GLASSWARE**

- 2 Goblet Sherds
- 1 Shot Glass
- 1 Mug Handle
- 1 Pressed Glass Bowl
- 1 Handle (Cup)
- 1 Piece Art Glass
- 1 Green Salt Shaker
- 2 Pieces of Milkglass
- 2 Pieces of Window Glass
- 2 Milkglass Buttons
- 1 Chimney
- 1 "Jam" Glass
- 1 Bowl

## LOT 25 (Continued)

## CERAMICS

## STONEWARE

- 2 Sherds; 1 Jug Base, One Crock Lip
- 2 Miscellaneous Sherds, 1 - 4 Gallon Meyer Crock

## CHINA

- 1 Bisque Doll Head
- 6 Saucer Sherds
- 8 Plate Sherds
- 2 Bowl Sherds
- 2 Cup Sherds
- 1 Pitcher **KT&K** on Base
- 8 Probable Plate Sherds
- 2 Lid Sherds
- 3 Pot Sherds
- 3 Bowl Sherds
- 5 Oval Plate Sherds
- 1 Toy Cup Sherd
- 50 Miscellaneous Sherds
- 1 Handled Pot Sherd

## MISCELLANEOUS

- 5 Pieces Sheet Metal
- 1 Brick Fragment
- 1 Clothes Pin
- 1 Bone
- 1 Piece of Mexican Pottery

41 BX 171

LOT 26

Provenience: N1030/E1000, Level 6

## GLASS

### BOTTLES

- 1 Wine Bottle Body
- 1 Pinuad Bottle (Toilet Water)
- 1 Quart Picnic Flask (Liquor)
- 1 Pint Picnic Flask (Liquor)
- 1 Screw Cap Catsup
- 1 Pumkin Seed Flask (Liquor)
- 1 Colgate Perfume Co. Bottle
- 1 Beer Bottle ABG Co.
- 1 Coffin Flask (Liquor) Neck
- 1 Unembossed Prescription Bottle

### MISCELLANEOUS GLASS

- 1 Chimney Rim

## CERAMIC

### STONEWARE

- 1 Meyer Jug

### CHINA

- 1 Doll Head
- 1 Plate
- 1 Probable Pitcher
- 1 Bowl
- 1 Cosmetic Cap (Maison Dorin, Paris)
- 1 Possible Doll Cup or Bowl

## MISCELLANEOUS

- 1 Brass Ring: Possible Pull Knob for Furniture
- 3 Bones

**41 BX 171**

LOT 27

Provenience: N1025/E1000, Level 5

GLASS

BOTTLES

- 2 A. Trasks Magnetic Ointment
- 1 Tips & Silverthorn Prescription Druggist, San Antonio,  
Texas
- 1 Souders Elegant Flavoring Extracts Co., Dayton, Ohio
- 1 Atwood & Steele Chicago, Illinois
- 1 Dr. Pitchers Castoria
- 1 Wickoffs Union Blueing
- 1 Bitter Quele Hunyadi Janos
- 1 Quart Amber Beer Neck
- 1 Lea & Perrins Wochestershire Sauce

MISCELLANEOUS GLASS

- 1 Light Green Glass Lamp Shade
- 1 Glass Base
- 1 Handle

CERAMICS

CHINA

- 3 Saucer Sherde
- 2 Plate Sherds
- 2 Bowl Sherds
- 1 Castor Sherd
- Fragments of Large Washbowl or Urn

MISCELLANEOUS

- 2 Bones
- 1 Marble