

Researching Current Data Trends and Amenities to Improve the Community and Wellbeing in Higher Education

Interior Design College of Education - Michaela Gensler, Shayla Gardner, Brooke Ward - Faculty Sponsor: Sally Ann Swearingen

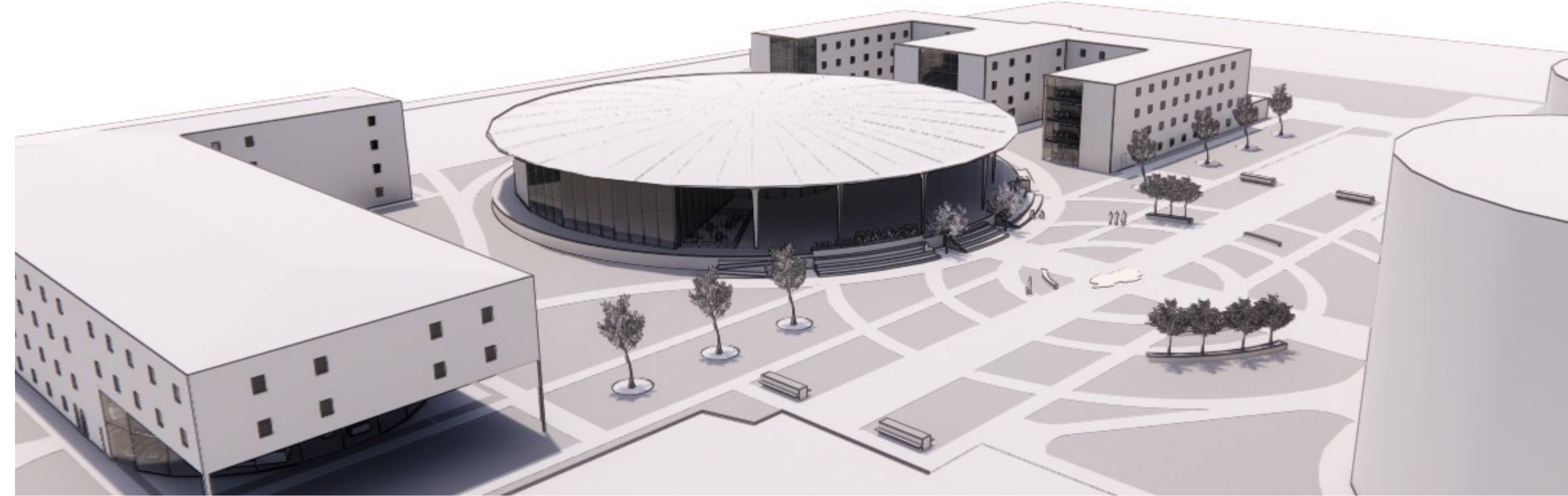
Abstract

The interior design students goal was to design a new residence hall and dining facility for the SFASU campus. The design intention was to create **functional spaces** that allow student **collaboration** and motivate social interactions, while providing features that enhance student academic success and personal development.

Quantitative and qualitative data was collected by conducting surveys regarding the current housing and dining facilities on campus. Results from the current student's surveys and from interviews of student/staff members on campus allowed the team to create the most **functional** plan. Researching current trends and amenities offered at campuses across the country assisted in creating the new design.

Some studies have proven that implementing natural elements enhance quality of life. Therefore we incorporated **biophilic design** by adding a greenery wall and windows for natural light to increase occupant connectivity to the natural environment.

Proposed Site Plan



The current project site was located along Wilson St. and East College St. consisting of Hall 16, East College Cafeteria, and Hall 14.

The proposed site plan will consist of **removing** the cross walk on East college street going from the East College Cafeteria to the Steen Towers. The current crosswalk will be modified into a greenbelt that will allow **safer pedestrian crossing** by **redirecting** automobile traffic around the Steen towers.

Renderings



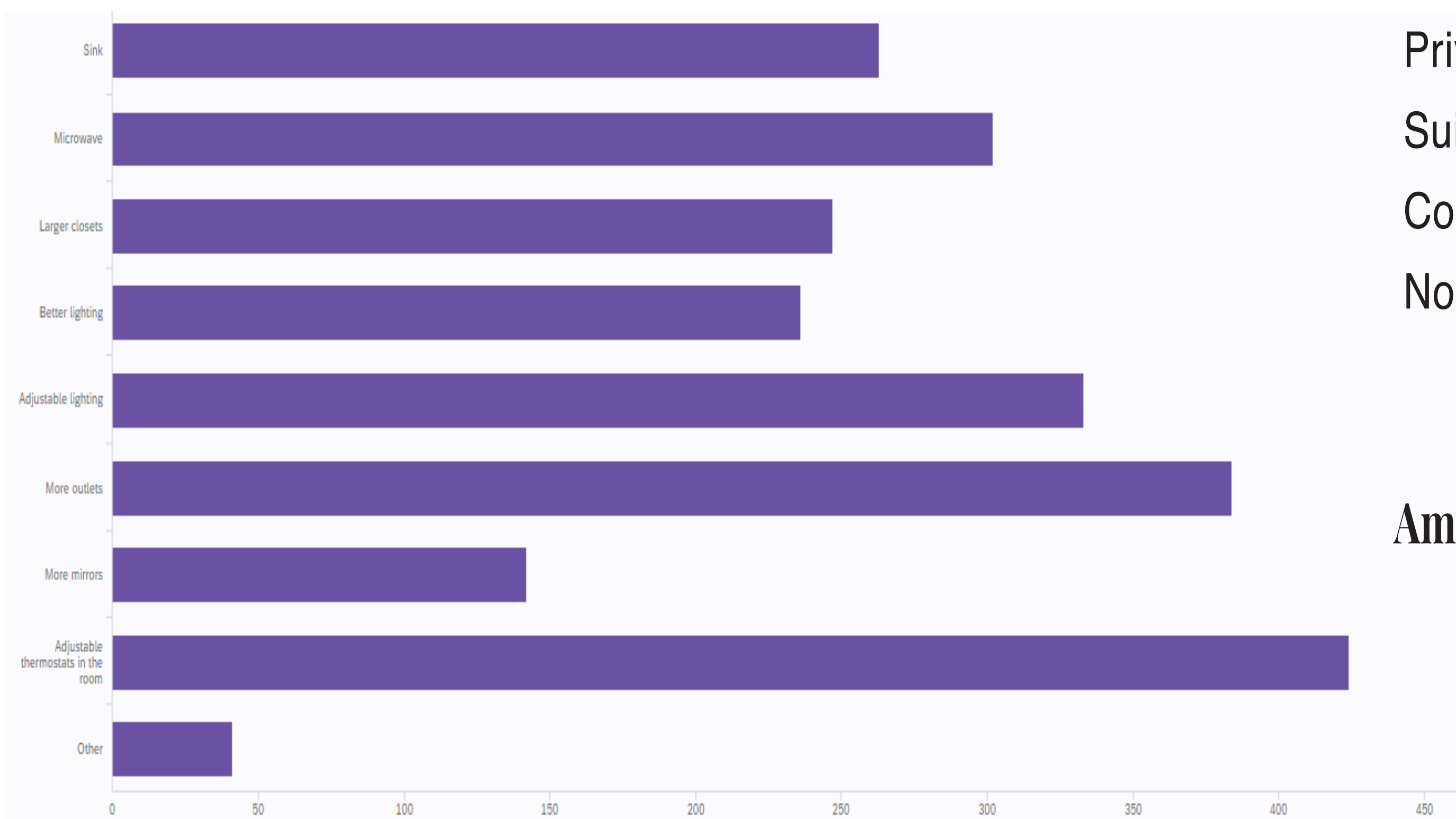
Greenbelt - We designed the greenbelt to increase community within the campus of SFASU.



Lobby - The lobby we designed draws students out of their room and inspires collaboration.

Research and Data

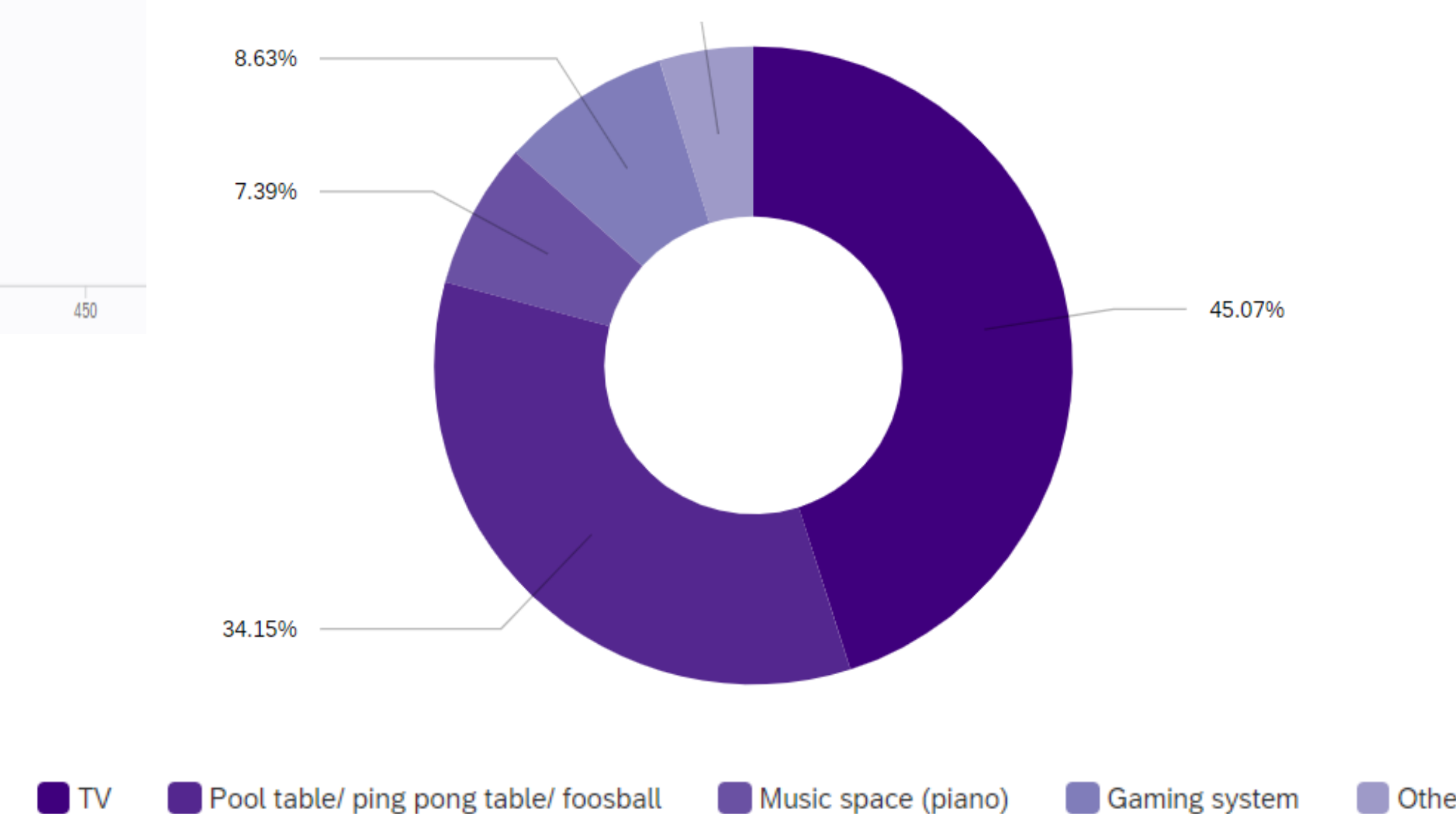
Preferred Amenities in Residence Hall Room



Style of Living Students Prefer



Amenities Preferred by Students in the Common Living Areas

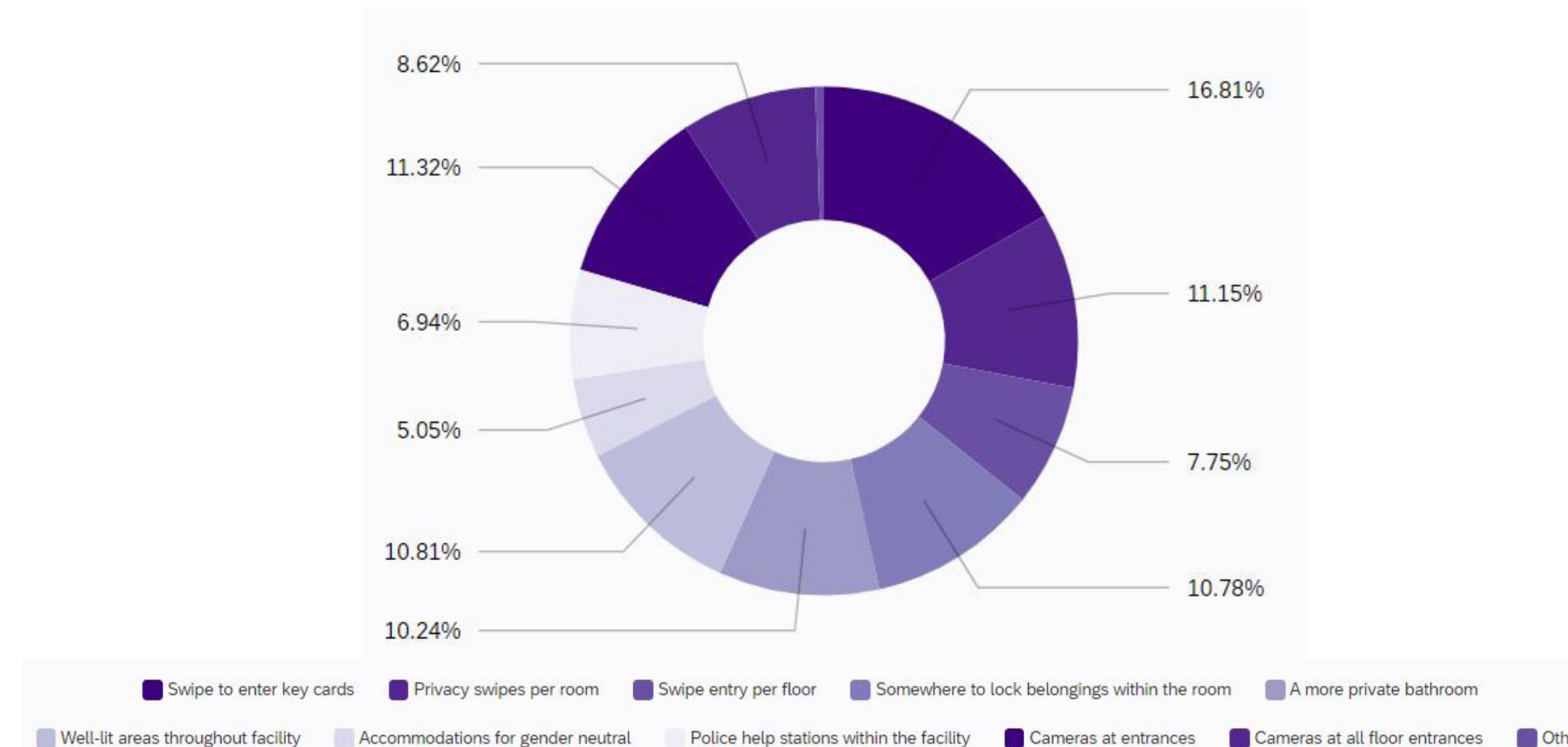


Study Room - The study room, promotes the connectivity to the natural environment using the large windows.



Bedroom - The image above shows the suite style bedroom layout we designed with movable furniture and a neutral color palette.

Amenities Preferred by Students for Safety



Preferred Furniture by Students



The SFA interior design seniors created a survey to gather information about the current living and dining accommodations across campus. The data from 828 student surveys was then used to determine what amenities and features were to be implemented in our building design.