

LET US TRANSPORT YOU!

The College of Fine Arts
at
Stephen F. Austin State University
and the
UNIVERSITY SERIES
present



Book by James Goldman
Music and Lyrics by Stephen Sondheim

Produced Originally on Broadway by Harold Prince
By special arrangement with Cameron Mackintosh

A joint production
of the
Departments of Theatre & Music

November 12-16, 2002
7:30 PM
W. M. Turner Auditorium





Art that *really* performs.

Sales.

Parts.

Service.

Body Shop.

Blue Oval Certified.

2001 President's Award Winner.

Proud Supporter of the SFA College of Fine Arts.

TIPTON
FORD-LINCOLN-MERCURY

www.tiptonford.com

The University Series

2002 - 2003 Let Us Transport You

The Griffith Gallery is open Tuesday through Sunday, 12-5 pm
Events in W. M. Turner Auditorium; All performances at 7:30 pm

- August 26 - September 5. *Eyes on Italy*
Griffith Gallery
- September 8 - October 17. . . . *Aesthetic Themes Curated by Ted Kincaid,*
Directions in Contemporary Art
Griffith Gallery
- October 12. *Orchestra of the Pines*
- October 21 - November 27. *Sam Wang Photo Silkscreen Prints, 1966-1977*
Griffith Gallery
- November 12 - 16. *Follies by Goldman and Sondheim*
SFA Music and Theatre Departments Production
- November 19. . *Colonel Arnald Gabriel Conducts the SFA Wind Ensemble*
- November 25 & 26 . . . *The Nutcracker Performed by the Moscow Ballet*
National Touring Production
- January 18. *Cinderella by Rodgers and Hammerstein*
National Touring Production
- January 26 - March 27. *Refined III, Small Forms in Precious Metals*
Griffith Gallery
- January 30. *Nexus Master Percussionists*
National Touring Production
- February 7. *Claire Bloom in The Women of Shakespeare*
National Touring Production
- March 3. *The Second City Players*
National Touring Production
- March 31 - April 24. *Jerry Uelsmann and Maggie Taylor: Recent Works*
Griffith Gallery
- April 22 - 26. *The Seagull by Anton Chekhov*
SFA Theatre Department Production

For information, call (936) 468-6407 or 1-888-240-ARTS



SFA ALUMNI FOUNDATION

Fine Arts Scholarships

Representing nearly \$400,000
that annually benefit students
in the College of Fine Arts

Kermet & Margaret Agee Scholarship

Elsie Arscott Scholarship

Bridges/McKinney Scholarship

Perry & Martha Brittain Scholarship

Zack Brittain Scholarship

Zelma Childers Award

Wanda Cochran Scholarship

Ed & Gwen Cole Theatre Scholarship

J.T. Cox Scholarship

Melba Cranford Scholarship

John & Doris Daniel Scholarship

John Dickson Scholarship

E. Diane Ford Scholarship

W.H. & Bennie Atkinson Gray Scholarship

Emily Hargraves Scholarship

Charles Lee Hill Scholarship

James G. & Doris Jones Scholarship

Brian LaBarbera Memorial Scholarship

Lenville Martin Award

Pat Roberdeau Mast Scholarship

Brad Maule Award

Sandy McGrath Scholarship

Mamie Middlebrook Scholarship

Mel Montgomery Scholarship

Ida Pritchett Scholarship

Diane, Court, and Casey Fouts Scholarship

Mary Osborne Ray Scholarship

Karl Schlicher Award

Barbara Schoenewolf Scholarship

SFA Theatre Scholarship

Simpson/Miller Scholarship

Aaron Smith Scholarship

Jim & Sandy Snyder Scholarship

William M. Turner Scholarship

Stephen Weeks Scholarship

Anonymous Scholarship



SFA Alumni Association • Box 6096-SFA Station • Nacogdoches, TX 75962
(936) 468-3407

www.sfaalumni.com

SFA&U Foundation, Inc. Endowments

Gifts that Endure and continue to give for future generations...

Art is very personal. It has many different formats, which allows us to individually experience the beauty of its presentation. The following endowments have been established in the SFASU Foundation, Inc. for the College of Fine Arts. Gifts to these endowments and other programs will assure this beautiful and diverse experience continues for many years to come.

Generous benefactors of SFA and its programs established the Eloise Chambers Adams Scholarship in Art in her honor. The purpose of this endowment is to support a scholarship for an undergraduate student in Art. The scholarship is awarded annually on the basis of both artistic promise and need of the student.

Ms. Adams' devotion and tireless work has been instrumental in SFA being recognized as having one of the finest Art programs available in East Texas. We applaud her and the generosity of the benefactors who have made this endowment possible.



Claudine W. McKinney has established two endowments in memory of her late husband, Jack McKinney — The Jack McKinney Memorial Scholarship in Art and in Music. These scholarships are given annually for the support of undergraduate students in the Art and Music Departments. According to Mrs.



McKinney, "... Jack so loved Art and Music... I know he would be so proud and pleased by the establishment of these two scholarships..." We appreciate and thank the McKinney family for their continued support of SFA.

Professor and Mrs. Robert Mann have established the Robert C. Mann Music Scholarship Endowment in recognition of his tenure since 1966 as a faculty member in the Department of Music. This scholarship is awarded to a first semester freshman year student and will



continue annually for a total of four consecutive years. According to professor Mann, the purpose of this scholarship is to be used as an aid in recruiting quality music students. The College of Fine Arts is so fortunate to have talented and caring faculty members, and it is very special when one of its own gives back so much. Bravos go to Professor Mann for his loyalty to the students and the programs at SFA.



Tom and Peggy Wright established the Wedgeworth-Wright Endowment for the Arts in memory of Monnie and Belle Wedgeworth. The purpose of this endowment is to support endeavors relating to Music and the performing

Arts programs and shall be given on a priority basis. This endowment annually supports the University Series, the Orchestra of the Pines, the Friends of Music, and enables SFA to bring quality entertainment to the university and the community. The philanthropic activities of Tom and Peggy are well known, and SFA is so fortunate to have them as benefactors.

SFA&U Foundation, Inc.

PO Box 6092 • Nacogdoches, TX 75962 • 936-468-5406



S F A



Dear Friends,

I am very happy to welcome you to this performance, one of many in the 2002-2003 season of the College of Fine Arts' University Series. Stephen F. Austin State University takes pride in its role as a cultural center for the East Texas region and we are pleased to be able to offer a wide variety of performing and visual arts events here on our campus. The arts play a special role in defining our community, our culture, and our humanity; the arts are important to everyone.

It is only with the help of dedicated community people, our Friends of the Arts and our corporate sponsors that we are able to present such a high quality season of events. We are grateful for your support. With friends and partnerships like these, we can accomplish great things in the arts!

Thanks for being here tonight; I know you will value this experience.

Sincerely,

Tito Guerrero III
President



Art that *really* performs.

Dear Friends of the Arts,

I would like to welcome you to another fine performance at the Stephen F. Austin State University College of Fine Arts.

Tipton Ford-Lincoln-Mercury is very proud to play a part in bringing you a new and exciting season of the best the fine arts has to offer. As always, this year's schedule is filled with art that really performs. So sit back, relax and enjoy the show.

Sincerely,

Neal Slaten
Tipton Ford-Lincoln-Mercury

TIPTON
FORD-LINCOLN-MERCURY

www.tiptonford.com



**OFFICE
SOLUTIONS**

**Computer Networks
Copiers
Phone Systems
Fax
Supplies**

Phone: 560-6500

SIMPLE PEACE OF MIND.

JMG

**JOE MAX GREEN
INSURANCE CONCEPTS**

564-0221

3310 N. UNIVERSITY

WYATT'S



OFFICE CITY

America's Office Supplier

- OFFICE SUPPLIES
- FURNITURE
- MACHINES
- PRINTING
- GIFTS



**Xerox
Authorized
Sales Agent**

564-2437 • 204 E. Pilar Street • Downtown Nacogdoches
www.wyattsofficecity.com

JOHNSON

FURNITURE AND APPLIANCES



Fisher & Paykel

Amana



MAYTAG

LAZ-BOY

106 East Main, Nacogdoches

VIKING

Magic Chef

564-6471

JENN-AIR

RAY JOHNSTON, L.M.S.W. - A.C.P. Counseling Services

- Individual, Family, Marital & Divorce; Children, Adolescents
- Depression, Stress/Work/School and Relationship Issues
- Alcohol and Drug Problems
- Most insurance accepted including Medicare, Medicaid, CHAMPUS/Tricare
- Negotiable Rates
- Close to SFA Campus

24 hours - 569-8570
fax: 560-1144

Our reputation speaks for itself.

HOMEOWNERS • WEDDINGS • PARTIES • CONTRACTORS

UNIVERSITY RENTAL

936-560-0800 1-800-936-1350

JIM ELDER, OWNER

732 N. UNIVERSITY

EXCEL

CAR WASH
AUTO DETAIL
QUICK LUBE

"Your 100% soft cloth Full Service Professional Car Wash"

EXCEL QUICK LUBE
1620 SOUTH STREET
NACOGDOCHES
560-3457

EXCEL CAR WASH
& QUICK LUBE
4101 NORTH STREET
NACOGDOCHES
560-1453

EXCEL QUICK LUBE
2601 NORTH STREET
NACOGDOCHES
552-7279

*The SFA College of Fine Arts, Department of Music, and
University Series present:*

*The SFA Wind Ensemble
with guest conductor,
**Colonel
Arnald Gabriel**
(USAF, retired)*



*Tuesday, Nov. 19, 7:30 pm
W.M. Turner Auditorium*

*Tickets: \$15 adult, \$10 senior, \$5 student
For more info, call (936) 468-6407*

*Sponsored
in part by:*



*Creating a masterpiece . . .
one portfolio at a time.*



Edward Jones

INVESTMENTS



Steven W. Barber
CFP, AAMS



Gary L. Russell



Shane Pittman

777 East Austin
560-2702

4635 Stallings Drive,
Suite 101, 560-4904

Member New York Stock Exchange, Inc. and Securities Investor Protection Corporation.
Serving individual investors from more than 8,600 offices nationwide, Canada and The UK.
Website: www.edwardjones.com

Your Community.
Your Paper.



The Daily Sentinel

For subscription or advertising
information call

564-8361

www.dailysentinel.com

SFA DEPARTMENTS OF THEATRE AND MUSIC
and the
COLLEGE OF FINE ARTS
present

FOLLIES

Book by James Goldman
Music and Lyrics by
Stephen Sondheim

Produced Originally on Broadway by Harold Prince
By special arrangement with Cameron Macintosh

Directed by

C. W. Bahs & Alan Nielsen

Musical Director: Stephen Lias

Choreography by Juanita Finkenberg

Scenic Design by Tomy Matthys

Costumes Designed by Angela Bacarisse

Lighting Designed by Joyous Israel & Luis Ramirez

Sound Designed by Zachary Allen Whitaker

Hair & Makeup Designed by Toby Drake & Dusti Meeks

Stage Manager: Stacey Flores

"Follies" is presented through special arrangement with and
all authorized performance materials are supplied by
Music Theatre International, 421 West 54th Street, New York, NY 10019
Tel.: (212) 541-4684 Fax (212) 397-4684 www.MTIShows.com

Tuesday-Saturday, November 12-16, 2002

7:30 p.m.

W.M. Turner Auditorium

The Cast

Ben	Joshua Estrada *
Buddy	Eric Hopper
Phyllis	Kim Geiter *
Sally	Angela Parsons *
Young Ben	Austin Hebert
Young Buddy	Justin Saenz
Young Phyllis	Natalie Frances Melcher
Young Sally	Emma Burford
Carlotta	Melissa Anastasia Paschke
Solange	Bernadette Bishop
Weismann	J. R. Ramirez *
Hattie	Deborah Dalton
Stella	Shari Watterston
Emily Whitman	Shirley R. Watterston
Theodore Whitman	Tomy Matthys
Vincent	Stan Bobo
Vanessa	Lindsay Tilkemeier
Heidi	Debbie Berry
Young Heidi	Kelli Mikeska
Roscoe	Richard Berry
Chorus Girl 1/Young Vanessa/Guest/Young Dee Dee	Verity Butler
Chorus Girl 2/Waitress 1/Young Stella	Dionne Atwill
Chorus Girl 3/Christine	Lyndsey Doolen *
Chorus Girl 4/Meredith	Jacquelyn Claire Green
Chorus Girl 5/Deedee	Sarah Carpenter
Chorus Girl 6/Waitress 2/Young Carlotta	Theresa Pennell
Chorus Boy 1/Young Vincent/Photographer	Matt Abshire
Chorus Boy 2/Major Domo	Justin Cole
Chorus Boy 3/Max	Geoffrey C. Gibson
Chorus Boy 4/Kevin	Steven Piechocki
Chorus Boy 5/Mr. Christine	Matthew Smith
Chorus Boy 6/Mr. Meredith	David Endter
Showgirl 1/Angel	Leigh Erin "Nix" Ward
Showgirl 2	Carneithia "Nikki" Breanna Anthony
Showgirl 3	Lisa Gregory
Showgirl 4	Kimberlee Martin *
Showgirl 5	Jennifer Susan Fortson *
Showgirl 6/Young Meredith	Stephanie Nichole Capasso

The Setting

1971.

A Party on the stage of the Weismann Theatre,
New York.

There will be one ten-minute intermission.

The Musicians

Conductor Stephen Lias
Vocal Coach for Soloists Deborah Dalton
Chorus Master Michael Dean
Orchestra Manager/Music Assistant Joseph Williams
Accompanists Sarah Ferris, Joseph Williams

Orchestra

Flute Pamela Smith
Matthew Dempsey
Clarinet Suzanne Ray
Shelley Gibson
Saxophone James C. Malik
Joshua B. Ferman
Jennifer Beard
Trumpet Bryan Gripp
Caleb Estrada
Trombone Nick Bell
Chris Witt
Violin Laura Bianco
Lori Banks
Tyler Crayton
Viola Raymiah Jackson
Patt McClendon
Cello Elizabeth Yjosvold
Bass Stephen Adams
Percussion Kenneth Peters II
Piano Joseph Williams
Sarah Ferris

Musical Numbers

Act I

Beautiful Girls	Roscoe and Company
Don't Look at Me	Sally and Ben
Waiting for the Girls Upstairs	Buddy, Ben, Phyllis, Sally Young Buddy, Young Ben Young Phyllis, and Young Sally
Rain on the Roof	The Whitmans
Ah, Paris!	Solange
Broadway Baby	Hattie
The Road You Didn't Take	Ben
Bolero d'Amour	Danced by Vincent and Vanessa
In Buddy's Eyes	Sally
Who's That Woman?	Stella
I'm Still Here	Carlotta
Too Many Mornings	Ben and Sally

Act II

The Right Girl	Buddy
One More Kiss	Heidi and Young Heidi
Could I Leave You?	Phyllis

Loveland

THE FOLLY OF LOVE

Loveland	Company
----------------	---------

THE FOLLY OF YOUTH

You're Gonna Love Tommorrow	Young Ben and Young Phyllis
Love Will See Us Through	Young Buddy and Young Sally

BUDDY'S FOLLY

The God-Why-Don't-You-Love-Me-Blues	Buddy, "Margie" and "Sally"
---	-----------------------------

SALLY'S FOLLY

Losing My Mind	Sally
----------------------	-------

PHYLLIS'S FOLLY

Uptown, Downtown	Phyllis and Company
------------------------	---------------------

BEN'S FOLLY

Live, Laugh, Love	Ben and Company
-------------------------	-----------------

DIRECTORS' NOTE

Musical theatre is, perhaps, America's single most important contribution to the history of drama. It is a province where problems seldom exist and those that do are quickly forgotten in a myriad of tuneful phrases, and bright, bouncy orchestrations. We all know why we go to the theatre to see a musical: it's light, entertaining, and refreshing. We can escape our own lives and delight in "make believe."

Nothing in the American theatre captured that escapism better than the Follies. The Follies was a time when beautiful girls paraded across the stage in eye-popping apparel, accompanied by a collage of dazzling tunes, bright lights, and lavish décor. A time when innocence and romance clouded many a young man's mind as he waited anxiously by the stage door for the chance to see his favorite showgirl. Logic and reason were often abandoned as the glamour of the Follies led many to believe "that everything was possible and everything made sense." The Follies represented the state of mind of America between the two world wars. Up until 1945, America was the good guy, everything was idealistic and everyone was hopeful.

But the Follies are now a thing of the past: a time which we nostalgically remember what was once and never will be again. The bright seductions of the show-biz world shaped an impossible utopia for many whose lives revolved around the Follies. Unfortunately, utopias do not last forever. The dreams they are made of crack all too quickly, leaving a series of lost hopes, eroded energies and self-lacerations in place of the optimism of youth. We all make mistakes with our lives. Our success truly depends on whether we can accept those mistakes or whether we let them haunt us through the years to the point of regression. The ghosts of our past are dead. If we continue to look in the rearview mirror, we are sure to crash and burn. Our production of *Follies* will do just that.

In short, this is a serious musical--it is about us, and this musical is simply a metaphor. This is the story of four people in their early fifties: two ex-show girls and the stage-door-Johnnys whom they married thirty years ago. Phyllis married Ben, and Sally, Buddy. But Sally, who was in love with Ben, retains her fantasies of rekindling her long-ago affair with him. Through them we see that life is filled with all sorts of human folly. Like the madness of being young and wanting to be older. Of being older and wanting to be younger. Of desiring the fame and success that money brings, and thinking they will necessarily lead to any real happiness. Of making bargains with life, and mistaking them for maturity. Of loving the wrong person. And of trying to love anyone without first loving yourself.

As a country our dreams may be tarnished and we may have witnessed the collapse of the American Dream. This is a play about how all hopes tarnish and how if you live on regret and despair you might as well pack it in, for to live in the past is foolish. For us, this is a musical summed up in two songs: "The Road You Didn't Take," and "I'm Still Here." In the aftermath of 9/11 we stare out in to the "rubble." And, like Ben and Sally, Phyllis and Buddy, we are still here. And, like them, we will endure.

--C.W. Bahs & Alan Nielsen

About the Playwrights

Stephen Joshua Sondheim (Composer/Lyricist)--known as the theatre's poet laureate--was born in New York on March 22, 1930. He took an interest in music early in life, and by the age of ten had already decided that he wanted to be a Broadway composer and lyricist. In 1940, Sondheim's parents divorced, and he moved with his mother to a farmhouse in Bucks County, Pennsylvania. By a stroke of luck it so happened that their house was next door to the summer home of Oscar Hammerstein II. The seasoned theatre veteran took an avid interest in Sondheim's musical ambitions and frequently regaled his young neighbor with stories of his own experiences. Hammerstein not only helped Sondheim learn his craft, but also helped him to get his foot in the door. One night at a party Sondheim met Arthur Laurents, who was in the market for a lyricist for his new show, *West Side Story*. Sondheim considered himself more of a composer than a lyricist and debated whether or not to take the job, but in the end his mentor convinced him it would be a good experience. His work on *West Side Story* garnered him much acclaim as a lyricist and put him in line for similar work on Jule Styne's *Gypsy* and Richard Rodgers' *Do I Hear a Waltz?* However, what he really wanted to do was compose. Sondheim finally got his chance with *A Funny Thing Happened on the Way to the Forum*, a musical based on the farces of the Roman playwright Plautus. This success paved the way for Sondheim to write both the lyrics and music for *Company*, *Follies*, and *A Little Night Music*.

Follies opened in New York on April 4, 1971, immediately captivating both audiences and critics alike. Only one critic, Clive Barnes of the *New York Times*, wrote a negative review. The *Times* received so many letters of protest from outraged theatre-goers that they were forced to print a more complimentary review from another critic. Despite Mr. Barnes's opinion, *Follies* ran for a total of 522 performances before it was moved to the new Shubert Theatre in Los Angeles. In the spring of 1972, *Follies* won seven Tony awards, including those for Best Musical, Best Music & Lyrics, and Best Choreography. Sondheim went on to write words and music for such shows as *Sweeney Todd*, *Sunday in the Park With George*, and *Assassins*. Stephen Sondheim received the New York Award for Lifetime Achievement from *New York Magazine* in 1997 and shared a Pulitzer Prize with James Lapine for *Sunday in the Park With George*.

James Goldman (Book) was born in Chicago in 1927. He graduated from the University of Chicago and did his post-graduate work at Columbia. It was while studying at Columbia that Goldman experienced the life of a "stage door Johnny" first hand: this would later become his inspiration for *Follies*. It was also during this time that he was drafted for Army service in Korea. When he returned to civilian life, he decided to become a playwright. Goldman is perhaps best known for his plays *The Lion in Winter* (the screenplay of which won him an Oscar in 1968) and *They Might Be Giants*. Other screenwriting credits include *Robin and Marian* and *White Nights* (which starred Mikhail Baryshnikov and Gregory Hines). James Goldman died of a heart attack October 28, 1998, in New York City at the age of 71.

--Kimberlee Martin, Dramaturg

About the Cast

Matt Abshire (Chorus) is a junior with a double major in Theatre and Advertising. Matt was last seen in *...And Miss Reardon Drinks A Little* and in *Copper Camp*. His Downstage credits include *Levitation* and *Lysistrata*.

Carneithia Breanna Anthony (Showgirl) is a sophomore Theatre major from John Tyler High School, where she was in numerous productions. Nikki also choreographed *Bye Bye Birdie* at Minneola Community Theater. *Follies* is her SFA debut.

Dionne Atwill (Chorus) is an exchange student from Rose Bruford College in London, England. Some of Dionne's credits include *Guys and Dolls*, *A Midsummer Night's Dream*, *As You Like It*, and *Jake's Women*. This is Dionne's first show at SFA.

Debbie Berry (Heidi) is an SFA alumna and faculty member in Voice. She has performed as a soprano soloist with orchestras in Denver, Kansas City, and across Texas. Among her theatre and opera credits are *The Sound of Music*, *My Fair Lady*, *The King and I*, *Guys and Dolls*, *La Traviata*, *La Bohème*, and *Don Pasquale*.

Richard Berry (Roscoe) is Dean of the College of Fine Arts at SFA. He has appeared as a recitalist and as a soloist around the country and has directed operas at SFA and elsewhere. Local audiences will recognize him from performances at Lamplite Theatre, including major roles in *Fiddler on the Roof*, *Anything Goes*, *Kiss Me, Kate*, and *Carousel*.

Bernadette Bishop (Solange) is an American Theatre Arts student from England. Bernie's credits include Dolly in *Orpheus Descending* and Nancy in *Oliver*. She is a member of the Original Cast; *Follies* marks Bernie's Mainstage debut.

Stan Bobo (Vincent) teaches in SFA's Department of Kinesiology and Health Science and is a resident choreographer for the SFA Repertory Dance Company. He has choreographed for numerous university and community theatre productions.

Emma Burford (Young Sally) is another exchange student from Rose Bruford College. Emma has appeared in various productions in England, including *Fame*, *Godspell*, *Chess*, *Oliver*, *The Wiz*, *Joseph...*, and *The Sound of Music*. Emma is a member of the Original Cast, and *Follies* is her Mainstage debut.

Verity Butler (Chorus Girl) is a senior Theatre major from Houston. Mainstage and Downstage credits include *...And Miss Reardon Drinks a Little*, *Theme and Variation*, *Halftime at Halcyon Days*, *Wanda's Visit*, and *Ballerinas Choose Your Weapons*. *Follies* will be Verity's final show at SFA, as she graduates in December.

About the Cast (continued)

Stephanie Nichole Capasso (Showgirl) is a senior from Houston with a double major in Theatre and Math. Stephanie's credits at SFA include *Talking With...*, *Veronica's Room*, and *Summer and Smoke*. She will be dramaturg for this spring's production of *Bacchae*.

Sarah Carpenter (Chorus Girl) is a Rose Bruford Student from London, England. In England, Sarah was seen in *Guys and Dolls*, *Pantomime*, *Me and My Girl*, *Chess*, *Annie*, and *101 Dalmations*. *Follies* is Sarah's first show at SFA.

Justin Cole (Chorus) is a freshman Theatre major from Nacogdoches High School. This fall, Justin played multiple roles in *Medicine Show* in the Downstage and is also a member of The Original Cast. *Follies* is Justin's Mainstage debut.

Deborah Dalton (Hattie, Vocal Coach) joined the SFA Music faculty in 1991. In addition to solo appearances with symphony orchestras and choral groups throughout Texas, she has performed in opera and musical theatre. Her credits include *Così Fan Tutte*, *Die Fledermaus*, *The Music Man*, *Anything Goes*, *Nunsense*, *Cinderella* and *Oklahoma*.

Lyndsey Doolen (Chorus) is a junior Theatre major from Beaumont. Lyndsey's Mainstage credits include *Cabaret*, *The Good Person of Setzuan*, *Talking With...*, *Dancing At Lughnasa*, *Rhinoceros*, and *...And Miss Reardon Drinks a Little*. She is also a member of the Original Cast.

David Endter (Chorus) is a senior Theatre major from Copperas Cove. David has appeared in *The Good Person of Setzuan*, *Cabaret*, *Flop Cop* and *Blithe Spirit*. *Follies* is David's final show at SFA before his internship in Frankfurt, Germany.

Joshua Estrada (Ben) is a senior Theatre major from Rose Bud, Arkansas. Josh was last seen in *The Miss Firecracker Contest* in SFA's Summer Rep. Other credits include *Dancing at Lughnasa*, *The Good Person of Setzuan*, *Table Settings*, *I Am a Camera*, and *Lysistrata*. Josh has also been a member of the Original Cast for three years.

Jennifer Susan Fortson (Showgirl) is a junior Theatre major with a minor in Educational Interpreting. Jen was seen in *The Sex Education of My Mother* and *Hamlet*. Her Downstage credits include *High Tide*, *Slop Culture*, *Children of a Lesser God*, and *Wreck on the 5:25*.

Kim Geiter (Phyllis) is a senior Theatre major from Texarkana. Kim has just returned from a year-long internship with Dallas Children's Theater, where she was in *Lilly's Purple Plastic Purse*, *Hans Brinker*, and *Sideways Stories from Wayside School*. SFA credits include *Bus Stop*, *Talking With...*, *Terra Nova*, *Summer and Smoke*, and *Princess and the Rose*. *Follies* is Kim's final show at SFA, as she graduates in December.

About the Cast (continued)

Geoffrey C. Gibson (Chorus) is a sophomore Theatre major from Austin. Gibson was last seen in *Copper Camp* in the Festival of New American Plays. Gibson is also a Lance Corporal in the United States Marine Corps.

Jacquelyn Claire Green (Chorus, Assistant Choreographer) is a sophomore Theatre major from Laporte. Jacquelyn was last seen as Sammii in *Proposals* in the Downstage and has worked various crews for the Mainstage. *Follies* is Jacquelyn's Mainstage debut.

Lisa Gregory (Showgirl) is an American Theatre Arts student from Rose Bruford College in London, England. In England, Lisa appeared in various productions with the Bexley Centre for Music and Dance. *Follies* is Lisa's first show at SFA.

Austin Hebert (Young Ben) is a freshman Theatre major from Montgomery. Austin was seen in *Tom Sawyer*, *Strider*, *Tales from Arabian Nights*, and *Grapes of Wrath* at Montgomery High School. *Follies* is Austin's SFA debut.

Eric Hopper (Buddy) is a junior Theatre major from Blue Ridge. Eric's Mainstage credits include *Terra Nova*, *Dancing at Lughnasa*, *Visit to a Small Planet*, and *Copper Camp*. Eric has also been a member of the Original Cast for two years.

Kimberlee Martin (Showgirl, Dramaturg) is a senior Theatre major from Lindale. Kim has been a member of the Original Cast for two years. Her Downstage credits include *Lysistrata* and *Labor Day*. Kim was also in *The Best Little Whorehouse in Texas*, *Moon Over Buffalo*, and *Dancing at Lughnasa* at Tyler Junior College. *Follies* is Kim's Mainstage debut.

Tomy Matthys (Theodore Whitman, Scenic Designer) was Best Actor in Texas as a freshman in college, but then he discovered scenic design. He has not acted much of late--1997's *King Lear* was an exception--but he has designed over 200 shows at SFA. Recent scenic design credits include *Rhinoceros*, *Dancing at Lughnasa*, *The Good Person of Setzuan*, *Cabaret*, *Summer and Smoke*, and *A View from the Bridge*.

Natalie Frances Melcher (Young Phyllis) is a freshman Theatre major from Houston, where she was active in the theatre program at Alief Hastings High School. Natalie is a member of the Original Cast, and *Follies* is her Mainstage debut.

Kelli Mikeska (Young Heidi) is a graduate student in Vocal Performance here at SFA. Kelli has been seen in the chorus of *The Elixir of Love*, *Carmen*, and *Falstaff*, as well as Hatta in *Bartered Bride*, and Jenny Hildebrand in *Street Scene*.

About the Cast (continued)

Angela Parsons (Sally) is a senior Theatre major from Fort Worth. She was last seen in ...*And Miss Reardon Drinks a Little*. Other Mainstage credits include *Rhinoceros*, *Visit to a Small Planet*, and *Cabaret*. Angela has been a member of the Original Cast for four years and was seen in the Downstage's *Children of a Lesser God*, *Seven Menus*, and *Misreadings*.

Melissa Anastasia Paschke (Carlotta) is a junior transfer from the University of Washington. Missy has appeared professionally with such theatres as Northwest Children's Theatre, and Murder, Mystery, and Mayhem Dinner Theatre, both in Portland, OR. *Follies* is her SFA debut.

Theresa Pennell (Chorus, Assistant Choreographer) is a junior Theatre major from the Republic of Singapore. Theresa has worked on various Mainstage crews and played Kylie in *The I Word: Interns* in the Downstage. *Follies* is Theresa's Mainstage debut.

Steven Piechocki (Chorus) is a junior Theatre major from Nacogdoches. Pie was last seen as Dudard in *Rhinoceros*. Other SFA credits include *The Foreigner*, *Dwarf Tossings*, and *Women and Wallace*. Pie is also a member of the Original Cast.

J.R. Ramirez (Weismann) is a junior Theatre major from Garland. J.R. was last seen as Will in *Bus Stop*. Other Mainstage credits include *Terra Nova*, *Hamlet*, and *The Sex Education of My Mother*. He has also been in several Downstage productions such as *Lysistrata*, *Levitation*, *Barry*, *Betty*, and *Bill*, and *The Playwright's Prerogative*.

Justin Saenz (Young Buddy) is a junior Theatre major who transferred from South Plains College in Levelland. There Justin was seen in *The Sound of Music*, *1776*, *Never the Sinner*, *A Christmas Carol*, and *Side Man*. Justin is a member of the Original Cast; *Follies* marks his SFA debut.

Matthew Smith (Chorus) is a sophomore Theatre major from Leander. Matt was seen in *Medicine Show* and *Sure Thing* in the Downstage. Matt is a member of the Phi Mu Alpha music fraternity at SFA as well as the Original Cast. *Follies* is Matt's Mainstage debut.

Lindsay Tilkemeier (Vanessa) is a sophomore Theatre major from Cypress. Lindsay was the movement assistant for *Rhinoceros*. She was the stage manager for *The Miss Firecracker Contest*, *Sure Thing*, and the Original Cast (spring '02). Lindsay also assistant stage managed *The Lover*, *The Case of the Crushed Petunias*, and *Ghosts*.

Leigh Erin Ward (Showgirl) is a freshman Theatre major from Lake Charles, LA. Nix has studied dance with The Glenda Moss Academy for fifteen years. *Follies* is her SFA debut.

About the Cast (continued)

Shari Watterson (Stella) is a Lecturer in Theatre at SFA. She is in her second year as Assistant Director of the Original Cast, for which she performed for two years. Shari has directed at both SFA and Nacogdoches High School. Among her acting credits are roles in *Big River*, *Fiddler on the Roof*, *Once upon a Mattress*, and *Annie*.

Shirley R. Watterston (Emily Whitman) has been on SFA's Music faculty for over 25 years. She was Music Director or Assistant Music Director for seventeen SFA musicals. She has played leading roles in such plays and musicals as *Fiddler on the Roof*, *You Can't Take It with You*, and *BeauJest*. Shirley received SFA's Teaching Excellence Award for 2002.

About the Artistic Staff

Dr. C. W. Bahs (Director) is Theatre Department Chair at SFA and formerly held that position at the University of Wyoming. He was honored as "Outstanding Alumnus" of Bowling Green University. Among his SFA productions have been *Merchant of Venice*, *Man for All Seasons*, *Madwoman of Chailot*, *Glass Menagerie*, *I Do! I Do!*, *A Streetcar Named Desire*, *King Lear*, *Miracle Worker*, and *Cabaret*.

Dr. Alan Nielsen (Director) is a Professor of Theatre at SFA and also directs and writes for the Original Cast. He is a published author, playwright and composer/lyricist (four of his plays have been staged in New York). SFA productions include *Gypsy*, *Reckless*, *On the Verge*, *Into the Woods*, *Tomfoolery*, *The Musical Comedy Murders of 1940*, *Moon Over Buffalo*, *Visit to a Small Planet*, *Rhinoceros*, and *Bus Stop*.

Angela Bacarisse (Costume Designer) has been a cutter/drafter with the Texas Shakespeare Festival since 1996. She has also worked with such companies as the Mac-Hayden Music Theatre, Playhouse on the Square, and Theatre in the Square. Her SFA design credits include *Dancing at Lughnasa*, *Hamlet*, *Rhinoceros*, *Falstaff*, *Bus Stop*, *...And Miss Reardon Drinks a Little*, *The Miss Firecracker Contest*, and *Ghosts*.

Kelli Denby (Assistant Director) is a junior Theatre major from Port Arthur. Kelli has directed in SFA's high school summer theatre workshop for the past two years. She has also been seen in *Theme and Variation*, *Levitaton*, and *Blithe Spirit*.

Toby Drake (Hair and Makeup Designer) is a senior Theatre major from Hardin. Toby's hair and makeup designs include *Falstaff*, *The Miss Firecracker Contest*, *Proposals*, *To Burn a Witch*, and *Twenty-Four Years*. Toby was also the hair and makeup designer as well as costume coordinator for *The Wizard of Oz* at Lamplite Community Theatre.

About the Artistic Staff (continued)

Meghan Adriel Dwyer (Assistant Director) is a junior Theatre major from Southlake. Meghan has directed in SFA's high school summer theatre workshop for two years. She has also been seen in several Downstage productions such as *Proposals*, *Another Antigone*, *Blithe Spirit*, *Halftime at Halcyon Days*, and *To Burn a Witch*.

Juanita Finkenberg (Choreographer) earned her MA from California State University in Los Angeles, where she also worked with several dance companies. She is a dancer and certified fight choreographer. Her credits at SFA include *Gypsy*, *Once Upon A Mattress*, *A View From the Bridge*, *Cabaret*, *Dancing at Lughnasa*, *Hamlet* and *Copper Camp*.

Stacey Flores (Stage Manager) is a senior Theatre major from Bulverde. Stacey has just returned from an internship with The Arizona Theatre Company where she was the assistant stage manager for *Fully Committed*. Stage management credits at SFA include *Terra Nova*, *Complete Works....*, *Moon over Buffalo*, *A View from the Bridge*, *Table Settings*, *The Foreigner*, and the Original Cast.

Amy Foster (Assistant Stage Manager) is a junior Theatre major from Houston. Amy dramaturged *Ghosts* and was assistant stage manager for *Hamlet* and *Rhinoceros* on the SFA Mainstage. Amy was also the hair and makeup designer for The Festival of New American Plays.

Jennifer R. Hunter (Assistant Costume Designer) is a senior Theatre major from Angleton. Jennifer designed costumes for *Medicine Show* and *The Lover* and co-designed *An East Texas Christmas Carol*. Jennifer also directed *The Loveliest Afternoon of the Year* in the Downstage.

Joyous Israel (Lighting Designer) is a senior Theatre major who has just returned from a lighting internship with The Arizona Theatre Company, where she worked on *My Fair Lady*, *Fully Committed*, and *Work Song*. Lighting design credits at SFA include *Talking With....*, *Visit to A Small Planet*, *Complete Works....*, *Medicine Show*, and *Children of a Lesser God*.

Kelly A. Kasper (Assistant Costume Designer) is a junior Theatre major from Houston. Last summer, Kelly was a stitcher/wardrobe crew member for the Texas Shakespeare Festival in Kilgore. Kelly also designed *Halftime At Halcyon Days*, and was an assistant for *Falstaff*.

Stephen Lias (Musical Director, Conductor) is a member of the Music faculty at SFA. He spent nine years as the Resident Composer and Musical Director for the Texas Shakespeare Festival. Dr. Lias has won four consecutive ASCAP Standard Awards and was selected as the 2002 Commissioned Composer for the Texas Music Teachers Association. He was Musical Director for the SFA production of *Cabaret*.

About the Artistic Staff (continued)

Dusti Meeks (Hair/Makeup Designer) is a sophomore Theatre major from Canadian. Dusti was a wig stylist for *Falstaff* and stage manager for *The "I" Word: Interns*. She was also the light board operator for *The Loveliest Afternoon of the Year*.

Luis Ramirez (Lighting Designer) is an Associate Professor of Theatre at SFA. He earned his MFA in scene design from Carnegie Mellon University. His professional free-lance credits include scenic and lighting designs for Stage One in Louisville, the Body Politic Theater in Chicago, and the Saltwork Theatre Company in Pittsburgh. Recent SFA lighting designs include *Rhinoceros*, *Cabaret*, and *Dancing at Lughnasa*.

Kate Sumrow (Assistant Stage Manager) is a sophomore Theatre major from Houston. Kate was the stage manager for *Veronica's Room* as well as the ASM for *The Festival of New American Plays*. Kate was also the wardrobe head for *Dancing At Lughnasa* and served on the run crew for *Hamlet* and *Rhinoceros*.

Zachary Allen Whitaker (Sound Designer) is a sophomore Theatre major from Austin. Zach recently designed sound for *Medicine Show*. He was the light board operator for *Hamlet* and the sound board operator for *Rhinoceros*.



The Production Staff

Technical Director Steve Shirey
Costume Shop Supervisor Barbara Blackwell
Dramaturg Kimberlee Martin *
Assistant Directors Kelli Denby *, Meghan Dwyer
Assistant Choreographers Jacquelyn Green, Theresa Pennell
Assistant Stage Managers Amy Foster, Kate Sumrow
Shift Coordinator Michelle Davison-Reed
Properties Mistress Sarah Sweeny
Sound Engineer Paul Reynolds
Assistant Costume Designers Jennifer R. Hunter,
Kelly Kasper *

The Production Staff (continued)

Master Electrician	Joshua Heerssen
Lightboard Operator	Peyton Harris
Followspot Operators	Timothy Estelle, Ben Greely, Michael Speck
Soundboard Operator	Paul Reynolds
Paint Crew	Michelle Davison-Reed, Amanda Johnson, Rit Manning, Marcella Nunez
Scenery Construction	Chason Dancer, Matt Lyle, Waymond Reed, Theatre 150 & 350
Properties Crew	Aaron Gage, Anna Gallagher, Jacqui Garick, Brie Montgomery
Special Effects	Josh Riley, Jenny Stoneking
Light Hang Crew	Efren Alturo, Krystle Bender, Camron Cooke *, Erica Drain, Matt Lyle *, Lane Mooney, Charles Smith, Tori Thompson, Sarah Wilke
Floor Run Crew	Russ Brimer, Stephanie Carlton, Jacob Cartwright, Ollie DuBose, Jeremy Newcomer, Jen Noble, Ruth Ramsey, Sally Shephard, Scott Strickland
Fly Rail Operators	Amy Su Cale, Sean Fitzpatrick, Ian Momii, Justin Sawyers
Wardrobe Master	Michelle Harrison
Assistant Wardrobe Master	Kimberly Howard *
Wig Stylist	Spring Streetman
Costume Construction	April Cooper, Kelli Denby * Joyous Israel *, Dusti Meeks, Miranda Nunez, Dahon Swiere, Theatre 150 and 350
Costume and Makeup Running Crew	Robert Bills, Marina Burton, Marie Charlson, Laura Churchill, Darrell Grant, Stephanie Middleton, Brie Montgomery, Becky Pollock, Whitney Smith-Nelson, Heaven Stephens, Dahon Swiere, Tori Thompson, Maxx Walla, Jeremy Walker
House Manager	Allan Waite
Ushers	SFA Theatre Majors and Minors
Programs	Rick Jones, J.R. Ramirez *
Box Office Supervisor	Bobbie Ann Anderson

* Denotes membership in the Beta Phi cast of the
Alpha Psi Omega National Honorary Dramatics Fraternity

Special thanks to Jennifer Burcham, Amy Foster, Jessica Mills,
and Seaside Music Theatre Costume Division

SFA
Department of Theatre
Faculty and Staff

Dr. Richard Berry
Dean, College of Fine Arts

Dr. Clarence W. Bahs
*Professor and
Department Chair*

Ms. Angela Bacarisse
Assistant Professor

Dr. Richard Jones
Assistant Professor

Mr. Tomy Matthys
Associate Professor

Dr. Alan Nielsen
Professor

Mr. Allen Oster
Professor

Mr. Luis Ramirez
Associate Professor

Ms. Kim Wagner
Assistant Professor

Mr. Jack Heifner
Playwright-in-Residence

Ms. Juanita Finkenberg
Adjunct Faculty

Ms. Shari Watterston
Lecturer

Ms. Barbara Blackwell
Costume Shop Supervisor

Mr. Steve Shirey
Scene Shop Supervisor

Ms. Nelda Hartley
Administrative Assistant

Friends of the Arts
Theatre Division
Theatre Board

Linda Bond (Pres.)
Susan Conley (VP)
Al & Cynthia Bem (Secy./Treas.)
Debra Daughtery (Council Rep.)
Marti Byrd,
Melissa Cunningham,
Cindy Hughes, Melanie King,
Michael Langford,
Nancy Lemberger,
Anne & David Norton,
Frances Spruiell,
Katherine Whitbeck

Stokes Scholars
2002-03

Kelli Denby, Lyndsey Doolen,
Timothy Estelle, Kim Geiter,
Joshua Heerssen, Kristi Jones,
Kelly Kasper, Joe Morris,
Erin Orr, Angela Parsons,
Dahon Swiere,
Nathan Williamson,
Jason Wilson

Alumni Scholars

Stacie Barra, Stephanie Capasso,
Joshua Hahn, Joyous Israel,
Matthew Lyle

Departmental and
Other Scholarships

Veronica Blanco, Justin Cole,
Jacquelyn Garick,
Joshua Heerssen
Sarah Hooper, Chris Kennedy,
Natalie Melcher,
Stefanie Middleton,
Briann Montgomery,
Sarah Necker, Marcella Nunez,
Ruth Ramsey, Guy Vizard,
Jeremy Walker, Maxx Walla,
Jacob Wallace,
Stephen Witkowicz



**2002-03 Mainstage Season
Faculty-Directed Productions**

Ghosts

by Henrik Ibsen

October 1-5

Follies

by Stephen Sondheim & James Goldman

November 12-16

Bacchae

by Euripides

February 25 - March 1

The Seagull

by Anton Chekhov

April 22-26

**Fall 2002 Downstage Season
Student-Directed Productions
7:30 p.m. Friday; 2:00 and 7:30 p.m. Saturday**

A Dead Man's Apartment

by Edward Allan Baker

September 20-21

Medicine Show

by Hoffman Hays

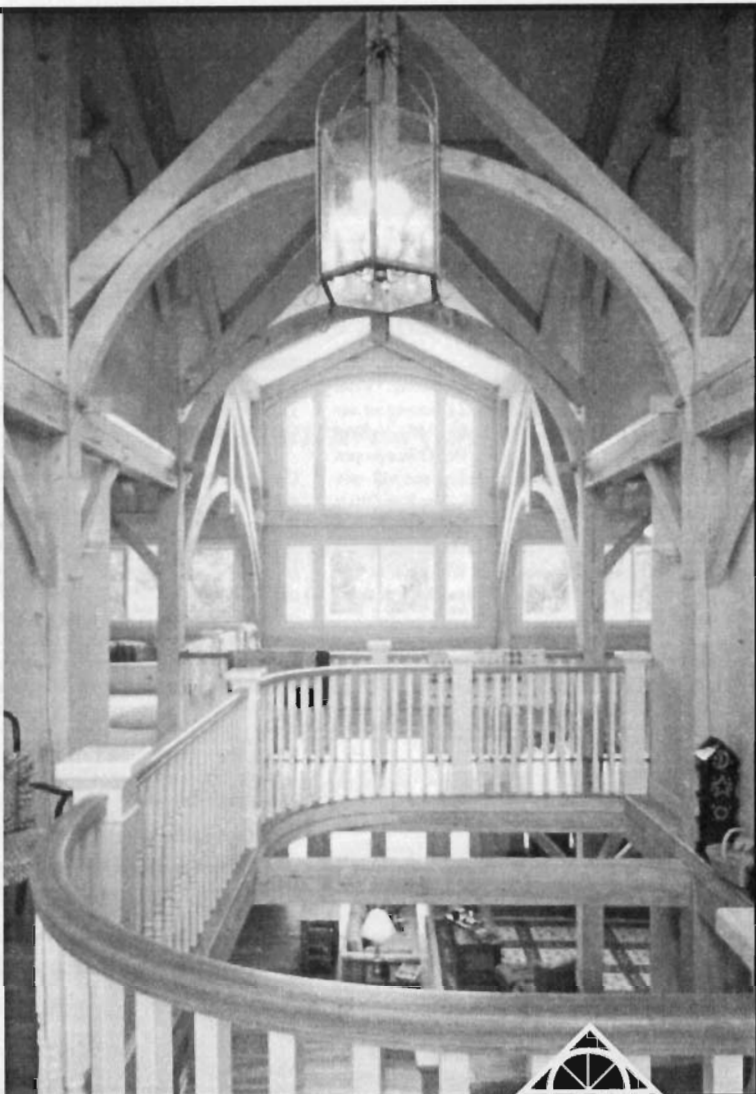
October 11-12

Thanks

by Ken Dashow

November 1-2

The World is Our Canvas.



Designing and crafting some of the most beautiful homes in America, right here in your home town.

**RED SUSPENDERS
TIMBER FRAMES**
NACOGDOCHES, TEXAS
(936) 564-9465

www.redsuspenderstf.com



*Proud supporters of the
SFA College of Fine Arts.*

UNIVERSITY SERIES

Dean, College of Fine Arts	Richard Berry
Programming and Development	Max Morley
SFA Gallery	Eloise Adams
Marketing and Promotions	Sylvia Bierschenk
Box Office and Audience Services	Bobbie Ann Anderson
Facilities Manager	Steven Shirey
House Manager	Kelly Denby
Ushers	Phi Mu Alpha Sinfonia

FOR YOUR INFORMATION

Tickets

Charge tickets conveniently by phone. Visa, Mastercard, American Express and Discover are accepted. Normal box office hours are weekdays 8 am to 5 pm. On performance dates, the Box Office is open 8 am to performance time on weekdays and will open at 6 pm for Saturday performances. The Box Office is located in Room 211 in the Griffith Fine Arts Building. Programs on the University Series are not recommended for children under five years of age. Each member of the audience must have a ticket regardless of age.

Late seating

In fairness to those already seated, patrons who have the misfortune to arrive late will be seated at an appropriate break in the performance.

Parking

Parking in front of the Griffith Fine Arts Building is available to those patrons who join the FRIENDS OF THE ARTS UNIVERSITY SERIES at the SUPPORTER Level. Parking in other campus areas is available. We recommend the southwest corner of East College and Raguet Streets. Please allow ample time for your arrival.

Persons with disabilities

Persons with disabilities are requested to reserve seats as soon as possible to request special assistance or accommodations needed for participation in events. Parking is provided in front of the Griffith Fine Arts Building on Alumni Drive. The elevator is located in the East Tower (campus side). Locations for wheelchair seating are available on the first floor of the W. M. Turner Auditorium. Program booklets in large type are available for visually impaired persons. Please call the Box Office at least two days in advance of the event and a copy will be held for you.

Rest Rooms

Rest rooms and drinking fountains are located in the lobby adjacent to the auditorium on the first level and in the hallway outside the balcony.

Telephone

A public telephone is located in the East Tower, Level Two, next to the elevator.

Food, beverages and smoking

Please do not take food or drinks into the auditorium. The use of tobacco products is not permitted in the Griffith Fine Arts Building.

Cameras, paging devices, cell phones and other electronic devices

Please deactivate all electronic devices before entering the auditorium. Patrons may also check them with our ushers prior to entering the auditorium so they may be guarded by the House Manager. Patrons who expect to be on call while attending a performance are requested to leave their names and seat locations with the House Manager. You will be contacted immediately and discreetly when called. Cameras and recording devices are not permitted in the auditorium.

When ticket holders can't attend

In the event you are unable to attend an event, please do one of the following:

1. Give your ticket to a friend; or
2. Give us a call at 468-6407, and tell us the name of the person who will use your seat. A substitute ticket will be reserved for your guest at the ticket window on the evening of the event; or
3. Call us and donate your ticket to an SFA student.

We regret there can be no refunds for University Series tickets.

Mailing lists

To receive information about future attractions in the College of Fine Arts, please complete a mailing list card available at the Box Office or call the Office of Arts Information.

Lost and found

Patrons who lose articles while attending an event may make inquiries with the House Manager or call the Box Office during regular office hours.

To contact us, call:

Dean, College of Fine Arts	468-2801
Box Office and Arts Information	468-6407
or toll free	1-888-240-ARTS
Programming and Development	468-1237

Saluting the Performing and Visual Arts at SFA

- *Free checking*
- *Full service Saturday banking*
- *Home and auto loans*
- *On-line banking*
- *MasterMoney check card*
- *Trust & Investment services*



Big enough to serve. Small enough to care.

1009 N. University Drive • www.fbtet.com



Cleveland • Diboll • Hemphill • Jasper • Kirbyville
Lufkin • Nacogdoches • Pineland • San Augustine • Splendor



SWS SECURITIES

(Formerly Southwest Securities, Inc.)

INVESTMENT BANKERS
RETIREMENT ACCOUNTS
STOCK BROKER/DEALER
Stocks, Bonds & Municipal Bonds
Member New York Stock Exchange, Inc.
S.I.P.C

David Wallace, Vice President/Mgr.
Richard Saldana, Reg. Rep.
Claudette Pearson, Reg. Rep.
Nacogdoches Plaza Suite 106
507 East Hospital
564-0425 or (800) 777-6973

Robin & John Moore
Proprietors



1323 N. University
Nacogdoches

Andi Rigby
Manager

564-1238
888-357-9632

The
COTTAGE

Custom Framing • Bath • Gourmet Kitchen • Fine Gifts • Gourmet Foods & Coffees

We Proudly Support
The Performing and Visual Arts
at
Stephen F. Austin State University



R & K Distributors, Inc.



Your
**University
Center
Bookstore**

- Conveniently located in The University Center
- Alumni Merchandise, Lumberjack Apparel and MUCH more!



- FAJITAS
- SALADS
- BIG MOUTH BURGERS
- AWESOME BLOSSOM
- STEAKS
- BABY BACK RIBS
- COUNTRY FRIED STEAK
- DRINK SPECIALS

LIKE NO PLACE ELSE

M - Th 11 am - 10 pm • Fri & Sat 11am - 11 pm
1911 North Street, Across from the SFA Campus -- 559-5775

ROY BLAKE INSURANCE AGENCY, INC.

900 UNIVERSITY DRIVE, NACOGDOCHES
564-6485 FAX: 564-6485



M•O•U•N•D•S•T•R•E•E•T Bed and Breakfast

Perfect for:
Gift Stays
Family Reunions & Gatherings

408 North Mound Street
Nacogdoches
Phone: 569-2211

FLYNN

PAINT • CARPET • FLOORING
CUSTOM-FINISHED FURNITURE

Bill & Margaret Flynn
Owners



569-6884
Fax 569-2962



4536 N.E. Stallings Drive
Nacogdoches

*The SFA University Series is one of
Nacogdoches' extraordinary treasures
and worthy of our support!*

Lee Danis & Associates

COMMERCIAL REAL ESTATE SERVICES



A M B I A N C E

Fine Furnishings • Gifts • Interior Design

303 North Street, Nacogdoches

936.564.4906

www.ambianceinteriors.org

Open Monday thru Saturday, 10 a.m. to 5:30 p.m.

"Selling the Finest Furniture in East Texas"

COATS GALLERY

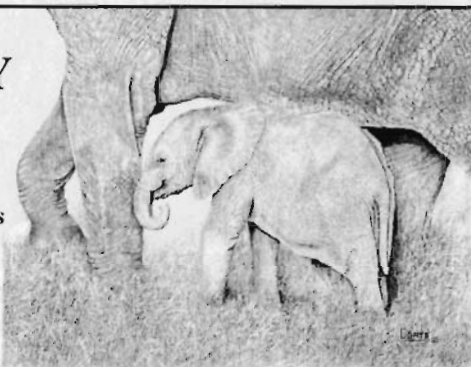
Harold Coats Artist

Archival Custom Framing Services

112 E. Main • Nacogdoches

560-5844

www.haroldcoats.com



Cuts • Color • Perms • Facials • Microdermabrasion • Massage Therapy
Computer Imaging • Tips • Sculpted Nails • Spa Manicures & Pedicures

*Julia's
Salon*

559-8722 • 118 N. Church St. • Downtown Nacogdoches

*Any great work of art
revives and readapts time and space,
and the measure of its success is the extent
to which it makes you an inhabitant of
that world...the extent to which it invites
you in and lets you breathe its
strange, special air.*

-Leonard Bernstein



GLAUCOMA CONSULTANTS OF EAST TEXAS



Shannon L. Smith, M.D., F.A.C.S.

*Diplomate, American Board of Ophthalmology
Fellowship Trained in Glaucoma*

3000-A N. University Drive Nacogdoches, TX
936-564-3600 or Toll Free 1-877-810-3937

IN TUNE WITH EAST TEXAS.



**Austin
Bank**

www.austinbank.com • Member FDIC
3205 N. University • Nacogdoches • (936) 559-5500



**The
Fredonia**

Hotel and Convention Center

(936) 564-1234

Email: reservations@fredoniahotel.com

See us at: www.fredoniahotel.com

200 North Fredonia Street • Nacogdoches, Texas 75961

This could be your ad space.

It will run all season through 20 events.
Connect your business with the Arts in East Texas.
Enjoy a valuable return on your investment.

Call 936-468-1237.



NACOGDOCHES EYE ASSOCIATES

Eyecare for those who know the difference

3208 N. University Drive, Suites B & C,
Nacogdoches

ASHLEY RISNER, O.D.

Board Certified in Ocular

Therapeutics and Glaucoma

564-7661 or 564-EYES

MARK LANIER, O.D.

Board Certified in Ocular

Therapeutics and Glaucoma

AXLEY & RODE LLP


CERTIFIED PUBLIC ACCOUNTANTS

420 NORTH STREET
NACOGDOCHES, TEXAS 75961
569-9518
FAX 569-6073

• International Tours & Cruises • International Tours & Cruises •

TWENTY-TWO YEARS OF

1981  2003

TRAVEL  **Excellence**

• International Tours & Cruises • International Tours & Cruises •

International Tours & Cruises • International Tours & Cruises •



WHEN YOU
NEED THE
PERFECT PITCH

A FULL SERVICE
ADVERTISING AGENCY

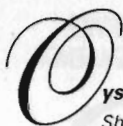
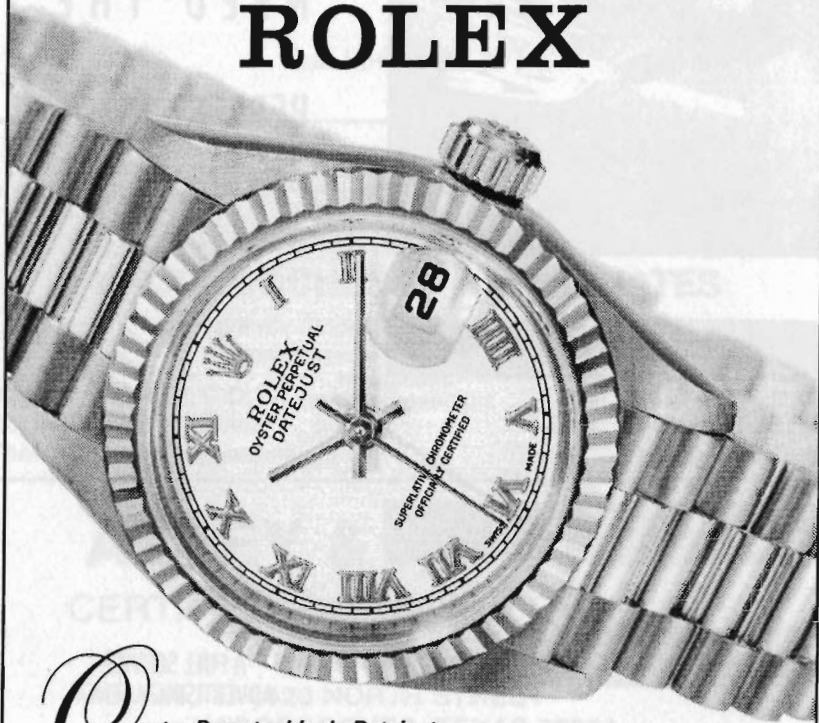


POINT A MEDIA
INCORPORATED

www.pointamedia.com



ROLEX




Oyster Perpetual Lady-Datejust

Shown with fluted bezel and President bracelet.
Pressure-proof to 330 feet. Available in 18kt yellow
or white gold.

Kennedy's

JEWELERS

201 East Main
Nacogdoches, TX 75961
(936) 564-7671 Fax (936) 564-2650

Rolex, , Oyster Perpetual and Lady-Datejust are trademarks.