

THE UNIVERSITY SERIES
2004-2005 SEASON OF CLASSIC INSPIRATION

Stephen F. Austin State University College of Fine Arts
and Department of Theatre present

HARVEY

BY MARY CHASE

FEBRUARY 22-26, 2005

7:30 P.M.

W. M. TURNER AUDITORIUM

Sponsored in part by

TIPTON
FORD-LINCOLN-MERCURY

Art Inspires.



Art Performs.

Art Burns Rubber.



Proud Supporter of the
SFA University Series

TIPTON
FORD-LINCOLN-MERCURY

1115 North Street in Nacogdoches
www.tiptonford.com

The University Series

2004 - 2005 Season of Classic Inspiration

The Art Center and Griffith Gallery are open Tuesday through Sunday, 12:30-5 pm

All performances at 7:30 pm

October 7 - 9 *Hair: The American Tribal Love-Rock Musical*
W. M. Turner Auditorium

October 17 *A French Connection with the Orchestra of the Pines*
W. M. Turner Auditorium

Oct. 20 - Dec. 12 *Rico Lebrun: Consulting the Tangible World*
Griffith Gallery

October 28 *I Musici de Montréal with pianist Anton Kuerti*
W. M. Turner Auditorium

December 6 *A Christmas Carol, the Musical*
Performed by Troup America, W. M. Turner Auditorium

January 22 - March 24 *Painting in the Gestural Tradition*
The Art Center

February 4 *Cinderella*
Performed by the Minnesota Ballet, W. M. Turner Auditorium

February 5 - March 24 *Refined IV: Innovation*
Griffith Gallery

February 22 - 26 *Harvey*
SFA Theatre Production, W. M. Turner Auditorium

March 4 *Chanticleer*
W. M. Turner Auditorium

March 31 - April 2 *Die Fledermaus*
W. M. Turner Auditorium

April 4 *Two Gentlemen of Verona*
Performed by the Acting Company, W. M. Turner Auditorium

April 5 - May 15 *James Surls: Recent Works*
Griffith Gallery

For information, call (936)468-6407 or 1-888-240-ARTS



SFA ALUMNI FOUNDATION

Fine Arts Scholarships

Representing nearly \$645,000
that annually benefit students
in the College of Fine Arts

Kermit & Margaret Agee Scholarship

Elsie Arscott Scholarship

Bridges/McKinney Scholarship

Perry & Martha Brittain Scholarship

Zack Brittain Scholarship

Paul Buskirk Memorial Scholarship

Zelma Childers Award

Wanda Cochran Scholarship

Ed & Gwen Cole Theatre Scholarship

J.T. Cox Scholarship

Melba Cranford Scholarship

John & Doris Daniel Scholarship

John Dickson Scholarship

E. Diane Ford Scholarship

Diane, Casey, and Court Fouts Scholarship

H.H. & Bertha Gibson Scholarship

W.H. & Bennie Atkinson Gray Scholarship

Emily Hargraves Scholarship

Charles Lee Hill Scholarship

Doris & James Jones Scholarship

James G. & Doris Jones Scholarship

Brian LaBarbera Memorial Scholarship

Lenville Martin Award

Pat Roberdeau Mast Scholarship

Brad Maule Award

Sandy McGrath Scholarship

Mamie Middlebrook Scholarship

Mel Montgomery Scholarship

Ida Pritchett Scholarship

Mary Osborne Ray Scholarship

Karl Schlicher Award

Barbara Schoenewolf Scholarship

SFA Theatre Scholarship

Simpson/Miller Scholarship

Aaron Smith Scholarship

Snyder Family Scholarship

William M. Turner Scholarship

Jimmie Hudgins Twirl-o-Jack Scholarship

Stephen Weeks Scholarship

Anonymous Scholarship



SFA Alumni Association

PO Box 6096-SFA Station • Nacogdoches, TX 75962

Toll Free: (800) 765-1534 • Ph: (936) 468-3407 • Fax: (936) 468-1007

alumni@sfasu.edu • www.sfaalumni.com

Like Diamonds, Endowments are Forever.

The SFASU Foundation manages more than \$8 million in permanent endowments that support SFA, its students and programs.

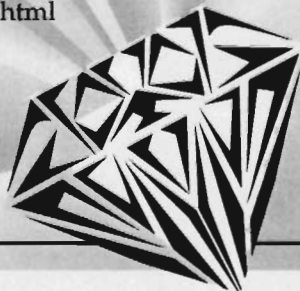
Many of these endowments support the College of Fine Arts at SFA. If you would like to make a difference during your lifetime and beyond, establish an endowment today.

For more information and details regarding endowments, please contact Jerry Holbert, Executive Director.

STEPHEN F. AUSTIN STATE UNIVERSITY FOUNDATION, INC.

P.O. Box 6092, SFA Station
Nacogdoches, Texas 75962
(936) 468-5406

www.givetosfa.sfasu.edu/create.html



*"You can't depend
on your eyes when your imagination
is out of focus."*

-Mark Twain



GLAUCOMA CONSULTANTS OF EAST TEXAS



Shannon L. Smith, M.D., F.A.C.S.

*Diplomate, American Board of Ophthalmology
Fellowship Trained in Glaucoma*

3000-A N. University Drive Nacogdoches, TX
936-564-3600 or Toll Free 1-877-810-3937



Art Performs.

Dear Friends of the Arts,

I would like to welcome you to another fine performance at the Stephen F. Austin State University College of Fine Arts.

Tipton Ford-Lincoln-Mercury is very proud to play a part in bringing the best the fine arts has to offer right here to our hometown. So sit back, relax and enjoy the show.

Sincerely,

Neal Slaten
President

TIPTON
FORD-LINCOLN-MERCURY

1115 North Street in Nacogdoches
www.tiptonford.com





**OFFICE
SOLUTIONS**

Computer Networks

Digital Copiers

Intergrated Fax

Supplies

Phone: 560-6500

**SIMPLE PEACE
OF MIND.**

JMG/iC

**JOE MAX GREEN
INSURANCE CONCEPTS**

564-0221

3310 N. UNIVERSITY

**XEROGRAPHIX
EAST TEXAS**

PROMPT LOCAL SERVICE

Xerox products to meet every need and every budget

- Color Copiers
- Digital Solutions
- Fax Machines
- Laser Printers



204 E. Pilar Street • Nacogdoches, TX • 936-569-1992

If you are a beginner or a seasoned weight lifter, ULTRAFIT can accommodate your needs

FRIENDLY ATMOSPHERE

ULTRAFIT PREVENTIVE MEDICINE CENTER



1326 North University
462-8348

M-F: 5am to 9pm SAT: 8am to 5pm



REASONABLE RATES

UNLIMITED ACCESS • KNOWLEDGEABLE STAFF • CLEAN ENVIRONMENT

RAY JOHNSTON, L.C.S.W. Counseling Services

- Individual, Family, Marital & Divorce; Children, Adolescents
- Depression, Stress/Work/School and Relationship Issues
- Alcohol and Drug Problems
- Most insurance accepted including Medicare, Medicaid, BCBS, CHAMPUS/Tricare
- Negotiable Rates
- Close to SFA Campus

24 hours - 569-8570
fax: 560-1144

Our reputation speaks for itself.

TENTS • WEDDINGS • PARTIES • TOOLS

UNIVERSITY RENTAL

Try our chocolate fountain!

560-0800

JIM ELDER, OWNER

732 N. UNIVERSITY



CAR WASH • EXPRESS DETAIL

VALVOLINE EXPRESS CARE
1620 SOUTH STREET
NACOGDOCHES
560-3457

EXCEL CAR WASH &
VALVOLINE EXPRESS CARE
4101 NORTH STREET
NACOGDOCHES
560-1453

VALVOLINE EXPRESS CARE
2601 NORTH STREET
NACOGDOCHES
552-7279

SFA College of Fine Arts and University Series present

CHANTICLEER

AN ORCHESTRA OF VOICES

Friday, March 4, 7:30 P.M.
W. M. Turner Auditorium



Sponsored in part by



ICM Artists, Ltd. Managers

and the SFA Department of Music's production of

DIE FLEDERMAUS

by Johann Strauss, Jr.

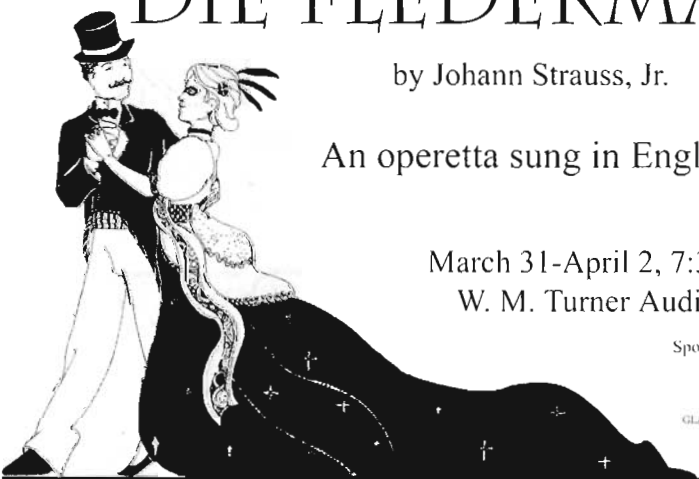
An operetta sung in English

March 31-April 2, 7:30 p.m.
W. M. Turner Auditorium

Sponsored in part by



GLAUCOMA CONSULTANTS
OF EAST TEXAS



CFA
SFA

To purchase tickets or for more information, visit
www.finearts.sfasu.edu or call (936) 468-6407 or (888) 240-ARTS

STYLING: K. H. PHOTOGRAPHY: J. H.

*Creating a masterpiece . . .
one portfolio at a time.*



Edward Jones

INVESTMENTS



Steven W. Barber
CFP®, AAMS



Gary L. Russell

777 East Austin • (936) 560-2702

Member New York Stock Exchange, Inc. and Securities Investor Protection Corporation.
Serving individual investors from more than 9,000 offices nationwide, Canada and The UK.
Website: www.edwardjones.com

Your Community.
Your Paper.



The Daily Sentinel

For subscription or advertising
information call

564-8361

www.dailysentinel.com

SFA DEPARTMENT OF THEATRE
THE UNIVERSITY SERIES
and the
COLLEGE OF FINE ARTS
present

HARVEY

BY MARY CHASE

Directed by Alan Nielsen

Scenic Design by Tomy Matthys
Costume Design by Val Winkelman
Lighting Design by Steven H. Shirey
Makeup Design by
Veronica Blanco and Ruth Ramsey
Sound Design by Roni Lias
Stage Manager: Whitney L. Smith-Nelson
Assistant Directors:
Jeremy Barrow and Victoria Thompson
Dramaturg: Ruth Ramsey

FEBRUARY 22-26, 2005

7:30 P.M.

W. M. TURNER AUDITORIUM

About the Cast

Ryan W. Angell (Wilson) transferred to SFA from Trinity Valley Community College, where he appeared in such productions as *Pvt. Wars*, *The Lion in Winter*, and *The Scandalous Adventures of Sir Toby Trollope*.

Justin Foster Cole (Dr. Sanderson), a junior BFA performance major from Nacogdoches, has acted in *Hair*, *Lucky, You're a Good Man*, *Charlie Brown*, and with the Original Cast. His scene designs include *The Waste Disposal Unit* and the upcoming *Three Days of Rain*.

Anna Forbes (Veta), an American Theatre Arts student from Exeter, UK, was seen last semester in SFA's *Six Characters in Search of an Author*. Anna has received two gold medals from The London Academy of Music and Dramatic Arts.

Micah Goodding (Elwood) is a transfer student from Kilgore College. At SFA his credits include *Hair*, *The Waste Disposal Unit*, and *Self Torture and Strenuous Exercise*. Micah has acted with the Texas Shakespeare Festival and is a certified master puppeteer.

Joshua Hemingway (Judge Gaffney), an ATA student from Huddersfield, UK, appeared last semester in *Six Characters in Search of an Author*. At Rose Bruford College, his credits include *Reunion*, *The Crucible*, and *All Powers Necessary and Convenient*.

Chris Kennedy (Dr. Chumley), a junior BFA performance major from San Antonio, has appeared in such SFA productions as *Sideways Stories from Wayside School*, *Women in Flames*, *The Man Who Came to Dinner*, and *The Seagull*. Chris is also in the Original Cast.

Natalie Frances Melcher (Miss Tewksbury/Miss Johnson) has acted in several SFA productions, including *Hair*, *A Fallen Man*, *The Gulf*, *Lilly's Purple Plastic Purse*, *Bacchae*, and *Follies*. Natalie, a junior from Houston, is also a second-year member of the Original Cast.

Boni Newberry (Mrs. Chauvenet) is a sophomore theatre major from Keller. At SFA, her previous acting credits include *Hair*, *The Man Who Came to Dinner*, *Self Torture and Strenuous Exercise*, and *What We Do With It*.

Erin Elizabeth Orr (Mrs. Chumley) is making her final appearance on SFA's Mainstage, as she will be going on an acting internship in the fall. Erin, a senior from Henderson, has appeared in such SFA productions as *Hair*, *The Man Who Came to Dinner*, *The Land of the Dragon*, *Bacchae*, *Copper Camp*, and *The Medicine Show*.

About the Cast (continued)

Savannah Seilheimer (Nurse Kelly) is a freshman from Garland High School, where she was seen in *The Crucible*, *And They Dance Real Slow in Jackson*, and *The Insanity of Mary Girard*. Savannah is making her *début* on SFA's Mainstage.

Cara Smith (Myrtle Mae), an ATA student from Suffolk, England, has appeared at SFA in *The Role of Della* and in the Original Cast. In the UK, she has worked in both ballet and theatre, including performances at the Edinburgh Fringe Festival and at Rose Bruford.

James Patrick Wetuski (E. J. Lofgren) has been in such SFA productions as *Lucky*, *The Increased Difficulty of Concentration*, *A Winnie the Pooh Birthday Tale*, *Copper Camp*, and *Hamlet*. He will appear in SFA's student film production, *American Goldfish*.

About the Artistic Staff

Russ Arnett (Assistant Stage Manager) is a freshman theatre major from San Antonio. At SFA, Russ has served as Fly Rail Operator for *Six Characters in Search of an Author*, and as the Soundboard Operator for *Hair* and *Quake*.

Jeremy Barrow (Assistant Director), a senior theatre major from High Island, appeared in the SFA productions of *Les Liaisons Dangereuses* and *Romeo and Juliet*. His acting credits at Lamar University include roles in *Buried Child*, *A Midsummer Night's Dream*, and *Tartuffe*.

Justin Urias Bauer (Assistant Stage Manager), a sophomore from Austin, has appeared in such SFA productions as *Six Characters in Search of an Author*, *The Vise*, *The Fifth Sun*, and *The Devil's Karma*. This semester, Jub will be assistant directing *Shooting Simone*.

Barbara Blackwell (Costume Shop Supervisor) became Costume Shop Supervisor in 2000. She was Costume Illustrator for *The Land of the Dragon*, and has worked on many other shows: most recently, *Six Characters in Search of an Author*, *Hair*, *Sideways Stories from Wayside School*, *The Two Maples*, and the 2004 New Plays Festival.

Veronica Blanco (Hair and Makeup Designer) has appeared in *Hair*, *Lucky*, *The Increased Difficulty of Concentration*, and *Bacchae*. Next year, Veronica will be leaving for an internship in London and Barcelona. She is also on the President's List.

About the Artistic Staff (continued)

Sonia Elizabeth Lerner (Assistant Costume Designer) is a junior theatre major from Houston. At SFA, she has appeared in *Hair*, the Original Cast, and *The Nutcracker Remix*. She was the Lighting Designer for *Self Torture and Strenuous Exercise* and is an art minor.

Roni Lias (Sound Designer) designed sound for *Macbeth*, *A Midsummer Night's Dream*, and *Henry V*, among others, in six years with the Texas Shakespeare Festival. She is also webmaster for SFA's College of Fine Arts and for the Music and Theatre Departments.

Tomy Matthys (Scenic Designer) has taught for over 30 years at SFA, where he has designed over 200 productions. His most recent scenic designs include *Six Characters in Search of an Author*, *Hair*, *Sideways Stories from Wayside School*, *The Two Maples*, *The Increased Difficulty of Concentration*, *Bacchae* and *Follies*.

Alan Nielsen (Director), a Professor of Theatre at SFA, also directs and writes for the Original Cast. He is a published author, playwright, and composer/lyricist. He received the Teaching Excellence Award for the Fine Arts in 1999 and 2003. Recent SFA directing credits include *Pericles*, *You're a Good Man, Charlie Brown*, and *Follies*.

Ruth Ramsey (Dramaturg & Makeup Designer) was Dramaturg for *Six Characters in Search of an Author* and Hair/Makeup Designer for *Self Torture and Strenuous Exercise*. Her Mainstage acting credits include *The Increased Difficulty of Concentration* and *Bacchae*.

Steven H. Shirey (Lighting Designer/Technical Director) earned a BFA from SFA and an MFA in Lighting Design from USC. He has been Technical Director at SFA since 2001. His lighting design credits at SFA include *Six Characters in Search of an Author*, *Hair*, and the operas *Street Scene*, *The Consul*, and *The Magic Flute*.

Whitney L. Smith-Nelson (Stage Manager) assistant directed *Six Characters in Search of an Author*, stage managed *The Man Who Came to Dinner*, directed *The Vise*, and was Company Manager for Summer Rep '04. This semester she will direct *Shooting Simone*.

Victoria Thompson (Assistant Director) has performed in *Hair*, *Pericles*, *The Land of the Dragon*, and *Bacchae*. She directed *The Man Who Couldn't Dance* and designed makeup for *The Vise* and *Quake*. Tori can be seen next in *The Member of the Wedding*.

Val Winkelman (Costume Designer) is Associate Professor of Theatre at Auburn University Montgomery in Alabama. She has designed costumes for the Texas Shakespeare Festival in Kilgore for 16 years; in all her credits total over 70 productions in five states.

Dramaturg's Note

Mary Chase actualized Harvey in 1944 during the heated years of World War II in an attempt to cheer up a dear friend who had recently lost her son in the war. Elements of Chase's Irish heritage can be seen throughout the play. The title character is an invisible "pooka"--a mischievous creature from Irish folklore that would appear at unexpected moments to people of its choice. Chase had heard stories of creatures like the pooka from her Irish relatives as a child. Some early Irish pookas were believed to wreak havoc on crops and cattle. However, over the past few centuries, the idea of the pooka has become much gentler. Pookas are often found next to fence posts and enjoy having long conversations with initially troubled individuals and rumpots. During these conversations, the pooka usually imparts interesting, fantastic stories that may or may not get the listener into trouble.

Perhaps part of the reason Harvey is such good friends with Elwood, the leading character of the show, is that Elwood is by no means perfect. He no longer needs a career, but instead spends most of his time frequenting local bars and playing pinochle with society's outcasts. However, there is something about Elwood's sincere, accepting, nature and his optimistic outlook that makes him a man everyone wishes to be a little more like. After meeting Harvey, Elwood now believes it is more important to be pleasant than so-called "smart." Like many people, after a series of tragedies, he needed a friend to help him realize the joy that was still left in life--he needed Harvey.

And in times like these, with the war going on and the economy down, who doesn't need a special friend to help us realize the reasons we go on? Maybe we all could use a great, big, invisible rabbit of our own to remind us what really matters in life--acceptance, compassion, love, and most importantly...being pleasant.

--Ruth Ramsey

The Cast

(In order of appearance)

| | |
|----------------------------------|---------------------------|
| Myrtle Mae Simmons | Cara Smith |
| Veta Louise Simmons | Anna Forbes |
| Elwood P. Dowd | Micah Goodding |
| Miss Johnson/Miss Tewksbury | Natalie Frances Melcher * |
| Mrs. Ethel Chauvenet | Boni Newberry * |
| Ruth Kelly, R.N. | Savannah Seilheimer |
| Duane Wilson | Ryan W. Angell |
| Lyman Sanderson, M.D. | Justin Foster Cole * |
| William R. Chumley, M.D. | Chris Kennedy * |
| Mrs. Betty Chumley | Erin Elizabeth Orr * |
| Judge Omar Gaffney | Joshua Hemingway |
| E.J. Lofgren | James Patrick Wetuski |

The Setting

The action of the play takes place in a small city in the Heartland, in the library of the old Dowd family mansion and the reception room of Chumley's Rest.

Act I:

Scene 1: The library, late afternoon.

Scene 2: Chumley's Rest, an hour later.

Intermission

Act II:

Scene 1: The library, an hour later.

Scene 2: Chumley's Rest, four hours later.

Act III:

Chumley's Rest, a few minutes later.

* Designates a member of the Beta Phi cast of Alpha Psi Omega, the national honorary dramatics fraternity.

Director's Note

It is recorded that Mary Chase, a former newspaper writer, wrote her fantasy-comedy *Harvey* in 1944 in an effort to cheer up an acquaintance who had lost a loved one in World War II. But most wartime plays and movies in America celebrated cohesiveness and conformity—everyone coming together, with one mind, to do their bit for the cause. How remarkable, then, that in the midst of such a national effort to stamp out individualism, Mrs. Chase chose to cheer us up with a gentle farce about a tipsy nonconformist.

Not only is Elwood “different,” but somehow we wind up rooting for his right to *be* different. “In this world,” Elwood tells us, “you must be oh so smart or oh so pleasant. For years I was smart. I recommend pleasant.” Sixty years later, the desire to follow Elwood and break away from the “normal” world of black-and-white absolutes and empty routine still has its charms. We grow tired of trying to be “smart.” And so we still happily root for Elwood to be waiting for us at Charlie’s Place, as always. With *Harvey* by his side.

About the Playwright

Mary Coyle Chase (1907-81) was born in Denver, Colorado, and had a long career as a writer for the *Rocky Mountain News* before turning to playwriting in the 1930s. Her first two plays were undistinguished. But her third, *Harvey*, not only won a Pulitzer Prize but has become one of the most beloved and often revived of American comedies. Later plays include *Mrs. McThing* (1952), *Bernadine* (1952), and *Midgie Purvis* (1961, her last produced work).

Harvey opened on Broadway in 1944 and ran for 1,775 performances. It was filmed in 1950.

The Technical Staff

| | |
|----------------------------------|--|
| Technical Director | Steven H. Shirey |
| Costume Shop Supervisor | Barbara Blackwell |
| Assistant Stage Managers | Russ Arnett, Justin Urias Bauer |
| Properties Mistress | Jacquelyn Green* |
| Assistant Costume Designer | Sonia Elizabeth Lerner* |
| Master Electrician | Paul Reynolds* |
| Lightboard Operator | David Nedde |
| Sound Technician | Zachary Whitaker |
| Soundboard Operator | Jeff Lochmann |
| Scenery Construction | Theatre 150 and 350 |
| Properties Crew | Lucy Davies, Jessee Foudray, Brandie Holliday, Brooke Lightfoot, Kate Marsden, Annika Rands, Justin Sawyers, Nicole Terna |
| Grips | Thomas Brazzle, Jessica Harkness, Alex Jeffrey, Amanda Jurek, Jesse Sellers |
| Fly Rail Operator | Jeremy Newcomer, Joshua Spence |
| Light Hang Crew | Lacey Carnley, Justin Elbert, Clint Hanna Jason Harris*, Amanda Jurek, Heather Light*, Maria Michaels, Amber Talley* |
| Wardrobe Master | Kristi Agee |
| Costume Construction | Theatre 150 and 350 |
| Wardrobe Crew | Sy Gunter, Stephanie Rhoades, Randi Rose |
| Hair & Makeup Crew | Jean McCarthy, Nadaha McCullough |
| House Manager | Josh Real |
| Ushers | Theatre majors and minors |
| Programs | Rick Jones, Melissa Recalde* |
| Box Office Supervisor | Diane Flynn |
| Publicity | Sylvia Bierschenk, Office of Arts Information |

Acknowledgments

Lianna Bittick at AJL Advertising Specialties (Austin),
Mr. G's Fashion, Dr. Ronald Petti.

**Harvey is produced by special arrangement
with Dramatists Play Service, Inc.**

**SFA Department of
Theatre
Faculty and Staff**

Dr. Richard Berry
Dean, College of Fine Arts

Dr. Clarence W. Bahs
*Professor and
Department Chair*

Ms. Angela Bacarisse
Assistant Professor

Dr. Richard Jones
Assistant Professor

Mr. Tomy Matthys
Associate Professor

Dr. Alan Nielsen
Professor

Mr. Allen Oster
Professor

Mr. Luis Ramirez
Associate Professor

Mr. Jack Heifner
Playwright-in-Residence

Ms. Shari Watterston
Ellsworth
Lecturer

Ms. Juanita Finkenberg
Adjunct Faculty

Ms. Barbara Blackwell
Costume Shop Supervisor

Mr. Steve Shirey
Scene Shop Supervisor

Ms. Nelda Hartley
Administrative Assistant

**Friends of the Arts
Theatre Division
Theatre Board**

Susan Conley (Pres.)
Betty Ann Taylor (VP)
Melissa McMillian-Cunningham
(Secy./Treas.)
Debra Daughtery (Council Rep)
Stephanie George,
Nancy Lemberger,
Kathleen McBride, Bo Miller,
David & Anne Norton,
Frances Spruiell, Bill Taylor,
Jessica Williams

**Stokes Scholars
2004-05**

Veronica Blanco, Kelli Bland,
Lyndsey Doolen, Timothy Estelle,
Chad Kinsman, Shawna Lynch,
Natalie Melcher, Missy Paschke,
Melissa Recalde,
Whitney Smith-Nelson,
Heaven Stephens,
Tori Thompson

Alumni Scholars

Thomas Brazzle, Marie Charlson,
Justin Cole, Timothy Estelle,
Erin Orr

**Departmental and
Other Scholarships**

Cara Boden, Sara Boland-Taylor,
Kera Dacy, Jessee Foudray,
Chris Gamel,
Micah Goodding, Clint Hanna,
Nadaha McCullough,
Bettina Palomino, Cassidy Risien,
Jesse Sellers, Nicole Terna



2004-05 Mainstage Season
Faculty-Directed Productions
All performances at 7:30 p.m.

Hair

October 7-9

Book & Lyrics by Gerome Ragni & James Rado;
Music by Galt McDermot

Six Characters in Search of an Author

by Luigi Pirandello

November 16-20

Harvey

by Mary Chase

February 22-26

The Member of the Wedding

by Carson McCullers

April 26-30

Spring 2005 Downstage Season
Student-Directed Productions

7:30 p.m. Friday; 2:00 and 7:30 p.m. Saturday

The Whole Shebang

by Rich Orloff

February 11 & 12

Three Days of Rain

by Richard Greenberg

March 4 & 5

Shooting Simone

by Lynne Kaufman

April 1 & 2

The Yellow Boat

by David Saar

April 15 & 16

Friends of the Arts, Art, Music and Theatre

Membership Period: January 1 through December 31, 2004

Current to February 10, 2005

Diamond

Ann Bradshaw Stokes Foundation
Mr. and Mrs. Edward Cole
Nacogdoches Memorial Hospital
Mr. and Mrs. Steve W. Shepherd

Gold

Mr. and Mrs. Ron Adkinson
Elaine Burgess Ashcroft
Dr. Jill Carrington
Nacogdoches Junior Forum
Presser Foundation

Silver

Richard and Debbie Berry
Dr. and Mrs. Neal Houston
Dr. David Lewis
Ms. Sarah M. Mills
Nine Flags Festival, Inc.
Tipton Ford-Lincoln-Mercury, Inc.
Tom and Peggy Wright

Bronze

Dee and James Allums
Dr. and Mrs. Roger L. Campbell
Pat Dolan & Linda Mock
Mrs. Lynn Fisher
Ms. Carolyn Goodenough
Mr. and Mrs. Alan P. Jones
Mr. and Mrs. John Lusk
Mrs. Charlotte B. Montgomery
Point A Media, Inc.
Dr. F. Barry Roberts
Hardy and Susan Thompson
Dr. Nancy Wisely

Sponsor

Mr. Fred J. Allen
Don and Pat Barnett
Dr. and Mrs. Arthur Benoy
Mr. Robert V. Browne
Mr. James N. Chambers
Dr. and Mrs. Richard Conner
Mr. and Mrs. Lee Danis
Ms. Patricia Jayneane DeGrape
Dr. and Mrs. Bill Gandy
Karon Gillespie
Dr. John Goodall
Michael Mollot, M.D.
Max and Carolyn Morley
Holly Musick and Bob Coker
Mrs. Barbara Neff
Mr. James E. Seale
Doug and Joyce Swearingen
Mrs. Kimberly Stockseth
Mike White and Shannon Smith
Ms. Rhonda Williams
Steve and Lisa Young
Joe and Jeanne Zeman

Patron

David and Eloise Adams
Ron and Bobbie Ann Anderson
Mr. and Mrs. Barney Babb
Ms. Sharon Bailey
Dr. and Mrs. Flamen Ball
Mr. and Mrs. Al Ben
Mr. and Mrs. Joseph Patrick Bersalona
Mr. and Mrs. Joe Bierschenk
Ervin Carl Boehm
Ernest and Sheila Boyett
Jeff and Angie Brewer
Mr. and Mrs. Marc C. Bridgham
Mr. and Mrs. Gary L. Brittain

Roland and Claire Bunge
Mr. Brent C. Cannon
Ms. R. Yvette Clark
Commercial Bank of Texas
Mr. Thomas E. Dalton
Mr. and Mrs. Alfred Danheim
Daughters of the American Revolution
Mrs. Rochelle G. Davies-Stapleton
Lud and Charlotte Davis
Mr. Robin Dawley
Dr. and Mrs. John P. Decker
Mr. Donald H. Dildy
Mr. and Mrs. Skipper M. Drost
Mr. and Mrs. Tracy L. Estelle
Elizabeth Akamatsu and Piero Fenci
Dr. and Mrs. Ivan Filippo
Tod and Amy Fish
Mr. Gary Q. Fields
Barton and Masako Gaskin
Mrs. Pattye Greer
Jack and Suerita Guild
Ms. Laura L. Guthrie
Mrs. Judy Ann Haight
Mr. and Mrs. Archie Haney
Mr. Matt Havard
Mr. and Mrs. Guy Hicks
Highland Presbyterian Church
Mr. Charles R. Hogan
Mrs. Catherine M. Holley
Ms. Kay F. Humphreys
Dr. June Irwin
Mr. and Mrs. Scott Jacobs
Robert Kinsell and Judy Morgan-Kinsell
Mrs. Robert Kline
Dr. Forrest T. Kroschel
Mr. and Mrs. Robert John Kruger
Mr. and Mrs. Grady Kyle
M. H. Moorer Company
Mr. Matthew H. Manning
Mr. and Mrs. Gary Matocha
Diane McCameron
Drs. Tom and Sylvia McGrath
Mr. and Mrs. Terry McKissick
Mel and Virginia Montgomery
Dr. and Mrs. John T. Moore
Mrs. Sue Muckleroy
Mr. Don C. Mulkey
Cmdr. Linn A. Mullin
Nacogdoches Art League
Nacogdoches Noon Lions Club
Nacogdoches Rotary Club
Dr. and Mrs. John R. Pack
Gary Parker and Carolyn Spears
Ms. Gretchen Patterson
Ms. Mary M. Pettit
Mr. and Mrs. Robert C. Pfullmann
Ms. Kathleen Phillips
Ms. Anita Powell
Ms. Martha Jo Price
Mr. and Mrs. David Prince
Mr. and Mrs. Steve Ramsey
Leon and Debbie Ray
Ms. Cassandra Redd
Dr. and Mrs. Allen Richman
Dr. Carolyn J. Roberts
Ms. Stephanie L. Robinson
Mr. and Mrs. Gary Russell
Justin Dominic Ryan
Mr. and Mrs. Robert John Sabol, Jr.
Mr. and Mrs. Thornton Savage
Mr. and Mrs. H. J. Schexnayder, Jr.
Mr. and Mrs. Tom Schwab
Mildred Shankle
Mr. and Mrs. Val Sharp

Mrs. Cindy L. Silberman
Mr. and Mrs. Bill Sissom
Wayne and Mary Ann Slagle
Ms. Barbara Smith
Thomas and April Lynn Smith
Tip and Nanny Smith
Leon and Sue Smith
Dr. and Mrs. Robert A. Smith
Mr. and Mrs. Roger Sparks
Dr. Jack and Rebecca Stanly
Ms. Carolyn Spears
Mrs. Jean Stephens
Mr. and Mrs. John K. Stephens
Mr. Steven Lee Stevenson
Mike and Barb Stump
Mr. and Mrs. Gary Tatum
Gerard and Carrie Ventura
Ms. Linda Sue Wallace
Westminster Presbyterian Church
Mr. and Mrs. Norman M. Wiggington
Billy and Carol Willis
Mr. and Mrs. Charles Wilson
Mr. and Mrs. Thomas D. Wright
John and Rebecca Yarbrough
Mr. and Mrs. Richard Young

Contributor

Anonymous
Ms. Mary Akin
Ms. Rachel Anderson
Mr. Bert and Dr. Mary Appleberry
Ms. Jami Armst
Ms. Doreen Badeaux
Jack and Rebecca Bailey
Dr. and Mrs. Ronnie G. Barra
Mr. Braulio J. Barrera
Scott and Susan Bartos
Dr. Claudia Beach
Mr. and Mrs. Jerome A. Becker
Richard and Betty Berry
Mr. and Mrs. Rick Bertke
Mr. and Mrs. Miguel Blanco
Mr. and Mrs. H. J. Brunotte
Ms. Mary Cams
Ms. Sheri Sue Cassin
Mr. Robert Cavanagh
Doug and Shelba Coe
Ms. Ellen Cogswell
Mr. Charles D. Collins
Mr. and Mrs. Mark D. Cooper
Mr. and Mrs. Daniel Cotten
Mr. and Mrs. Dwain Crow
J. Kelly Cunningham and Melissa McMillian-Cunningham
Dr. Deborah Dalton
John and Doris Daniel
Mr. and Mrs. Gerald B. Davis
Ms. Katherine T. Davis
Dr. and Mrs. Harry D. Dawson
Dr. and Mrs. R. G. Dean
Alicia and Richard Deupree
Mr. and Mrs. E. L. Dolan
Mr. Mark D. Durio
East Texas Appraisal Services
Dr. Anne Elizabeth Evans
Mr. Joe T. Fuller
Mr. and Mrs. Andy George
Mr. and Mrs. Randy Godsey
Mrs. Jean Gore
Tito and Lupe Guerrero
Jerry and Toni Hale
Mrs. Sherri Dawn Hathaway
James and Leah Hawkins
Mrs. Rhonda Hieronymus

Friends of the Arts, University Series

Membership Period: September 1, 2004 through August 31, 2005
Current to February 10, 2005

Mr. John R. Holloway
Mr. Lawrence Homan
Dr. and Mrs. Tom Houston
Mr. and Mrs. Charles Hukill
Dr. and Mrs. Oren C. Irion
Louise Jacks
Tony and Anne Jacobs
Mr. and Mrs. Jim Jenkins
Mrs. Theresa Kasper
Mr. and Mrs. Reese Kennedy
Carolyn King
Mr. and Mrs. Ray Klodzinski
Mrs. Carolyn Lacy
The Drs. Lauren V. Scharff and
Michael Coon
Ken and Judith Lauter
Mr. David C. Lawson
Mr. Michael S. Mauer
Mr. and Mrs. Chad McAlester
Mr. and Mrs. George McKinney
Mrs. Sarah McMullan
Mr. and Mrs. George Millard
Mr. and Mrs. Edgar Mirabal
Roland and Jean Muckleroy
Nacogdoches County Republican
Women
Mr. Les Neal
Mr. Marc Newquist
Mrs. Cynthia Nussenblatt
Mr. Troy L. Owen
Mr. and Mrs. Edward Paschall
Mr. and Mrs. Bill Patton
Mr. and Mrs. Jim Pluss
Carissa A. Poe
James and Anne Poyner
Drs. Kenneth and Camille Price
Mr. and Mrs. Randy Price
Ms. Charlotte Jo Pruitt
Mr. and Mrs. Keith Reed
Mrs. Theresa Reeves
Mr. and Mrs. Charles Reynolds
Ms. Priscilla Robertson
Mr. and Mrs. Eugene Rolston
Ms. Mildred Rothmund
Mr. Brent Roycroft
Ms. Wanda C. Schenk
Ms. Deborah L. Schroeder
Mr. and Mrs. Ronald L. Sedtal
Mr. Michael M. Sessions
Ms. Katherine E. Shore
Mr. and Mrs. Johnny Simpson
Mr. Jon Mark Sjolander
Mr. and Mrs. Sam R. Slaydon
David and Dianna Smith
Mr. and Mrs. Sidney R. Smith
Dr. and Mrs. Arthur Speck
Mr. and Mrs. Steve Staub
Mr. and Mrs. Rod Stepan
Mr. and Mrs. Ken Swann
Mr. Russell Robert Swanson and
Mrs. Ginger Lei Posey
Temple-Inland, Inc.
Mrs. Nancy Terry
Jimmy and Sherry Ward
Mr. and Mrs. Floyd (Dock) Watson
Dr. and Mrs. Arthur C. Watson, Jr.
Ms. Shirley Waterston
Ms. Irene Welch
Mr. and Mrs. Martin Wilber
Ms. Nancy Yarbrough

Member

Bradley and Shannon Bailey
Mrs. Nelda Dickerson
Mr. and Mrs. Robert W. Schmitz
Bobbie and Raymond Smiley
Ms. Ellen L. Thomas-Armstrong
Dr. and Mrs. Larry Walker

Impresario

Stephen F. Austin State University

Producer

Nacogdoches Medical Center Hospital
The Daily Sentinel

Director

BancorpSouth Fredonia
Commercial Bank of Texas
Glaucoma Consultants of East Texas
Lehmann Eye Center
Regions Bank Stone Fort
Tipton Ford-Lincoln-Mercury, Inc.

Designer

Mr. and Mrs. Jeff Badders
Burns, Morris & Stewart, Inc.
Edward Jones Investments, Steve Barber
& Gary Russell

Greg James Dealer Group
Kennedy's Jewelers
SFA Alumni Association
SFA Foundation
Tom and Peggy Wright

Artist

A. G. Edwards & Sons, Inc., Shannon
Smith
Austin Bank of Nacogdoches
Betty F. Burr
Citizen's Bank
East Texs Carpets, Inc.
Fredonia Hotel and Convention Center
Gound Chevrolet Company
Huntington State Bank
Joe Max Green Insurance Concepts
Mize Department Store
Michael Millot, M.D.
R & K Distributors, Inc.
Texas Bank
The UPS Store
Dr. Nancy Wisely

Guarantor

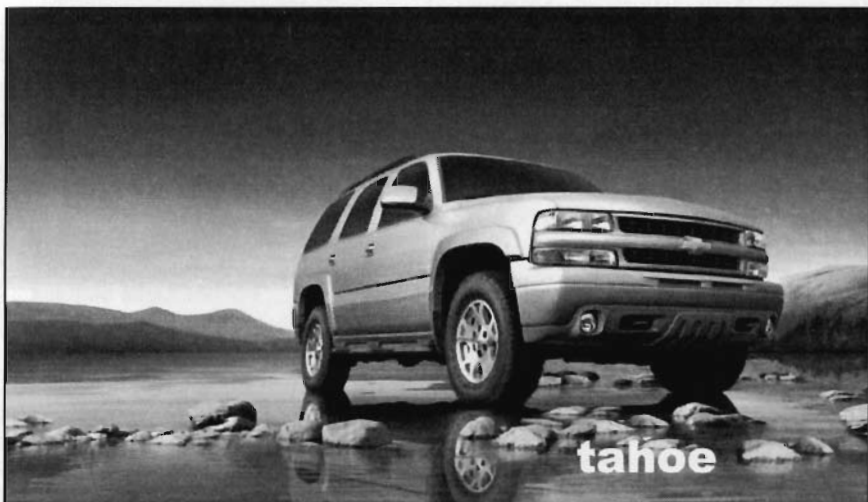
Ambiance
Mr. and Mrs. Edward Cole
Curtis & Clark Engineering, LLC
Dr. and Mrs. Robert Z. Eanes
Excel Car Wash, Inc.
Grogan Clean Care
House of Versailles Perfumery
Java Jack's Coffee House
Media Services Group
Mr. and Mrs. James H. Moore
Nacogdoches Eye Associates
Nacogdoches Gastroenterology
Bill and Sue Parsons
Ray Johnston Counseling Services
Texas State Optical
Triad Office Solutions
Ultrafit Fitness Center
University Rental
The Varsity Book Store
Wendy Wyatt Buchanan - Edward Jones
Investments
Xerographix East Texas

Sustainer

Dee and James Allums
Elaine Burgess Ashcroft
Mrs. Elisabeth Bilan
Dr. Louise Bingham
Fern Faulkner
Mel and Juanita Finkenberg
Mr. Murphy George
Durward and Mary Henry
Adele Hyncik
Mr. and Mrs. Robert M. Lawson
Mr. and Mrs. Dale Litton
Mrs. Theresa Reeves
Dr. Patricia Read Russell
Mike and Barb Stump
LTC Ben J. Sultenfuss
Doug and Joyce Swearingen
Bob and Shirley Szafran

Supporter

Dr. and Mrs. Thomas Atchison
Dr. and Mrs. Stewart Barron
Philip and Mitzi Blackburn
Mr. John F. Buck
Mr. and Mrs. Jack A. Burnell
Mr. and Mrs. John H. Butts
Dr. Sue Butts
Kent Castle
John and Doris Daniel
Dr. and Mrs. John P. Decker
George and Patricia Fitch
Dr. George Franks
Ms. Deborah K. Garrett
Ms. Jayne Garrison
Dr. and Mrs. Malcolm Graham
Ms. Mildred Hancock
Mr. and Mrs. Alvin J. Hejl
Dr. June Irwin
Drs. Gary Kronrad and Catherine Albers
Drs. Ted and Janice Ledet
Ms. Jeanette Milstead
Mr. Perry Moon
Dr. and Mrs. John T. Moore
Roland and Jean Muckleroy
Drs. Patrick and Barbara Mueller
Dr. and Mrs. Jack Nelson
Jimmy and Peggy Partin
Dr. and Mrs. William R. Petty
Carolyn M. Price
Mr. and Mrs. Randy Price
Mr. and Mrs. David Prince
Mr. Donald Richter
Ms. Mary Grace Sims
Leon and Sue Smith
Russell and Trish Smith
Larry and Anita Standridge
Dr. Jack and Rebecca Stanley
Mr. Jodie Stone
Dr. and Mrs. Lyle Thorstenson
Gerard and Carrie Ventura
Dr. Michael Walker
Dr. and Mrs. Arthur C. Watson, Jr.
Drs. Bill and Suzy Weems



GOUND CHEVROLET

MARK OF EXCELLENCE AWARD WINNER

Serving Nacogdoches for 52 years

*Our Commitment:
To give our customers the best in
Sales and Service*



UNIVERSITY SERIES

| | |
|--|-----------------------|
| Dean, College of Fine Arts | Richard Berry |
| Programming and Development | Max Morley |
| SFA Gallery | Shannon Bailey |
| Arts Information | Sylvia Bierschenk |
| Box Office and Audience Services | Diane J. Flynn |
| Facilities Manager | Steven Shirey |
| House Manager | Joshua Alan Spence |
| Ushers | Phi Mu Alpha Sinfonia |

FOR YOUR INFORMATION

Tickets

Charge tickets conveniently by phone. Visa, Mastercard, American Express and Discover are accepted. Normal box office hours are weekdays 8 am to 5 pm. On performance dates, the Box Office is open 8 am to performance time on weekdays and one hour prior to performance time on Saturdays and Sundays. The Box Office is located in Room 211 in the Griffith Fine Arts Building. Programs on the University Series are not recommended for children under five years of age. Each member of the audience must have a ticket regardless of age.

Late seating

In fairness to those already seated, patrons who have the misfortune to arrive late will be seated near the rear of the auditorium during an appropriate break in the performance.

Parking

Parking in front of the Griffith Fine Arts Building is available to those patrons who join the FRIENDS OF THE ARTS UNIVERSITY SERIES at the SUPPORTER LEVEL. Parking in other campus areas is available. We recommend the southwest corner of East College and Raguet Streets or the corner of North Street and Wettermark. Please allow ample time for your arrival.

Persons with disabilities

Persons with disabilities are requested to reserve seats as soon as possible to request special assistance or accommodations needed for participation in events. Parking is provided in front of the Griffith Fine Arts Building on Alumni Drive. The elevator is located in the East Tower (campus side). Locations for wheelchair seating are available on the first floor of the W. M. Turner Auditorium. Program booklets in large type are available for visually impaired persons. Please call the Box Office at least two days in advance of the event and a copy will be held for you.

Rest Rooms

Rest rooms and drinking fountains are located in the lobby adjacent to the auditorium on the first level and in the hallway outside the balcony.

Telephone

A public telephone is located in the East Tower, Level Two, next to the elevator.

Food, beverages and smoking

Please do not take food or drinks into the auditorium. The use of tobacco products is not permitted in the Griffith Fine Arts Building.

Cameras, paging devices, cell phones and other electronic devices

Please deactivate all electronic devices before entering the auditorium. Patrons may also check them with our ushers prior to entering the auditorium so they may be guarded by the House Manager. Patrons who expect to be on call while attending a performance are requested to leave their names and seat locations with the House Manager. You will be contacted immediately and discreetly when called. Cameras and recording devices are not permitted in the auditorium.

When ticket holders can't attend

In the event you are unable to attend an event, please do one of the following:

1. Give your ticket to a friend; or
2. Call us and donate your ticket to an SFA student.

We regret there can be no refunds. All sales are final.

Mailing lists

To receive information about future attractions in the College of Fine Arts, please complete a mailing list card available at the Box Office or call 468-6407.

Lost and found

Patrons who lose articles while attending an event may make inquiries with the House Manager or call the Box Office during regular office hours.

To contact us, call:

| | |
|---------------------------------------|-----------------------------------|
| Dean, College of Fine Arts | 468-2801 |
| Programming and Development | 468-1237 |
| Arts Information | 468-5820 |
| Box Office and Arts Information | 468-6407 |
| | or toll free 1-888-240-ARTS |

Saluting the performing and visual arts

Stephen F. Austin State University



Free checking Full-service Saturday banking
Home and auto loans Online banking
MasterMoney debit card Trust & investment services



Big enough to serve. Small enough to care.

1009 N. University Drive • (936) 559-5100

www.fbtet.com

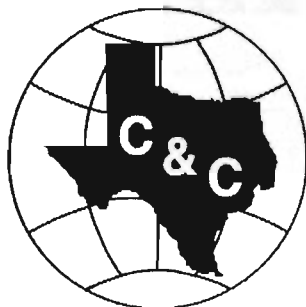
Member
FDIC



Cleveland • Diboll • Hemphill • Jasper • Kirbyville • Lufkin
Nacogdoches • Pineland • San Augustine • Splendora

Curtis & Clark

Engineering, LLC



Nacogdoches, Texas
564-5356



MICHAEL MOLLOT, M.D.

Specializing in
STOMACH & COLON DISORDERS
Endoscopy • Liver Disease • Colon
569-6449



Two Locations
1225 N. Mound & 619 Russell Blvd.

*We Proudly Support
The Performing and Visual Arts
at
Stephen F. Austin State University*

**RESPONSIBILITY
MATTERS**



Budweiser
KING OF BEERS

R & K Distributors, Inc.



McKnight Financial Services

*Retirement • Investments • Life Insurance
Long-Term Care • Health Insurance*

Financial Planning that meets your needs.

**Bob McKnight
Roger McKnight**

Wes McKnight

Phone: (936) 564-2307



McKnight Financial
Services



MEDIA SERVICES GROUP

Expertise Experience Enthusiasm

Lufkin Waco Estes Park, CO

936-637-7593

1-800-537-8780

DVD Authoring, Replication and Distribution
VHS to DVD authoring
VNR - Video News Releases
Television Commercials
Long Form TV Programs
Industrial and Sales Presentations
Web Production and Hosting
Event Management
Public Relations Consulting
Crisis Communications

www.msget.com

EAST TEXAS CARPETS, INC.

1115 N. University Dr., Nacogdoches, TX
936-564-6742

Lisa Thomson, Interior Designer



GREG JAMES CHEVY COUNTRY

U.S. Hwy 69 South - Rusk



PROUDLY SUPPORTS

The College of Fine Arts

and the

SFA University Series

More Gifts! More Casual!



More Fun!



AMBIANCE

303 North Street | Nacogdoches | 564-4906



ASK ABOUT OUR
LAMPE BERGER
FREQUENT BUYER
PROGRAM!

(936) 564-2634
(936) 569-0844
1-800-858-1252



TEXAS STATE OPTICAL
OF NACOGDOCHES

DR. MELANIE MONTES VARDEMAN
THERAPEUTIC OPTOMETRIST
OPTOMETRIC GLAUCOMA SPECIALIST

4729 N.E. Stallings Drive, Nacogdoches, Texas (Across from Medical Center Hospital)

Grogan Clean Care

24-HOUR EMERGENCY SERVICE

Carpet Cleaning Certified Operators
Oriental Rugs - Hand Washed

Keith and Pat Grogan, Owners 1406 East Starr 564-5722

Look forward to retirement by planning today.



Wendy Wyatt Buchanan, AAMS '85

424 East Main

Nacogdoches, TX

936-564-2327 • 1-800-801-2327

www.edwardjones.com

Member SIPC

2003 Outstanding Young
Alumnus Award Recipient

Edward Jones

Serving Individual Investors Since 1871

You might not be able to do everything at once, you can however do it all in one place.



Let us help you with that.

Shipping Services

Packaging Services

Mailbox & Postal Services

Copying Services

Finishing & Printing Services



The UPS Store™

The UPS Store #3855
3205 N. University Ste #D
Nacogdoches, TX 75965

(Across from the Post Office)

Tel: (936)559-5614

Fax: (936)559-0434

Email:

store3855@theupsstore.com

Jodie Stone, Owner

©2003 United Parcel Service of America, Inc.



**THIS PAINTING WAS ONCE
AUCTIONED FOR OVER
\$85 MILLION DOLLARS TO AN
ENTHUSIASTIC COLLECTOR.**

**HE MUST HAVE HAD
OVERDRAFT PRIVILEGE.**

**FREE CHECKING WITH OVERDRAFT PRIVILEGE
FROM HUNTINGTON STATE BANK.**

**JUST ONE OF THE MANY PRODUCTS OFFERED TO
HELP YOU ENJOY THE FINER THINGS IN LIFE.**

(other charges may apply)

COME GROW WITH US!



4822 NORTH ST. | 462.8800 | WWW.HUNTINGTONSTATEBANK.COM

IN TUNE WITH EAST TEXAS.



**Austin
Bank**

www.austinbank.com • Member FDIC

3120 North Street • Nacogdoches • (936) 559-5500



**The
Fredonia**

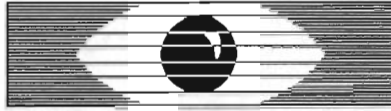
Hotel and Convention Center

(936) 564-1234

Email: reservations@fredoniahotel.com

See us at: www.fredoniahotel.com

200 North Fredonia Street • Nacogdoches, Texas 75961



NACOGDOCHES EYE ASSOCIATES

Eyecare for those who know the difference

3208 N. University Drive, Suites B & C,
Nacogdoches

Ashley Risner, O.D.
Board Certified in Ocular
Therapeutics and Glaucoma

564-7661 or 564-EYES

MARK LANIER, O.D.
Board Certified in Ocular
Therapeutics and Glaucoma

The House of Versailles

Paris  *Perfumery & Gifts*



Christy Rogers
Owner

280 Ladies Perfumes • 80 Men's Colognes
Gels, Powders, Lotions & Soaps
Crabtree & Evelyn® Burt's Bees®
Circle E® • Votivo® • Jewelry & Gifts

936-569-1818 • M-F 10-6 • Sat. 10-4 • 404 E. Main, Nacogdoches

Texas Bank

MEMBER F.D.I.C.

**500 North Street
Nacogdoches, Texas**



Another Round of Applause for the

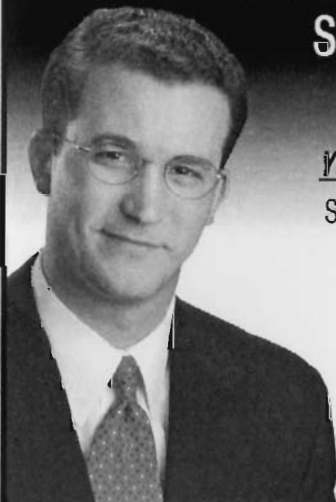
SFA University Series!

Citizens 1st BANK

3010 University Dr. • 936-560-1401 • www.citizens1stbank.com



**Create a Retirement Plan That Works,
So You Won't Have To.**



YOUR FULL-SERVICE FINANCIAL CONSULTANT

Stocks | Mutual Funds | IRAs | Retirement Plans

Life Insurance | 529 Plans | Annuities

Long Term Care | Bonds | Estate Planning



EDWARDSSM

FULLY INVESTED IN OUR CLIENTSSM

A.G. Edwards & Sons, Inc. | Member SIPC

SHANNON SMITH

shannon.smith@agedwards.com

560-3930

2610 N. University Drive



ROLEX



Kennedy's
JEWELERS

201 East Main
Nacogdoches, TX 75961
(936) 564-7671, Fax (936) 564-2650