

2005-2006 UNIVERSITY SERIES

THE HOTTEST TICKET IN TOWN!

Stephen F. Austin State University College of Fine Arts
and School of Theatre present



THE TEMPEST

by
William Shakespeare
Produced by the SFA School of Theatre

Nov. 15-19, 2005, 7:30 p.m.
W.M. Turner Auditorium

Sponsored in part by



MAKE THE ROAD
YOUR CANVAS.

THE DRIVE,
YOUR WORK OF ART.

2006 LINCOLN NAVIGATOR



1115 NORTH ST. | NACOGDOCHES
1-888-4TIPTON | WWW.TIPTONFORD.COM

The University Series

2005-2006 The Hottest Ticket in Town!

The Art Center and Griffith Gallery are open Tuesday through Sunday, 12:30-5 p.m.
All performances at 7:30 p.m.

- September 9 - October 16 *SFA Faculty Exhibition*
The Art Center
- September 16 - October 16 *Barry Anderson: Epic Escapism & Suspension*
Griffith Gallery and School of Art Gallery
- October 15 *Stars and Stripes Forever: A Patriotic Review*
featuring the SFA A Cappella Choir W. M. Turner Auditorium
- October 27 *Betty Buckley: Deep in the Heart*
W. M. Turner Auditorium
- November 15 - 19 *The Tempest* by William Shakespeare
an SFA School of Theatre Production W. M. Turner Auditorium
- November 29 *The Salzburg Marionettes*
presenting *The Magic Flute* by W. A. Mozart W. M. Turner Auditorium
- January 31 *Ballet Hispanico*
W. M. Turner Auditorium
- February 8 - March 26 *In the Path of the Blaue Reiter*
German Expressionist Portfolios, Prints and Books Griffith Gallery
- February 21 - 25 *The Night of the Iguana* by Tennessee Williams
an SFA School of Theatre Production W. M. Turner Auditorium
- March 6 *Salzburg Chamber Soloists with Pianist Andreas Klein*
W. M. Turner Auditorium
- March 23 *Los Hombres Calientes*
W. M. Turner Auditorium
- April 6 - 8 *SFA Opera*
an SFA School of Music and School of Theatre Production W. M. Turner Auditorium
- April 7 - May 5 *Paul Brach: 1985-2005*
Griffith Gallery

For information, call (936) 468-6407 or 1 (888) 240-ARTS



SFA ALUMNI FOUNDATION

Fine Arts Scholarships

Representing nearly \$860,000
that annually benefit students
in the College of Fine Arts

Kermit & Margaret Agee Scholarship

Elsie Arcscott Scholarship

Bridges/McKinney Scholarship

Perry & Martha Brittain Scholarship

Zack Brittain Scholarship

Paul Buskirk Memorial Scholarship

Zelma Childers Award

Wanda Cochran Scholarship

Ed & Gwen Cole Theatre Scholarship

J.T. Cox Scholarship

Melba Cranford Scholarship

John & Doris Daniel Scholarship

John Dickson Scholarship

E. Diane Ford Scholarship

Diane, Casey, and Court Fouts Scholarship

H.H. & Bertha Gibson Scholarship

W.H. & Bennie Atkinson Gray Scholarship

Emily Hargraves Scholarship

Charles Lee Hill Scholarship

Doris & James Jones Scholarship

James G. & Doris Jones Scholarship

Brian LaBarbera Memorial Scholarship

Lenville Martin Award

Pat Roberdeau Mast Scholarship

Brad Maule Award

Sandy McGrath Scholarship

Mamie Middlebrook Scholarship

Mel Montgomery Scholarship

Ida Pritchett Scholarship

Mary Osborne Ray Scholarship

Karl Schlicher Award

Barbara Schoenewolf Scholarship

SFA Theatre Scholarship

Simpson/Miller Scholarship

Aaron & Barbara Smith Scholarship

William M. Turner Scholarship

Jimmie Hudgins Twirl-o-Jack Scholarship

Stephen Weeks Scholarship

Anonymous Scholarship



SFA Alumni Association
www.sfaalumni.com

SFA Alumni Association

PO Box 6096-SFA Station • Nacogdoches, TX 75962

Toll Free: (800) 765-1534 • Ph: (936) 468-3407 • Fax: (936) 468-1007

alumni@sfasu.edu • www.sfaalumni.com

Like Diamonds, Endowments are Forever.

The SFASU Foundation manages more than \$9 million in permanent endowments that support SFA, its students and programs.

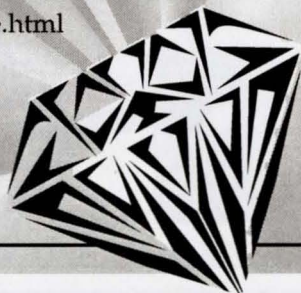
Many of these endowments support the College of Fine Arts at SFA. If you would like to make a difference during your lifetime and beyond, establish an endowment today.

For more information and details regarding endowments, please contact Jerry Holbert, Executive Director.

STEPHEN F. AUSTIN STATE UNIVERSITY FOUNDATION, INC.

P.O. Box 6092, SFA Station
Nacogdoches, Texas 75962
(936) 468-5406

www.givetosfa.sfasu.edu/create.html



*"The fool doth think
he is wise, but the wise man knows
himself to be a fool."*

-William Shakespeare



GLAUCOMA CONSULTANTS OF EAST TEXAS



Shannon L. Smith, M.D., F.A.C.S.

*Diplomate, American Board of Ophthalmology
Fellowship Trained in Glaucoma*

3000 A N. University Drive Nacogdoches

936-564-3600 or Toll Free 1-877-810-3937

www.eyesoftexas.us



DEAR FRIENDS OF THE ARTS,

I WOULD LIKE TO WELCOME YOU TO ANOTHER FINE PERFORMANCE AT THE STEPHEN F. AUSTIN STATE UNIVERSITY COLLEGE OF FINE ARTS.

TIPTON FORD-LINCOLN-MERCURY IS VERY PROUD TO PLAY A PART IN BRINGING THE BEST THE FINE ARTS HAS TO OFFER RIGHT HERE TO OUR HOMETOWN. SO SIT BACK, RELAX AND ENJOY THE SHOW.

SINCERELY,

NEAL SLATEN
PRESIDENT



1115 NORTH ST. | NACOGDOCHES
1-888-4TIPTON | WWW.TIPTONFORD.COM

TENTS • WEDDINGS • PARTIES • TOOLS

UNIVERSITY RENTAL

Try our chocolate fountain!

560-0800

JIM ELDER, OWNER

732 N. UNIVERSITY



Excel Car Wash & Valvoline Express Care

4101 North Street, Nacogdoches

560-1453

Valvoline Express Care

1620 South Street, Nacogdoches

560-3457

Valvoline Express Care

2601 North Street, Nacogdoches

552-7279

SIMPLE PEACE OF MIND.

JMG / i/c

JOE MAX GREEN
INSURANCE CONCEPTS

564-0221

3310 N. UNIVERSITY



**OFFICE
SOLUTIONS**

**Computer Networks
Digital Copiers
Intergrated Fax
Supplies**

Phone: 560-6500

**RAY JOHNSTON, L.C.S.W. - A.C.P.
Counseling Services**

- Individual, Family, Marital & Divorce;
Children, Adolescents
- Depression, Stress/Work/School and
Relationship Issues
- Alcohol and Drug Problems
- Most insurance accepted including
Medicare, Medicaid, BCBS,
CHAMPUS/Tricare
- Negotiable Rates
- Close to SFA Campus

24 hours - 569-8570
fax: 560-1144

Our reputation speaks for itself.

Bernhold Averhach
Music

washes away from the soul
the dust of everyday life.”



Edward Jones®

Serving Individual Investors Since 1871

Wendy Wyatt Buchanan, AAMS

424 East Main, Nacogdoches, TX
936-564-2327 • 1-800-801-2327

SFA College of Fine Arts and University Series present

The Salzburg Marionette Theater's production of

The Magic Flute by W.A. Mozart



Tuesday, Nov. 29, 7:30 p.m.

W.M. Turner Auditorium

"Spellbinding artists."

-The New York Times

Tickets: \$7.50 - \$30,
including discounts for
seniors, students and children



For tickets or more information,
visit www.finearts.sfasu.edu or
call (936) 468-6407 or (888) 240-ARTS

Sponsored in part by



A WEALTH OF INSIGHT

The trusted advice you need for financial success.

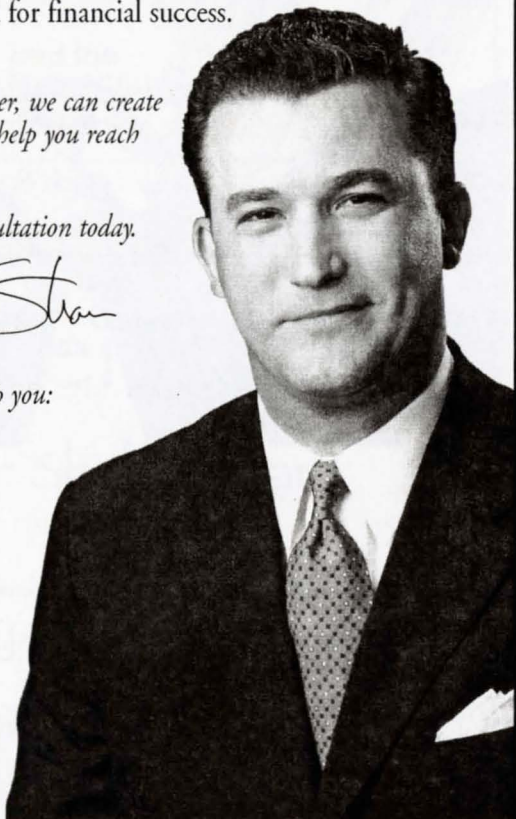
Hi, I'm Shannon Smith. Together, we can create a comprehensive plan that will help you reach your goals.

Call me for your financial consultation today.



We can develop strategies to help you:

- Create Wealth.
- Preserve Wealth.
- Manage Wealth.
- Distribute Wealth.



SHANNON SMITH

560-3930

shannon.smith@agedwards.com
2610 N. University Drive



EDWARDSSM
FULLY INVESTED IN OUR CLIENTSSM

A.G. Edwards & Sons, Inc. | Member SIPC



*If art is that which causes
thought or emotion,
then the gift of a child is
the greatest art.*

 **CBT_x**
Commercial Bank of Texas, N.A.

*Enthusiastic admirer of
artists and their future.*

SFA SCHOOL OF THEATRE
THE UNIVERSITY SERIES
and the
COLLEGE OF FINE ARTS
present

The Tempest

by William Shakespeare

Directed by C. W. Bahs

Scenic Design by Tomy Matthys
Costume Design by Angela Bacarisse
Lighting Design by CC Conn
Makeup Design by Victoria Thompson
& Jessica Tinker
Original Music by Stephen Lias
Sound Design by Roni Lias
Choreography by Juanita Finkenberg
Stage Manager: Amber Talley
Assistant Director & Dramaturg
C. Dexter Kinsman
Assistant Director: Jeremy Barrow

NOVEMBER 15-19, 2005

7:30 P.M.

W.M. TURNER AUDITORIUM

Dramaturg's Note

The Tempest, thought to be Shakespeare's last artistic effort for the stage, was first presented at court in 1611 and was printed in the First Folio in 1623.

Classified as a romance, *The Tempest* is Shakespeare's most original plot. Shakespeare characteristically borrows from classical sources and reshapes them according to his own creative imagination. This is not the case for *The Tempest*. While he does include such elements of the classical *romance* as a "love story," noble characters, supernatural events, and exotic places, the plot is entirely of his own creative imagination.

The idea of *The Tempest* was perhaps suggested to Shakespeare by an actual wreck in 1609 of the *Sea-Adventure*, a supply ship bound for the English colony in Virginia. Miraculously, the crew survived on a Caribbean island for the ensuing months and eventually repaired their ship. The story of their survival became very popular but led to rising anxiety over the colonization of the New World.

In this light, we can interpret *The Tempest* as Shakespeare's treatise on the New World. In this 'brave, new world' we have the possibility of establishing a utopia, one where there is equality among people, innocence, purity, and an abundance of food and goods. Unfortunately, what we see on Prospero's island is a reenactment of the history of the world, with its endless power struggles and themes of oppression, slavery, revenge, and terrorism. Perhaps Shakespeare is suggesting that before we can conquer the New World, we must first conquer our own brute natures.

--C. Dexter Kinsman

About the Cast

Justin Urias Bauer (Adrian) is a junior from Austin. His SFA credits include *Six Characters in Search of an Author*, *The Yellow Boat*, *The Vise*, *The Devil's Karma*, and *The Fifth Sun*. JUB has served as Assistant Director for *Shooting Simone*, Stage Manager for *Prague Summer*, and Assistant Stage Manager for *Harvey*.

Cara Elizabeth Boden (Erzulie/Chorus) is a sophomore from Arlington. She has appeared in the SFA Mainstage production of *Hair*, in the Public One-Act *The Whole Shebang*, and in the Studio Hours *Diatribes* and *The Role of Della*.

Sara Boland-Taylor (Miranda) is a sophomore from Arlington. Her SFA credits include *Sideways Stories from Wayside School*, *Shooting Simone*, *Quake*, *The Vise*, *The Madness of Lady Bright*, and *The Role of Della*. Sara is on the President's List.

Thomas Brazzle (Caliban), a junior from Arlington, has acted in *The Member of the Wedding*, *Hair*, *The Two Maples*, *Sideways Stories from Wayside School*, *A Fallen Man*, *The Man Who Came to Dinner*, and *Lilly's Purple Plastic Purse*. Thomas was part of the Original Cast '05 and is currently working on the OC's Singapore Project.

Ashley Clarke (Sebastian), from Basingstoke, England, is a part of the American Theatre Arts (ATA) program. As part of the Central Studio Youth Theatre he acted in *The Crucible*, *Find Me*, and *Saved*. At Rose Bruford, Ashley's acting credits include *Edmond*, *The Mercy Seat*, *A Fool for Love*, *Still Life*, and *A View from the Bridge*.

Devin Collins (Ferdinand) is a junior from Schertz. His mainstage credits include *Hair*, *The Man Who Came to Dinner*, *The Shadow Box*, and *Trudi and the Minstrel*. Devin has also appeared in the SFA Publics *Three Days of Rain* and *The Fifth Sun*. Devin also was a part of the 2005 Original Cast.

Kera Dacy (Ayida/Chorus) is a sophomore from McNeil High School in Austin. Her SFA Mainstage acting credits include *The Member of the Wedding* and *Hair*. She also appeared in the Original Cast in 2005.

Clark Devlin (Shipmaster/Chorus) is an ATA student from Dunfermline, Scotland. He has performed in a series of staged readings at the Soho Theatre in London. At Rose Bruford College Clark's credits include *The Children's Hour* and *Grief*.

Brittany Djie (Chorus), a sophomore from Cypress, has appeared in the SFA productions of *The Member of the Wedding* and *Baby Talk*. At Cypress Springs High School, Brittany's credits include *The Wizard of Oz*, *Little Shop of Horrors*, and *Brighton Beach Memoirs*.

About the Cast - continued

Jessee Foudray (Chorus) is a sophomore from Waller High School, where she appeared in *Necessary Targets*. At SFA she has worked on the props crew for *Harvey*. *The Tempest* marks her SFA Mainstage acting début.

Christopher J. Gamel (Chorus), a sophomore from Sugar Land, has acted in *Hair*, *The Madness of Lady Bright*, and with the 2005 Original Cast. At Stephen F. Austin High School, Chris appeared in *The Importance of Being Earnest* and *Fiddler of the Roof*.

Micah "Man" Goodding (Trinculo) is a Master Puppeteer, freelance illustrator, and cartoonist. His acting credits at SFA include *Harvey*, *Hair*, *Self Torture & Strenuous Exercise*, and *The Waste Disposal Unit*. He has also appeared with the Texas Shakespeare Festival and in national commercials.

Darrell D. Grant (Chorus; Assistant Choreographer) is a senior from Houston. His SFA credits include *The Shadow Box*, *Trudi and the Minstrel*, *Hair*, *The Gulf*, *A Fallen Man*, *Pericles*, *Die Fledermaus*, and *The Two Maples*. He also appeared in the Original Cast 2003-2004.

Xzavien Hollins (Chorus) is a freshman from Richmond, making his début on the SFA Mainstage. He attended George Bush High School, where his credits include *The Christmas Carol*, *Medea*, and *Anything Goes*.

Chris Kennedy (Stephan), president of the Beta Phi cast of the theatre honorary Alpha Psi Omega, acted in *Sylvia*, *Harvey*, *Sideways Stories from Wayside School*, *The Seagull*, *Women in Flames*, *The Man Who Came to Dinner*, and the 2005 Original Cast. He directed *Ohio Impromptu* and assistant directed *Anton in Show Business*.

Kyle Kennedy (Gonzalo) is a new member of the SFA faculty. He has an MFA in Acting from the University of Texas and has taught at Galveston College, the University of Houston, Kean University, and Manatee Community College. He has acted off-Broadway, in television and film, and with the Asolo Theatre Company in Florida.

Ashleigh "Grace" Lubeck (Ariel) is a junior from Sugar Land. She has appeared in such SFA productions as *Six Characters in Search of an Author*, *Pericles*, *Shooting Simone*, *The Fifth Sun*, and *The Whole Shebang*.

Nadaha McCullough (Chorus) is making her SFA Mainstage début in *The Tempest*. A senior from Haltom City, she appeared in *Après Opera* last semester. Her acting credits outside of SFA include *Peter Pan*, *Guys & Dolls*, *Snoopy!!!*, *Honk!*, and *Baby with the Bathwater*.

About the Cast -- continued

Alan Nielsen (Alonso) is Professor of Theatre. In addition to his SFA directing credits, he has acted in several Mainstage productions and SFA films. He has acted professionally and is a published author, playwright and composer/lyricist; he twice received the Teaching Excellence Award in Fine Arts. A PhD graduate of City University of New York, he is a member of the Dramatists Guild.

Tim Olivares (Antonio), a sophomore from San Antonio, has appeared in the SFA productions of *Hair*, *Three Days of Rain*, and *Reverse Transcription*. He was in the Original Cast in 2005 and is a member of the President's List.

Becky Percy (Azaka/Chorus) is an ATA student from Essex, England. She performed at the London Palladium in the Essex Youth Roadshow and in staged readings at the Soho Theatre in London. At Rose Bruford College Becky acted in *The Children's Hour*.

John Phillips (Prospero) is a 1999 graduate of SFA, where he appeared in major roles in numerous Mainstage productions, including *King Lear*, *A Streetcar Named Desire*, and *The Importance of Being Earnest*. Professional credits include *Antony and Cleopatra* with the Odyssey Theatre Ensemble (New York), *Tartuffe* and *Medea* with Mythmakers Theatre (South Carolina), and *The Play's the Thing*, *Othello*, *Cymbeline*, and *As You Like It* at American Players Theatre (Spring Green, Wisconsin).

Joshua E. Real (Boatswain/Chorus), a junior from Kingwood in the BFA program, has acted on the SFA Mainstage in *Trudi and the Minstrel*. Josh's other SFA production credits include *The Yellow Boat*, *Quake*, and *Après Opera*.

Natasha Vincent (Chorus), an ATA student, is from Dorset, England. Her acting credits include *Angels in America*, *Medea Redux*, and *Kennedy's Children*. Tasha has also performed as a dancer at Disneyland Paris.

About the Director

C. W. Bahs (Director) is Director of the School of Theatre at SFA. He is former Chair at the University of Wyoming, and he was honored by his *alma mater*, Bowling Green State University, as "Outstanding Alumnus." His SFA directing credits include *Sylvia*, *Follies*, *Cabaret*, *The Miracle Worker*, *King Lear*, *A Streetcar Named Desire*, *I Do! I Do!*, *Murder at the Howard Johnson's*, *The Glass Menagerie*, and *The Madwoman of Chaillot*.

Synopsis of *The Tempest*

Act I: Twelve years ago, Prospero was the Duke of Milan until his brother Antonio, conspiring with Alonso, the King of Naples, usurped his position. With the help of Gonzalo, Prospero was able to escape with his infant daughter Miranda and the books that are the source of his voodoo and power. Prospero and his daughter arrived on the island where they remain.

A storm strikes a ship carrying Alonso, Ferdinand, Sebastian, Antonio, Gonzalo, and Adrian. The royal court and the mariners fear for their lives. Lightning cracks and hits the ship. The sight of the wreck leaves Miranda distraught, but Prospero reveals to her that he orchestrated the shipwreck that has at last sent his enemies his way and assures her that everything is all right.

Prospero calls forth his chief magical spirit Ariel. She describes what happened on board the ship during the tempest and assures Prospero that everyone is safe and is dispersed about the island in small groups. Ariel reminds Prospero that he promised her freedom a year early if she performed his bidding, but Prospero chastises her and reminds her of the horrible fate from which he rescued her. Prospero then orders her to make herself invisible.

Miranda and Prospero visit Caliban, Prospero's servant. Caliban curses Prospero for taking the island from him, and Prospero and Miranda berate him for being ungrateful. Prospero sends Caliban to fetch firewood. Ariel, invisible, enters, leading in the awed Ferdinand. Miranda and Ferdinand immediately fall in love. Prospero is happy, but decides he must upset things temporarily to test their love. He threatens Ferdinand, and when Ferdinand draws his sword, Prospero charms him and leads him off, ignoring Miranda's cries for mercy.

On another part of the island, the royal court give thanks for their safety but worry about the fate of Ferdinand. Gonzalo tries to maintain high spirits by discussing the beauty of the island, but Antonio and Sebastian undercut him. When the others fall asleep under the spell of Ariel, these two then begin to discuss the advantages of killing the king. The two agree and are about to stab the sleeping men when Ariel causes Gonzalo to wake with a shout. Everyone wakes up, and Antonio and Sebastian claim they were protecting the king from an unseen pack of lions. Alonso and his party continue to search for Ferdinand.

Caliban, meanwhile, is hauling wood for Prospero. When Caliban sees Trinculo, believing him to be a harmful spirit, he hides. Scared of the coming storm, Trinculo crawls under Caliban's cloak. Stephan, drunk and singing, comes along and stumbles upon the bizarre spectacle. Caliban, hearing the singing, cries out. Stephan decides that this monster requires liquor. Trinculo recognizes his friend Stephan and calls out to him. Soon the three are sitting up together and drinking.

Synopsis of *The Tempest*

Act II: Prospero puts Ferdinand to work hauling wood. Ferdinand finds his labor pleasant because it is for Miranda's sake. Miranda, thinking that her father is asleep, tells Ferdinand to take a break. Miranda then proposes marriage, and Ferdinand accepts.

Meanwhile, Stephan, Trinculo, and Caliban are now drunk and raucous. Ariel appears and provokes them to fight with one another. Caliban proposes that they kill Prospero, take his daughter, and set Stephan up as king of the island. Stephan agrees, and the three prepare to set off to find Prospero. They are distracted, however, by Ariel's music and follow it off.

Alonso, Gonzalo, Sebastian, Antonio, and Adrian grow weary from traveling and pause to rest. Prospero causes a banquet to be set out by strangely shaped spirits. As the men prepare to eat, Ariel appears like a harpy and accuses the men of supplanting Prospero and says she was sent by Fate to punish them for their sins. She vanishes, leaving Alonso feeling vexed and guilty.

Prospero now softens toward Ferdinand and welcomes him into his family as the soon-to-be-husband of Miranda. Prospero asks Ariel to call forth Azaca, Erzulie, and Ayida to perform a masque celebrating the rites of marriage and the bounty of the earth for Ferdinand and Miranda. A dance follows but is interrupted when Prospero suddenly remembers the plot against his life.

He sends the spirits away and Ariel tells her master of the three men's drunken plot. Ariel and Prospero set a trap by hanging beautiful clothing in Prospero's cell. Stephan, Trinculo, and Caliban enter looking for Prospero and, finding the beautiful clothing, decide to steal it. They are immediately attacked and driven off by vicious dogs.

Ariel brings Alonso and the others before Prospero. Prospero confronts Alonso, Antonio, and Sebastian with their treachery, but forgives them. Alonso tells Prospero of Ferdinand's death; Prospero says that he recently lost his own daughter. He then reveals Ferdinand and Miranda playing chess. Alonso and his companions are amazed by the miracle of Ferdinand's survival.

Ariel arrives with the Boatswain and mariners. The Boatswain informs the court that their ship was found in excellent condition. Ariel then releases Caliban, Trinculo and Stephan, who then enter wearing their stolen clothing. Prospero and Alonso send them off. Prospero invites Alonso and the others to stay for the night so that he can tell them the tale of his life in the past 12 years. After this, the group plans to return to Italy. Prospero, restored to his dukedom, will retire to Milan. Prospero gives Ariel one final task—to make sure the seas are calm for the return voyage—before setting her free. Finally, Prospero delivers an epilogue, asking the audience to forgive him for his wrongdoing and to set him free.

The Cast

Prospero	John Phillips
Miranda	Sara Boland-Taylor
Ariel	Ashleigh "Grace" Lubeck
Caliban	Thomas Brazzle *
Ferdinand.....	Devin Collins *
Alonso.....	Alan Nielsen
Antonio	Tim Olivares
Sebastian	Ashley Clarke
Gonzalo	Kyle Kennedy
Adrian.....	Justin Urias Bauer
Trinculo	Micah "Man" Goodding
Stephan.....	Chris Kennedy *
Shipmaster/Insect	Clark Devlin
Boatswain/Vicious Dog	Joshua E. Real
Ayida/Sailor	Kera Dacy
Azaca/Sailor	Becky Percy
Erzulie/Wave/Watchdog	Cara Elizabeth Boden
Sailor/Vicious Dog	Darrell D. Grant *
Sailor/Insect/Vicious Dog	Christopher J. Gamel
Sailor/Mystic Shape/Vicious Dog	Xzavien Hollins
Wave/Watchdog/Mystic Shape	Brittany Djie
Sailor/Insect	Nadaha McCullough
Wave/Watchdog/Insect	Jessee Foudray
Wave/Watchdog	Natasha Vincent

The Setting

The time: The early 19th century.
The place: The swamps of Louisiana.

There will be one 15-minute intermission.

* Designates a member of the Beta Phi cast of
Alpha Psi Omega,
the national honorary dramatics fraternity

Director's Note

I have come to appreciate the plays of Shakespeare not by reading them, not by studying them, not through theory but through practice--the practice of the living Shakespeare, the playwright of the theatre. Of course, we all recognize that these plays are among the greatest achievements in dramatic literature and that they deserve to be studied and analyzed. But we must remember, when reading all the biographies about Shakespeare and his plays, that the words come first. In the end, there is nothing greater than a single actor on the stage speaking the lines of Shakespeare. Everything important that I know about Shakespeare and his plays comes from the practical business of doing Shakespeare. The task of classifying Shakespeare, criticizing Shakespeare, I happily leave to others. For me, his plays really do live on stage and not on a printed page. That is why he wrote them, and that is how we can best appreciate them. I believe that Shakespeare has enriched my understanding of life immeasurably. I hope you'll let him do the same for you.

Finally, one last note. When I selected *The Tempest* for production over a year ago, I had no thought of the material destruction and the multitude of human victims that would be left in the wake of our own tempests: Hurricanes Katrina and Rita. Further, I had no idea when I and scene designer Tomy Matthys journeyed to the swamps of Louisiana just outside New Orleans that in only a few short months this area would be virtually destroyed by a real hurricane. The setting we chose for this play was truly coincidental. However, we have all been touched by the devastation and tragedy that have resulted. As Miranda says to her father, Prospero, following the "tempest": "O, I have suffered with those I saw suffer." So have we all.

--C.W. Bahs

About the Artistic Staff

Angela Bacarisse (Costume Designer) has designed over 200 productions in academic and professional theatres across the country. Her most recent SFA costume designs include *Anton in Show Business*, *The Shadow Box*, *Trudi and the Minstrel*, *Sylvia*, *Six Characters in Search of an Author*, and *Hair*.

Jeremy Barrow (Assistant Director) has served as Assistant Director for *Trudi and the Minstrel* and *Harvey*. His acting credits include *Les Liaisons Dangereuses* and *Romeo and Juliet*. This semester Jeremy directed the Studio Hour *Diatribes*.

Barbara Blackwell (Costume Shop Supervisor) designed costumes for *The Member of the Wedding*, co-designed *Trudi and the Minstrel*, and was Costume Illustrator for *The Land of the Dragon*. She became Costume Shop Supervisor in 2000.

CC Conn (Lighting Designer) joined the SFA faculty this year. She has designed for theatre, dance and concert performances in Indiana and Georgia. Lighting design credits include *The Night Larry Kramer Kissed Me*, *Pal Joey*, and *Guys and Dolls*. CC designed lights and sound for *Anton in Show Business* earlier this semester.

Ashley Douglas (Assistant Stage Manager) is a freshman from Jacksonville High School, where her stage management credits include *Inventing Van Gogh* and *The Retreat from Moscow*. She also did lights for *Terra Nova*, among other credits.

Juanita Finkenberg (Choreographer) earned her MA from California State University in Los Angeles. She is a dancer and a certified fight choreographer. She has worked all four seasons of the New Plays Festival, and has contributed to other recent productions such as *Hair*, *The Two Maples*, *Pericles*, *Bacchae*, *Follies*, and *Hamlet*.

Izchel Hernandez (Assistant Choreographer), a sophomore from San Benito, acted in *Six Characters in Search of an Author* and danced in *Die Fledermaus*. She also crewed *The Yellow Boat*, *The Waste Disposal Unit*, and *Quake*. Izchel is also a dance minor.

C. Dexter Kinsman (Assistant Director/Dramaturg) is a junior from Schertz. He has served as Assistant Director in such SFA productions as *Hair* and *The Yellow Boat*, and as Dramaturg for the productions of *The Member of the Wedding*, *Hair*, and *The Man Who Came to Dinner* (in which he also acted).

Sonia Elizabeth Lerner (Assistant Costume Designer) is a senior from Missouri City. She was Assistant Costume Designer for *Harvey* and Lighting Designer for *Self Torture and Strenuous Exercise*. Sonia also appeared in *Hair* and was a part of the Original Cast.

About the Artistic Staff - continued

Roni Lias (Sound Designer) was Sound Designer for *The Member of the Wedding* and *Harvey*. She also designed sound for *Macbeth*, *A Midsummer Night's Dream*, and *Henry V*, among others, for the Texas Shakespeare Festival.

Stephen Lias (Musical Director, Conductor) is a member of the Music faculty at SFA. He has composed music for over 30 professional theatre productions, including nine years with the Texas Shakespeare Festival. He was Musical Director for the SFA productions of *Cabaret* and *Follies*.

Tomy Matthys (Scenic Designer) has taught for 40 years at SFA, where he has designed over 200 productions. His most recent scene designs include *Anton in Show Business*, *The Shadow Box*, *Trudi and the Minstrel*, *Sylvia*, *The Member of the Wedding*, *Harvey*, *Six Characters in Search of an Author*, and *Hair*.

Meaghan Rosenberger (Assistant Stage Manager) is a freshman from S. F. Austin High School in Sugar Land, where she stage managed *Mariner*, *All Out*, and *The Complete History of America, Abridged*. She was on wardrobe crew for *Anton in Show Business*.

Steven H. Shirey (Technical Director) holds a BFA from SFA and an MFA from USC. In addition to being Technical Director since 2001, he has designed scenery for the 2004 Festival of New American Plays and lights for both Mainstage productions and operas at SFA.

Amber Talley (Stage Manager) is a junior from Katy. She stage managed such SFA Mainstages as *Trudi and the Minstrel*, *The Member of the Wedding*, and *Six Characters in Search of an Author*, and was Assistant Stage Manager for *The Man Who Came to Dinner*. Amber has also designed and stage managed for many Downstage productions.

Victoria Thompson (Make-up Designer) has designed make-up for *Anton in Show Business*, *The Shadow Box*, *Trudi and the Minstrel*, *Sylvia*, *The Yellow Boat*, *Quake*, *The Vise*, *Guernica*, and *Extremities*. Tori's acting credits include *The Member of the Wedding*, *Hair*, *Pericles*, *The Land of the Dragon*, and *Bacchae*.

Jessica Tinker (Make-Up Designer) is a junior from Marshall. She was Assistant Stage Manager for *The Seagull* and scenic painter for *The Man Who Came to Dinner*. She was also a member of the Summer Rep company in 2003.

Production Staff

Technical Director	Steven Shirey
Costume Shop Supervisor	Barbara Blackwell
Assistant Stage Managers	Ashley Douglas, Meaghan Rosenberger
Assistant Costume Designer	Sonia Lerner *
Assistant Choreographers	Darrell D. Grant *, Izchel Hernandez
Master Electrician	Jeff Lochmann
Lightboard Operator	Ella Haag
Followspot Operator	Eric Franklin
Soundboard Operator	Rusty Lindsey
Special Effects Crew	Philip Miatech, Paul Reynolds, Matthew Williamson
Floor Crew	Christine Branch, Amanda Chandler, Katie Jones, Sara Jones, Sara Lawson, Joshua Nanninga, Adam Tate
Fly Rail Operators	Chad McElveen, Joel Wright
Paint Crew	Brandie Holliday, Ruth Ramsey, Savannah Seilheimer
Light Hang Crew	Russ Arnett, Krystle Bender, Robert Bills *, Clint Hanna, Aslan Hollier, Sean McDaniel *, Nick Mills, Lou Thompson, James Wetuski
Fabric Painting	Leslie Magdaleno
Fabric Dyeing Crew	Alana Anthony, Deborah Borchers
Wardrobe Masters	Sarah D. Long, Lisa Zdancewicz
Wardrobe Crew	Danielle Constantine, Katie Jones, Sara Lawson, Joshua Nanninga, Stephanie Rhoades, Kevin Scholtes
Makeup Crew	Alana Anthony, Lacey Carnley, Shawna Lynch *, Boni Newberry *, Matthew Oliver
House Manager	Joshua Spence
Ushers	Theatre majors and minors
Programs	Rick Jones, Tim Olivares
Publicity	Sylvia Bierschenk, Office of Arts Information
Box Office Manager	Diane Flynn

Special Thanks & Acknowledgments

Nita Hudson for vocal coaching.

Cover illustration: *Tempest*, painting on silk by Juanita Yoder Kaufmann,
JYKart.com.

**SFA School of
Theatre
Faculty and Staff**

Dr. Richard Berry
Dean, College of Fine Arts

Dr. Clarence W. Bahs
*Professor and Director of
the School of Theatre*

Ms. Angela Bacarisse
Assistant Professor

Ms. Carolyn Conn
Assistant Professor

Dr. Richard Jones
Associate Professor

Mr. Kyle Kennedy
Assistant Professor

Mr. Tomy Matthys
Associate Professor

Dr. Alan Nielsen
Professor

Mr. Allen Oster
Professor

Mr. Jack Heifner
Playwright-in-Residence

Ms. Shari Ellsworth
Lecturer

Ms. Juanita Finkenberg
Adjunct Faculty

Ms. Barbara Blackwell
Costume Shop Supervisor

Mr. Steve Shirey
Scene Shop Supervisor

Ms. Nelda Hartley
Administrative Assistant

**Friends of the Arts
Theatre Division
Theatre Board**

Betty Ann Taylor (Pres.)
Anne & David Norton (VPs)
Stephanie George (Secy./Treas.)
Frances Spruiell (Council Rep)
Stacy Jacob Borders,
Susan Conley, John Hibbard,
John & Molly Hill,
Michael Langford,
Nancy Lemberger, Brad Maule,
Melissa McMillian-Cunningham,
Bo Miller, Gary Pankratz,
David Raines & Dana Henderson,
Linda Renfro, Jodie Stone,
Bill Taylor

**Scholarships
2005-06**

Alumni Scholars

Thomas Brazzle, Justin Cole,
Chad Kinsman,
Natalie Melcher, Erin Orr

Regents Scholars

Sara Boland-Taylor,
Jessee Foudray, Sara Jones,
Meagan Rosenberger

**Departmental and Other
Scholarships**

Justin Bauer, Sara Boland-Taylor,
Jessica Findell, Chris Gamel,
Nashanna Gates, Lauren Glass,
Micah Goodding, Ella Haag,
Xzavien Hollins, Chris Howell,
Sara Jones, Sara Lawson,
Shawna Lynch, Nadaha McCullough,
Mark McManus, Philip Miatech,
Boni Newberry, Jonathan Pate,
Brandon Polanco, Josh Real,
Melissa Recalde,
Meaghan Rosenberger,
Kevin Scholtes, Casey Stephens,
Sable Stubblefield, Adam Tate,
Tori Thompson, Zane Whitney,
Sarah Zabinski

SIFA
School of
STEPHEN F. AUSTIN STATE UNIVERSITY

Theatre

2005-06 Mainstage Season
Faculty-Directed Productions

All performances at 7:30 p.m.

Anton in Show Business

By Jane Martin

October 4-8

The Tempest

by William Shakespeare

November 15-19

The Night of the Iguana

by Tennessee Williams

February 21-25

A Festival of New American Plays

Directed by Jack Heifner

April 25-29

Fall 2005 Downstage Season
Student-Directed Productions

7:30 p.m. Friday; 2:00 and 7:30 p.m. Saturday

Bobby Gould in Hell

by David Mamet

November 4-5

Raised in Captivity

by Nicky Silver

December 2-3

Friends of the Arts, Art, Music and Theatre

Membership Period: January 1 through December 31, 2005

Current to November 1, 2005

Diamond

Mr. and Mrs. Edward Cole
Nacogdoches Memorial
Hospital

Gold

Ann Bradshaw Stokes
Foundation
Nacogdoches Convention and
Visitors Bureau

Silver

3M Investments No. 2 LLC
Elaine Burgess Ashcroft
Richard and Debbie Berry
Ms. Melva Hines
Dr. David Lewis
Ms. Sarah M. Mills
George and Peggy
Schmidbauer
The Drs. Dolamu and Modupe
Sokunbi
Dr. and Mrs. Larry Walker
Wednesday's Child Benefit
Corporation
Mr. and Mrs. Robin Welch
Tom and Peggy Wright

Bronze

David and Eloise Adams
Mrs. Elisabeth Bilan
Dr. Louise Bingham
Dr. and Mrs. Roger L.
Campbell
Dr. Jill Carrington
Citizens 1st Bank
Pat Dolan & Linda Mock
Jack R. Erwin Family
Mrs. Lynn Fisher
Dr. and Mrs. Bill Gandy
Drs. Tito and Lupe Guerrero
Mr. and Mrs. Alan P. Jones
Mr. and Mrs. Robert W.
Kastenmeier
Mrs. Charlotte B. Montgomery
Mike and Barb Stump
Dr. Nancy Wisely

Sponsor

Mrs. Frances S. Adams
Mr. Fred J. Allen
Dee and James Allums
Andrews and Andrews,
Attorneys at Law
Mr. and Mrs. Jeff Badders
Dr. and Mrs. Arthur Benoy
Ed and Marsha Blount
Ms. Shelley Brophy
Ms. R. Yvette Clark
Lee and Susan Danis
Richard and Lucille DeWitt
Gound Chevrolet Company
Tito and Lupe Guerrero
Durward and Mary Henry
Jesse and Holli Jones
Robert Kinsell and Judy
Morgan-Kinsell
Mrs. Robert Kline
Mr. and Mrs. Jerry Moore
Max and Carolyn Morley
Bill and Sue Parsons

Mr. and Mrs. James Perkins
Mr. and Mrs. David Prince
Barbara and Richard Pulaski
Wayne and Mary Ann Slagle
Mr. and Mrs. Douglas V.
Smith
Mrs. Jean Stephens
Ms. Stephanie Stephens
Mrs. Kimberly Stockseth
Joyce and Doug Swearingen
Mrs. Margie Tipton
The Rev. Doug and Cheryl
Tucker
Mike White and Shannon
Smith
Gayle D. Wyatt

Patron

Elizabeth Akamatsu and
Piero Fenci
Ron and Bobbie Ann
Anderson
Mrs. Barbara Arwood
Mrs. Marianne M. Ashy-
Davis
Dr. and Mrs. Clarence Bahs
Ms. Sharon Bailey
Mr. Roger P. Bartel
Mr. Mike Bay
Mr. and Mrs. Al Bem
Mrs. Kathi Berridge
Rich and Charlotte Bock
Mr. James Terry Bourdier
Mr. and Mrs. Marc C.
Bridgman
Mr. and Mrs. Gary L. Brittain
Mr. and Mrs. H. J. Brunotte
Ms. Susan Bryan
Roland and Claire Bunge
Betty F. Burr
Mr. George Campbell
Mr. Brent C. Cannon
Earl and Christine Carter
Castleberry, Barham &
Heard Insurance
Ms. Caroline Suzanne
Chandler
Dr. Robert L. Clifford
Mr. Tim Connolly In Honor
of Trevor Connolly
Mr. and Mrs. Tommy
Cordova
Mr. and Mrs. Alfred
Danheim
John and Doris Daniel
Mr. and Mrs. Lee Danis
Daughters of the American
Revolution
Mr. Robin Dawley
Mr. and Mrs. Donald K. Day
Dr. and Mrs. John P. Decker
Mrs. Nancy Delaney
Mr. and Mrs. Robert
Delgado
Mr. and Mrs. Skipper M.
Drost
Mr. and Mrs. O'Neal
Dubberly
Mr. and Mrs. Tracy L. Estelle
Fairbanks Title Agency, Inc.
Dr. and Mrs. Ivan Filippo

Mel and Juanita Finkenberg
Todd and Any Fish
Ms. Anna Fleckenstein
Mr. Gary Q. Fields
Barton and Masako Gaskin
Mr. and Mrs. Lupe Gonzales
Dr. John W. Goodall
Mrs. Bettie Griffin
Ms. Laura L. Guthrie
Jerry and Toni Hale
Mr. Larry Harkness
Ms. Sheila Henderson
Mrs. Melva Hines
Dr. and Mrs. Jack W.
Hudgins
Louise Jacks
Mr. and Mrs. Jim Jenkins
Mrs. Jerry K. (Joan) Johnson
Mr. and Mrs. Robert C
Kindel
Carolyn King
Mr. and Mrs. Ray Klodzinski
Dr. Forrest T. Kroschel
Mr. and Mrs. Robert John
Kruger
Mr. and Mrs. Jerry M.
Lancaster
March of Dimes
Dr. and Mrs. Travis Mast
Mr. and Mrs. Gary Matocha
Jan and Catherine McDaniel
Dr. Darrel and J.P.
McDonald
David and Debra McKinney
Mr. and Mrs. Joseph E.
Miller
Mr. William Miller
Mel and Virginia
Montgomery
Dr. and Mrs. John T. Moore
Milton and Lila Moorer
Andrew and Kim Mytelka
Nacogdoches ISD
Mr. Les Neal
Dr. and Mrs. John R. Pack
Gary L. Pankratz
Ms. Gretchen Patterson
Mr. Asa Peavy
Mr. and Mrs. Robert C.
Pfullmann
Ms. Kathleen Phillips
Mr. and Mrs. Mark Powell
Mrs. Sheri W. Prejean
Kathryn and Randy Price
Leon and Debbie Ray
Ms. Cassandra Redd
Mr. Donald Richter
Dr. F. Barry Roberts
Dr. Patricia Read Russell
Justin Dominic Ryan
Mr. and Mrs. Robert John
Sabol, Jr.
Mr. and Mrs. Thornton
Savage
Mr. and Mrs. H. J.
Schexnayder, Jr.
Mr. and Mrs. Tom Schwab
Mr. James E. Seale
Mr. and Mrs. Val Sharp
Mrs. Cindy L. Silberman
Leon and Sue Smith

Thomas and April Lynn
Smith
Tip and Nanny Smith
Mrs. Agnes W. Sparks
Mr. and Mrs. Roger Sparks
Mr. Mark C. Spurlock
Dr. Jack and Rebecca Stanly
Mr. and Mrs. Bruce A.
Stevenson
Mr. and Mrs. Thomas
Thompson
Orville Todd
Ms. Karen Michelle Towle
Tyler County Art League
Compass
Gerard and Carrie Ventura
Ms. Linda Sue Wallace
Dr. and Mrs. Arthur C.
Watson, Jr.
Mr. Robert Conrad West and
Mrs. Holly Foye-West
Ms. Wyndell Westmoreland
Mr. and Mrs. Norman M.
Wigington
Billy and Carol Willis
Mr. and Mrs. Thomas D.
Wright
Mr. and Mrs. Richard Young

Contributor

Mr. and Mrs. Mike Aikin
Mr. Joseph D. Alford
Ms. Jami Arnst
Carol Athey
Ms. Veida Axley
Mr. and Mrs. Tim Baggett
Dr. and Mrs. Bruce Bailey
Dr. Rebecca Bailey
Dr. and Mrs. Flamen Ball
Scott and Susan Bartos
Dr. Claudia Beach
Mr. Roland Hugh Bear
Mr. and Mrs. Gary L. Beard
Mr. and Mrs. Miguel Blanco
Mrs. N. G. Bright
Ms. Jackie L. Byler
Dean and Theresa Cable
Mr. and Mrs. Fred Chandler
Mr. Ben Cooper
Mr. and Mrs. Mark D.
Cooper
Mr. and Mrs. Daniel Cotten
Campbell and Peggy Cox
Ms. Leilabeth W. Crispin
J. Kelly Cunningham and
Melissa McMillian-
Cunningham
Dr. Deborah Dalton
Ms. Katherine T. Davis
Ms. Marilyn Davis
Mr. and Mrs. W. I. Davis, Jr.
Dr. and Mrs. Harry D.
Dawson
Alicia and Richard Deupree
East Texas Appraisal
Services
Mr. and Mrs. Mike Emmert
Ms. Christie Ferraraccio
Judson J. and Carol W. Fisk
Mr. Clarence Fogelstrom
Mrs. Jean Gore

**Friends of the Arts, Art,
Music and Theatre (continued)**

Mr. and Mrs. Sam Hattman
Mr. and Mrs. Guy Hicks
Mr. and Mrs. John R. Hicks
Mr. Lawrence Horton
Mr. Howard Horton
Dr. and Mrs. Neal Houston
Mr. and Mrs. Charles Hukill
Dr. and Mrs. Oren C. Irion
Mr. and Mrs. Brandon R.
Johns
Charles and Corinne Jones
Lisa Rice Jones
Mr. and Mrs. Reese
Kennedy
Mrs. Rebecca G. (Stanly)
King
Mr. and Mrs. Ray
Klodzinski
Mr. Steven Kullback
Mrs. Carolyn Lacy
Mr. Don Lawler
Mr. David C. Lawson
Valroy and Adelia Kaye
Maudlin
Mr. Michael S. Mauer
Mrs. Deborah McCratic
Mrs. Tom and Sylvia
McGrath
Mr. and Mrs. George
McKinney
Mrs. Sarah McMullan
Mr. and Mrs. Phillip
Medford
Mrs. Otilie Milliken
Mr. and Mrs. Edgar Mirabal
Mrs. Karen Mobbs
Roland and Jean Muckleroy
Mrs. Cynthia Nussenblatt
The Old South Garden Club
Mr. and Mrs. Michael E.
Olivares
Mr. and Mrs. Edward
Paschall
Carissa A. Poe
Ms. Charlotte Jo Pruitt
Mr. and Mrs. Keith Reed
Joan and Allen Richman
Mr. and Mrs. Curtis
Rickman
Mr. and Mrs. Ray Rinker
Dr. and Mrs. Sid Roberts
Mr. and Mrs. Eugene
Rolston
Val and Suzanne Rose
Mr. Brent Roycroft
Mr. and Mrs. John Ruckel
David and Michelle Sandoz
Mrs. Carol Denise Scandel
Ms. Wanda C. Schenk
Ms. Deborah L. Schroeder
Mr. and Mrs. Ronald L.
Sedtal
Dr. and Mrs. Vyrne Shofner
Mr. Bradley Ryan Smith
Mr. and Mrs. Sidney R.
Smith
Ms. Betty Ann Taylor
Ms. Colleen Terrell
Mrs. Nancy Terry
Mr. and Mrs. Tim Tindell
Mr. and Mrs. Jerry D.
Vickery

Mr. and Mrs. Richard
Wallace
Warren and Sandy Wallace
Mr. and Mrs. Floyd (Dock)
Watson
Mr. Steven Watson
Ms. Joselyn Winter
Mr. Kurt E. Zecchin

Member

Mr. Christian Cole
Mrs. Charles Grimland
Mrs. Marie Hargrove
Ms. E. A. Keller
Mrs. Lucille Kennedy
George and Sarah Alice
Millard
Mrs. Mildred Murphy
Catherine and William
Niggli
David O'Neill
Mr. and Mrs. Buddy Ryan
Mr. and Mrs. Robert W.
Schmitz
Mrs. Mary Jo Schnorbus
Mr. and Mrs. Mark Surman
Mrs. Mary Alice Thompson
Ms. Ellen L. Thomas-
Armstrong
Mrs. Judith D. Williamson
Carol Marie Wilson
Ms. Linda Zakrzewski

**Friends of the Arts,
University Series**

Membership Period:

September 1, 2005, through August 31, 2006
Current to November 1, 2005

Impresario

Stephen F. Austin State
University

Producer

The Daily Sentinel

Director

BancorpSouth Fredonia
Citizens 1st Bank
Commercial Bank of Texas
Glaucoma Consultants of
East Texas
Lehmann Eye Center
Nacogdoches Medical Center
Hospital
Regions Bank Stone Fort
Tipton Ford-Lincoln-
Mercury, Inc.

Designer

A. G. Edwards & Sons, Inc.,
Shannon Smith
Mr. and Mrs. Jeff Badders
First Bank and Trust
FrameSaver of Nacogdoches
Gound Chevrolet Company
Tito and Lupe Guerrero
Kennedy's Jewelers
Nacogdoches Memorial
Hospital
SFA Alumni Association
SFA Foundation
Timber Springs at SFA
Tom and Peggy Wright

Artist

Austin Bank of Nacogdoches
Betty F. Burr
Fredonia Hotel and
Convention Center
Huntington State Bank
Joe Max Green Insurance
Concepts
Mize Department Store
Michael Mollot, M.D.
R & K Distributors, Inc.
The UPS Store
Tom and Peggy Wright
Wendy Wyatt Buchanan,
Edward Jones Investments

Guarantor

Ambiance
Mr. and Mrs. Edward Cole
Curtis & Clark Engineering,
LLC
Dr. and Mrs. Robert Z. Eanes
Excel Car Wash, Inc.
Grogan Clean Care
House of Versailles
Perfumery
McKnight Financial Services
Mr. and Mrs. James H.
Moore
Nacogdoches Eye Associates

Nacogdoches
Gastroenterology
Ray Johnston Counseling
Services
Dr. F. Barry Roberts
Triad Office Solutions
University Rental, Elder
Enterprises
The Varsity Book Store
Xerographix East Texas

Sustainer

Elaine Burgess Ashcroft
Mrs. Elisabeth Bilan
Dr. Louise Bingham
Dr. Mary Cullinan
Fern Faulkner
Mel and Juanita Finkenberg
Durward and Mary Henry
Bob and Joan Lawson
Mr. and Mrs. Dale Litton
Mrs. Theresa Reeves
LTC Ben J. Sultenfuss

Supporter

John F. Anderson and Ann
Doyle-Anderson
Anonymous
Dr. and Mrs. Stewart Barron
Philip and Mitzi Blackburn
Mr. and Mrs. Jack A.
Bumell
Dr. Sue Butts
Mrs. Kent Castle
John and Doris Daniel
Dr. and Mrs. John P. Decker
George and Patricia Fitch
George and Deanne Franks
Ms. Deborah K. Garrett
Ms. Jayne Garrison
Dr. and Mrs. Malcolm
Graham
Mildred Hancock
Mr. and Mrs. Alvin J. Hejl
Dr. June Irwin
Mrs. Gary Konrad and
Catherine Albers
Mrs. Ted and Janice Ledet
Ms. Jeanette Milstead
Roland and Jean Muckleroy
Dr. and Mrs. Jack Nelson
Jimmy and Peggy Partin
Carolyn M. Price
Peggy Price
Don Richter
Dr. Patricia Read Russell
Ms. Mary Grace Simms
Russell and Trish Smith
Sue and Leon Smith
Dr. and Mrs. Jack Stanly
Jodie Stone in memory of
Charlene Manley
Bob and Shirley Szafran
Gerard and Carrie Ventura
Dr. and Mrs. Arthur C.
Watson, Jr.



Chevy Colorado Crew Cab

GOUND CHEVROLET

MARK OF EXCELLENCE AWARD WINNER

Serving Nacogdoches since 1953

*Our Commitment:
To give our customers the best in
Sales and Service*



UNIVERSITY SERIES

Dean, College of Fine Arts	Richard Berry
Programming and Development	John W. Goodall
SFA Gallery	Shannon Bailey
Arts Information	Sylvia Bierschenk
Box Office and Audience Services	Diane J. Flynn
Facilities Manager	Steven Shirey
House Manager	Joshua Alan Spence
Ushers	Phi Mu Alpha Sinfonia

FOR YOUR INFORMATION

Tickets

Charge tickets conveniently by phone. Visa, Mastercard, American Express and Discover are accepted. Normal box office hours are weekdays 8 am to 5 pm. On performance dates, the Box Office is open 8 am to performance time on weekdays and one hour prior to performance time on Saturdays and Sundays. The Box Office is located in Room 211B in the Griffith Fine Arts Building. Programs on the University Series are not recommended for children under five years of age. Each member of the audience must have a ticket regardless of age.

Late seating

In fairness to those already seated, patrons who have the misfortune to arrive late will be seated near the rear of the auditorium during an appropriate break in the performance.

Parking

Parking in front of the Griffith Fine Arts Building is available to those patrons who join the FRIENDS OF THE ARTS UNIVERSITY SERIES at the SUPPORTER Level. Parking in other campus areas is available. We recommend Vista Dr., the parking garage off Griffith Blvd. south of the University Center, the lot behind the University Police Department off of East College St. and the lot on the corner of North St. and Wetternark. Please allow ample time for your arrival.

Persons with disabilities

Persons with disabilities are requested to reserve seats as soon as possible to request special assistance or accommodations needed for participation in events. Parking is provided in front of the Griffith Fine Arts Building on Alumni Drive. The elevator is located in the East Tower (campus side). Locations for wheelchair seating are available on the first floor of the W. M. Turner Auditorium. Program booklets in large type are available for visually impaired persons. Please call the Box Office at least two days in advance of the event and a copy will be held for you.

Rest Rooms

Rest rooms and drinking fountains are located in the lobby adjacent to the auditorium on the first level and in the hallway outside the balcony.

Telephone

A public telephone is located in the East Tower, main level, next to the elevator.

Food, beverages and smoking

Please do not take food or drinks into the auditorium. The use of tobacco products is not permitted in the Griffith Fine Arts Building.

Cameras, paging devices, cell phones and other electronic devices

Please deactivate all electronic devices before entering the auditorium. Patrons may also check them with our ushers prior to entering the auditorium so they may be guarded by the House Manager. Patrons who expect to be on call while attending a performance are requested to leave their names and seat locations with the House Manager. You will be contacted immediately and discreetly when called. Cameras and recording devices are not permitted in the auditorium.

Ticket Exchange Policies

Season Ticket patrons may exchange tickets until two business days prior to the event. We regret there can be no refunds. All sales are final.

View our complete ticket exchange policy online at www.finearts.sfasu.edu or stop by the Box Office to receive a printed copy.

Mailing lists

To receive information about future attractions in the College of Fine Arts, please complete a mailing list card available at the Box Office or call 468-6407.

Lost and found

Patrons who lose articles while attending an event may make inquiries with the House Manager or call the Box Office during regular office hours.

To contact us, call:

Dean, College of Fine Arts	468-2801
Programming and Development	468-1303
Arts Information	468-5820
Box Office	468-6407
or toll free	(888) 240-ARTS

Saluting the performing and visual arts

Stephen F. Austin State University



Free checking Full-service Saturday banking
Home and auto loans Online banking
MasterMoney debit card Trust & investment services



Big enough to serve. Small enough to care.

1009 N. University Drive • (936) 559-5100

www.fbtet.com



Member
FDIC

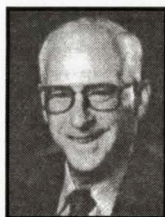
Cleveland • Diboll • Hemphill • Jasper • Kirbyville • Lufkin
Nacogdoches • Pineland • San Augustine • Splendora

**Curtis & Clark
Engineering, LLC**

Nacogdoches, Texas
564-5356



HELPING YOU
UNDERSTAND
AND BENEFIT
FROM
DEREGULATION



MICHAEL MOLLOT, M.D.

Specializing in
STOMACH & COLON DISORDERS
Endoscopy • Liver Disease • Colon
569-6449



Two Locations
1225 N. Mound & 619 Russell Blvd.

COLON CANCER
DETECTED

*We Proudly Support
The Performing and Visual Arts
at
Stephen F. Austin State University*

**RESPONSIBILITY
MATTERS™**



ANHEUSER-BUSCH, INC.

Budweiser
KING OF BEERS.

R & K Distributors, Inc.

You might not be able to do everything at once, you can however do it all in one place.



Let us help you with that.

The UPS Store™

Shipping Services

Packaging Services

Mailbox & Postal Services

Copying Services

Finishing & Printing Services



The UPS Store #3855
3205 N. University Ste #D
Nacogdoches, TX 75965

(Across from the Post Office)

Tel: (936)559-5614

Fax: (936)559-0434

Email:

store3855@theupsstore.com

Jodie Stone, Owner

©2003 United Parcel Service of America, Inc.



Another Round of Applause for the

SFA University Series!

Citizens 1st BANK

3010 University Dr. • 936-560-1401 • www.citizens1stbank.com



Your Community.
Your Paper.



The Daily Sentinel

For subscription or advertising
information call

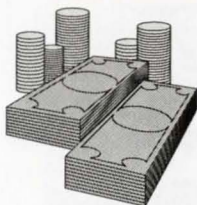
564-8361

www.dailysentinel.com

AMBIANCE

Home Furnishings - Gifts - Interior Design

303 North Street | Nacogdoches | 564-4906



McKnight Financial Services

*Retirement • Investments • Life Insurance
Long-Term Care • Health Insurance*

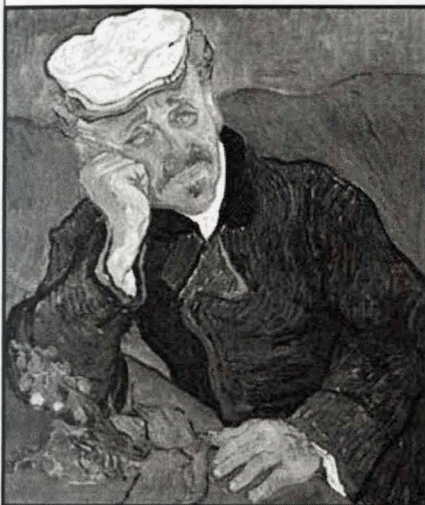
Financial Planning that meets your needs.

Bob McKnight
Roger McKnight
Phone: (936) 564-2307

Wes McKnight



McKnight Financial
Services



**THIS PAINTING WAS ONCE
AUCTIONED FOR OVER
\$85 MILLION DOLLARS TO AN
ENTHUSIASTIC COLLECTOR.**

**HE MUST HAVE HAD
OVERDRAFT PRIVILEGE.**

**FREE CHECKING WITH OVERDRAFT PRIVILEGE
FROM HUNTINGTON STATE BANK.**

**JUST ONE OF THE MANY PRODUCTS OFFERED TO
HELP YOU ENJOY THE FINER THINGS IN LIFE.**

(other charges may apply)

4822 NORTH ST. | 462.8800 | WWW.HUNTINGTONSTATEBANK.COM

COME GROW WITH US!



Member FDIC

Coming soon

Timber Springs

at SFA

A Premier Retirement Campus



*A lifestyle of grace and beauty
A lifestyle of art and learning
A lifestyle of freedom and enjoyment
The Timber Springs at SFA Lifestyle*

Call to reserve your place today!
1.800.940.0411

East Texas' only university-affiliated retirement campus! *Timber Springs* at SFA is proud to support The University Series 2005-2006 Season.



The Fredonia

Hotel and Convention Center

(936) 564-1234

Email: reservations@fredoniahotel.com

See us at: www.fredoniahotel.com

200 North Fredonia Street • Nacogdoches, Texas 75961

We support
fine arts
in East Texas

**Austin
Bank**
Member FDIC

www.austinbank.com

3120 North Street
Nacogdoches, TX
(936) 559-5500

drama on...
an exciting...
theater...

Grogan Clean Care

24-HOUR EMERGENCY SERVICE

Carpet Cleaning Certified Operators
Oriental Rugs - Hand Washed

Keith and Pat Grogan, Owners 1406 East Starr 564-5722

XEROGRAPHIX

EAST TEXAS

PROMPT LOCAL SERVICE

Xerox products to meet every need and every budget

- Color Copiers
- Digital Solutions
- Fax Machines
- Laser Printers



424 North Street • Nacogdoches, TX • 936-569-1992



NACOGDOCHES EYE ASSOCIATES

Since 1925

Eyecare for those who know the difference

3208 N. University Drive, Suites B & C
Nacogdoches
564-7661 or 564-EYES

Mark Lanier, O.D.
Therapeutic Optometrist

Ashley Risner, O.D.
Therapeutic Optometrist
and Low Vision Consultant

The House of Versailles

Paris  Perfumery & Gifts



Christy Rogers
Owner

280 Ladies' Perfumes • 80 Men's Colognes
Gels, Powders, Lotions & Soaps
Crabtree & Evelyn® Burt's Bees®
Circle E® • Votivo® • Jewelry & Gifts

936-569-1818 • M-F 10-6 • Sat. 10-4 • 404 E. Main, Nacogdoches

NOW PLAYING

And Baby Makes Three

Directed by:



Sheila Hill, M.D. Kim Schaus, M.D.

*After 9 Months of Waiting!
Don't Miss the Dramatic Debut!*

THE CAST

(In order of appearance)

The Mom Mom
The Dad Dad
Doctors..... Dr. Sheila Hill
 Dr. Kim Schaus
The Baby.....Baby

THE SETTING

This new and exciting play takes place in a custom-made labor and delivery suite at Nacogdoches Memorial Hospital. Providing the ultimate in comfort and privacy, they deliver a complete bundle of services individually packaged for each expecting family.



NACOGDOCHES
Memorial Hospital

1204 MOUND ST. • 936-564-4611
PHYSICIAN REFERRAL 569-7777

www.nacmem.org

*2005-2006
College of Fine Arts
Season Sponsor*



ROLEX



OYSTER PERPETUAL DATEJUST AND LADY-DATEJUST

Kennedy's
JEWELERS

201 East Main
Nacogdoches
(936) 564-7671, Fax (936) 564-2650