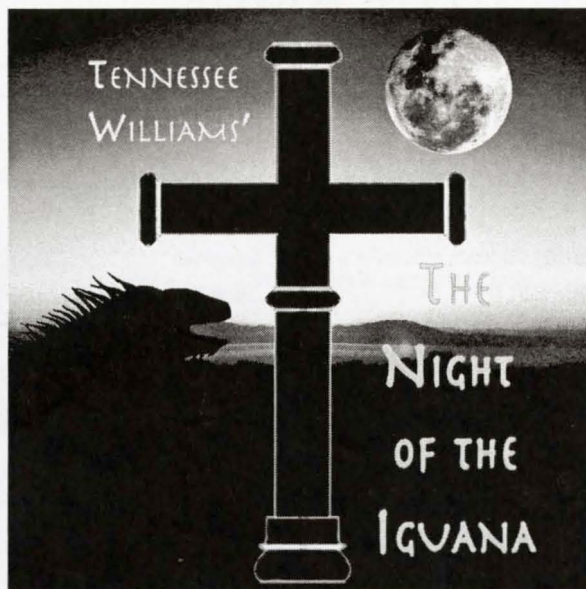


2005-2006 UNIVERSITY SERIES
THE HOTTEST TICKET IN TOWN!

Stephen F. Austin State University
College of Fine Arts and
School of Theatre present



Produced by

SFA
School of Theatre
STEPHEN F. AUSTIN STATE UNIVERSITY

Feb. 21-25, 2006

7:30 p.m.

W.M. Turner Auditorium

Sponsored in part by



MAKE THE ROAD
YOUR CANVAS.

THE DRIVE,
YOUR WORK OF ART.

2006 LINCOLN NAVIGATOR



1115 NORTH ST. | NACOGDOCHES
1-888-4TIPTON | WWW.TIPTONFORD.COM

The University Series

2005-2006 The Hottest Ticket in Town!

The Art Center and Griffith Gallery are open Tuesday through Sunday, 12:30-5 p.m.
All performances at 7:30 p.m.

- September 9 - October 16 *SFA Faculty Exhibition*
The Art Center
- September 16 - October 16 *Barry Anderson: Epic Escapism & Suspension*
Griffith Gallery and School of Art Gallery
- October 15 *Stars and Stripes Forever: A Patriotic Review*
featuring the SFA A Cappella Choir W. M. Turner Auditorium
- October 27 *Betty Buckley: Deep in the Heart*
W. M. Turner Auditorium
- November 15 -19 *The Tempest* by William Shakespeare
an SFA School of Theatre Production W. M. Turner Auditorium
- November 29 *The Salzburg Marionettes*
presenting *The Magic Flute* by W. A. Mozart W. M. Turner Auditorium
- January 31 *Ballet Hispanico*
W. M. Turner Auditorium
- February 8 - March 26 *In the Path of the Blaue Reiter*
German Expressionist Portfolios, Prints and Books Griffith Gallery
- February 21 - 25 *The Night of the Iguana* by Tennessee Williams
an SFA School of Theatre Production W. M. Turner Auditorium
- March 6 *Salzburg Chamber Soloists with Pianist Andreas Klein*
W. M. Turner Auditorium
- March 23 *Los Hombres Calientes*
W. M. Turner Auditorium
- April 6 - 8 *SFA Opera - La Périchole*
an SFA School of Music and School of Theatre Production W. M. Turner Auditorium
- April 7 - May 5 *Paul Brach: 1985-2005*
Griffith Gallery

For information, call (936) 468-6407 or 1 (888) 240-ARTS



SFA ALUMNI FOUNDATION

Fine Arts Scholarships

Representing nearly \$860,000
that annually benefit students
in the College of Fine Arts

Kermit & Margaret Agee Scholarship
Elsie Arscott Scholarship
Bridges/McKinney Scholarship
Perry & Martha Brittain Scholarship
Zack Brittain Scholarship
Paul Buskirk Memorial Scholarship
Zelma Childers Award
Wanda Cochran Scholarship
Ed & Gwen Cole Theatre Scholarship
J.T. Cox Scholarship
Melba Cranford Scholarship
John & Doris Daniel Scholarship
John Dickson Scholarship
E. Diane Ford Scholarship
Diane, Casey, and Court Fouts Scholarship
H.H. & Bertha Gibson Scholarship
W.H. & Bennie Atkinson Gray Scholarship
Emily Hargraves Scholarship
Charles Lee Hill Scholarship
Doris & James Jones Scholarship

James G. & Doris Jones Scholarship
Brian LaBarbera Memorial Scholarship
Lenville Martin Award
Pat Roberdeau Mast Scholarship
Brad Maule Award
Sandy McGrath Scholarship
Mamie Middlebrook Scholarship
Mel Montgomery Scholarship
Ida Pritchett Scholarship
Mary Osborne Ray Scholarship
Karl Schlicher Award
Barbara Schoenewolf Scholarship
SFA Theatre Scholarship
Simpson/Miller Scholarship
Aaron & Barbara Smith Scholarship
William M. Turner Scholarship
Jimmie Hudgins Twirl-o-Jack Scholarship
Stephen Weeks Scholarship
Anonymous Scholarship



SFA Alumni Association
www.sfaalumni.com

SFA Alumni Association

PO Box 6096-SFA Station • Nacogdoches, TX 75962

Toll Free: (800) 765-1534 • Ph: (936) 468-3407 • Fax: (936) 468-1007
alumni@sfasu.edu • www.sfaalumni.com

Like Diamonds, Endowments are Forever.

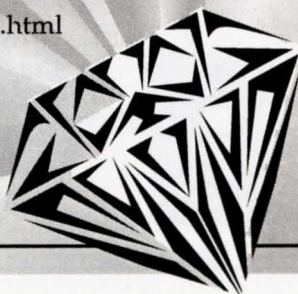
The SFASU Foundation manages more than \$9 million in permanent endowments that support SFA, its students and programs.

Many of these endowments support the College of Fine Arts at SFA. If you would like to make a difference during your lifetime and beyond, establish an endowment today.

For more information and details regarding endowments, please contact Jerry Holbert, Executive Director.

STEPHEN F. AUSTIN STATE UNIVERSITY FOUNDATION, INC.

P.O. Box 6092, SFA Station
Nacogdoches, Texas 75962
(936) 468-5406
www.givetosfa.sfasu.edu/create.html



*"High station
in life is earned by the gallantry
with which appalling experiences
are survived with grace."*

- Tennessee Williams



GLAUCOMA CONSULTANTS OF EAST TEXAS



Shannon L. Smith, M.D., F.A.C.S.

*Diplomate, American Board of Ophthalmology
Fellowship Trained in Glaucoma*

3000 A N. University Drive Nacogdoches
936-564-3600 or Toll Free 1-877-810-3937

www.eyesoftexas.us



DEAR FRIENDS OF THE ARTS,

I WOULD LIKE TO WELCOME YOU TO ANOTHER FINE PERFORMANCE AT THE STEPHEN F. AUSTIN STATE UNIVERSITY COLLEGE OF FINE ARTS.

TIPTON FORD-LINCOLN-MERCURY IS VERY PROUD TO PLAY A PART IN BRINGING THE BEST THE FINE ARTS HAS TO OFFER RIGHT HERE TO OUR HOMETOWN. SO SIT BACK, RELAX AND ENJOY THE SHOW.

SINCERELY,

A handwritten signature in black ink, appearing to read "Neal Slaten". The signature is fluid and cursive, written over a light background.

NEAL SLATEN
PRESIDENT



1115 NORTH ST. | NACOGDOCHES
1-888-4TIPTON | WWW.TIPTONFORD.COM

TENTS • WEDDINGS • PARTIES • TOOLS

UNIVERSITY RENTAL

Try our chocolate fountain!

560-0800

JIM ELDER, OWNER

732 N. UNIVERSITY



EXCEL

CAR WASH, INC.

Excel Car Wash & Valvoline Express Care

4101 North Street, Nacogdoches

560-1453

Valvoline Express Care

1620 South Street, Nacogdoches

560-3457

Valvoline Express Care

2601 North Street, Nacogdoches

552-7279

SIMPLE PEACE OF MIND.

JMG / iC

JOE MAX GREEN INSURANCE CONCEPTS

564-0221

3310 N. UNIVERSITY



**OFFICE
SOLUTIONS**

Computer Networks

Digital Copiers

Intergrated Fax

Supplies

Phone: 560-6500

RAY JOHNSTON, L.C.S.W. - A.C.P.
Counseling Services

- Individual, Family, Marital & Divorce;
Children, Adolescents
- Depression, Stress/Work/School and
Relationship Issues
- Alcohol and Drug Problems
- Most insurance accepted including
Medicare, Medicaid, BCBS,
CHAMPUS/Tricare
- Negotiable Rates
- Close to SFA Campus

24 hours - 569-8570
fax: 560-1144

Our reputation speaks for itself.

Bernhold Auerbach
Music

washes away from the soul
the dust of everyday life."



Edward Jones[®]

Serving Individual Investors Since 1871

Wendy Wyatt Buchanan, AAMS

424 East Main, Nacogdoches, TX
936-564-2327 • 1-800-801-2327

In celebration of Mozart's 250th birthday,
the Stephen F. Austin State University College of Fine Arts presents

Salzburg Chamber Soloists

featuring **Andreas Klein**

performing *Mozart's Piano Concerto KV 415*



Monday, March 6, 2006

7:30 p.m.

W. M. Turner Auditorium

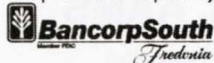
Tickets: \$7.50 - \$30

as part of the 05-06

University Series

THE HOTTEST TICKET IN TOWN

Sponsored in part by



For more information or tickets,
call (936) 468-6407 or (888) 240-ARTS
or visit www.finearts.sfasu.edu

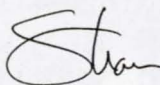


A WEALTH OF INSIGHT

The trusted advice you need for financial success.

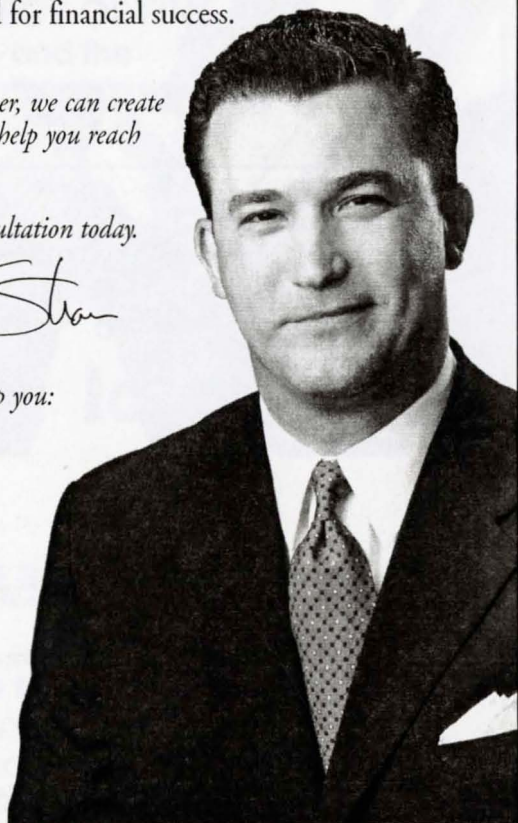
Hi, I'm Shannon Smith. Together, we can create a comprehensive plan that will help you reach your goals.

Call me for your financial consultation today.



We can develop strategies to help you:

- Create Wealth.
- Preserve Wealth.
- Manage Wealth.
- Distribute Wealth.



SHANNON SMITH

560-3930

shannon.smith@agedwards.com
2610 N. University Drive



EDWARDSSM

FULLY INVESTED IN OUR CLIENTSSM

A.G. Edwards & Sons, Inc. | Member SIPC



*If art is that which causes
thought or emotion,*

*then the gift of a child is
the greatest art.*

 **CBTx**

Commercial Bank of Texas, N.A.

*Enthusiastic admirer of
artists and their future.*

Member FDIC

**SFA SCHOOL OF THEATRE
THE COLLEGE OF FINE ARTS**
and the
THE UNIVERSITY SERIES
present

THE NIGHT OF THE IGUANA

BY TENNESSEE WILLIAMS

DIRECTED BY ALLEN OSTER

SCENIC DESIGN BY TOMY MATTHYS
COSTUME DESIGN BY ANGELA BACARISSE
LIGHTING & SOUND DESIGN BY CC CONN
MAKEUP DESIGN BY DARRELL D. GRANT
HAIR DESIGN BY MATTHEW REEVES OLIVER
STAGE COMBAT BY JUANITA FINKENBERG
STAGE MANAGER: CHRIS FLORES *
ASSISTANT DIRECTOR: C. DEXTER KINSMAN *
DRAMATURG: CATHERINE ANN RESTIVO

FEBRUARY 21-25, 2006

7:30 P.M.

W.M. TURNER AUDITORIUM

ABOUT THE CAST

Jessee Foudray (Hilda), a sophomore from Waller, appeared in the SFA Mainstage production of *The Tempest*. She also won the 2003 Houston Young Playwrights Exchange for her play *Trapped in Bagland*, which was performed at the Alley Theatre.

Christopher J. Gamel (Pedro) is a sophomore from Sugar Land. He was in the Mainstage productions of *The Tempest*, *Trudi and the Minstrel*, *The Shadow Box*, and *Hair*. Chris also appeared in the 2005 Original Cast.

Jessica Harkness (Miss Judith Fellowes), a junior from Orange, acted in the SFA productions of *Six Characters in Search of an Author*, *Private Eyes* and *Marred Bliss*. She is a Theatre major with an English minor.

Chris Howell (Rev. T. Lawrence Shannon) appeared in *Bobby Gould in Hell* at SFA last fall. He was also in *Of Mice and Men* and *Reefer Madness* at Angelina College, *Rapunzel* in Cincinnati, OH, and *The Man Who Came to Dinner* in Coldwater, MI.

Chris Kennedy (Understudy Shannon), a senior, has acted in *The Tempest*, *Sylvia*, *Harvey*, *The Seagull*, and the 2005 Original Cast. He was Assistant Director for *Anton in Show Business*. Chris can also be seen in *China Dolls* this semester.

Sean Tyler McDaniel (Nonno) has appeared in *Trudi and the Minstrel*, *Hair*, *The Man Who Came to Dinner*, *Raised in Captivity*, *Private Wars*, and *Guernica*. Sean directed *Welcome to the Moon* and will be directing *Goodbye Oscar* later this semester.

Chad McElveen (Wolfgang) is a freshman from Lufkin, where his credits at Lufkin High School include *A Midsummer Night's Dream*, *You're a Good Man, Charlie Brown*, and *Play It Again, Sam*. At SFA he was on the crew for *The Tempest*.

Robert "Chewy" Minshew (Hank) is a junior whose credits include *The Shadow Box* at SFA and *Of Mice and Men*, *Division Street*, and *Into the Woods* at Angelina College. Chewy also assistant directed the Angelina production of *Clown's Play*.

ABOUT THE CAST (CONTINUED)

Tim Olivares (Pancho) is a sophomore from San Antonio. His Mainstage credits include *The Tempest* and *Hair*. Tim also appeared in *Three Days of Rain*, *Reverse Transcription*, and the 2005 Original Cast.

Courtney Outlaw (Frau Fahrenkopf), a sophomore from Hico, has appeared at SFA in *Anton in Show Business* and *Raised in Captivity*. Her crew credits include *Hair*, *Six Characters in Search of an Author*, *The Yellow Boat*, and *Shooting Simone*.

Nathaniel Reid (Herr Fahrenkopf) is a freshman from Austin. He acted in *Charley's Aunt* and *The Marriage of Figaro* at Sam Bass Community Theatre. He was on the running crew for the Downstage production of *Raised in Captivity*.

Cassidy C. Risien (Understudy Maxine) is a sophomore from Dripping Springs. She appeared in the Mainstage production of *Anton in Show Business*. Her Downstage credits include *Bobby Gould in Hell* and *The Waste Disposal Unit*.

Savannah Seilheimer (Hannah Jelkes) is a junior from Garland. Her Mainstage credits include *Anton in Show Business* and *Harvey*. She has also worked on crews for *The Tempest* and *The Member of the Wedding*.

Caitlin Stephenson (Maxine Faulk) has acted in England, Houston, and Singapore. She has worked in the Guthrie Theatre, the University of Minnesota's actor training program, and the American Academy of Dramatic Arts in New York City.

Jeffrey Stirl (Jake Latta) is a graduate student in Secondary Education; he teaches Theatre at San Augustine Intermediate School. His acting credits include roles at Northeast Texas Community College and Texas A&M - Commerce.

Victoria Thompson (Charlotte) acted in *The Member of the Wedding*, *Hair*, *Pericles*, *Bacchae*, *The Land of the Dragon*, and *Raised in Captivity*. She assistant directed *Harvey* and designed makeup for many Mainstage, Summer Rep, and Downstage shows.

ABOUT THE ARTISTIC STAFF

Angela Bacarisse (Costume Designer) has designed over 200 productions in academic and professional theatres across the country. Her most recent SFA costume designs include *The Tempest*, *Anton in Show Business*, *The Shadow Box*, *Trudi and the Minstrel*, and *Sylvia*.

Barbara Blackwell (Costume Shop Supervisor) designed costumes for *The Member of the Wedding*, co-designed *Trudi and the Minstrel*, and was Costume Illustrator for *The Land of the Dragon*. She became Costume Shop Supervisor in 2000.

CC Conn (Lighting and Sound Designer) joined the SFA faculty this year. She has designed for theatre, dance and concert performances in Indiana and Georgia. At SFA this year she has designed lighting for *The Tempest* and lighting and sound for *Anton in Show Business*.

Juanita Finkenberg (Fight Choreographer) earned her MA from California State University in Los Angeles. She is a dancer and a certified fight choreographer. She has worked all four seasons of the New Plays Festival, as well as on such recent plays as *The Tempest*, *Hair*, and *The Two Maples*.

Christopher Flores (Stage Manager) is a sophomore from Austin. His SFA stage management credits include *Anton in Show Business*, *The Shadow Box* and *Raised in Captivity*. He was also Assistant Stage Manager for *The Member of the Wedding* and *Hair*.

Lauren Glass (Assistant Stage Manager) is a freshman from Clear Creek High School in League City, where she was Stage Manager for *A Christmas Carol*, *A Midsummer Night's Dream*, and *Oklahoma*. At SFA she served on the props crew for *Anton in Show Business*.

Darrell D. Grant (Make-up Designer) was Assistant Choreographer for *The Tempest* and *Die Fledermaus*. He has acted in *The Tempest*, *The Shadow Box*, *Trudi and the Minstrel*, *Hair*, *A Fallen Man*, *Pericles*, *Die Fledermaus*, *The Two Maples*, and the Original Cast 2003-2004.

C. Dexter Kinsman (Assistant Director) was Assistant Director and Dramaturg for *Hair* and Assistant Director for *The Yellow Boat* and *Fifth Sun*. He also directed the Studio Hour *Prague Summer* and will be directing *Picnic on the Battlefield* this semester.

Sarah D. Long (Assistant Costume Designer) is a senior from Bonham. She was Wardrobe Master for the Mainstage production of *The Tempest* and has twice worked on the wardrobe crews for the Original Cast. Other crew work includes *Six Characters...*, *Bacchae*, and *Falstaff*.

Tomy Mathys (Scenic Designer) has taught for 40 years at SFA, where he has designed over 200 productions. His most recent scenic designs include *The Tempest*, *Anton in Show Business*, *The Shadow Box*, *Trudi and the Minstrel*, *Sylvia*, *The Member of the Wedding*, and *Harvey*.

Matthew Reeves Oliver (Hair Designer) has worked on hair and makeup crew for *The Tempest*, *Anton in Show Business*, *The Member of the Wedding*, *Die Fledermaus*, and *Six Characters in Search of an Author*. He also acted in *The Two Maples* and directed *The Red Coat*.

ABOUT THE ARTISTIC STAFF (CONT.)

Allen Oster (Director) is a native of North Dakota. His most recent SFA directing credits include *The Shadow Box*, *Hair*, and *Sideways Stories from Wayside School*. He administers the Student-Directed Productions Program and directs SFA's High School Summer Workshop. He received the Teaching Excellence Award for the University in 1996. He received his MFA in Directing from the University of Utah and has acted and directed professionally.

Catherine Ann Restivo (Dramaturg) is a freshman from Conroe. She was Projection Operator for *Raised in Captivity* at SFA last fall. Cathy has acted in *Macbeth* at Conroe High School and in *The Glass Menagerie* with the Crighton Players.

Meaghan Rosenberger (Assistant Stage Manager) is a freshman from Sugar Land. She was Assistant Stage Manager for *The Tempest* and on wardrobe crew for *Anton in Show Business*. Meaghan will also be stage managing *Picnic on the Battlefield* this semester.

Steven H. Shirey (Technical Director) holds a BFA from SFA and an MFA from USC. In addition to being Technical Director since 2001, he has designed scenery for the 2004 Festival of New American Plays and lights for both Mainstage productions and operas at SFA.

Christopher L. Ward (Assistant Scenic Designer) is a junior from Garland. He has designed such productions as *Raised in Captivity* and *The Whole Shebang*. Chris also served as Second Assistant Set Designer for *A Christmas Carol* with the Dallas Theatre Center.

ABOUT THE PLAY & THE PLAYWRIGHT

Tennessee Williams portrays characters with deep inner turmoil in most, if not all, of his works. Kenneth Tynan wrote in "Valentine to Tennessee Williams" that, to Williams, the theatre "... is a place where one has time for the problems of people to whom one would show the door if they came to one's office for a job... Much of what has happened to them has also happened to him... He is the most personal of playwrights. Incomplete people obsess him - above all, those who, like himself, have ideals too large for life to accommodate...." *The Glass Menagerie*, *A Streetcar Named Desire*, *Cat on a Hot Tin Roof*, *The Night of the Iguana* and many of his other works illustrate characters struggling with depression, sexuality and relationships with other humans.

In 1940, Williams went to the Costa Verde hotel fleeing from a troubled affair and trying to repress a "blue devil," as he liked to call his depressions. He claimed that he remembered this summer "more vividly, on the emotional level, than any summer that (he had) gone through before or after..." He made personal discoveries about what he truly desired in the world: life. While in Mexico he started writing a short story with a similar setting and a slightly different plot called *The Night of the Iguana*, but he didn't start writing the play until the late 1950s, almost 20 years later. He wrote in memory of one of the most vivid moments of his life to display the struggles of desperation and human contact.

-- Catherine Ann Restivo, Dramaturg

THE CAST

Pancho	Tim Olivares*
Maxine Faulk	Caitlin Stephenson
Pedro	Christopher J. Gamel
Rev. T. Lawrence Shannon	Chris Howell
Wolfgang	Chad McElveen
Hilda	Jessee Foudray
Herr Fahrenkopf	Nathaniel Reid
Frau Fahrenkopf	Courtney Outlaw
Hank	Robert "Chewy" Minshew
Miss Judith Fellowes	Jessica Harkness
Hannah Jelkes	Savannah Seilheimer*
Charlotte Goodall	Tori Thompson*
Nonno (Jonathan Coffin)	Sean Tyler McDaniel*
Jake Latta	Jeffrey Stirl

Understudy for Maxine Faulk Cassidy C. Risien

Understudy for Rev. Shannon Chris Kennedy *

SYNOPSIS OF SCENES

Act One, Scene 1: Afternoon

Act One, Scene 2: Later that afternoon.

15-minute intermission.

Act Two: That night.

The play takes place in the summer of 1940 in the Costa Verde Hotel in Puerto Barrio, on the west coast of Mexico.

* Designates a member of the Beta Phi cast of Alpha Psi Omega, the national honorary dramatics fraternity.

FROM THE DIRECTOR

*And so as kinsmen met a-night
We talked between the rooms
Until the moss had reached our lips
And covered up our names -*

Emily Dickinson

The Night of the Iguana is set on the verandah of a rustic hotel on the coast of Mexico in the summer of 1940. To this torrid, primitive way station come the Reverend T. Lawrence Shannon, a defrocked Episcopal priest leading a group of American women on a tour; Hannah Jelkes, a Nantucket spinster and artist; her aged grandfather, Jonathan Coffin (Nonno), "the world's oldest living and practicing poet"; a group of Germans, exultant over Hitler's early war victories—all of them guests of the hotel's proprietor, the formidably crude Maxine Faulk. Over one steamy day and a stormy night, Shannon confronts the demons of frantic sexuality, religious guilt and emotional confusion, and he learns from both the earthy simplicity of Maxine and cool serenity of Hannah. . .

No one could have foreseen then—although several may have suspected—that this would be considered Williams's last great work for the theatre. Certainly it has a poetic depth of compassion, and it allows hope even while it proclaims the author's love for Nonno and for the natural saintliness of Hannah and the tortured but still searching Shannon. These three characters were closest to the playwright's heart, and they had the greatest value for him as poet, as artist, as struggling believer. . .

What is very clear is that to be redeemed for meaning is to find a way through the jungle, and this we can do only in the company of one another.

"His theme," Arthur Miller reflected years later, "is perhaps the most pervasive in American literature, where people lose greatly in the shadow of the mountain from whose peak they might have had a clear view of God. It is the romance of the lost yet sacred misfits, who exist in order to remind us of our trampled instincts, our forsaken tenderness, the holiness of the spirit of man."

- from *The Kindness of Strangers*
by Donald Spoto

THE TECHNICAL STAFF

Technical Director	Steven H. Shirey
Costume Shop Supervisor	Barbara Blackwell
Assistant Stage Managers	Lauren Glass, Meaghan Rosenberger
Assistant Scenic Designer	Christopher L. Ward
Assistant Costume Designer	Sarah D. Long
Master Electrician	Ella Haag
Lightboard Operator	José Marez
Soundboard Operator	Clint Hanna
Properties Mistress	Amanda Chandler
Special Effects	Philip Miatech, Zach Russell
Scenery Construction	Theatre 150 and 350
Properties Crew	Catherine Anderson, Arianna Bermudez, Nashanna Gates, Izchel Hernandez, Casey Stephens, Stephanie Tilley, Sarah Zabinski
Light Hang Crew	Ryan Angell, Robert Bills *, Jeff Lochmann, Nick Mills, Weston Wetzel, Stephen Witkowicz *
Paint Crew	Lacey Carnley, David Francis, Katie Jones *, Ashleigh "Grace" Lubeck, Shawna Lynch *, Mark McManus, Brandon Polanco, Ryan Williams, Jason Zednick
Wardrobe Head	Boni Newberry *
Costume Construction	Theatre 150 and 350
Wardrobe Crew	Brittany Djie, Julie Glover, Stephanie Rhoades, Kevin Scholtes
House Managers	Aslan Hollier, J. Alan Spence
Ushers	Theatre majors and minors
Programs	Rick Jones, Tim Olivares *
Box Office Supervisor	Diane Flynn
Publicity	Sylvia Bierschenk, Office of Arts Information

ACKNOWLEDGMENTS & SPECIAL THANKS

Angela Bacarisse, Dr. C. W. Bahs,
Wil & Jennie Blough (Don's Plants),
La Carreta Mexican Restaurant,
Hobby Lobby, Hardy Meredith, Steve Shirey

THE NIGHT OF THE IGUANA is produced
by special arrangement with
Dramatists Play Service, Inc.

**SFA School of
Theatre
Faculty and Staff**

Dr. Richard Berry
Dean, College of Fine Arts

Dr. Clarence W. Bahs
*Professor and Director of
the School of Theatre*

Ms. Angela Bacarisse
Assistant Professor

Ms. Carolyn Conn
Assistant Professor

Dr. Richard Jones
Associate Professor

Mr. Kyle Kennedy
Assistant Professor

Mr. Tomy Matthys
Associate Professor

Dr. Alan Nielsen
Professor

Mr. Allen Oster
Professor

Mr. Jack Heifner
Playwright-in-Residence

Ms. Shari Ellsworth
Lecturer

Ms. Juanita Finkenberg
Adjunct Faculty

Mr. Brad Maule
Adjunct Faculty

Mr. David Raine
Adjunct Faculty

Ms. Barbara Blackwell
Costume Shop Supervisor

Mr. Steve Shirey
Scene Shop Supervisor

Ms. Nelda Hartley
Administrative Assistant

**Friends of the Arts
Theatre Division
Theatre Board**

Betty Ann Taylor (Pres.)
Anne & David Norton (VPs)
Stephanie George (Secy./Treas.)
Frances Spruiell (Council Rep)
Stacy Jacob Borders,
Susan Conley, John Hibbard,
John & Molly Hill,
Michael Langford,
Nancy Lemberger, Brad Maule,
Melissa McMillian-Cunningham,
Bo Miller, Gary Pankratz,
David Raines & Dana Henderson,
Linda Renfro, Jodie Stone,
Bill Taylor

**Scholarships
2005-06**

Alumni Scholars

Thomas Brazzle, Justin Cole,
Chad Kinsman,
Natalie Melcher, Erin Orr

Regents Scholars

Sara Boland-Taylor,
Jessee Foudray, Sara Jones,
Meaghan Rosenberger

**School of Theatre
and Other Scholarships**

Justin Bauer, Sara Boland-Taylor,
Jessica Findell, Chris Gamel,
Nashanna Gates, Lauren Glass,
Micah Goodding, Ella Haag,
Xzavien Hollins, Sara Jones,
Shawna Lynch, Nadaha McCullough,
Mark McManus, Philip Miatch,
Boni Newberry, Brandon Polanco,
Josh Real, Melissa Recalde,
Meaghan Rosenberger,
Kevin Scholtes, Casey Stephens,
Tori Thompson, Sarah Zabinski

SIFA
School of **Theatre**
STEPHEN F. AUSTIN STATE UNIVERSITY

**Spring 2006 Mainstage Season
Faculty-Directed Productions**

The Night of the Iguana

by Tennessee Williams **February 21-25**

A Festival of New American Plays

Directed by Jack Heifner **April 25-29**

All performances in the Downstage Theatre

China Dolls

by Jack Heifner April 25 & 28 at 7:30

States of Grace

by James McLure April 26 at 7:30 & April 29 at 2:00

Changing

by Gretchen Cryer April 27 & 29 at 7:30

**Spring 2006 Downstage Season
Student-Directed Productions**

7:30 p.m. Friday; 2:00 and 7:30 p.m. Saturday

The Open Meeting

by A. R. Gurney **February 10-11**

The Laramie Project

by Moises Kaufman **March 3-4**

Goodbye Oscar

by Romulus Linney **March 24-25**

Picnic on the Battlefield

by Fernando Arrabal **April 7-8**

Friends of the Arts, Art, Music and Theatre

Membership Period: Through February 9, 2006

Diamond

Mr. and Mrs. Edward Cole
Nacogdoches Memorial
Hospital

Gold

Patrick and Valerie Bray
Ann Bradshaw Stokes
Foundation
Nacogdoches Convention and
Visitors Bureau

Silver

3M Investments No. 2 LLC
Elaine Burgess Ashcroft
Bancorp South
Richard and Debbie Berry
Ms. Marian G. Compton
Drs. Tito and Lupe Guerrero
Mrs. Melva Diana Haney
Ms. Melva Hines
Dr. David Lewis
Medical Center Hospital
Ms. Sarah M. Mills
George and Peggy
Schmidbauer
The Drs. Dolamu and Modupe
Sokunbi
Gerard and Carrie Ventura
Dr. and Mrs. Larry Walker
Wednesday's Child Benefit
Corporation
Mr. and Mrs. Robin Welch
Tom and Peggy Wright

Bronze

David and Eloise Adams
Frances Adams
Dr. and Mrs. James A. Allums
Mrs. Elisabeth Bilan
Dr. Louise Bingham
Dr. and Mrs. Roger L.
Campbell
Dr. Jill Carrington
Citizens 1st Bank
Mr. and Mrs. Lee Danis
Pat Dolan & Linda Mock
Mrs. Lynn Fisher
Dr. and Mrs. Bill Gandy
Dr. John W. Goodall
Mr. and Mrs. Alan P. Jones
Mr. and Mrs. Robert W.
Kastenmeier
Mr. and Mrs. Jim McCain
Mrs. Charlotte B. Montgomery
Sue S. Muckleroy
David and Michelle Sandoz
Mike and Barb Stump
Dr. Nancy Wisely

Sponsor

Mr. Fred J. Allen
Andrews and Andrews,
Attorneys at Law
Mr. and Mrs. Jeff Badders
Dr. and Mrs. Arthur Benoy
Ed and Marsha Blount
Mr. and Mrs. Gerald Clapp
Ms. R. Yvette Clark
Lee and Susan Danis
Richard and Lucille DeWitt
Jack R. Erwin Family
Gound Chevrolet Company

Tito and Lupe Guerrero
Durdward and Mary Henry
Jesse and Hollis Jones
Robert Kinsell and Judy
Morgan-Kinsell
Mrs. Robert Kline
Mr. and Mrs. Jerry Moore
Max and Carolyn Morley
Bill and Sue Parsons
Jim and Margaret Perkins/
Citizens 1st Bank
Mr. and Mrs. David Prince
Barbara and Richard
Pulaski
Dr. and Mrs. Sid Roberts
Elizabeth and Thornton
Savage
Mr. James E. Seale
Wayne and Mary Ann
Slagle
Mr. and Mrs. Douglas V.
Smith
Mr. and Mrs. Joseph Smith
Shannon L. Smith M.D.,
F.A.C.S.

Mrs. Jean Stephens
Ms. Stephanie Stephens
Mrs. Kimberly Stockseth
Joyce and Doug
Swearingen
Mrs. Greg Tate and Rick
Hurst
Mrs. Margie Tipton
The Rev. Doug and Cheryl
Tucker
Ms. Irene H. Waters
Mike White and Shannon
Smith
Mr. and Mrs. Edwin Whittle
Gayle D. Wyatt

Patron

Elizabeth Akamatsu and
Piero Fenci
Ron and Bobbie Ann
Anderson
Mrs. Barbara Arwood
Mrs. Marianne M. Ashy-
Davis
Dr. Shakoor A. Awan
Ms. Sharon Bailey
Mr. Roger P. Bartel
Mr. and Mrs. Al Bem
Mrs. Kathi Berridge
Rich and Charlotte Bock
Mr. James Terry Bourdier
Mr. and Mrs. Marc C.
Brigham
Mr. and Mrs. Gary L.
Brittain
Mr. and Mrs. H. J. Brunotte
Ms. Susan Bryan
Roland and Claire Bunge
George P. Campbell
Mr. Brent C. Cannon
Earl and Christine Carter
Castleberry, Barham &
Heard Insurance
Ms. Caroline Suzanne
Chandler
Dr. Robert L. Clifford
Susan Cox Conley
Mr. Tim Connolly In Honor
of Trevor Connolly

Mr. and Mrs. Alfred
Danheim
John and Doris Daniel
Daughters of the American
Revolution
Mr. Robin Dawley
Mr. and Mrs. Donald K. Day
Dr. and Mrs. John P. Decker
Mrs. Nancy Delaney
Mr. and Mrs. Robert
Delgado
Mr. and Mrs. Skipper M.
Drost
Mr. and Mrs. Tracy L.
Estelle
Fairbanks Title Agency, Inc.
Dr. and Mrs. Ivan Filippo
Mel and Juanita Finkenber
Todd and Amy Fish
Ms. Anna Fleckenstein
Mr. Gary Q. Friedls
Col. and Mrs. Harvey W.
Gillette
Mr. and Mrs. Lupe Gonzales
Mrs. Bettie Griffin
Ms. Laura L. Guthrie
Jerry and Toni Hale
Mr. Larry Harkness
Ms. Sheila Henderson
Mr. and Mrs. Guy Hicks
Mrs. Melva Hines
Mrs. Sherry Houston
Dr. and Mrs. Jack W.
Hudgins
Tony and Anne Jacobs
Mr. and Mrs. Jim Jenkins
Mr. and Mrs. Ray C.
Kindel
Mr. and Mrs. Ray Klodzinski
Mr. Ed Konderia
Dr. Forrest T. Kroschel
Mr. and Mrs. Robert John
Kruger
Mr. and Mrs. Jerry M.
Lancaster
March of Dimes
Dr. and Mrs. Travis Mast
Mr. and Mrs. Gary Matocha
Jan and Catherine McDaniel
Dr. Darrel and J.P.
McDonald
David and Debra McKinney
Mr. and Mrs. Joseph E.
Miller
Mr. William Miller
Mel and Virginia
Montgomery
Dr. and Mrs. John T. Moore
Milton and Lila Moore
Roland and Jean Muckleroy
Andrew and Kim Mytelka
Nacogdoches County
Republican Women
Nacogdoches ISD
Mr. Les Neal
Dr. and Mrs. John R. Pack
Gary L. Pankratz
Mr. Ron Patrick
Ms. Gretchen Patterson
Bill and Barbara Patton
Mr. Asa Peavy
Mr. and Mrs. Robert C.
Pfullmann

Ms. Kathleen Phillips
Ladeen and Jim Pluss
Mr. and Mrs. Mark Powell
Mrs. Sheri W. Prejan
Camille and Kenneth Price
Kathryn and Randy Price
Leon and Debbie Ray
Ms. Cassandra Redd
Mr. Donald Richter
Dr. F. Barry Roberts
Dr. Patricia Read Russell
Justin Dominic Ryan
Mr. and Mrs. Robert John Sabol, Jr.
Mr. and Mrs. H. J. Schexnayder, Jr.
Mr. and Mrs. Tom Schwab
Mr. and Mrs. Val Sharp
Mrs. Cindy L. Silberman
Thomas and April Lynn Smith
Tip and Nanny Smith
Mrs. Agnes W. Sparks
Mr. and Mrs. Roger Sparks
Mr. Mark C. Spurlock
Dr. Jack and Rebecca Stanly
Dr. Julie and Mr. Mark Stephens
Mr. and Mrs. Bruce A. Stevenson
Mr. and Mrs. Thomas Thompson
Orville Todd
Ms. Karen Michelle Towle
Tyler County Art League Compass
Ms. Linda Sue Wallace
Mr. Robert Conrad West and Mrs.
Holly Foye-West
Ms. Wyndell Westmoredland
Mr. and Mrs. Hank Wierhold
Mr. and Mrs. Norman M.
Wington
Billy and Carol Willis
Mr. and Mrs. Thomas D. Wright
Mr. and Mrs. Richard Young

Contributor

Mr. and Mrs. Mike Aikin
Mr. Joseph D. Alford
Mr. Bert and Dr. Mary Appleberry
Ms. Jami Arnst
Carol Athey and Ranleigh
McAdams
Ms. Veida Axley
Clarence and Barbara Babs
Dr. and Mrs. Bruce Bailey
Dr. Rebecca Bailey
Dr. and Mrs. Flamen Ball
Dr. and Mrs. Ronnie Barra
Scott and Susan Bartos
Dr. Claudia Beach
Mr. Roland Hugh Bear
Mr. and Mrs. Gary L. Beard
Mr. and Mrs. Miguel Blanco
Mrs. N. G. Bright
Shelley Brophy
Betty F. Burr
Dean and Theresa Cable
Mr. Robert J. Cavanagh
Mr. and Mrs. Fred Chandler
Shelba Coe
Mr. Ben Cooper
Mr. and Mrs. Mark D. Cooper
Tommy and Margaret Cordova
Mr. and Mrs. Daniel Cotten
Campbell and Peggy Cox
Ms. Leilabeth W. Crispin
J. Kelly Cunningham and Melissa
McMillian-Cunningham

**Friends of the Arts, Art,
Music and Theatre (continued)**

Ms. Katherine T. Davis
Mr. and Mrs. W. I. Davis, Jr.
Alicia and Richard Deupree
East Texas Appraisal Services
Mr. and Mrs. Mike Emmert
Ms. Christie Ferraraccio
Judson J. and Carol W. Fisk
Mr. Clarence Fogelstrom
Barton and Masako Gaskin
Mrs. Jean Gore
Mr. and Mrs. John R. Hicks
Mr. Lawrence Homan
Mr. Howard Horton
Mr. and Mrs. Charles Hukill
Dr. and Mrs. Oren C. Irión
Louise Jacks
Mr. and Mrs. Brandon R. Johns
Mrs. Jerry K. (Joan) Johnson
Charles and Corinne Jones
Lisa Rice Jones
Mr. and Mrs. Reese Kennedy
Carolyn S. King
Mrs. Rebecca G. (Stanly) King
Mr. and Mrs. Ray Klodzinski
Mr. Steven Kullback
Mrs. Carolyn Lacy
Judith and Ken Lauter
Mr. David C. Lawson
Dr. Nick and Donna Gaston
Manitzas
Dr. Rebecca Mars
Dolores M. Martin
Valroy and Adelia Kaye
Maudlin
Mr. Michael S. Maurer
Ms. Deborah McCratic
Mr. and Mrs. Clyde
McCullough
Drs. Tom and Sylvia McGrath
Mr. and Mrs. George
McKinney
Sarah McMullan
Mr. and Mrs. Phillip Medford
Mrs. Otilie Milliken
Mr. and Mrs. Edgar Mirabal
Mrs. Karen Mobbs
Mrs. Cynthia Nussenblatt
The Old South Garden Club
Mr. and Mrs. Michael E.
Olivares
Mr. and Mrs. Edward Paschall
Joseph and Patricia Pate
Carissa A. Poe
Martha Jo Price
Ms. Charlotte Jo Pruitt
Mr. and Mrs. Keith Reed
Joan and Allen Richman
Mr. and Mrs. Curtis Rickman
Mr. and Mrs. Ray Rinker
Mr. and Mrs. Eugene Rolston
Val and Suzanne Rose
Mr. Brent Roycroft
Mr. and Mrs. John Ruckel
Mrs. Carol Denise Scandel
Ms. Wanda C. Schenk
Ms. Deborah L. Schroeder
Mr. and Mrs. Ronald L. Sedtal
Dr. and Mrs. Vyrne Shofner
Mr. Bradley Ryan Smith
Mr. and Mrs. David Smith
Mr. and Mrs. Sidney R. Smith
Sue and Leon Smith
James and Sandy Snyder

John and Donna Peueto
Stephens
John J. Stransky
Ms. Betty Ann Taylor
Ms. Colleen Terrell
Mrs. Nancy Terry
Mr. and Mrs. Tim Tindell
Mr. and Mrs. Jerry D.
Vickery
Richard and Sarah Wallace
Warren and Sandy Wallace
Dr. and Mrs. Arthur C.
Watson, Jr.
Mr. and Mrs. Floyd (Dock)
Watson
Mr. Steven Watson
Irene Perkins Welch
Ms. Joselyn Winter
Mr. Kurt E. Zecchin

Member
Tim and Vicki Baggett
Mike Bay
Ms. Jackie L. Byler
Mr. Christian Cole
Wanda Cuniff
Ms. Marilyn Davis
Annette Dawson
O'Neal and Ster Dubberly
Dr. and Mrs. Dale Dupuis
Pam and Alan Fitch
Stephanie George
Mrs. Charles Grimland
Mrs. Marie Hargrove
Sam and Johnnie Faye
Hattman
Durward and Mary Henry
Neal and Joan Houston
Rick and Christy Hurst
Ms. E. A. Keller
Mrs. Lucille Kennedy
John and Patti Langston
Don Lawler
Ryan and Anna
Middlebrook
George and Sarah Alice
Millard
Mrs. Mildred Murphy
Shelley H. Musgrave
Catherine and William
Niggle
David and Anne Norton
David O'Neill
Mr. and Mrs. Buddy Ryan
Mr. and Mrs. Robert W.
Schmitz
Mrs. Mary Jo Schnorbus
Francis Spruiell
Mr. and Mrs. Mark
Surman
Mr. Donald and Dr. Sharon
Templeman
Ms. Ellen L. Thomas-
Armstrong
Mrs. Mary Alice Thompson
Captain Joe Wicks
Shirley R. Watterston in
memory of Dirk Wheeler
Mrs. Judith D. Williamson
Carol Marie Wilson
Ms. Linda Zakrzewski

**Friends of the Arts,
University Series**

Membership Period:
September 1, 2005, through August 31, 2006
Current to February 9, 2006

Impresario
Stephen F. Austin State
University

Producer
The Daily Sentinel

Director
BancorpSouth Fredonia
Citizens 1st Bank
Commercial Bank of Texas
Glaucoma Consultants of East
Texas
Lehmann Eye Center
Nacogdoches Medical Center
Hospital
Regions Bank Stone Fort
Tipton Ford-Lincoln-Mercury,
Inc.

Designer
A. G. Edwards & Sons, Inc.,
Shannon Smith
Mr. and Mrs. Jeff Badders
First Bank and Trust
FrameSaver of Nacogdoches
Gound Chevrolet Company
Tito and Lupe Guerrero
Kennedy's Jewelers
Nacogdoches Memorial Hospital
SFA Alumni Association
SFA Foundation
Timber Springs at SFA

Artist
Austin Bank of Nacogdoches
Betty F. Burr
Fredonia Hotel and Convention
Center
Huntington State Bank
Joe Max Green Insurance
Concepts
Mize Department Store
Michael Mollot, M.D.
R. & K Distributors, Inc.
The UPS Store
Wendy Wyatt Buchanan, Edward
Jones Investments
Tom and Peggy Wright

Guarantor
Ambiance
Mr. and Mrs. Edward Cole
Curtis & Clark Engineering, LLC
Dr. and Mrs. Robert Z. Eanes
Excel Car Wash, Inc.
Grogan Clean Care
House of Versailles Perfumery
McKnight Financial Services
Mr. and Mrs. James H. Moore
Nacogdoches Eye Associates
Nacogdoches Gastroenterology
Ray Johnston Counseling
Services
Dr. F. Barry Roberts
Triad Office Solutions
University Rental, Elder
Enterprises

The Varsity Book Store
Xerographix East Texas

Sustainer
Elaine Burgess Ashcroft
Joe and Sylvia Bierschenk
Mrs. Elisabeth Bilan
Dr. Louise Bingham
Dr. Mary Cullinan
Fern Faulkner
Mel and Juanita Finkenberg
Durward and Mary Henry
Adele Hyncik
Bob and Joan Lawson
Mr. and Mrs. Dale Litton
Mrs. Theresa Reeves
LTC Ben J. Sultenfuss

Supporter
John F. Anderson and Ann
Doyle-Anderson
Anonymous
Dr. and Mrs. Stewart Barron
Philip and Mitzi Blackburn
Mr. and Mrs. Jack A. Burnell
Dr. Sue Butts
Mrs. Kent Castle
John and Doris Daniel
Dr. and Mrs. John P. Decker
George and Patricia Fitch
George and Deanne Franks
Ms. Deborah K. Garrett
Ms. Jayne Garrison
Dr. and Mrs. Malcolm
Graham
Mildred Hancock
Mr. and Mrs. Alvin J. Hejl
Dr. June Irwin
Drs. Gary Konrad and
Catherine Albers
Drs. Ted and Janice Ledet
Ms. Jeanette Milstead
Roland and Jean Muckleroy
Dr. and Mrs. Jack Nelson
Jimmy and Peggy Partin
Carolyn M. Price
Peggy Price
Ms. Linda Renfroe
Don Richter
Dr. Patricia Read Russell
Ms. Mary Grace Simms
Russell and Trish Smith
Sue and Leon Smith
Dr. and Mrs. Jack Stanly
Jodie Stone in memory of
Charlene Manley
Bob and Shirley Szafran
Gerard and Carrie Ventura
Dr. and Mrs. Arthur C.
Watson, Jr.



Chevy Colorado Crew Cab

GOUND CHEVROLET

MARK OF EXCELLENCE AWARD WINNER

Serving Nacogdoches since 1953

*Our Commitment:
To give our customers the best in
Sales and Service*



silverado

UNIVERSITY SERIES

Dean, College of Fine Arts	Richard Berry
Programming and Development	John W. Goodall
SFA Gallery	Shannon Bailey
Arts Information	Sylvia Bierschenk
Box Office and Audience Services	Diane J. Flynn
Facilities Manager	Steven Shirey
House Manager	Joshua Alan Spence
Ushers	Phi Mu Alpha Sinfonia

FOR YOUR INFORMATION

Tickets

Charge tickets conveniently by phone. Visa, Mastercard, American Express and Discover are accepted. Normal box office hours are weekdays 8 am to 5 pm. On performance dates, the Box Office is open 8 am to performance time on weekdays and one hour prior to performance time on Saturdays and Sundays. The Box Office is located in Room 211B in the Griffith Fine Arts Building. Programs on the University Series are not recommended for children under five years of age. Each member of the audience must have a ticket regardless of age.

Late seating

In fairness to those already seated, patrons who have the misfortune to arrive late will be seated near the rear of the auditorium during an appropriate break in the performance.

Parking

Parking in front of the Griffith Fine Arts Building is available to those patrons who join the FRIENDS OF THE ARTS UNIVERSITY SERIES at the SUPPORTER Level. Parking in other campus areas is available. We recommend Vista Dr., the parking garage off Griffith Blvd. south of the University Center, the lot behind the University Police Department off of East College St. and the lot on the corner of North St. and Wettermark. Please allow ample time for your arrival.

Persons with disabilities

Persons with disabilities are requested to reserve seats as soon as possible to request special assistance or accommodations needed for participation in events. Parking is provided in front of the Griffith Fine Arts Building on Alumni Drive. The elevator is located in the East Tower (campus side). Locations for wheelchair seating are available on the first floor of the W. M. Turner Auditorium. Program booklets in large type are available for visually impaired persons. Please call the Box Office at least two days in advance of the event and a copy will be held for you.

Rest Rooms

Rest rooms and drinking fountains are located in the lobby adjacent to the auditorium on the first level and in the hallway outside the balcony.

Telephone

A public telephone is located in the East Tower, main level, next to the elevator.

Food, beverages and smoking

Please do not take food or drinks into the auditorium. The use of tobacco products is not permitted in the Griffith Fine Arts Building.

Cameras, paging devices, cell phones and other electronic devices

Please deactivate all electronic devices before entering the auditorium. Patrons may also check them with our ushers prior to entering the auditorium so they may be guarded by the House Manager. Patrons who expect to be on call while attending a performance are requested to leave their names and seat locations with the House Manager. You will be contacted immediately and discreetly when called. Cameras and recording devices are not permitted in the auditorium.

Ticket Exchange Policies

Season Ticket patrons may exchange tickets until two business days prior to the event. We regret there can be no refunds. All sales are final.

View our complete ticket exchange policy online at www.finearts.sfasu.edu or stop by the Box Office to receive a printed copy.

Mailing lists

To receive information about future attractions in the College of Fine Arts, please complete a mailing list card available at the Box Office or call 468-6407.

Lost and found

Patrons who lose articles while attending an event may make inquiries with the House Manager or call the Box Office during regular office hours.

To contact us, call:

Dean, College of Fine Arts	468-2801
Programming and Development	468-1303
Arts Information	468-5820
Box Office	468-6407
or toll free	(888) 240-ARTS

Saluting the performing and visual arts

Stephen F. Austin State University



Free checking Full-service Saturday banking
Home and auto loans Online banking
MasterMoney debit card Trust & investment services



Big enough to serve. Small enough to care.

1009 N. University Drive • (936) 559-5100

www.fbtet.com



Member
FDIC

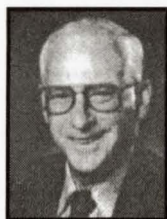
Cleveland • Diboll • Hemphill • Jasper • Kirbyville • Lufkin
Nacogdoches • Pineland • San Augustine • Splendora

**Curtis & Clark
Engineering, LLC**

Nacogdoches, Texas
564-5356



HELPING YOU
UNDERSTAND
AND BENEFIT
FROM
DEREGULATION



MICHAEL MOLLOY, M.D.

Specializing in
STOMACH & COLON DISORDERS
Endoscopy • Liver Disease • Colon
569-6449



Two Locations
1225 N. Mound & 619 Russell Blvd.

COLON CANCER
DETECTED

*We Proudly Support
The Performing and Visual Arts
at
Stephen F. Austin State University*

**RESPONSIBILITY
MATTERS™**



ANHEUSER-BUSCH, INC.

Budweiser
KING OF BEERS.

R & K Distributors, Inc.

You might not be able to do everything at once, you can however do it all in one place.



Let us help you with that.

The UPS Store™

Shipping Services

Packaging Services

Mailbox & Postal Services

Copying Services

Finishing & Printing Services



The UPS Store #3855
3205 N. University Ste #D
Nacogdoches, TX 75965

(Across from the Post Office)

Tel: (936)559-5614

Fax: (936)559-0434

Email:

store3855@theupsstore.com

Jodie Stone, Owner

©2003 United Parcel Service of America, Inc.



Another Round of Applause for the

***SFA University
Series!***

Citizens 1st BANK

3010 University Dr. • 936-560-1401 • www.citizens1stbank.com



Your Community.
Your Paper.



The Daily Sentinel

For subscription or advertising
information call

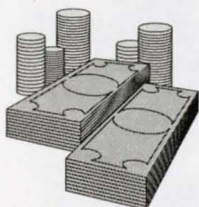
564-8361

www.dailysentinel.com

AMBIANCE

Home Furnishings - Gifts - Interior Design

303 North Street | Nacogdoches | 564-4906



McKnight Financial Services

*Retirement • Investments • Life Insurance
Long-Term Care • Health Insurance*

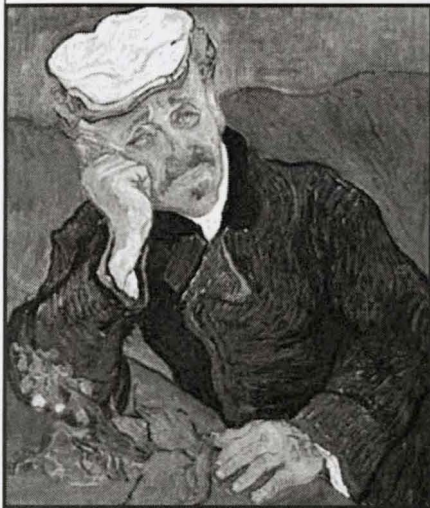
Financial Planning that meets your needs.

Bob McKnight
Roger McKnight
Phone: (936) 564-2307

Wes McKnight



McKnight Financial
Services



**THIS PAINTING WAS ONCE
AUCTIONED FOR OVER
\$85 MILLION DOLLARS TO AN
ENTHUSIASTIC COLLECTOR.**

**HE MUST HAVE HAD
OVERDRAFT PRIVILEGE.**

**FREE CHECKING WITH OVERDRAFT PRIVILEGE
FROM HUNTINGTON STATE BANK.**

**JUST ONE OF THE MANY PRODUCTS OFFERED TO
HELP YOU ENJOY THE FINER THINGS IN LIFE.**

(other charges may apply)

4822 NORTH ST. | 462.8800 | WWW.HUNTINGTONSTATEBANK.COM

COME GROW WITH US!



HSB

HUNTINGTON STATE BANK



Equal Housing
Lender

Member FDIC

Coming soon

Timber Springs

at SFA

A Premier Retirement Campus



*A lifestyle of grace and beauty
A lifestyle of art and learning
A lifestyle of freedom and enjoyment
The Timber Springs at SFA Lifestyle*

Call to reserve your place today!
1.800.940.0411

East Texas' only university-affiliated retirement campus! *Timber Springs* at SFA is proud to support The University Series 2005-2006 Season.



The Fredonia

Hotel and Convention Center

(936) 564-1234

Email: reservations@fredoniahotel.com

See us at: www.fredoniahotel.com

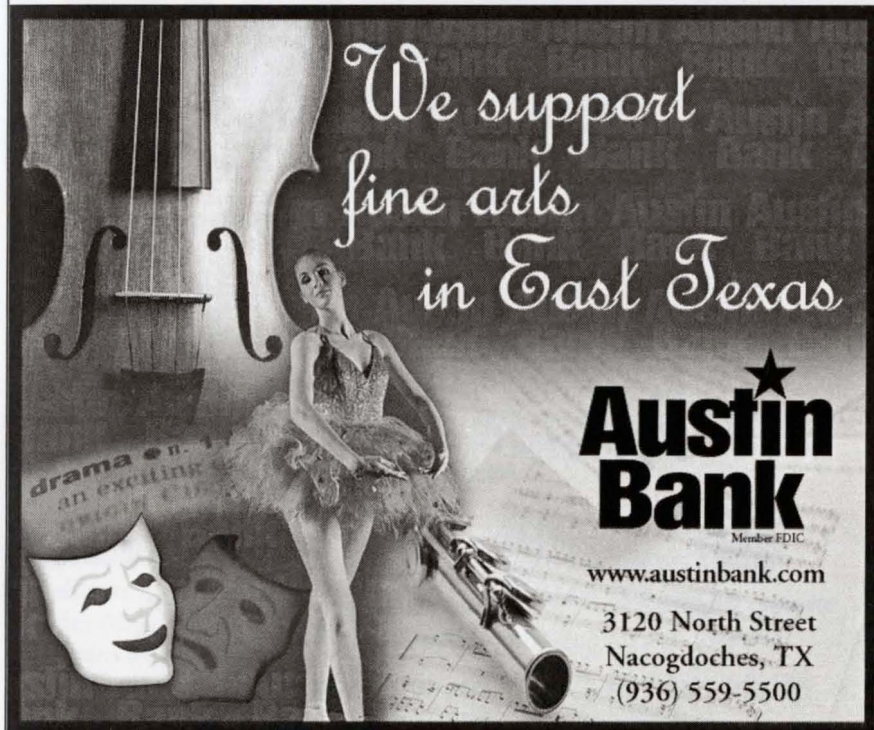
200 North Fredonia Street • Nacogdoches, Texas 75961

We support
fine arts
in East Texas

**Austin
Bank**
Member FDIC

www.austinbank.com

3120 North Street
Nacogdoches, TX
(936) 559-5500



Grogan Clean Care

24-HOUR EMERGENCY SERVICE

Carpet Cleaning Certified Operators
Oriental Rugs - Hand Washed

Keith and Pat Grogan, Owners 1406 East Starr 564-5722

XEROGRAPHIX EAST TEXAS

PROMPT LOCAL SERVICE

Xerox products to meet every need and every budget

- Color Copiers
- Digital Solutions
- Fax Machines
- Laser Printers



424 North Street • Nacogdoches, TX • 936-569-1992



NACOGDOCHES EYE ASSOCIATES

Since 1925

Eyecare for those who know the difference

3208 N. University Drive, Suites B & C
Nacogdoches

564-7661 or 564-EYES

Mark Lanier, O.D.
Therapeutic Optometrist

Ashley Risner, O.D.
Therapeutic Optometrist
and Low Vision Consultant

The House of Versailles

Paris  *Perfumery & Gifts*



Christy Rogers
Owner

280 Ladies' Perfumes • 80 Men's Colognes
Gels, Powders, Lotions & Soaps
Crabtree & Evelyn® Burt's Bees®
Circle E® • Votivo® • Jewelry & Gifts

936-569-1818 • M-F 10-6 • Sat. 10-4 • 404 E. Main, Nacogdoches

NOW PLAYING

And Baby Makes Three

Directed by:



Sheila Hill, M.D. Kim Schaus, M.D.

*After 9 Months of Waiting!
Don't Miss the Dramatic Debut!*

THE CAST

(In order of appearance)

The Mom Mom
The Dad Dad
Doctors..... Dr. Sheila Hill
 Dr. Kim Schaus
The Baby.....Baby

THE SETTING

This new and exciting play takes place in a custom-made labor and delivery suite at Nacogdoches Memorial Hospital. Providing the ultimate in comfort and privacy, they deliver a complete bundle of services individually packaged for each expecting family.



NACOGDOCHES
Memorial Hospital

1204 MOUND ST. • 936-564-4611
PHYSICIAN REFERRAL 569-7777

www.nacmem.org

*2005-2006
College of Fine Arts
Season Sponsor*



ROLEX



OYSTER PERPETUAL DATEJUST AND LADY-DATEJUST

Kennedy's
JEWELERS

201 East Main
Nacogdoches
(936) 564-7671, Fax (936) 564-2650