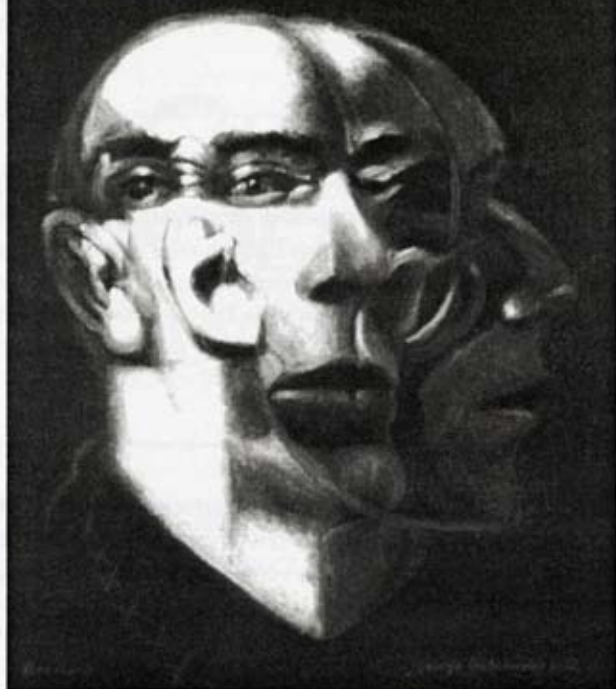


SFA College of Fine Arts & Department of Theatre present

LUIGI PIRANDELLO'S  
**SIX CHARACTERS IN  
SEARCH OF AN AUTHOR**

translated by Paul Avila Mayer



NOVEMBER 16-20, 2004

7:30 P.M.

W. M. TURNER AUDITORIUM

SFA  
Department of  
Theatre

Sponsored in part by

**TIPTON**  
FORD-LINCOLN-MERCUY

## QUOTATIONS FROM LUIGI PIRANDELLO

... alas, without the least fault nor the slightest pleasure of the inventor, there is a certain Pirandello lens, called a diabolical brand by the malicious, which makes you see double and triple and slanted, and in short, makes you see the world upside down. Many still use these lenses, despite the fact that I do not miss any occasion to make them know that such lenses ruin their eyesight.

In fact, every creation, every vision of life, every revelation of the spirit, necessarily carries within itself problems, questions, logical contradictions, the more decisive and evident as these creations, visions, and revelations are organic and comprehensive: and this simply because the mystery is congenital to the spirit, and to look with new eyes, to express frankly, to reorganize life is to project life once more in mystery.

I can only say that, without having made any effort to seek them out, I found before me, alive—you could touch them and even hear them breathe—the six characters now seen on the stage. And they stayed there in my presence, each with his secret torment and all bound together by the one common origin and mutual entanglement of their affairs, while I had them enter the world of art, constructing from their persons, their passions, and their adventures a novel, a drama, or at least a story. Born alive, they wished to live.

(*Six Characters in Search of an Author*): a mixture of the tragic and the comic, fantastic and realistic, in a humorous situation that was quite new and infinitely complex, a drama which is conveyed by means of the characters, who carry it within them and suffer it, a drama, breathing, speaking, self-propelled, which seeks at all costs to find the means of its own presentation; and the comedy of the vain attempt at an improvised realization of the drama on stage.

SFA DEPARTMENT OF THEATRE  
and the  
COLLEGE OF FINE ARTS  
present

# SIX CHARACTERS IN SEARCH OF AN AUTHOR

BY LUIGI PIRANDELLO  
ENGLISH VERSION BY PAUL AVILA MAYER  
DIRECTED BY RICK JONES

*Scenic Design by Tomy Matthys*  
*Costume Design by Angela Bacarisse*  
*Lighting Design by Steven H. Shirey*  
*Hair & Makeup Design by Dusti Murae Meeks*  
*Stage Manager: Amber Talley*  
*Assistant Director: Whitney L. Smith-Nelson*  
*Dramaturg: Ruth Ramsey*

NOVEMBER 16-20, 2004  
7:30 P.M.  
W. M. TURNER AUDITORIUM

## ABOUT THE CAST

**Justin Urias Bauer** (2nd Juvenile) is a sophomore theatre major from Austin. His previous acting credits include roles in SFA student productions of *The Fifth Sun*, *The Vise*, and *Devil's Karma*. This is Jub's first appearance on SFA's Mainstage.

**Robert Bills** (Boy), a junior theatre major from Freeport, has appeared in the SFA productions of *Sideways Stories from Wayside School*, *The Man Who Came to Dinner*, *You're A Good Man, Charlie Brown*, *1918*, and *Lot 13: The Bone Violin*.

**Marie Charlson** (Mother) has acted in many SFA productions, including *Lucky*, *The Land of the Dragon*, and *Ghosts*. A Garland senior, Marie was the Costume Designer for *Quake* and will be directing *The Waste Disposal Unit*.

**Erica Drain** (2nd Stage Manager), a junior communications major from Longview, has appeared in *1969, or Howie Takes a Trip* and *Lilly's Purple Plastic Purse* at SFA. Erica's crew credits include *Follies*, *Bacchae*, and The Playreading Festival.

**Oliver Zemp DuBose** (1st Stage Manager) is a junior from Irving. He has performed in such SFA productions as *Lucky*, *Pericles*, *The Seagull*, *The Vise*, and *The "I" Word: Interns*. He is also a member of Delta Sigma Phi.

**Laura Edwards** (1st Ingenue), an ATA student from Bristol, UK, has acted in several shows at Rose Bruford. She has taken a summer course at Sylvia Young Theatre School and was a guest presenter on the UK television show, *Blissed Out*.

**Anna Forbes** (2nd Leading Lady) is an ATA student from Exeter, England. She spent six years with The Young Generation of Musical Theatre and has received two gold medals from The London Academy of Music and Dramatic Arts.

**Eric Franklin** (1st Juvenile) is a freshman from Red Oak High School, where he was seen in *To Kill a Mockingbird*, *Arsenic and Old Lace*, and *Our Country's Good*. He also served on the crew for SFA's *The Vise*.

**Greg Anthony Garcia** (1st Leading Man), a sophomore theatre major from San Antonio, has appeared in such SFA productions as *The Man Who Came to Dinner*, *The Fifth Sun*, and *Guernica*. Greg was also the Slide Projectionist for the studio hour, *Life Support*.

## ABOUT THE CAST (CONTINUED)

**Alexandria Glazener** (Little Girl), a 3rd grader at Central Heights Elementary, is the daughter of Dennis and Charisse Glazener. Alex's Lamp-Lite Theatre credits include *Bye, Bye Birdie*, *Annie Get Your Gun*, *Anne of Green Gables*, and *The Wizard of Oz*.

**Jessica Harkness** (Leading Lady), a sophomore theatre major from Orange, is making her debut on SFA's Mainstage. At SFA, she has appeared in student productions of *Private Eyes* and *Marred Bliss*. Jessica is an English minor with an emphasis in writing.

**Lacy Hearnberger** (House Manager) has acted in the SFA productions of *Loyalties* and *What Are You Doing in There?* Lacy is a sophomore from Fresno, California. She can be seen again this semester in *The Waste Disposal Unit*.

**Josh Hemingway** (Director) is an American Theatre Arts student from Huddersfield, UK. At Rose Bruford College, his acting credits include *Reunion*, *The Crucible*, *Kennedy's Children*, *A View from the Bridge*, *All Powers Necessary and Convenient*, and *Downtown*.

**Izchel Hernandez** (Madam Pace) makes her first appearance on the SFA stage. She is a freshman from San Benito High School, where she was seen in *Chamber Music*, *George Orwell's 1984*, *Blood Money*, and *The Children's Hour*.

**Aslan Hollier** (1st Technician) is making his Mainstage debut. Aslan, a freshman theatre major from Orange, has appeared in the SFA productions of *Electric Roses* and *Devil's Karma*; he can be seen again this semester in *The Waste Disposal Unit*.

**Ashleigh "Grace" Lubeck** (Step-Daughter) is a sophomore theatre major from Stephen F. Austin High School in Sugarland. At SFA, Grace has previously been seen as the daughter of Antiochus in *Pericles* and as Apuch in the public full-length, *The Fifth Sun*.

**Kate Marsden** (2nd Technician) is an American Theatre Arts student from Manchester, England. Kate has appeared as Nina in *The Seagull* and as Miss Barclay in *What the Butler Saw*, as well as in several roles at Rose Bruford College.

**Liane Moffat** (2nd Ingenue) is an ATA student. At Rose Bruford College she has various acting credits, directed a ten-minute production, and served as Deputy Stage Manager for the Mainstage production of *Reunion*.

# THE CAST

## The Characters:

Father .....	JR Ramirez *
Mother .....	Marie Charlson *
Step-Daughter .....	Ashleigh "Grace" Lubeck
Son .....	Stephen Witkowicz *
Boy .....	Robert Bills
Girl .....	Alexandria Glazener
Madam Pace .....	Izchel Hernandez

## The Actors:

Leading Man .....	Greg Anthony Garcia
Leading Lady .....	Jessica Harkness
Character Man .....	Walter Young
1st Juvenile .....	Eric Franklin
2nd Juvenile .....	Justin Urias Bauer
2nd Female Lead .....	Anna Forbes
Character Woman .....	Jennifer Noble
1st Ingenue .....	Laura Edwards
2nd Ingenue .....	Liane Moffat

## The Production Company:

Director .....	Josh Hemingway
1st Stage Manager .....	Oliver Zemp DuBose
2nd Stage Manager .....	Erica Drain
Stagehand .....	Joshua Alan Spence
1st Technician .....	Aslan Hollier
2nd Technician .....	Kate Marsden
House Manager .....	Lacy Hearnberger

**The Setting:** A small professional theatre. Today.

This production presented by special arrangement  
with Samuel French, Inc.

\* Indicates membership in the Beta Phi cast of  
Alpha Psi Omega,  
the National Honorary Dramatics Fraternity

## ABOUT THE PLAYWRIGHT

As one of Italy's most celebrated 20th century authors, Luigi Pirandello is most recognized for his play *Six Characters in Search of an Author*. Pirandello tended to write plays with simple storylines, yet complex philosophical undertones. Common themes of his plays include madness, illusion vs. reality, infidelity, the symbolic wearing of masks, and the metamorphosis of life into art. *Six Characters in Search of An Author* addresses many of these topics. The uniqueness of this show exists not in the plot of the characters, the plot of the actors, or the themes of the show, but in the interweaving of the two simple plots into a multifaceted alternate reality. This reality is constantly changing for both the actors and the characters of the play--the art transforms into reality onstage in front of our very eyes. This extraordinary idea is echoed throughout the play as well as in many of his other works.

The first Italian production in Rome was an utter disaster: Pirandello had to leave the theatre early so as not to be jeered out by many close-minded audience members. It was not until Georges Pitoëff's Paris production in 1923 (almost two years later) that *Six Characters in Search of An Author* received international acclaim. Pirandello soon learned you should "never rehearse with the author present" after he threatened to keep the show from going up when he saw Pitoëff's outlandish plan of lowering the characters onstage with a scenery elevator surrounded in eerie, green lighting. The use of this theatrical device soon became one of the most recognized of 20th century production history. The Paris production was followed by a number of successful productions elsewhere, including a New York revival in 1955, when Paul Avila Mayer translated the text to be more colloquial and gave the theatre company's speech pattern a closer resemblance to that of contemporary theatre.

Pirandello is recognized throughout the world as Italy's most significant modern playwright. With the financial support of Mussolini he was able to start his Teatro D'Arte di Roma (Art Theatre in Rome). He became a member of the Accademia d'Italia in 1929 and won the Nobel Prize for Literature in 1934. He experienced only 13 years of his worldwide fame before dying in 1936 at the age of 69. He wrote 40 plays and hundreds of short stories, only a few of which have been accurately translated. In the words of the Father in *Six Characters in Search of An Author*, "A man must always die; even an author must always die; but a character lives forever." Yet Pirandello lives forever as a character in our minds--as the great modern Italian playwright who brought six characters off the page and onto the stage right before our very eyes.

--Ruth Ramsey

## ABOUT THE CAST (CONTINUED)

**Jennifer Noble** (Character Woman), a junior theatre major from Mesquite, has acted in a number of SFA productions. Jenn appeared as the Nurse in *The Seagull*, Ralph in *Lilly's Purple Plastic Purse*, and Nell in *Haiku*.

**JR Ramirez** (Father), a senior from Garland, has just returned from an acting internship with the Milwaukee Repertory Theatre. At SFA, he has been seen in *The Seagull*, *Follies*, *Bus Stop*, *The Sex Education of My Mother*, *Hamlet*, and *Terra Nova*. This is JR's final appearance on SFA's Mainstage, as he will graduate in December.

**Joshua Alan Spence** (Stagehand), a sophomore from San Antonio, has been in such SFA productions as *The Informer*, *Devil's Karma*, and *Graceland*. He also served as the Assistant Stage Manager for *The Fifth Sun* and Stage Manager for *The Vise*.

**Stephen Witkowicz** (Son), a junior from Dallas, has been in many SFA productions, including *The Seagull* and *Lilly's Purple Plastic Purse*. Stephen can be seen as Hubert in SFA's student film production of *American Goldfish*, premiering in the Spring of 2005.

**Walter Young** (Character Man), a freshman, has acted with Troupe d' Jour in *A Midsummer Night's Dream*, *Much Ado About Nothing*, and *Hamlet*. He also wrote, costumed, directed, and choreographed *Thunder in Paradise* at Carthage High School.

## ABOUT THE ARTISTIC STAFF

**Angela Bacarisse** (Costume Designer) has designed over 200 productions in academic and professional theatres across the country. Her most recent costume designs at SFA include *Hair*, *Sideways Stories from Wayside School*, *The Two Maples*, the 2004 New Plays Festival, *The Man Who Came to Dinner*, and *Pericles*.

**Barbara Blackwell** (Costume Shop Supervisor) became Costume Shop Supervisor in 2000. She was Costume Illustrator for *The Land of the Dragon*, and has worked on many other shows: most recently, *Hair*, *Sideways Stories from Wayside School*, *The Two Maples*, the 2004 New Plays Festival, and *The Man Who Came to Dinner*.

**Rick Jones** (Director) is directing his second Pirandello play: the first was *Right You Are! (If You Think You Are)* at Cornell College in 1991. His directing credits at SFA include *The Two Maples*, *The Increased Difficulty of Concentration*, *The Land of the Dragon*, and *Ghosts*.



## ABOUT THE ARTISTIC STAFF (CONT.)

**Tomy Matthys** (Scenic Designer) has taught for over 30 years at SFA, where he has designed over 200 productions. His most recent scenic designs include *Hair*, *Sideways Stories from Wayside School*, *The Two Maples*, *The Increased Difficulty of Concentration*, *Bacchae*, *Follies*, *Bus Stop*, and *And Miss Reardon Drinks a Little*.

**Dusti Muræ Meeks** (Hair and Makeup Designer), a senior from Canadian, has designed hair and makeup for *The Increased Difficulty of Concentration*, costumes for *Private Eyes*, and wigs for *Falstaff*. Dusti has also appeared in *Bacchae*.

**Ruth Ramsey** (Dramaturg) is a senior from Irving. She stage managed *Grief* and designed hair and makeup for *Self Torture and Strenuous Exercise*. At SFA, Ruth's acting credits include *The Increased Difficulty of Concentration*, *Bacchae*, and *The Informer*.

**Steven H. Shirey** (Lighting Designer & Technical Director) earned a BFA from SFA in 1994 and an MFA in Lighting Design from USC in 1998. He has been Technical Director at SFA since 2001. At SFA, he has designed lighting for *Hair* and for the operas *Street Scene*, *The Consul*, and *The Magic Flute*.

**Whitney L. Smith-Nelson** (Assistant Director) assistant directed *Lilly's Purple Plastic Purse* and directed *The Vise*. She stage managed *The Man Who Came to Dinner*, designed makeup for *The Land of the Dragon*, and was Assistant Choreographer for *Bacchae*.

**Spring Streetman** (Assistant Costume Designer), a senior from Victoria, has directed *Quake* and *What Are You Doing in There?*, and assistant directed The 2004 New Plays Festival. This semester she will be costume designing *The Waste Disposal Unit*.

**Amber Talley** (Stage Manager), a sophomore from Katy, was Stage Manager for *The Fifth Sun* and *Private Eyes*. This semester, Amber was Sound Designer for *The Vise* and Scenic Artist for *Quake*. She also assistant stage managed *The Man Who Came to Dinner*.

**Mercedes Vaughn** (Assistant Stage Manager) is a sophomore theatre major from Buffalo. This is Mercedes' first experience working on an SFA Mainstage Production. This semester, Mercedes served as the Costume Designer for the Public One-Act *The Vise*.

## THE TECHNICAL STAFF

Technical Director .....	Steven H. Shirey
Costume Shop Supervisor .....	Barbara Blackwell
Assistant Stage Manager .....	Mercedes Vaughn
Properties Mistress .....	Shawna Lynch
Assistant Costume Designer .....	Spring Streetman *
Sound Engineer .....	Zachary Whitaker
Lightboard Operator .....	Vanity Thomas
Projectionist .....	Sarah Long
Soundboard Operator .....	Theresa Pennell
Paint Crew .....	Cara Boden, Carleen Kirksey, Matt Lawson, Erin Orr *, Courtney Outlaw, Genevieve Plangman, Ryan Plumbley, Stephen Rainwater, Cassidy Risien
Scenery Construction .....	Theatre 150 and 350
Properties Crew .....	Russ Arnett, Devin Collins, Xanta France, Kristy Lewis, Josh Real, Lori Sahualla, Clare Scallon
Light Hang Crew .....	Christina Barboza, Kristen Brittain, Lacey Carnley, Chase Crowson, Justin Elbert, Brandie Holliday, Rusty Lindsey, Jeff Lochmann, David Nedde, Matthew Oliver, Stephanie Rhoades, Sarah Sweny, Nikki Terner
Wardrobe Master .....	Kristi Agee
Costume Construction .....	Theatre 150 and 350
Wardrobe Crew .....	Brooke Lightfoot, Jean McCarthy
Hair & Makeup Crew .....	Brittany Holdgraf, Lindsey McElroy, Matthew Oliver
House Manager .....	Lacy Hearnberger
Ushers .....	Theatre majors and minors
Programs .....	Rick Jones, Melissa Recalde
Box Office Supervisor .....	Diane Flynn
Publicity .....	Sylvia Bierschenk, Office of Arts Information

## ACKNOWLEDGMENTS

Justin Cole, Dr. Deborah Dalton, Shari Watterston Ellsworth,  
Juanita Finkenberg, Charisse Glazener, Izchel Hernandez,  
Java Jack's, Leslie Sinclair

The graphics logo for this production is "Boccioni"  
by George Underwood, used with permission of the artist.  
Visit his website at [www.georgeunderwood.com](http://www.georgeunderwood.com)

**SFA Department of  
Theatre  
Faculty and Staff**

Dr. Richard Berry  
*Dean, College of Fine Arts*

Dr. Clarence W. Bahs  
*Professor and  
Department Chair*

Ms. Angela Bacarisse  
*Assistant Professor*

Dr. Richard Jones  
*Assistant Professor*

Mr. Tomy Matthys  
*Associate Professor*

Dr. Alan Nielsen  
*Professor*

Mr. Allen Oster  
*Professor*

Mr. Luis Ramirez  
*Associate Professor*

Mr. Jack Heifner  
*Playwright-in-Residence*

Ms. Shari Watterston Ellsworth  
*Lecturer*

Ms. Juanita Finkenberg  
*Adjunct Faculty*

Ms. Barbara Blackwell  
*Costume Shop Supervisor*

Mr. Steven Shirey  
*Scene Shop Supervisor*

Ms. Nelda Hartley  
*Administrative Assistant*

**Friends of the Arts  
Theatre Division  
Theatre Board**

Susan Conley (Pres.)

Betty Ann Taylor (VP)

Melissa McMillian-Cunningham  
(Secy./Treas.)

Debra Daughtery (Council Rep)

Stephanie George,

Nancy Lemberger, Bo Miller,

David & Anne Norton,

Frances Spruiell, Bill Taylor

**Stokes Scholars  
2004-05**

Veronica Blanco, Kelli Denby,  
Lyndsey Doolen, Timothy Estelle,  
Chad Kinsman, Shawna Lynch,  
Natalie Melcher, Missy Paschke,  
Ruth Ramsey, Richard Shafer,  
Whitney Smith-Nelson,  
Heaven Stephens,  
Tori Thompson

**Alumni Scholars**

Thomas Brazzle, Marie Charlson,  
Timothy Estelle, Erin Orr,  
Jennifer Stoneking

**Departmental and  
Other Scholarships**

Christina Barboza, Cara Boden,  
Sara Boland, Sean Carlson,  
Kera Dacy, Chris Flores,  
Jessee Foudray, Jacob Glover,  
Micah Goodding, Clint Hanna,  
Brandie Holliday, David Nedde,  
Nadaha McCullough,  
Bettina Palomino, Cassidy Risien,  
Jesse Sellers, Nicole Terna

**2004-05 Mainstage Season  
Faculty-Directed Productions**

All performances at 7:30 p.m.

***Hair***

October 7-9

Book & Lyrics by Gerome Ragni & James Rado;  
Music by Galt McDermot

***Six Characters in Search of an Author***

by Luigi Pirandello

November 16-20

***Harvey***

by Mary Chase

February 22-26

***The Member of the Wedding***

by Carson McCullers

April 26-30

**Fall 2004 Downstage Season  
Student-Directed Productions**

7:30 p.m. Friday; 2:00 and 7:30 p.m. Saturday

***The Vise***

by Luigi Pirandello

September 24-25

***Quake***

by Melanie Marnich

October 22-23

***Self Torture and Strenuous Exercise***

by Harry Kondoleon

November 5-6

***The Waste Disposal Unit***

by Brigid Brophy

December 3-4