

Stephen F. Austin State University

SFA ScholarWorks

Interior Design Senior Projects

School of Human Sciences

3-2018

Charlie Ware Senior Interior Design Exhibit 2018

Charlie Ware

Stephen F Austin State University, chrllware@yahoo.com

Follow this and additional works at: https://scholarworks.sfasu.edu/interior_design_projects



Part of the [Interior Architecture Commons](#)

[Tell us](#) how this article helped you.

Repository Citation

Ware, Charlie, "Charlie Ware Senior Interior Design Exhibit 2018" (2018). *Interior Design Senior Projects*. 43.

https://scholarworks.sfasu.edu/interior_design_projects/43

This Project is brought to you for free and open access by the School of Human Sciences at SFA ScholarWorks. It has been accepted for inclusion in Interior Design Senior Projects by an authorized administrator of SFA ScholarWorks. For more information, please contact cdsscholarworks@sfasu.edu.

Charlie Ware

Design Philosophy: I believe it is important to design a bright and positive space because it is a key to a happy and successful life.

I am Charlie Ware. I am from Hamburg, Arkansas. Some goals I have for myself would be to move to Dallas and get a job and start a career and to be successful.





Charlie Ware

Stephen F. Austin State University
Contact: chrlware@yahoo.com

Table of Contents

Commercial Design

Residential Design

Construction Design



Commercial Design

LOVE Inc.



Problem: LOVE Inc. requested the SFASU Interior Design program to participate in a Charette that lasted two days in hopes to remodel an old storage building.

Goal: The goal of this project was to work together as a group in order to come up with a full plan for their newly remodeled safe space for the homeless community of Nacogdoches. LOVE Inc. requested a site plan, floor plan, dimension floor plan, and a job work sheet. Our goal was to give them a facility that could host 5-10 people including a full bathroom, living space, kitchen, and washer and dryer facility.

Solution: As a group we designed a solution for the LOVE Inc. safe space. This project was very rewarding to work with. We designed a floor plan, dimension floor plan, site plan, and job worksheet as well as a presentation to present to the wonderful people at LOVE Inc.

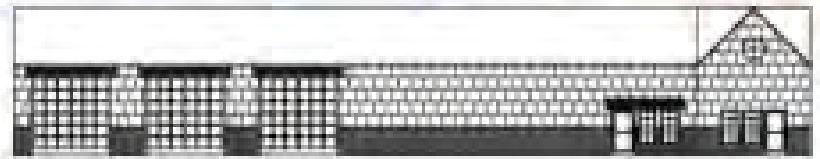


Douglass Fire Dept.

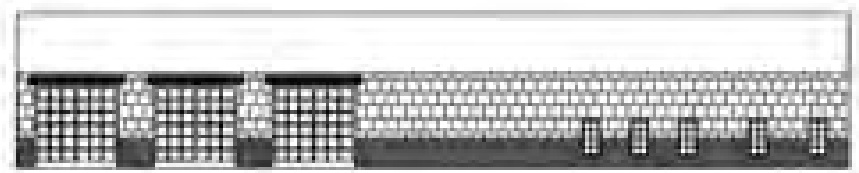
Floor Plan



Site Plan



A Exterior Elevation North View



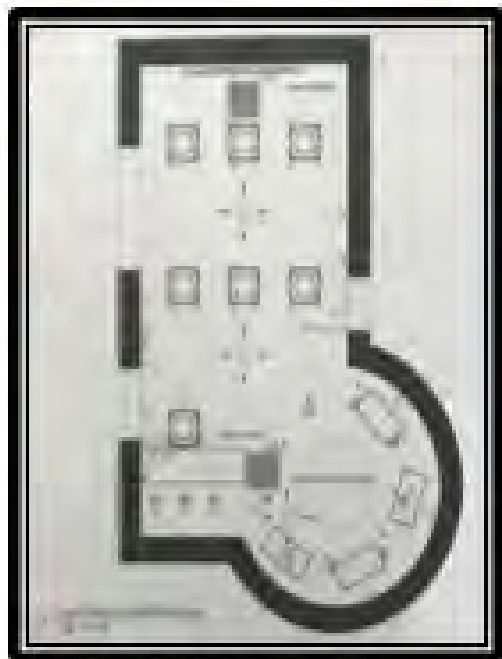
B Exterior Elevation North View

Problem: Douglass Fire Department requested the SFASU Interior Design program to participate in a Charette that lasted three days in hopes to find a new fire station of their dreams.

Goal: The goal of this project was to work together as a group in order to come up with a full plan for their new fire station. They requested a site plan, floor plan, dimension floor plan, and a job work sheet. Our goal was to create a functioning fire station that housed up to three firefighters at a time, full sleeping area, kitchen, private bathrooms with showers, a washer and dryer facility, extra storage and then two public restrooms. Our goal was to also give the Douglass Fire Department a community meeting room.

Solution: As a group we designed a solution for the Douglass Fire Department. Some solutions include making the floor plans, dimension floor plans, site plan, and job work sheet. We created a power point with our designs and presented it to the Douglass fire department.

Lighting Specification

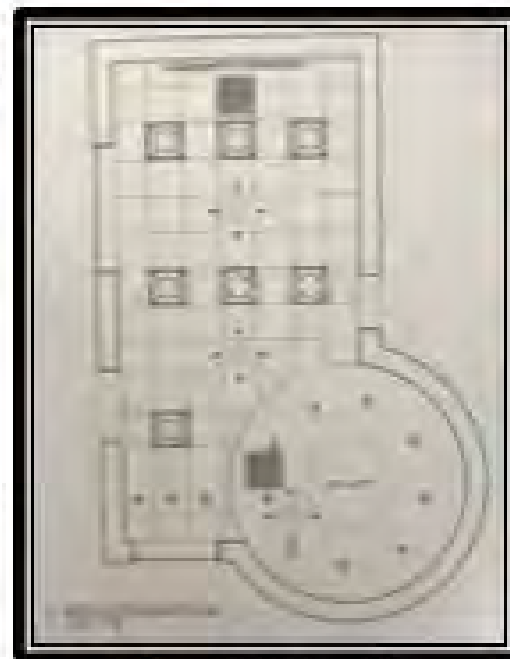


Electrical Lighting Plan

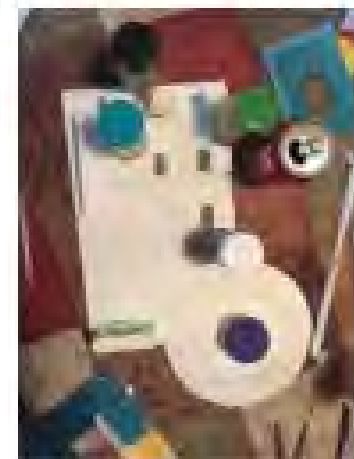
Ice Cream Shop



Problem: To design a small commercial space that incorporates daylighting and the three layers of artificial lighting.

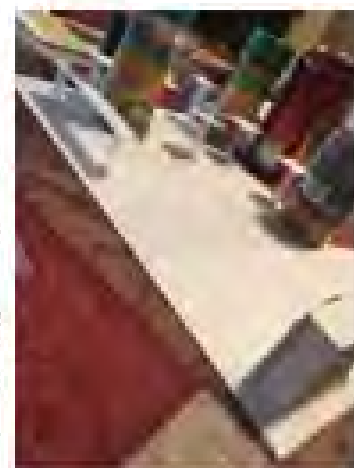


Reflected Ceiling Plan

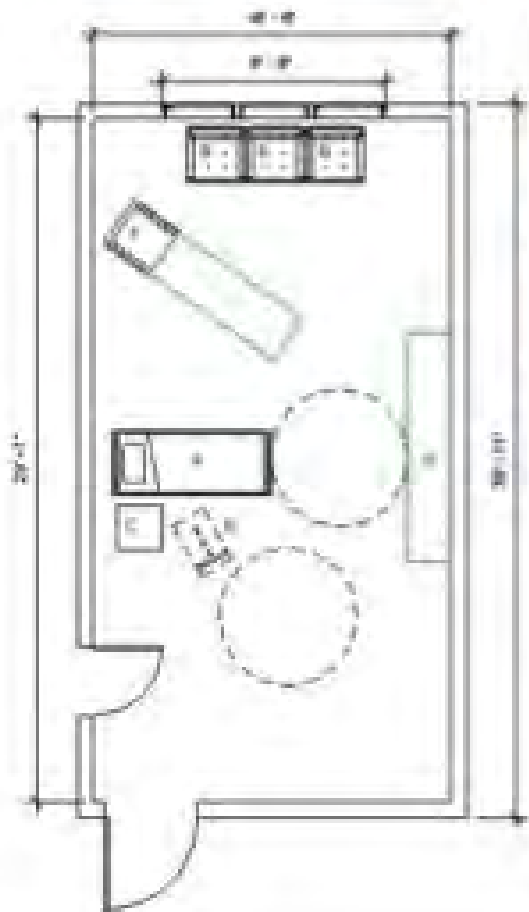


Goal: To plan the placement of windows and the location of general, task, and accent luminaires for a conceptual ice cream shop. The lighting solution should promote function, aesthetics, and safety.

Solution: The lighting model and drawings communicate the placement of multiple different styles of lighting to harvest daylighting. Recessed 8" down lights provide general lighting, lowered lighting soffit is placed above the cashier's table as task lighting, and recessed adjustable/eyeball fixtures accent the wall art to make them pop



Herman Hospital Design



Problem: Herman Hospital requested a full room mock up of one of their patients rooms in hopes of adopting the idea and eventually carrying out the design throughout the entire hospital.

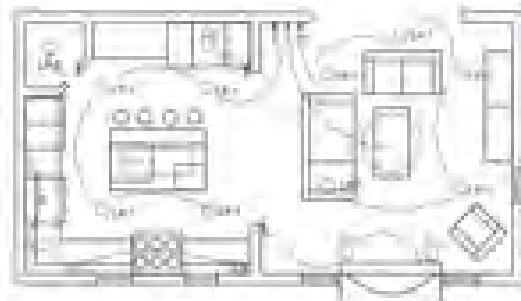
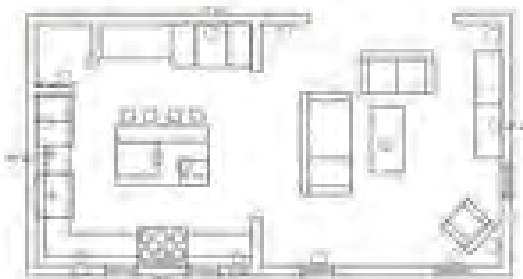
Goal: The goal was to come up with a fun, bright, vibrant design that any patient would enjoy. Herman Hospital also wanted us to come up with a full floor plan, furniture floor plan, lighting floor plan, and job worksheet for the display room to have for future use.

Solution: I successfully completed the suites floor plan along with the bathroom floor plan with all of the specification details. I made this space ADA accessible for handicap use and also designed a sample board with all of the finishes and materials on it so that the viewers of the mock up room can have samples in front of them to view.



Residential Design

The Sanders Kitchen



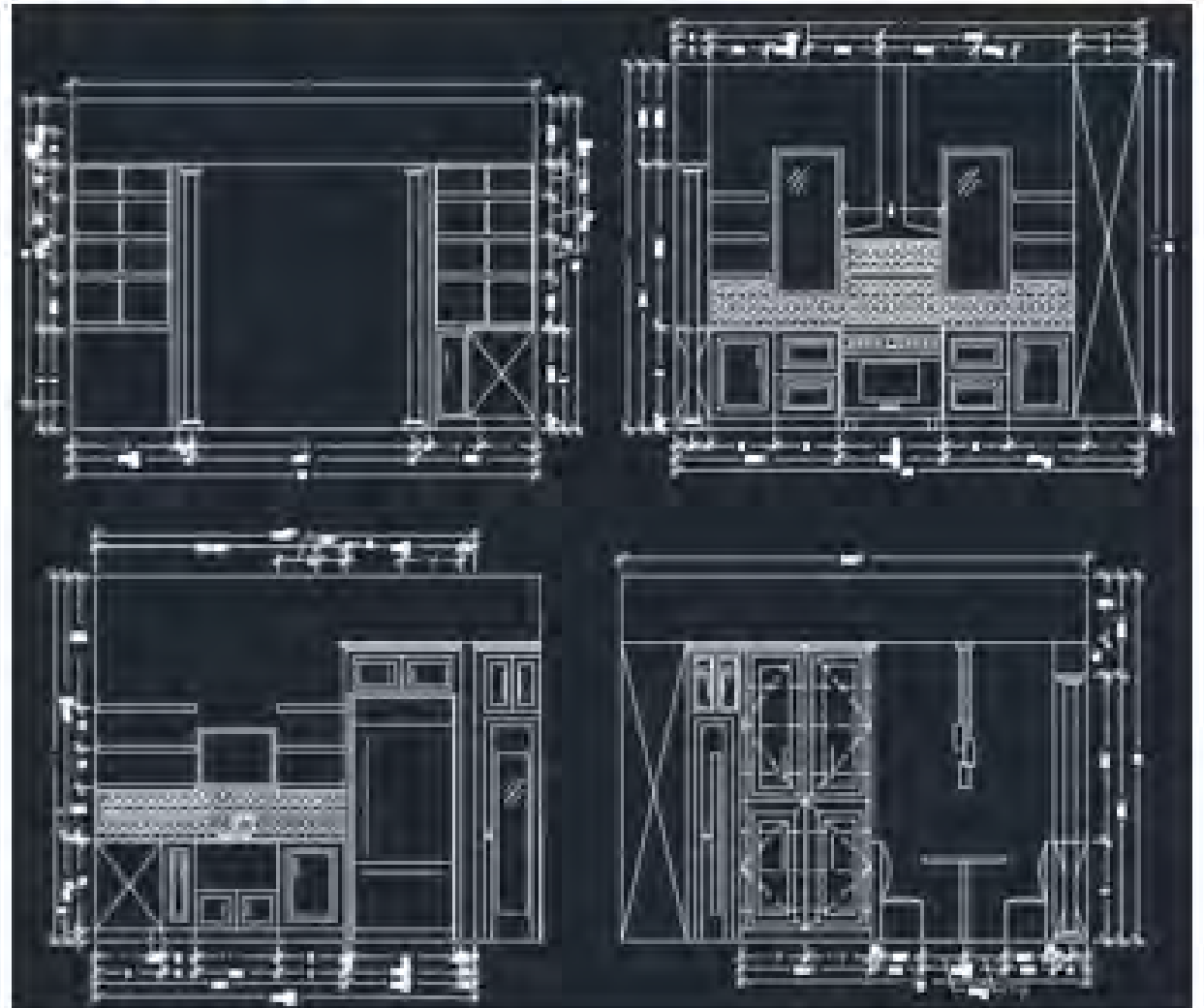
Electrical Outlet Legend	
○	Light
□	Refrigerator
□	Stove
□	Sink
□	Other

Lighting Electrical Legend	
○	Light Fixture
□	Refrigerator
□	Stove
□	Sink
□	Other

Problem: The Sanders Family requested an expansion and remodel of the home's kitchen. Their problem was they did not have enough storage and wanted an newly remodeled kitchen with an open concept into the living room and open cabinets.

Goal: The goal was to work hand in hand with the Sanders in hopes to designing their dream kitchen in their dream home.

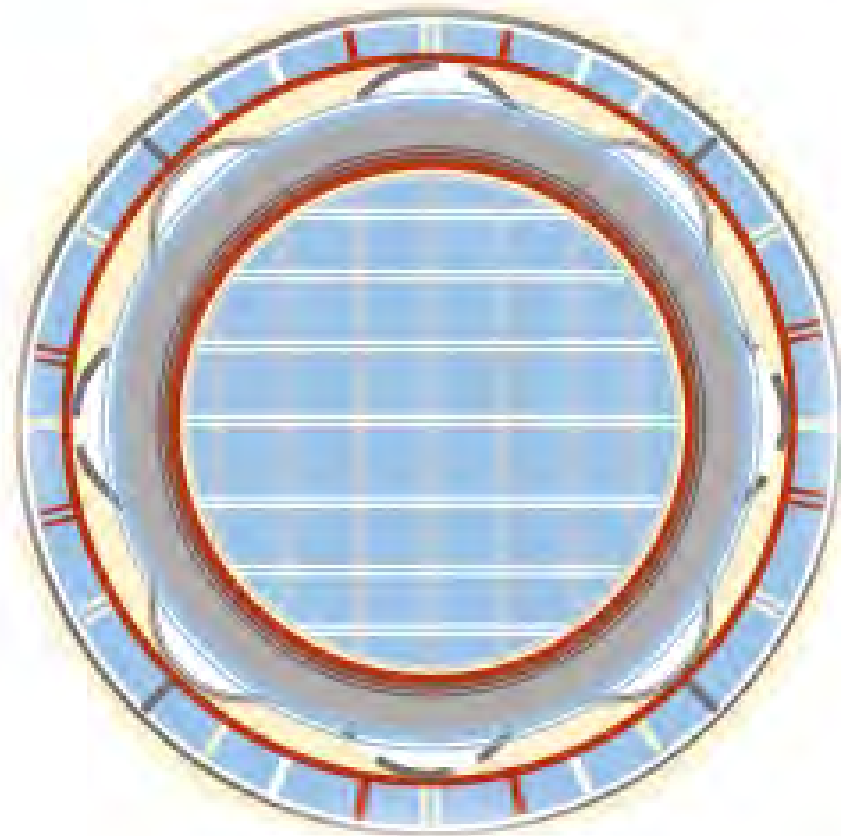
Solution: The renovation plans propose the use of large open shelving, a central work island, and a breakfast nook. Drawings and photographs document the design process from inspiration through appliance selection.



The Sanders Rug Design



Location: Parlor Room
Size: 6' Diameter
Fiber: Nylon
Style: Saxony
Multi-Level Loops
Custom Design



Problem: The Sanders requested a carpet design to be presented in their future space.

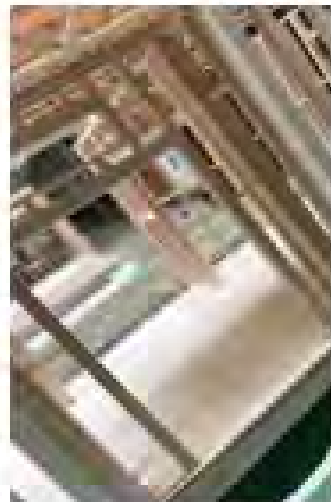
Goal: The goal was to design a rug that fit the style of the Sanders residence.

Solution: Researched styles of carpets and how they are made. Chose to place the carpet in the Sanders Parlor room that matched the rich Samuel McClintire inspired Federal style.



Construction Design

The Sanders Building Model

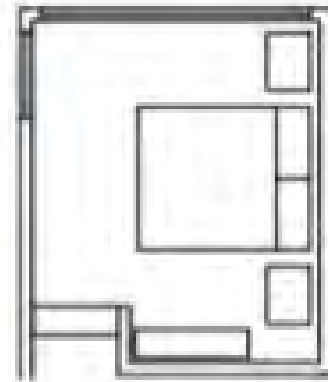


Problem: The Sanders wanted a model to show what their future home was going to look like.

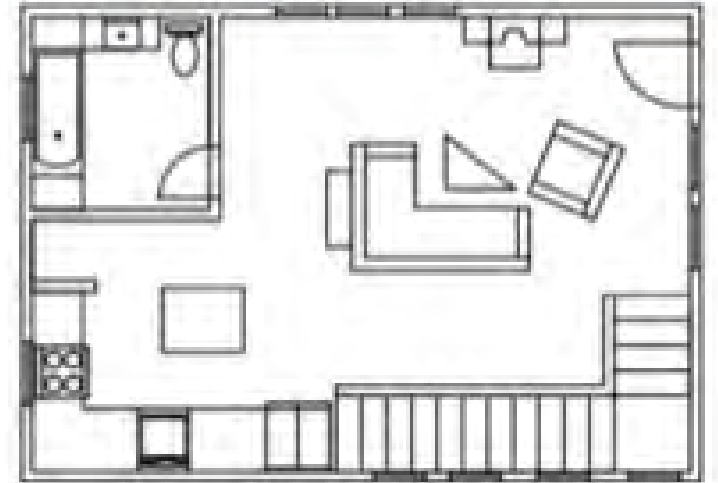
Goal: I created a model of the Sanders home in $\frac{1}{8}$ " scale so the Sanders could have an idea of what it was going to look like. The goal was to build the front half of the home out of balsa wood, add insulation, walls, roofing, and the underneath pier and beam.

Solution: Through the building of the model I learned that it is very important to have the accurate measurements on each side because if you are off to the slightest centimeter the whole design process will be off.

Small Cabin Design



Floor Plan- Loft



Floor Plan-First Floor



Problem: To design a small cabin space that is useful with a loft that depicted my assigned architect, Michael Graves.

Goal: The small cabin has to be a useable space with lots of storage. The small cabin could not exceed 680 square feet and must have a loft space fit for a bedroom.

Solution: Showed research, inspiration pictures, floor plan, space saving, and great craftsmanship on the cardboard model. The floor plan is displayed underneath the model to appeal to the viewer's eye.



Michael Graves-Denver Library

Cardboard Model



Problem: To design and construct a full-scale custom furniture piece from recycled cardboard.

Goal: To incorporate appropriate joinery and fastener methods in the construction of a case goods piece.

Solution: Process photographs and floor plan, elevation, and detail drawings document the design and construction of a bedside table. The full-scale model reveals the strength of corrugated cardboard and required the careful cutting of interlocking and non-interlocking joints.



Rabbet Joint



Dado Joint



Thanks for Watching